

Shape your world



Ritsumeikan
Asia Pacific University

RITSUMEIKAN
**ASIA PACIFIC
UNIVERSITY** 2024

APPLICATION HANDBOOK

APRIL / SEPTEMBER 2024 ENROLLMENT

FOR ALL GRADUATE SCHOOL
APPLICANTS

2024 Personal Information Policy

Personal information collected from individuals during the admissions process will be handled in accordance with the following:

1. Purpose of Use of Personal Information

- 1) To carry out the admissions process, such as screening, etc.
- 2) To notify results
- 3) To send enrollment-related documents
- 4) To complete the procedures to attain the Certificate of Eligibility to issue a visa
- 5) To send the orientation guide for international students
- 6) To send information on pre-enrollment education
- 7) To send information on post-enrollment living matters (accommodation services, personal injury insurance, university co-op, etc.)
- 8) To send various questionnaires after admission

2. Management of Personal Information

Ritsumeikan Asia Pacific University will manage the personal information of applicants in compliance with relevant laws and regulations. Information will be managed securely to prevent loss, destruction or divulgence.

3. Outsourcing Services Associated with the Provision of Personal Data

Ritsumeikan Asia Pacific University may outsource certain work that includes the handling of personal data to a third-party entity having executed an agreement on the proper handling of personal information.

4. Statistical Use of Personal Information

Ritsumeikan Asia Pacific University may use data extracted from applicants' personal information to conduct various statistical analysis to be used for surveys and research relating to the admissions process. This data may also be provided to students interested in applying to Ritsumeikan Asia Pacific University. However, the university shall ensure that any information made public cannot be used to identify specific individuals.

Refer to the admissions website for detailed information about APU's GDPR policy (<https://admissions.apu.ac.jp/regulations/>).

Organizations Providing Standardized Examinations

TOEFL® Test

Test of English as a Foreign Language by ETS: Educational Testing Service
www.ets.org/toefl

IELTS

International English Language Testing System by the British Council
www.ielts.org

Cambridge English Language Assessment

Cambridge English Language Assessment by Cambridge Assessment English
www.cambridgeenglish.org

TOEIC® Test

Test of English for International Communication by ETS: Educational Testing Service
www.ets.org/toEIC

PTE Academic Pearson Test of English Academic by PEARSON

www.pearsonpte.com

TOEIC, TOEFL, TOEFL iBT and TOEFL ITP are registered trademarks of Educational Testing Service (ETS).

This publication is not endorsed or approved by ETS.

L&R is an abbreviation for LISTENING AND READING.

Application Checklist

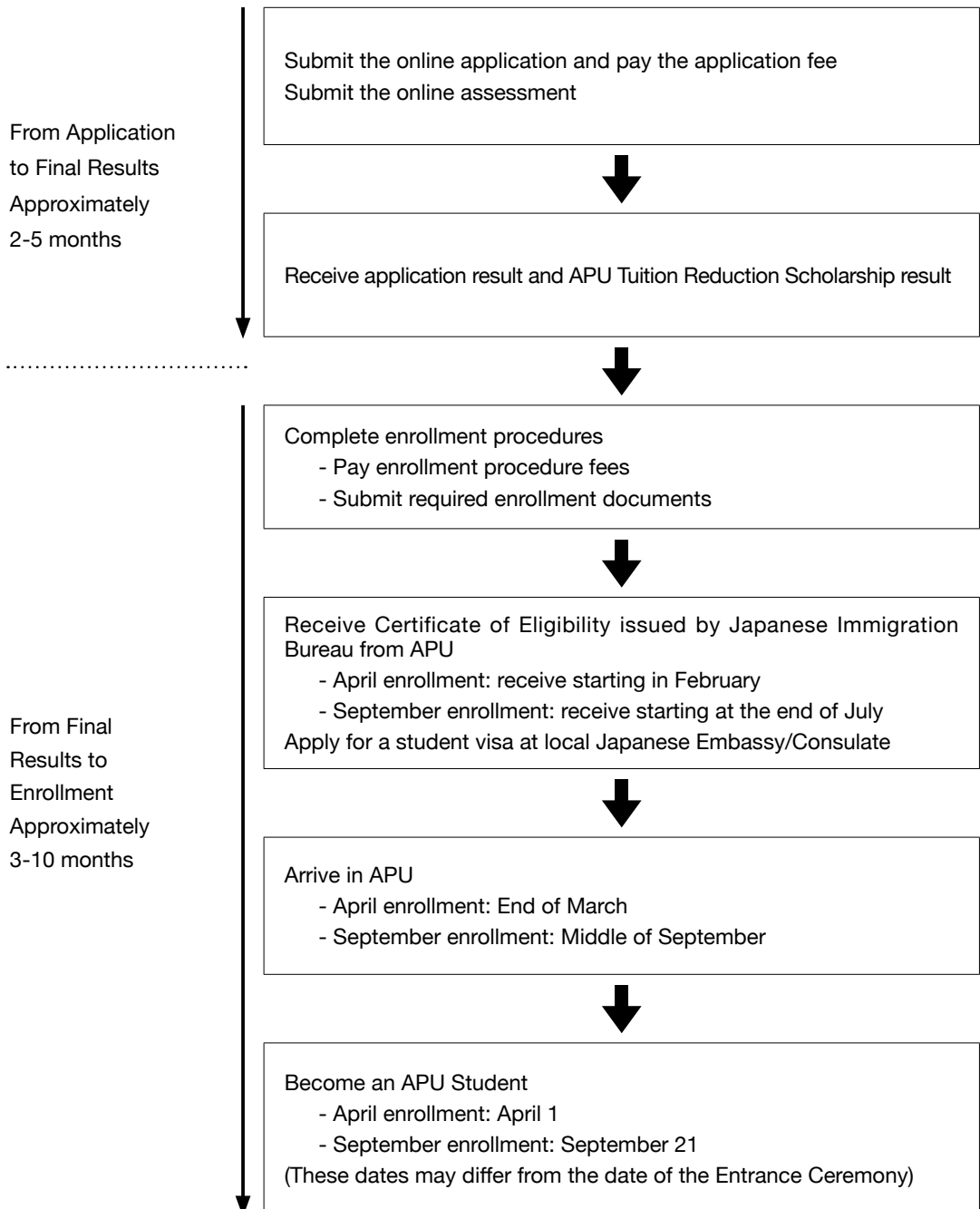
Please apply online at admissions.apu.ac.jp/graduate/apply_online.

- A digital copy of all required application documents should be submitted through the online application.
- There is no need to print out the documents submitted online and send them to APU at the time of application. All documents submitted online will be treated as the authentic copy.
- For documents not written in English, please also upload an official English translation.

Required Application Information and Documents	<input checked="" type="checkbox"/>	Graduate School of Asia Pacific Studies			Graduate School of Management
		Master's	IMAT	Doctoral	
1. Online Application	<input type="checkbox"/>	✓			
1) Applicant Information	<input type="checkbox"/>	✓			
2) Personal Statement	<input type="checkbox"/>	✓			
3) Research Proposal/Study Plan	<input type="checkbox"/>	✓			
4) University Graduation Certificate(s)/ Certificate of Scheduled Graduation	<input type="checkbox"/>	✓			
5) Academic Transcripts	<input type="checkbox"/>	✓			
6) Document(s) proving English proficiency Required for all applicants who do not meet the exemption requirements	<input type="checkbox"/>	✓			
7) Two Letters of Recommendation	<input type="checkbox"/>	✓			
8) Passport scan (if available)	<input type="checkbox"/>	✓			
9) Photographs	<input type="checkbox"/>	✓			
10) Curriculum Vitae	<input type="checkbox"/>	×	✓	×	✓
11) Sample Work or List of Research Achievements	<input type="checkbox"/>	×	✓		×
12) Supervisor Confirmation Letter	<input type="checkbox"/>	×		✓	×
13) Certificate of Employment	<input type="checkbox"/>	×			✓
14) GMAT® Results, GRE® Results	<input type="checkbox"/>	Strongly recommended but not mandatory			
2. Application Fee Payment	<input type="checkbox"/>	✓			
Proof of Application Fee Payment	<input type="checkbox"/>	✓			
3. Online Assessment	<input type="checkbox"/>	✓			
4. Additional Documents (only if applicable)					
1) Residence Card (Only for applicants who already have a valid Japanese status of residence)	<input type="checkbox"/>	✓			
2) Proof of scholarships received from organizations other than APU	<input type="checkbox"/>	✓			
3) Additional required documents for each external scholarship	<input type="checkbox"/>	✓			
4) Designation Page in Your Passport (Only for applicants who have a valid Specified Visa – Designated Activities)	<input type="checkbox"/>	✓			

After being accepted to APU, enrolling students must submit certified copies of uploaded application documents to APU by post. Make sure to hold on to any documents you submit during the application process. Your acceptance to APU will be revoked if your documents submitted after acceptance differ from those uploaded with your online application, or if you are not able to submit the necessary documents.

Process from Application to Enrollment to APU



Please note:

Depending on the future situation of the novel coronavirus (COVID-19), the process from application to enrollment to APU noted in this application handbook may be changed.

CONTENTS

2024 Personal Information Policy

Application Checklist

Process from Application to Enrollment to APU

Admissions Guidelines

1. Educational Objectives	2
2. Admission Policy	3
3. Application Category	3

Master's Programs

1. Number of Students Accepted	4
2. Application Eligibility	4
3. Application Schedule	5

Doctoral (Ph.D.) Program

1. Number of Students Accepted	6
2. Application Eligibility	6
3. Ph.D. Application Process	7
4. Application Schedule	7

Scholarships

1. APU Tuition Reduction Scholarship	8
2. External Scholarships	9
3. Additional External Scholarships	15
4. External Scholarships Available After Enrolling at APU	16

Application Process

1. Online Application	18
2. Notes on creating Research Proposal and Study Plan etc.	23
3. Application Fee	24
4. Online Assessment	25
5. Application Submission	25
6. Evaluation Method	25
7. Additional Requests from APU	26
8. Admissions Support for Prospective Applicants with Medical Conditions or Disabilities	26
9. Information on Local Medical Services	27

From Acceptance to Enrollment

1. Enrollment Process Overview	28
2. Submitting Required Application Documents	29
3. Deadlines for Enrollment Procedures	30
4. Document Submission	30
5. Enrollment Procedure Fees	31
6. Final Pre-Enrollment Procedures	32

Ritsumeikan Asia Pacific University Guidelines on Support Services for Students with Disabilities

Policy Statement on Sexual and Gender Diversity



To apply online, please go to:
[admissions.apu.ac.jp/
graduate/apply_online](https://admissions.apu.ac.jp/graduate/apply_online)

ADMISSIONS GUIDELINES

Based on the educational philosophy of promoting Freedom, Peace and Humanity, International Mutual Understanding and the Future Shape of the Asia Pacific Region, Ritsumeikan Asia Pacific University (APU) gathers diverse students from many countries and regions and hopes to fulfill the mission of fostering future global leaders through the exchange of languages and cultures. After completion of their studies, APU graduates should be equipped with intercultural communication skills and the ability to adapt to a changing international horizon.

To fulfill this mission, APU aims to recruit domestic and international students with the potential to be active leaders of the 21st century international society in the Asia Pacific region, and the following graduate schools were established with this purpose.

1 EDUCATIONAL OBJECTIVES

The educational objectives of Ritsumeikan Asia Pacific University (APU) were established on the premises of 1 to 3 below.

1. To cultivate Japanese citizens with global perspectives and worldviews who can cooperate with peoples of various countries and regions in the spirit of mutual international understanding.
2. To cultivate international students who, by learning at a Japanese institute of higher education, develop a proper understanding of Japan and become active in the global arena.
3. To cultivate talented individuals who can build amicable and trustworthy relationships between Japan and the countries of the world and contribute to developing the future economies and societies in their respective countries and regions.

Graduate School of Asia Pacific Studies

Master of Science in Asia Pacific Studies

The Master's Program in Asia Pacific Studies aims to cultivate human resources who will possess a keen interest in research pertaining to and specialized knowledge and skills necessary for development of the Asia Pacific region in such areas as international relations and social and cultural studies, will achieve practical resolutions for issues in the region, and will contribute to sustainable development and coexistence in the region.

Master of Science in International Cooperation Policy

The Master's Program in International Cooperation Policy aims to cultivate human resources who will possess a keen interest in research pertaining to and specialized knowledge and skills necessary for development of the Asia Pacific region in such areas as public administration, environment, development, health and tourism, will achieve practical resolutions for issues in the region, and will contribute to sustainable development and coexistence in the region.

Doctor of Philosophy in Asia Pacific Studies

The Doctoral Program in Asia Pacific Studies aims to foster the advanced capacity for pioneering a new academic discipline (area) necessary for development of the Asia Pacific region and cultivate advanced researchers and highly qualified professionals with doctorate degrees who will contribute to sustainable development and coexistence in the region.

Graduate School of Management

Master of Business Administration

The Mission of the Graduate School of Management (GSM) is to cultivate creative, well-rounded professionals who will manage and lead globalizing enterprises and organizations with their advanced management skills and innovative, global, and ethical mindset.

APU hopes to realize these educational objectives by accepting outstanding students from all over the world.

2 ADMISSION POLICY

Ritsumeikan Asia Pacific University (APU) welcomes students who will uphold the university's basic ideals of Freedom, Peace, and Humanity, International Mutual Understanding, and the Future Shape of the Asia Pacific Region. These students should also be ready to acknowledge and understand differences in cultures and values, engage actively in an international campus community, and contribute to mutual learning.

New graduate school students must possess the following attributes and abilities in order to engage in this kind of learning:

1. Specialized knowledge and global perspective required to pursue advanced studies in one's graduate school and division
2. Analytical skills, perceptiveness, and aptitude to solve real-world problems
3. Requisite English language proficiency for research and study
4. Desire to contribute to and make full use of a multicultural collaborative learning environment

Graduate School of Asia Pacific Studies

Master's Program in Asia Pacific Studies

1. High-level interest in research pertaining to specialist fields including international relations, social studies, and cultural studies required for the development of the Asia Pacific region and the world at large
2. Strong intention to contribute to sustainable development and coexistence across the world

Master's Program in International Cooperation Policy

1. High-level interest in research pertaining to specialist fields including administration, environmental studies, development, health science and tourism required for the development of the Asia Pacific region and the world at large
2. Strong intention to contribute to sustainable development and coexistence across the world

Doctoral Program in Asia Pacific Studies

1. High-level interest in pioneering new academic disciplines required for the development of the Asia Pacific region and the world at large
2. Aptitude and skills for mastering new academic theories and applications as an independent researcher
3. Strong intention to contribute to sustainable development and coexistence across the world

Graduate School of Management

1. High-level interest in solving the management issues faced by companies and other organizations within global society
2. Ability to contribute innovative ideas to the sustainable development of the Asia Pacific region and the world as a whole, as a well-rounded manager and inclusive leader with a deep sense of social responsibility
3. Analytical skills, perceptiveness, and problem-solving ability acquired through at least three years of workplace experience

In order to admit graduate students compatible with APU's learning environment, research plans, assessment tests, interviews, academic transcripts, and other materials will be used in a multi-faceted evaluation of the aforementioned knowledge, attributes, skills, and intentions.

3 APPLICATION CATEGORY

Before applying, please confirm which category you fall under as the requirements and deadlines differ. The categories are as follows:

Overseas Applicants

All applicants residing outside Japan, excluding Japanese nationals and will continue to live outside of Japan during the entirety of the application process.

Domestic Applicants

All foreign nationals residing in Japan with a visa status **other than short-term** (for example, a Work Visa or a Dependent Visa) and all Japanese nationals whether living in Japan or abroad. Applicants who do not possess Japanese nationality must have a visa which is valid until the time of enrollment at APU. If your current visa will expire within two months of the time of enrollment at APU, please confirm with the Japanese Immigration Bureau whether or not it will be possible for you to extend your current visa or change to a student visa **before applying to APU**.

Internal Applicants

Applicants currently enrolled at Ritsumeikan Asia Pacific University (APU) or Ritsumeikan University.

MASTER'S PROGRAMS

1 NUMBER OF STUDENTS ACCEPTED

Graduate School of Asia Pacific Studies (GSA) Master of Science	Intake Period	Intake per Year	Standard Period of Completion	Total Tuition
<u>Asia Pacific Studies</u> (APS) • International Relations (IR) • Society and Culture (SC)	April/ September	15	2 years	2,800,000 JPY
<u>International Cooperation Policy</u> (ICP) • International Public Administration (IPA) • Sustainability Science (SS) • Tourism and Hospitality (TH) • Development Economics (DE)	April/ September	45		
• International Material Flow Management (IMAT) Program*1,2	September Only			

*1 In addition to tuition, IMAT students must pay a program fee of 200,000 JPY per year. They must also pay administration fees of approximately 172 EUR per semester during the third and fourth semester to Trier University of Applied Sciences, Environmental Campus Birkenfeld.

*2 In order to obtain a student visa for the second year in Germany, the IMAT students must prepare a blocked account of around 11,208 euros at their disposal for one year. For more information, please visit: www.study-in-germany.de/en/plan-your-studies/requirements/proof-of-financing

Graduate School of Management (GSM) Master of Business Administration	Intake Period	Intake per Year	Standard Period of Completion	Total Tuition
<u>Business Administration</u> (MBA)	April/ September	40	2 years	3,800,000 JPY

Tuition fees vary on the basis of the awarded Tuition Reduction Scholarship. Refer to page 8 for more information.

Standard Period of Completion

The standard period of completion for the master's programs in the Graduate School of Asia Pacific Studies and the MBA program in the Graduate School of Management is two years. This standard period allows for in-depth study and research and provides greater freedom to create a structured course plan. However, if you fulfill certain requirements after enrollment, it may be possible to complete your master's program in less than two years.

The total tuition fees for the programs will not change even if you complete your degree before the standard period of completion. Please refer to the following website for more information:
<http://www.apu.ac.jp/gradinfo/modules/gradinfo/content42/>

2 APPLICATION ELIGIBILITY

Applicants must fulfill the following requirements.

Requirement 1: Educational Qualifications

Applicants must fulfill one of the following conditions at the time of application:

- Have graduated or be scheduled to graduate from a bachelor's program with a standard period of completion of at least 3 years
- Have completed or be scheduled to complete a 16-year standard education curriculum outside of Japan
- Have completed a 15-year standard education curriculum outside Japan and have academic achievements determined to be outstanding by the university
- Be at least 22 years of age and have been individually screened by the graduate school to have the academic ability of a university graduate or higher

If you have other educational qualifications, please contact the Office of International Admissions before applying.

Requirement 2: Language Proficiency

As English is the language of instruction in all graduate classes at APU, applicants must possess the ability to comprehend lectures, undertake independent research, and produce well-written reports in English. **Please refer to page 20 "Documents Proving English Proficiency" for details regarding English language proficiency certification and exemption requirements.**

Minimum English Proficiency Requirement				
TOEFL iBT® Test / TOEFL iBT® HOME Edition	IELTS / IELTS Indicator	TOEIC® L&R Test	PTE Academic	Cambridge English Language Assessment / Lingaskill
85	6.5	800	58	176

Requirement 3: Work Experience (Graduate School of Management Applicants Only)

Applicants must meet one of the following experiential requirements:

- 1) Possess three years of full-time work experience (including full-time internship experience) by the time of enrollment to APU, preferably in a field related to the desired area of study or
- 2) Possess equivalent project or organizational experience such as volunteering activities, activities in NGO/NPO, etc.

Requirement 4: Academic Ability (Internal Applicants Only)

Students who are scheduled to graduate from APU or Ritsumeikan University directly before enrolling into the Graduate School (including those who graduate early or skip grades) must satisfy a cumulative GPA requirement. Students who have a cumulative **GPA of 3.00 and above (APU) or 3.50 and above (Ritsumeikan University)** are preferred.

3 APPLICATION SCHEDULE

The application will open on **September 1, 2023**, and applicants may submit their application at any time before the deadline for their desired application type. Regardless of the time of submission, applications will not be screened until after the corresponding application deadline.

April 2024 Enrollment

Application Type	Who Can Apply		Application Deadline	Final Result Notification	No.*1
	Overseas Applicants	Domestic / Internal Applicants			
AfDB/Rotary Yoneyama Scholarship	✓		Sep 20, 2023 (Wed)	Nov 8, 2023 (Wed)	1
Honjo Scholarship General Application 1	✓	✓			
General Application 2	✓	✓	Oct 18, 2023 (Wed)	Dec 6, 2023 (Wed)	2
General Application 3		✓	Dec 6, 2023 (Wed)	Feb 7, 2024 (Wed)	3

September 2024 Enrollment

Application Type	Who Can Apply		Application Deadline	Final Result Notification	No.*1
	Overseas Applicants	Domestic / Internal Applicants			
Rotary Yoneyama Scholarship	✓		Sep 20, 2023 (Wed)	Nov 8, 2023 (Wed)	1
General / IMAT Application 1	✓	✓			
MEXT Scholarship (UR) ADB / AfDB Scholarship 1	✓		Nov 15, 2023 (Wed)	Jan 31, 2024 (Wed)	4
Honjo Scholarship 1 Yamaoka Scholarship General / IMAT Application 2	✓	✓			
ADB / AfDB Scholarship 2	✓		Jan 17, 2024 (Wed)	Mar 6, 2024 (Wed)	5
Honjo Scholarship 2 General / IMAT Application 3	✓	✓			
General / IMAT Application 4	✓	✓	Mar 27, 2024 (Wed)	May 29, 2024 (Wed)	6
IMAT Application 5	✓	✓	Apr 3, 2024 (Wed)		
General 5 / IMAT Application 6		✓	May 29, 2024 (Wed)	Jul 10, 2024 (Wed)	7

Please refer to pages 9 – 17 for scholarship information.

*1 This corresponds to the numbers shown in the Deadlines for Enrollment Procedures section on page 28. Please make sure to check these deadlines before applying. Deadlines will not be extended under any circumstances.

Final Results

The final application and scholarship results will be posted on the admissions website on the final result notification date. Information regarding how to view the final results will be sent to you by email. Please note that inquiries regarding final results will not be accepted.

Admitted applicants will not be allowed to reapply to the same college for the same enrollment semester (e.g. April 2024 / September 2024). If an admitted applicant does reapply, a new interview and online assessment will not be performed and new results will not be given. The application fee will also not be returned.

DOCTORAL (PH.D.) PROGRAM

1 NUMBER OF STUDENTS ACCEPTED

Graduate School of Asia Pacific Studies (GSA) Doctor of Philosophy	Intake Period	Intake per Year	Standard Period of Completion	Total Tuition
Asia Pacific Studies	April/ September	10	3 years	4,300,000 JPY

Tuition fees vary on the basis of ones awarded Tuition Reduction Scholarship.

Standard Period of Completion

The standard period of completion for the doctoral program in the Graduate School of Asia Pacific Studies is three years. This standard period allows for in-depth study and research and provides greater freedom to create a structured course plan. However, if you fulfill certain requirements after enrollment, it may be possible to complete your doctoral program in less than three years.

The total tuition for the program will not change even if you complete your degree before the standard period of completion. Please refer to the following website for more information:
<http://www.apu.ac.jp/gradinfo/modules/gradinfo/content42/>

2 APPLICATION ELIGIBILITY

Applicants must fulfill the following requirements.

Requirement 1: Educational Qualifications

Applicants must fulfill one of the following conditions at the time of application:

- Have completed or be scheduled to complete a graduate (master's) degree
- Be at least 24 years of age and have been individually screened by the graduate school to have the academic ability of a postgraduate level or higher

If you have other educational qualifications, please contact the Office of International Admissions before applying.

Requirement 2: Language Proficiency

As English is the language of instruction in all graduate classes at APU, applicants must possess the ability to comprehend lectures, undertake independent research, and produce well written reports in English. **Please refer to page 20 "Documents Proving English Proficiency" for details regarding English language proficiency certification and exemption requirements.**

Minimum English Language Proficiency Requirement				
TOEFL iBT® Test/ TOEFL iBT® HOME Edition	IELTS/ IELTS Indicator	TOEIC® L&R Test	PTE Academic	Cambridge English Language Assessment /Lingaskill
85	6.5	800	58	176

Requirement 3: Supervisor Confirmation

Applicants must select a doctoral faculty supervisor before submitting their application to APU. In order to apply, applicants must first contact their desired doctoral faculty supervisor via APU's online **Faculty Supervision Request Form** and receive their agreement to act as the faculty supervisor for the duration of the program. You can find the request form and a current list of faculty supervisors here:
admissions.apu.ac.jp/graduate/academics/gsa_doctor/request

After receiving the agreement of a faculty supervisor, applicants must then request a signed **Supervisor Confirmation Letter** from the desired faculty supervisor. The Supervisor Confirmation Letter must be submitted with the rest of the application documents. It can be downloaded from our website:
admissions.apu.ac.jp/graduate/material_download

Important Notes:

1. Applicants need to attach their research proposal, CV or resume, and master's thesis when contacting a potential faculty supervisor via the online Faculty Supervision Request Form.
2. Applicants **must** submit a completed Supervisor Confirmation Letter before the application deadline in order for the application to be considered.
3. Receiving a signed Supervisor Confirmation Letter **does not** mean you have been admitted to the doctoral program. Receiving a signed Supervisor Confirmation Letter only guarantees your eligibility to apply to the program.

3 PH.D. APPLICATION PROCESS

The process for applying to the doctoral program is as follows:

1. Review the faculty supervisors listed on the admissions website (https://admissions.apu.ac.jp/graduate/academics/gsa_doctor/faculty/) and find a supervisor whose research fields match your proposed area of research.
2. Fill out and send the Faculty Supervision Request Form (be sure to upload your research proposal, CV/resume, and master's thesis in the form) and request a signed Supervisor Confirmation Letter, which can be downloaded from our website: https://admissions.apu.ac.jp/graduate/material_download/
3. Receive the Supervisor Confirmation Letter by email.
4. Submit the Online Application (including PDF versions of the required hard copy application documents and the Supervisor Confirmation Letter) and pay the application fee.
5. Submit the online assessment.

4 APPLICATION SCHEDULE

Applications will open on **September 1, 2023**. Applicants may submit their application at any time before the deadline for their desired application type. Regardless of the time of submission, applications will not be screened until after the corresponding application deadline.

April 2024 Enrollment

Application Type	Who Can Apply		Application Deadline	Final Result Notification	No.*1
	Overseas Applicants	Domestic / Internal Applicants			
Rotary Yoneyama Scholarship	✓		Sep 20, 2023 (Wed)	Nov 8, 2023 (Wed)	1
Honjo Scholarship / General Application 1	✓	✓			
General Application 2	✓	✓	Oct 18, 2023 (Wed)	Dec 6, 2023 (Wed)	2
General Application 3		✓	Dec 6, 2023 (Wed)	Feb 7, 2024 (Wed)	3

September 2024 Enrollment

Application Type	Who Can Apply		Application Deadline	Final Result Notification	No.*1
	Overseas Applicants	Domestic / Internal Applicants			
Rotary Yoneyama Scholarship	✓		Sep 20, 2023 (Wed)	Nov 8, 2023 (Wed)	1
General Application 1	✓	✓			
MEXT Scholarship (UR)	✓		Nov 15, 2023 (Wed)	Jan 31, 2024 (Wed)	4
Honjo Scholarship 1 General Application 2	✓	✓			
Honjo Scholarship 2 General Application 3	✓	✓	Jan 17, 2024 (Wed)	Mar 6, 2024 (Wed)	5
General Application 4	✓	✓	Mar 27, 2024 (Wed)	May 29, 2024 (Wed)	6
General Application 5		✓	May 29, 2024 (Wed)	Jul 10, 2024 (Wed)	7

Please refer to pages 9 – 17 for scholarship information.

*1 This corresponds to the numbers shown in the Deadlines for Enrollment Procedures section on page 28. Please make sure to check these deadlines before applying. Deadlines will not be extended under any circumstances.

Final Results

The final application and scholarship results will be posted on the admissions website on the final result notification date. Information regarding how to view the final results will be sent to you by email. Please note that inquiries regarding final results will not be accepted.

Admitted applicants will not be allowed to reapply to the same college for the same enrollment semester (e.g. April 2024 / September 2024). If an admitted applicant does reapply, a new interview and online assessment will not be performed and new results will not be given. The application fee will also not be returned.

SCHOLARSHIPS

1 APU TUITION REDUCTION SCHOLARSHIP

The APU Tuition Reduction Scholarship covers 30%, 50%, 65%, 80%, or 100% of tuition costs during the standard period of program completion. All applicants can apply for this scholarship within the APU Online Application System upon understanding of the following information.

About the Scholarship

This scholarship is made available by the financial contributions of domestic and international companies and individuals, together with the Japanese Ministry of Education, Culture, Sports, Science and Technology (MEXT) that support the ideals of APU, and its purpose is to help reduce the financial burden for outstanding students. Students awarded with this scholarship are expected to maintain a good academic record, complete the tasks assigned to them, and serve as role models for their country or region.

Application and Selection Process

The scholarship will be decided based on an overall evaluation of the documents submitted for application. Major areas of the application to be evaluated when awarding scholarships are English language proficiency, previous academic records, research proposal/study plan, professional experience (especially for the MBA program), and the online assessment.

Scholarship results will be notified together with the admissions results. The awarded scholarship percentage is final and will not be reconsidered under any circumstances. We strongly encourage applicants to submit their application to APU as early as possible, as earlier applications will have a greater chance at receiving the scholarship. Please note that the APU Tuition Reduction Scholarship will be cancelled if an applicant receives any of the external scholarships that provide a full tuition award.

Assessment for Continuation

A review of academic performance and other criteria will be conducted each semester to determine whether recipients qualify for renewal of the APU Tuition Reduction Scholarship. Provided that the recipients maintain a good academic record, complete assigned tasks on time, and avoid any misconduct unbecoming of a scholarship recipient, their scholarship will remain valid until the standard number of credits required to graduate has been reached. In the case of inappropriate behavior or conduct that tarnishes the reputation of APU, the scholarship will be revoked.

For MBA Applicant

We highly recommend that MBA applicants submit GMAT exam results, as strong emphasis is placed on GMAT results during the application evaluation process. Note that submitting GMAT results may increase your chances of receiving tuition reduction scholarship.

Scholarship Award (Tuition Reduction %)	Amount of Tuition to be Paid by the Student for the First Year	
	GSA (Master's/Doctoral)	GSM
30% Tuition Reduction	910,000 JPY	1,260,000 JPY
50% Tuition Reduction	650,000 JPY	900,000 JPY
65% Tuition Reduction	455,000 JPY	630,000 JPY
80% Tuition Reduction	260,000 JPY	360,000 JPY
100% Tuition Reduction	None	None

Tuition may be subject to change.

2 EXTERNAL SCHOLARSHIPS

APU students are eligible to receive a number of scholarships through organizations outside of APU. Each scholarship has different eligibility requirements and application procedures, so please be sure to review the information on each scholarship organization's website before applying.

Scholarships available by APU program

Scholarship	GSA (Doctoral Program)	GSA (Master's)	GSA (IMAT)	GSM	Application Process
ADB-JSP		✓			Apply to APU
AfDB-JADS		✓		✓	Apply to APU
FUNED Scholarship		✓		✓	① Apply to APU ② Apply to organization
Honjo Scholarship	✓	✓	✓	✓	Apply to both APU and scholarship organization. The applicant must check the application schedule and apply to the scholarship organization independently.
MEXT (Embassy)	✓	✓		✓	① Apply to organization ② Apply to APU
MEXT (UR)	✓	✓		✓	Apply to APU
Nikkei Leader Scholarship	✓	✓			① Apply to APU ② Apply to organization
Nikkei Scholarship	✓	✓		✓	① Apply to organization ② Apply to APU
Rotary Yoneyama	✓	✓		✓	① Apply to APU ② Apply to organization
Yamaoka Scholarship		✓		✓	Apply to APU

- ADB-JSP: Asian Development Bank - Japan Scholarship Program
- AfDB-JADS: African Development Bank - Japan Africa Dream Scholarship
- FUNED Scholarship: FUNDACION MEXICANA PARA LA EDUCACION, LA TECNOLOGIA y LA CIENCIA, A.C.
- Honjo Scholarship: Scholarship for Foreign Students Studying in Japanese Graduate School
- MEXT (Embassy): Japanese Government (MEXT) Embassy Recommendation Scholarship
- MEXT (UR): Japanese Government (MEXT) University Recommendation Scholarship
- Nikkei Leader Scholarship: Japan International Cooperation Agency (JICA) Scholarship for Nikkei Communities in Latin America and the Caribbean: Program for Developing Leaders in Nikkei Communities
- Nikkei Scholarship: The Nippon Foundation Nikkei Scholarship "Dream Come True Project"
- Rotary Yoneyama: Rotary Yoneyama Scholarship for Overseas Candidate
- Yamaoka Scholarship: Yamaoka Scholarship Foundation - Scholarship for International Students

Asian Development Bank – Japan Scholarship Program (ADB-JSP)

About the Scholarship	<p>The ADB-JSP Scholarship aims to provide an opportunity for well-qualified citizens of the Asian Development Bank's (ADB) developing member countries to pursue graduate studies in development-related fields of the Asia Pacific region. APU was selected as a designated institution by ADB in 2010 and will provide this scholarship each year to a few eligible GSA applicants (excluding IMAT program applicants).</p> <p>To be considered for this scholarship, applicants must first apply to APU. APU will then select eligible candidates to recommend to the scholarship organization.</p>
Eligibility Requirements	<ol style="list-style-type: none"> 1. Be a national of an ADB borrowing member country and a Japanese Official Development Assistance scholarship eligible country 2. Not hold dual citizenship of any developed country 3. Not be currently living or working outside of your home country 4. Have at least two years of full-time work experience after obtaining a bachelor's degree at the time of application 5. Be 35 years old or less at the time of application 6. Not already be enrolled in a graduate degree program 7. In principle, not have a bachelor's or master's degree obtained outside of your home country 8. Not be pursuing a second master's degree 9. Not be an executive director, alternate director, management or staff of ADB, nor a consultant or relative of the aforementioned 10. Not be a Staff of ADB-JSP designated institutions 11. Commit to return to, and work in, your home country after completion of the studies for a period of at least two (2) years after completion of the studies 12. Applicant's family income should not exceed US\$50,000 per year, and individual income should not be more than US\$25,000 per year. Applicant must submit Certificate of Income if selected as a scholarship candidate. 13. Intend to enroll at APU in September 2024 <p>Notes:</p> <ul style="list-style-type: none"> • Please refer to the Asian Development Bank website for the country list and further information: adb.org/work-with-us/careers/japan-scholarship-program adb.org/site/careers/japan-scholarship-program/frequently-asked-questions

Award	<ul style="list-style-type: none"> • Full admission fee • Full tuition • 144,000 JPY/month for living expenses (amount subject to change) • Study material and research allowance • Medical insurance • Economy class air travel between the home country and APU at the beginning and end of the program <p>Notes:</p> <ul style="list-style-type: none"> • The initial scholarship period is one year. Extension for the second year will be considered based on the student's academic performance at APU.
Application and Selection Process	<ol style="list-style-type: none"> 1. Request to be considered for this scholarship within the APU online application and submit the application by November 15, 2023 or January 17, 2024 (for September 2024 enrollment) Along with their application, applicants must upload the following document(s): <ul style="list-style-type: none"> • Certificate of Employment issued by the company. If the duration of the current employment is less than two years, also submit a Certificate of Employment from the previous company. The certificate(s) must state the start and end date of the employment, and the monthly/annual income. Alternatively, the latest Income Tax Return may be submitted to certificate applicant's annual/monthly salary. <p>Notes:</p> <ul style="list-style-type: none"> • If the income shown in a local currency, convert and submit an additional USD form (available at admissions.apu.ac.jp/resource/load/documents_2021/Grad_USD_Conv_form.docx) • Computer-generated proof of income without an authorized signature is not acceptable • Documents issued by the company must include the company letterhead/logo and an authorized signature. <ol style="list-style-type: none"> 2. APU reviews application documents and selects suitable candidates to recommend to the ADB-JSP. Selected candidates must prepare additional documents stipulated by the scholarship organization. 3. Applicants selected to be recommended for this scholarship are notified with their final APU application results. 4. The final scholarship award results are decided by ADB-JSP.
URL	adb.org/site/careers/japan-scholarship-program/main

African Development Bank-Japan Africa Dream Scholarship (AfDB-JADS)

About the Scholarship	<p>This scholarship is open to applicants from African Development Bank member countries with relevant professional experience and a history of supporting their countries' development efforts who are applying to a graduate degree program in energy development and related disciplines.</p> <p>To be considered for this scholarship, applicants must first apply to APU. APU will then select eligible candidates to recommend to the scholarship organization.</p>
Eligibility Requirements	<ol style="list-style-type: none"> 1. Be a national of an AfDB member country 2. Be 35 years old or less 3. Have a bachelor's degree (or equivalent degree) 4. Have at least 1 year of full-time working experience after earning a bachelor's degree (or equivalent degree) 5. Not be living or working outside of your home country 6. Not already be enrolled in a graduate degree program 7. Not be an Executive Director, his/her alternate, and/or staff of all types of appointments of the African Development Bank Group or a close relative of the aforementioned by blood or adoption with the term "close relative" defined as: Mother, Father, Sister, Half-sister, Brother, Half-brother, Son, Daughter, Aunt, Uncle, Niece, or Nephew 8. Agree to return to your home country to contribute to its economic and social development after completion of studies under the program
Award	<ul style="list-style-type: none"> • Full tuition • 140,000 JPY per month for living expenses (amount subject to change) • Economy class air travel between the home country and APU at the beginning and end of the program
Application and Selection Process	<ol style="list-style-type: none"> 1. Request to be considered for this scholarship within the APU online application and submit the application by September 20, 2023 (for April 2024 enrollment) or January 17, 2024 (for September 2024 enrollment). 2. APU reviews application documents and selects suitable candidates to recommend to the AfDB-JADS. 3. Applicants selected to be recommended for this scholarship are notified with their final APU application results. 4. The final scholarship award results are decided by AfDB-JADS.
URL	afdb.org/en/about-us/careers/japan-africa-dream-scholarship-jads-program

Scholarship for Foreign Students Studying in Japanese Graduate School (Honjo Scholarship)

About the Scholarship	<p>This scholarship is open to international students who study or plan to study in a Japanese graduate school for doctoral or master's degree. Applications can be submitted from abroad as long as the applicant is accepted into a Japanese graduate school. All nationalities and research fields are welcome. Applicants may directly apply to the foundation without pre-selection by the university.</p> <p>The scholarship is available for all accepted applicants (both admitted and enrolled).</p>
Eligibility Requirements	<ol style="list-style-type: none"> 1. Not have Japanese citizenship 2. Must be currently an admitted applicant or in the process of applying to APU (both master's and doctoral degree) 3. Conversational Japanese language proficiency 4. Master's applicants must start the master's program by the age of 30. / Doctoral applicants must start the doctoral program by the age of 35. <p>For details, please review the application guidelines by the scholarship organization.</p>
Award	<p>The scholarship will be provided every month throughout the minimum period required to acquire the degree. The amount of scholarship depends based on the duration of the studies (amounts subject to change):</p> <p>210,000 JPY per month for 1 - 2 years 190,000 JPY per month for 3 years</p>
Application and Selection Process	<p>Application for April 2024 enrollment:</p> <ol style="list-style-type: none"> 1. Submit your application to APU by September 20, 2023 2. Apply independently to the scholarship organization during the application period (around September - October 2024). The applicant may submit their application even before the results from APU are announced. <p>Application for September 2024 enrollment:</p> <ol style="list-style-type: none"> 1. Submit your application to APU by January 17, 2024 2. Apply independently to the scholarship organization during the application period (around April 2024). The applicant may submit their application even before the results from APU are announced.
URL	<p>hisf.or.jp/en/scholarship/foreigner/</p>

MEXT Scholarship (Embassy Recommendation)

About the Scholarship	<p>This scholarship is provided by the Japanese Ministry of Education, Culture, Sports, Science and Technology (MEXT) through the recommendation of the Japanese embassy in the applicant's home country.</p> <p>To be considered for this scholarship, applicants must first apply through the Japanese embassy. After receiving the primary screening results from the embassy, applicants will then submit certain documents to APU. Most embassies accept applications around April each year, but please contact the embassy in your home country to confirm their application procedures.</p>
Eligibility Requirements	<ol style="list-style-type: none"> 1. Intend to study abroad in Japan from overseas 2. Not have Japanese nationality and be a national of a country that has diplomatic relations with Japan 3. Be born on or after April 2, 1989 4. Be willing to learn Japanese, be interested in Japan, and be willing to deepen your understanding of Japan after arriving in Japan 5. MBA applicants only: Possess three years of full-time work experience (including full-time internship) by the time of enrollment to APU, preferably in a field related to the desired area of study or possess equivalent project or organizational experience <p>Notes:</p> <ul style="list-style-type: none"> • Those who are serving on active military duty or civilians employed by the military at the time of application are not eligible for this scholarship. • Recipients must be able to arrive in Japan during the arrival period stipulated by APU. • Those who apply for this scholarship cannot have received a MEXT scholarship in the past unless they have more than 3 years of educational research experience after the final payment of the previous MEXT scholarship award. • Recipients of this scholarship cannot receive a scholarship from another scholarship organization while studying at APU. • Recipients of this scholarship must have "student" as their status of residence (visa status) in Japan.
Award	<ul style="list-style-type: none"> • Full application fee • Full admission fee • Full tuition • 144,000 JPY per month for living expenses (amount subject to change) • Economy class air travel between the home country and APU at the beginning and end of the program

Application and Selection Process	<ol style="list-style-type: none"> 1. Contact the embassy for further information 2. Submit application documents to the embassy around April or May. 3. Receive the primary screening results from the embassy 4. Submit the APU Graduate External Scholarship Application (available at admissions.apu.ac.jp/graduate/how_to_apply/external_scholarship/embassy). Within the application, submit the following documents: <ul style="list-style-type: none"> • Copies of all documents submitted to the embassy • Copy of the embassy's screening result • Personal Statement (please follow the directions within the application) • (MBA applicants only) Certificate of Employment 5. Receive the "Letter of Acceptance" from APU 6. Submit the "Letter of Acceptance" to the embassy 7. Receive the final decision from the Embassy
URL	mext.go.jp/a_menu/koutou/ryugaku/boshu/1415352.htm

MEXT University Recommendation (UR)

About the Scholarship	<p>This scholarship is awarded to outstanding international students who are recommended by APU. The Japanese Ministry of Education, Culture, Sports, Science and Technology (MEXT) provides this scholarship with the aim of enhancing the international competitiveness and promoting the active exchange of international students in Japanese universities.</p> <p>To be considered for this scholarship, applicants must first apply to APU. APU will then select eligible candidates to recommend to the scholarship organization.</p>
Eligibility Requirements	<ol style="list-style-type: none"> 1. Intend to study abroad in Japan from overseas 2. Be a national of a MEXT designated country 3. Be born on or after April 2, 1989 4. Have achieved a GPA of at least 2.30 on a 3.00 scale at their most recent university <p>Notes:</p> <ul style="list-style-type: none"> • Please refer to the website for the country list and further information: admissions.apu.ac.jp/graduate/how_to_apply/external_scholarship/u_recommendation • Those who are serving on active military duty or civilians employed by the military at the time of application are not eligible for this scholarship. • Recipients must be able to arrive in Japan during the arrival period stipulated by APU. • Those who apply for this scholarship cannot have received a MEXT scholarship in the past unless they have more than 3 years of educational research experience after the final payment of the previous MEXT scholarship award. • Those who apply for this scholarship cannot be applying for another MEXT scholarship. • Recipients of this scholarship cannot receive a scholarship from another scholarship organization while studying at APU. • Recipients of this scholarship must have "student" as their status of residence (visa status) in Japan. • Period of Validity for the English Proficiency Test Score: Only scores of examinations taken on or after March 23, 2022 will be accepted.
Award	<ul style="list-style-type: none"> • Full admission fee • 100% of tuition (covered by the APU Tuition Reduction Scholarship) • 144,000 JPY per month for living expenses (amount subject to change) • Economy class air travel between the home country and APU at the beginning and end of the program
Application and Selection Process	<ol style="list-style-type: none"> 1. Submit the APU application by November 15, 2023 (for September 2024 enrollment). Additional documents are not required to be considered for this scholarship. 2. APU reviews application documents and selects outstanding candidates to recommend to MEXT. 3. Applicants selected to be recommended for this scholarship are notified with their final APU application results. 4. Selected applicants complete and submit additional MEXT application documents to APU. 5. The final scholarship award results are decided by MEXT.

Japan International Cooperation Agency (JICA) Scholarship for Nikkei Communities in Latin America and the Caribbean: Program for Developing Leaders in Nikkei Communities (Nikkei Leader Scholarship)

<p>About the Scholarship</p>	<p>The aim of this scholarship program is to assist Japanese emigrants in their resettlement efforts and to help them establish their lives overseas by nurturing future leaders among Nikkei communities.</p> <p>To be considered for this scholarship, applicants must first apply to APU. After being accepted to APU, applicants must then apply to the scholarship organization directly.</p>
<p>Eligibility Requirements</p>	<ol style="list-style-type: none"> 1. Be a Japanese emigrant and descendant (in principle, up to third generation Nikkei) 2. Be a national of Argentina, Bolivia, Brazil, Chile, Colombia, the Dominican Republic, Mexico, Paraguay, Peru, Uruguay, or Venezuela 3. Be 40 years old or less as of April 1, 2024 (born after April 2, 1984) 4. Have Japanese language ability sufficient for daily life in Japan 5. Intend to enroll at APU in April or September 2024 <p>Notes:</p> <ul style="list-style-type: none"> • Those who are serving on active military duty or civilians employed by the military at the time of application are not eligible for this scholarship. • Those who are currently employed must resign or take a leave of absence from work prior to enrolling at APU. • Those who are scheduled to receive a scholarship or financial aid from another organization while studying at APU are not eligible to apply for this scholarship. • Those who plan to engage in employment while studying at APU are not eligible to apply for this scholarship. • Recipients must have “student” as their status of residence (visa status) while studying in Japan and are not allowed to engage in work activities other than those permitted by the Ministry of Justice of Japan.
<p>Award</p>	<ul style="list-style-type: none"> • Full admission fee • Full tuition • Approximately 5,000 JPY per day for living expenses (amount subject to change) • 100,000 JPY for purchasing daily necessities upon arrival in Japan • 164,000-224,000 JPY moving (housing) allowance • 6,000 JPY document shipping allowance • Economy class air travel between the home country and APU at the beginning and end of the program
<p>Application and Selection Process</p>	<ol style="list-style-type: none"> 1. If you plan to apply for this scholarship, please contact APU by email (apugrad@apu.ac.jp) by the end of August 2023. APU will inform you individually regarding how to receive the informal written consent from your graduate program supervisor. 2. Receive the acceptance letter from APU 3. Submit the Nikkei Leadership Scholarship application before the stipulated application deadline (Please refer to the scholarship program website for details regarding the required application documents and deadlines. For reference, last year’s deadline was September 25.) 4. Attend an interview at a JICA overseas office or at its headquarters in mid-October 2023 5. The JICA headquarters will make the final scholarship decisions in late October 2023. 6. The final scholarship award results are announced by the JICA headquarters via its overseas offices in November 2023.
<p>URL</p>	<p>jadesas.or.jp/jp/kenshu2</p>

The Nippon Foundation Nikkei Scholarship "Dream Come True Project" (Nikkei Scholarship)

<p>About the Scholarship</p>	<p>This scholarship project aims to provide opportunities to study in Japan for young Japanese descendants having definite plans and dreams of promoting understanding between their country of residence and Japan as well as contributing to the development of their country of residence and local communities.</p> <p>To be considered for this scholarship, applicants must first be recommended by an overseas Japanese descendant organization and apply to the Nikkei Scholarship directly. Applicants must then apply to APU afterwards.</p>
-------------------------------------	--

Admissions Guidelines

Master's Programs

Doctoral (Ph.D.) Program

Scholarships

Application Process

From Acceptance to Enrollment

<p>Eligibility Requirements</p>	<ol style="list-style-type: none"> 1. Be a Japanese descendant (regardless of nationality, educational background or previous visits to Japan) 2. Be a national of a Central or South American country (Argentina, Bolivia, Brazil, Chile, Colombia, the Dominican Republic, Mexico, Paraguay, Peru, etc.) 3. Be between 18 to 35 years old 4. Be recommended by an overseas Japanese descendant organization 5. Have a dream of acquiring technical knowledge and, after returning home, playing an active role in your country of residence and local community 6. Have a dream of working as a bridge between your country of residence and Japan by making the most of your overseas study experience 7. Be willing to participate in international student volunteer activities and social action programs 8. Intend to enroll at APU in April or September 2024
<p>Award</p>	<ul style="list-style-type: none"> • Full admission fee • Full tuition • 130,000 JPY per month for living expenses (amount subject to change) • Up to 50,000 JPY per month for housing expenses • Up to 200,000 JPY for key money • Expenses for group workshops and participation fees for academic conferences • Additional living expenses (student commuter pass, medical insurance premiums, etc.) • Economy class air travel between the home country and APU at the beginning and end of the program
<p>Application and Selection Process</p>	<ol style="list-style-type: none"> 1. Submit the Nikkei Scholarship application by the middle of July 2023 (please refer to the scholarship program website for details regarding the required application documents and deadlines). 2. If you submitted an application for this scholarship, contact APU by email (apugrad@apu.ac.jp) by the end of August 2023. APU will inform you regarding the application process and the schedule for up until you receive the Letter of Enrollment Approval (Certificate of Expected Enrollment). 3. Pass the document screening in early August 4. Attend an interview with the Nikkei Scholarship in September/October 2023 5. The final scholarship award results are announced by the Nikkei Scholarship in late October <p>Please be sure to check the website below to see if there are any additional changes from last year.</p>
<p>URL</p>	<p>jadesas.or.jp/en/scholarship</p>

Rotary Yoneyama Scholarship for Overseas Candidate (Rotary Yoneyama Scholarship)

<p>About the Scholarship</p>	<p>Rotary Yoneyama Scholarship for Overseas Candidate is for international students located outside Japan that are scheduled to enroll in APU's Graduate School. Both master's and doctoral program applicants are welcome to apply.</p> <p>The applicant must apply to both APU and the scholarship organization independently. Review the application and selection process thoroughly for both APU and the scholarship organization.</p>
<p>Eligibility Requirements</p>	<ol style="list-style-type: none"> 1. Must not hold Japanese nationality (dual nationality holders included) 2. Must obtain a student visa to enter Japan for the purpose of study 3. Residing outside Japan until the start of the program 4. Have not resided in Japan for longer than 31 days in total. If the stay exceeded 31 days, it was due to a family situation (only applicable if applicant had not completed compulsory education at the time), or the applicant was residing in Japan under the Rotary Youth Exchange high school program. 5. Japanese language proficiency at least equivalent to JLPT N4 or above 6. Born after April 2, 1979 7. Have not previously been a Rotary Yoneyama Scholar <p>For details regarding eligibility requirements and other obligations, please review the application guidelines on the scholarship organization website.</p>
<p>Award</p>	<ul style="list-style-type: none"> • Master's students: 140,000 JPY per month for two years • Doctoral students: 140,000 JPY per month for two years • Economy air travel and other travel related expenses reimbursed up to 250,000 JPY after arrival in Japan

Application and Selection Process	<p>Application for both April and September 2024 enrollment:</p> <ol style="list-style-type: none"> 1. Request to be considered as a Rotary Yoneyama scholarship candidate in the APU Online Application System and submit the application to APU by September 20, 2023.* 2. Apply directly to the scholarship organization around October 2023. Notify the scholarship organization that the Letter of Recommendation from the desired university will be issued after the application deadline. 3. APU provides a Letter of Recommendation for the selected scholarship candidates after the admissions results notification. The results from APU will be announced on November 8, 2023. 4. Submit the Letter of Recommendation to the scholarship organization. <p>*If you have received a conditional selection from the Rotary Yoneyama scholarship organization but missed the application deadline to APU, please contact us.</p>
URL	rotary-yoneyama.or.jp/english/overseas/

Yamaoka Scholarship

About the Scholarship	<p>Yamaoka Scholarship Foundation was founded by Yanmar Co., Ltd, a major Japanese agricultural and construction equipment manufacturer, with a mission to support cultivating the necessary skills to contribute to the world peace and the development of society and culture. By providing equal opportunities to receive higher education, the foundation strives towards the realization of a society where people can work and live with peace of mind.</p> <p>To be considered for this scholarship, applicants must first apply to APU. APU will then select eligible candidates to recommend to the scholarship organization.</p>
Eligibility Requirements	<ol style="list-style-type: none"> 1. Eligible countries: Armenia, Azerbaijan, Bangladesh, Bhutan, Cambodia, East Timor, Georgia, India, Indonesia, Kazakhstan, Kyrgyz, Laos, Malaysia, Maldives, Mongolia, Myanmar, Nepal, Pakistan, Philippines, Sri Lanka, Tajikistan, Thailand, Turkmenistan, Viet Nam, Uzbekistan 2. Strong intent to enroll to APU 3. Excellent personal and academic qualities, and in good health 4. In need of economic assistance: annual household income less than five million Japanese yen. (The household income will be checked by the university.) 5. In principle under 35 years old 6. If receiving a scholarship from another scholarship organization, the monthly amount must be less than 50,000 Japanese yen. 7. Scholar must attend scholarship foundation activities.
Award	Monthly stipend of 100,000 Japanese Yen (duration: two years)
Application and Selection Process	<p>Available for September 2024 enrollment only.</p> <ol style="list-style-type: none"> 1. Request to be considered as a Yamaoka scholarship candidate in the APU Online Application System and submit the application to APU by November 15, 2023. 2. APU reviews application documents and selects suitable candidates to recommend to the Yamaoka Scholarship Foundation. Selected candidates must prepare additional documents to be submitted to the scholarship organization: <ul style="list-style-type: none"> • Application Form • Essay "My reasons for studying in Japan and future plans". Length: 2000 words in English (A4 paper) • Letter of Intent to APU 3. Selected candidates will be requested to attend an interview (candidates residing in Japan may be requested to attend the interview in person) 4. Finals results decided by the scholarship organization are announced by mid-June.
URL	www.yanmar.com/jp/about/company/fund

3 ADDITIONAL EXTERNAL SCHOLARSHIPS

APU also accepts graduate students on scholarship programs from other organizations. Please refer to their websites for details regarding eligibilities and application procedures.

FUNED Scholarship (for Mexican nationals)
funedmx.org

4 EXTERNAL SCHOLARSHIPS AVAILABLE AFTER ENROLLING AT APU

Reservation Program for the Monbukagakusho Honors Scholarship for Privately-Financed International Students by Pre-arrival Admission (JASSO Scholarship)

About the Scholarship	<p>This scholarship is awarded to privately financed international students with excellent academic and character records who have received pre-arrival admission to APU's Graduate School and are facing financial difficulties.</p> <p>APU will apply for this scholarship on behalf of international students once they are accepted to APU. Successful recipients of this scholarship will be notified after enrollment.</p>
Eligibility Requirements	<ol style="list-style-type: none"> 1. Does not have a Japanese nationality 2. Must obtain a student visa to study in Japan before enrolling at APU. 3. Intend to study in Japan from overseas, and currently do not have long-term residence in Japan. 4. Privately financed student 5. The average monthly remittance is 90,000 JPY or less (excluding expenses for admission fees and tuition, etc.). 6. (Applicable only if the dependent will reside in Japan) The annual income of the dependent must be less than five million yen.
Award	<p>48,000 JPY per month for living expenses (amount subject to change)</p> <p>Note: The scholarship award period depends on the time of enrollment:</p> <ul style="list-style-type: none"> • April 2024 enrollment: 12 months • September 2024 enrollment: 6 months • Students must reside in Japan during their studies to receive the monthly allowance.
URL	<p>jasso.go.jp/en/study_j/scholarships/shoureihi/index.html List of countries: admissions.apu.ac.jp/graduate/how_to_apply/external_scholarship/JASSO</p>

The Monbukagakusho Honors Scholarship for Privately-Financed International Students who participated the Study in Japan Global Network Project (JASSO Study in Japan Scholarship)

About the Scholarship	<p>This scholarship is awarded to privately financed international students with excellent academic and character records who have received pre-arrival admission to APU's Graduate School and are facing financial difficulties. In addition, the student must have attended an event organized by Study in Japan Global Network Project prior to applying to APU.</p> <p>Those wishing to apply for this scholarship must state their event attendance in the APU Online Application. APU will apply for this scholarship on behalf of international students once they are accepted to APU. Successful recipients of this scholarship will be notified after enrollment.</p>
Eligibility Requirements	<ol style="list-style-type: none"> 1. Must have participated in any activities listed below organized by the Study in Japan Global Network Project prior to finishing application to APU <ul style="list-style-type: none"> • Consultation with overseas study coordinators and network organizations • Participated in education fairs (physical or online) organized by Study in Japan Global Network Project • Visited overseas network organization offices 2. Must hold a nationality of a country or region designated by the Ministry of Education, Culture, Sports, Science and Technology, and does not have Japanese nationality 3. Must obtain a student visa to study in Japan before enrolling at APU 4. Privately financed student 5. The average monthly remittance is 90,000 JPY or less (excluding expenses for admission fees and tuition, etc.) 6. (Applicable only if the dependent will reside in Japan) The annual income of the dependent must be less than five million yen
Award	<p>48,000 JPY per month for living expenses (amount subject to change)</p> <p>Notes: The scholarship award period depends on the time of enrollment:</p> <ul style="list-style-type: none"> • April 2024 enrollment: 12 months • September 2024 enrollment: 6 months • Students must reside in Japan during their studies to receive the monthly allowance • Enrolled students are also eligible to apply for this scholarship
URL	<p>Details about the Study in Japan Global Network Project and List of country: admissions.apu.ac.jp/graduate/how_to_apply/external_scholarship/JASSOB</p>

The Ryoichi Sasakawa Young Leaders Fellowship Fund (Sylff)

About the Scholarship	Ryoichi Sasakawa Young Leaders Fellowship Fund (Sylff) has been established at Ritsumeikan Asia Pacific University thanks to the kindness of The Tokyo Foundations for Policy Research's The Ryoichi Sasakawa Young Leaders Fellowship Fund (Sylff). The scholarship aims to cultivate future leaders who will be active both domestically and internationally. Every year, one student from each graduate school will be nominated for the scholarship.
Eligibility Requirements	<ol style="list-style-type: none"> Graduate school student Master's: 2nd or 3rd semester Doctoral: 2nd, 3rd, 4th or 5th semester Privately-financed Research topic related with the basic theme of "<i>Issues and Opportunities Facing the Asia-Pacific Region: Rapid Transformation amid Accelerating Globalization</i>". The research must take a cross-disciplinary approach to tackle global issues and overcoming differences between nationalities, languages, religions and political systems.
Award	187,500 JPY/month for the duration of 8 months (subject to change)
Application and Selection Process	Application guidelines will be provided after the enrollment.
URL	Visit APU Student Office for the latest information https://en.apu.ac.jp/studentsupport/page/content0359.html

Other Scholarships Available After Enrollment

Other external scholarships may also be available to students after beginning their studies at APU. If eligible, students can apply for these scholarships through APU's Student Office on campus. Further information about scholarships available after enrollment can be found on our official website (www.en.apu.ac.jp/home/life/content31)

Please note that some of the scholarships listed on the website are only available for undergraduate students and that scholarship details may be provided only in Japanese.

Scholarships available to international students for studying in Japan are also listed on the following website.

Independent Administrative Institution Japan Student Services Organization (JASSO)

www.jasso.go.jp/en/study_j/scholarships/index.html

Notes for All External Scholarships

- Due to the time required to create a bank account and arrival procedures, students will not receive the first installment of living expenses until at least one month after arriving in Japan. Scholarship recipients are therefore advised to bring at least 100,000 JPY along with them to Japan to cover initial expenses.
- If the applicant cannot arrive in Japan during the set arrival period, travel expenses to Japan will not be paid to applicants expected to receive them. Furthermore, if the arrival is delayed for a considerable period of time, the scholarship may be revoked.
- Those who have or will receive scholarships from other institutions, including their own government, will not be selected for these scholarships.
- Any false statements made in the application documents could be grounds for revoking a grantee's scholarship at a later date.
- The 2024 application guidelines for these scholarships have not yet been announced, so there may be changes to the eligibility requirements and/or scholarship awards. In addition, detailed rules and conditions that applicants must comply with to receive the scholarship are available on each organization's website. Please be sure to confirm the regulations before applying.
- If you would like to apply for both the Nikkei Leader Scholarship and the Nikkei Scholarship, please consult with both scholarship organizations before applying to APU.

APPLICATION PROCESS

1 ONLINE APPLICATION

1. Visit APU's admissions website and begin your online application (admissions.apu.ac.jp/graduate/apply_online).
2. Upload a digital copy of all required application documents within the online application.
3. **Pay the application fee and submit your online application.**
4. Submit your online assessment by 23:59 (Japan time) on the day of the application deadline.

IMPORTANT Notes for the Online Application

1. Applicants must complete the application and prepare the related documents by themselves. All the information within the application and documents must be submitted in English.
2. Within the online application, please **upload digital copies of the original versions** of the required documents listed on pages 18 – 22. For documents not written in English, please also upload an official translation that includes the translator's name, address, contact details, and signature or official seal. APU will only accept translations created by the original document's issuing institution, a translation company, or a licensed translator.
3. Your application may be rejected if it or any accompanying documents contain forgery, false information, and/or plagiarism, or you were found to be cheating in the application process. Additionally, your admission to APU will be revoked even if evidence of such acts is found after your acceptance or enrollment. You may also be prevented from reapplying to APU in the future. Further information about our forgery policy can be found on the admissions website (https://admissions.apu.ac.jp/graduate/how_to_apply/forgery_policy).
4. If applicants had enrolled at APU previously, APU will also use the maintained information of those applicants for the screening process. The information of applicants that will be used are about the overall student life, specifically the transcripts at the time being enrolled, information about rewards and punishments while enrolled and whether applicants had obeyed properly to the Immigration Control and Refugee Recognition Act while enrolled, etc.
5. **After being accepted to APU, enrolling students must submit certified copies of uploaded application documents to APU by post. Make sure to hold on to any documents you submit during the application process.** Your acceptance to APU will be revoked if your documents submitted after acceptance differ from those uploaded with your online application, or if you are not able to submit the necessary documents.

*A certified document is one that has been marked as being equivalent to the original with a stamp or seal by the issuing institution (preferred) or a notary public. Detailed information about how to get a document certified can be found on the admissions website (https://admissions.apu.ac.jp/graduate/material_download/).

Required Documents to be Uploaded by All Applicants

<p>1) Applicant Information</p>	<p>Please enter all the required information within the online application. Personal information should be entered as shown on your passport.</p> <p>Notes on sex as shown on your passport: *In order for the university to operate in accordance with Japanese laws and regulations, applicants must input their sex as registered on legal documents. Information regarding sex will be used for university registration but will not affect the results of the admission screening or selection process in any way. For information about APU's response to sexual and gender diversity, refer to page 34 for APU's Policy Statement on Sexual and Gender Diversity.</p> <p>As the university application system only provides two options (male or female) at this time, choose one of the two as shown on or will be shown on your passport. If your passport indicates a third option or if you would like to share more about your gender identity, contact the Office of International Admissions at apugrad@apu.ac.jp.</p>
--	---

<p>2) Personal Statement</p>	<p>Please write a statement according to the instructions below explaining the reason you would like to enroll in Ritsumeikan Asia Pacific University's Graduate School. The length of the personal statement must be at least one A4 page, but no longer than two pages of typed text.</p> <p>Rather than answering the following questions individually, please write one continuous essay. Your statement should include responses to the following:</p> <ol style="list-style-type: none"> 1. What attracted you to this program? 2. How will your present academic achievements and professional experience help you succeed in this program? 3. What are your future goals and career objectives? 4. How will an advanced degree in your chosen area of study help you achieve these goals and objectives? <p>Additional questions for MBA applicants only:</p> <ol style="list-style-type: none"> 5. Describe your past work experience in detail, if any, and your future career plans. <p>Additional questions for IMAT applicants only:</p> <ol style="list-style-type: none"> 6. How did you find out about the IMAT program? 7. Why are you interested in studying Material Flow Management?
<p>3) Research Proposal/Study Plan</p>	<p>Research Proposal (Graduate School of Asia Pacific Studies):</p> <p>Please submit a research proposal of at least four to six A4 pages (doctoral applicants: 15 to 20 pages) of typed/printed text addressing the following points. Rather than answering each point individually, please write one continuous proposal.</p> <ol style="list-style-type: none"> 1. A brief literature review of sources related to your proposed research topic. 2. Specific research questions and objectives of your research, and how they relate to your intended program at APU. 3. The research methodology you intend to use to complete your research. 4. Potential significance of your proposed research. <p>Study Plan (MBA program):</p> <p>Please provide an outline of your study plans in the MBA program. The plan should be approximately two A4 pages of typed/printed text.</p> <p>Rather than answering each point individually, please write one continuous plan. Your study plan should address the following:</p> <ol style="list-style-type: none"> 1. Start with an outline of your work experience. Please describe your work history, including company name and industry, work area, responsibility, and what you learned. Tell us experiences that you managed well, as well as experiences that you found challenging and in which you expect an MBA program to be helpful for your further development. (approx. 500 words) 2. Relate your planned university study to your career to date, current business or work-related activities, and your future career path. What benefit would your studies in Japan have for your intended career? (approx. 500 words) 3. Describe a research topic or a business plan you would like to pursue as your MBA research project. Possible research topics include managerial problems, economic issues, and statistical inquiries. Possible business plans include business startups and expansion plans for existing companies and organizations. (approx. 500 words)
<p>4) University Graduation Certificate(s)/Certificate of Scheduled Graduation</p>	<p>All applicants must submit proof of graduation from every university attended. If you are currently attending a university for a bachelor's or master's program, you must submit proof that the program will be completed prior to your intended date of enrollment at APU. High school graduation certificates are not required. The date of enrollment is April 1 for spring enrollment and September 21 for fall enrollment.</p>
<p>5) Academic Transcripts</p>	<p>All applicants must submit a transcript of grades for all university study to date along with information about the grading system.</p> <p>If you have attended a language school or higher education institution in Japan for any length of time, please also submit academic transcripts and attendance reports covering your entire period of study.</p>

6) Documents Proving English Proficiency Required for all applicants who do not meet the exemption requirements

Please upload a digital copy of the original results from one of the accepted English language proficiency exams using the method specified below.

Score Validity Period

- April 2024 Enrollment: Only scores of examinations taken on or after **June 1, 2021** will be accepted.
- September 2024 Enrollment: Only scores of examinations taken on or after **September 1, 2021** will be accepted.
- The score validity period requirement for English test scores is different for MEXT UR Scholarship. Please refer to page 12 for details.

Additional Notes for Submitting Results

- **TOEFL® iBT Test / TOEFL® iBT Home Edition:**
Upload a digital copy of the score report within the online application. MyBest scores are accepted.
- **IELTS / IELTS Indicator:**
Upload a digital copy of the Test Report Form within the online application.
- **TOEIC® L&R Test:**
Upload a digital copy of the original score report within the online application.
- **PTE Academic:**
Upload a digital copy of the score report within the online application.
- **Cambridge English Language Assessment / Lingaskill:**
 - ① Input the ID Number and Secret Number within the online application.
 - ② Upload a digital copy of the result statement within the online application.

TOEFL® ITP Test, IELTS (General Training Module), TOEIC® L&R Test (IP), and PTE General are not accepted.

Exemption Requirements

The following applicants are exempt from having to provide documents proving English proficiency:

Master's applicants

- Applicants who have graduated or are scheduled to graduate from a bachelor's or master's degree program in Antigua and Barbuda, Australia, the Bahamas, Barbados, Belize, Canada (excluding Quebec), Dominica, Fiji, Grenada, Guyana, Ireland, Jamaica, New Zealand, Papua New Guinea, St Kitts and Nevis, Singapore, St Lucia, St Vincent and the Grenadines, Trinidad and Tobago, UK, or USA.
- Applicants who can certify that they have graduated or are scheduled to graduate from a bachelor's or master's degree program offered in English in a country other than those listed above.

Doctoral applicants

- Applicants who can certify that they have graduated or are scheduled to graduate from a master's degree program in Antigua and Barbuda, Australia, the Bahamas, Barbados, Belize, Canada (excluding Quebec), Dominica, Fiji, Grenada, Guyana, Ireland, Jamaica, New Zealand, Papua New Guinea, St Kitts and Nevis, Singapore, St Lucia, St Vincent and the Grenadines, Trinidad and Tobago, UK, or USA.
- Applicants who can certify that they have graduated or are scheduled to graduate from a master's degree program offered entirely in English in a country other than those listed above.
- Applicants who can submit a master's thesis or a draft of a master's thesis written in English. (Research report is not acceptable.)

Clear documented proof must be included with the application. Proof may be in the form of an official letter from the institution or any other official document such as a transcript indicating the language of instruction.

Applicants who do not meet the above requirements will not be considered. No exceptions will be made.

<p>7) Two Letters of Recommendation</p>	<p>When you input the necessary information about your recommender into the related sections in the APU Online Application System, the Letter of Recommendation form will be automatically sent to your recommender by email. Make sure to confirm with your recommender that it has been delivered successfully. The recommender may use an online form provided by APU or upload a PDF in a format of their choosing. You will not be able to see the submitted form, but you will be able to check the submission status of the form within the APU Online Application System.</p> <p>One letter must be written by a university instructor who knows you well enough to write the recommendation. The second letter can be written by another instructor, employer, or someone who is a non-relative and knows you on a professional or academic level. Your recommenders should submit their letter of recommendation by your application deadline.</p> <p>Please note that APU will only be able to accept letters of recommendation written in English.</p>
<p>8) Passport Scan (if available)</p>	<p>If you have a valid passport, please upload a digital copy of the information page showing your name, photograph, and passport number. If you have previously entered Japan, please also submit a copy of your passport pages with the immigration stamps showing your most recent arrival to and departure from Japan. Applicants who do not have a valid passport are still eligible to apply.</p>
<p>9) Photograph</p>	<p>Please upload a photograph of yourself taken within the past three months, showing a front view above chest level with a plain background. Caps and hats are not allowed. Photographs may be in color or black and white.</p>
<p>10) Curriculum Vitae Required only for applicants to MBA or IMAT program.</p>	<p>A summary of the applicant's employment history, qualifications, education, and personal information on at most two A4 pages.</p>
<p>11) Sample Work or List of Research Achievements Required only for applicants to the doctoral program or IMAT program.</p>	<p>Applicants must submit either examples or a list of previous papers written and/or presentations made which are relevant to their proposed field of study. Ph.D. applicants should also submit a copy of their master's thesis. If the sample work is in a language other than English, please submit an English abstract.</p>
<p>12) Supervisor Confirmation Letter Required only for doctoral program applicants.</p>	<p>Doctoral program applicants must submit a signed Supervisor Confirmation Letter with their application. Please see page 6 for more details. The Supervisor Confirmation Letter may be downloaded from our website: admissions.apu.ac.jp/graduate/material_download</p>
<p>13) Certificate of Employment Required only for MBA applicants.</p>	<p>If you have previous full-time work experience, please upload a digital copy of written proof of your employment. This proof may be in the form of a certificate of employment issued by your employer or a letter authorized by your former place of work that shows the period of employment and a simple description of your duties. This certificate or letter should also show the name and contact information of the employer in case we need to contact them to confirm the details given.</p> <p>If you wish to have full-time internship or volunteer experience included as equivalent to full-time work experience, you must also upload documentation that clearly proves this. This may be in the form of a letter from the internship provider or volunteer organization stating the number of hours worked per week and the length of time worked, description of duties, or an income statement showing the amount paid from that internship.</p> <p>The certificate or letter can be in any format you choose but must be written in English or have an English translation attached.</p> <p>If you do not have three years of full-time work experience at the time of application but will have three full years by the time you enroll at APU, you must submit an official Certificate of Employment verifying your total work experience to the Office of International Admissions upon enrollment.</p>

<p>14-1) GMAT® Results Recommended but not mandatory.</p>	<p>We highly recommend that MBA applicants submit GMAT exam results, as strong emphasis is placed on GMAT results during the application evaluation process. Note that submitting GMAT results may increase your chances of receiving tuition reduction scholarship.</p> <ol style="list-style-type: none"> ① Request to have the score report sent directly to APU from the test center's website. The APU Institution Code: 2791, Program Code: 6VF-X6-86. ② Input the date you requested to have the score report sent to APU within the online application. ③ Upload a digital copy of the score report within the online application. <p>Test results are valid for five years from the test date. For more information regarding the official GMAT®, please refer to the following website: www.mba.com/the-gmat.</p>
<p>14-2) GRE® Results Recommended but not mandatory.</p>	<p>We highly recommend that GSA and MBA applicants submit GRE test results, as strong emphasis is placed on GRE results during the application evaluation process.</p> <p>GRE® General Test at Home (www.ets.org/s/cv/gre/at-home) is also accepted.</p> <ol style="list-style-type: none"> ① Request to have the score report sent directly to APU from the test center's website. The APU Institution Code: 7116. ② Input the date you requested to have the score report sent to APU within the online application. ③ Upload a digital copy of the score report within the online application. <p>Test results are valid for five years from the test date. For more information regarding the GRE® test, please refer to the following website: www.gre.org.</p>

Additional Documents for Submission (if applicable)

<p>1) Residence Card (both sides) / Certificate of Residence</p>	<p>If you live in Japan and do not possess Japanese nationality: Please upload a digital copy of both sides of your residence card within the online application.</p> <p>If you live in Japan and possess Japanese nationality: Please upload a digital copy of your Certificate of Residence (住民票) within the online application.</p>
<p>2) Proof of Scholarships Received from Organizations Other than APU</p>	<p>Applicants who are due to receive scholarships offered by organizations other than APU after admission are required to submit proof of the scholarship award.</p>
<p>3) Additional Required Documents for Each External Scholarship</p>	<p>Please upload any additional required documents listed under “Application and Selection Process” on pages 9 – 15 for the external scholarship that you are applying for.</p>
<p>4) Designation Page in Your Passport <small>Only for applicants who have a valid Specified Visa – Designated Activities</small></p>	<p>If you have a valid Specified Visa – Designated Activities: Please upload a digital copy of the Designation Page in your passport that shows the category of your Specified Visa – Designated Activities (e.g. working holiday, internship). In addition, please confirm with the Japanese immigration bureau in your area of jurisdiction that your status of residence can be changed to “student” while you are residing in Japan. Notify the Office of International Admissions promptly if you find that your status cannot be changed in Japan.</p>

2 NOTES ON CREATING RESEARCH PROPOSAL AND STUDY PLAN ETC.

At Ritsumeikan Asia Pacific University, we seek applicants who possess the following qualities and abilities, as outlined in our Admission Policy:

1. Specialized knowledge and global perspective required to pursue advanced studies in one's graduate school and division
2. Analytical skills, perceptiveness, and aptitude to solve real-world problems
3. Requisite English language proficiency for research and study
4. Desire to contribute to and make full use of a multicultural collaborative learning environment

To assess these qualities and abilities, we request the submission of Research Proposal, Study Plan, personal statements, and online recorded video interviews. When submitting these documents, please keep the following points in mind:

Originality of research

Universities are places to pursue learning and seek truth. Especially for those studying at the graduate school level, there are many opportunities to engage in advanced research and create papers and reports. What is important in these cases is your own original ideas and opinions. It goes without saying that the contents found in previous studies, other people's ideas, information obtained from internet searches, and even information output by generative AI systems like ChatGPT, are not one's own thoughts and achievements. Directly using such content may not only lack originality but also lead to plagiarism, copyright infringement, and ethical issues in research. Learning from previous studies, exchanging ideas with others, and utilizing generative AI are important for deepening research, but these activities should be part of the process of driving your own answers, and the outcomes should include originality.

Plagiarism

Plagiarism refers to the unauthorized replication or reproduction of copyrighted material in Research Proposal or other documents without proper citation. It is an act that goes against the rules and morals of academia. Not only academic papers, books, reports created by others, or internet sources but also information output by generative AI can be treated as plagiarism if used without proper citation. Such acts of plagiarism are violations of copyright law and can result in imprisonment or fines. Ritsumeikan Asia Pacific University considers these forms of plagiarism, inappropriate citations, and data fabrication as acts of misconduct. At Ritsumeikan Asia Pacific University, students are expected to use the APA (American Psychological Association) style for citing references in papers and reports. You are free to use writing styles other than APA for application documents, but please consider it as a reference. When using generative AI, please refer to the following rules.

Self-plagiarism

At Ritsumeikan Asia Pacific University, if you utilize your past graduation theses or class reports to write Research Proposal, Study Plan or other documents, it will also be considered as self-plagiarism. When quoting from your own past documents, including those that have not been published or presented at academic conferences, please provide proper references, following the examples below. While it is acceptable to consistently study the same research topic from your undergraduate to graduate studies, if you write Research Proposal, Study Plan or other documents using content from your past research, even with proper citations, you may receive a lower evaluation if the developmental nature of the research is not recognized.

If you are using parts or the entire content of a research plan for application documents to other universities, our application system provides a question where you can report this situation. Please make use of it.

Example of statement if AI is used:

Authors must disclose the use of generative AI and AI-assisted technologies and purpose for the use in the writing process by adding a statement at the end of their manuscript, before the References list.

Statement: During the preparation of this work the author used [the name of the model] in order to [REASON].

Citation example to avoid self-plagiarism:

In-text citation (Author, year)

The stock estimate process, on which such cooperation is based, must be founded on science. However, separating "politics" out of the scientific process is difficult, and the appropriate "distance" within the industry-academic-government cooperation varies from a country to another, as well as from one international regime to another. (Sato, 2018).

Reference

Author. (year). title of paper, *Unpublished manuscript submitted in class of "Name of class"*. Name of University.

Sato, Y. (2018). Scientific knowledge and policymaking--a comparative study of international tuna resource management regimes, *Unpublished manuscript submitted in class of "Environment and Natural Resources Conservation"*. Ritsumeikan Asia Pacific University.

Sato, Y. (2018). Scientific knowledge and policymaking--a comparative study of international tuna resource management regimes, *Unpublished manuscript submitted as final paper*. Ritsumeikan Asia Pacific University.

3 APPLICATION FEE

Please pay the application fee by credit card before you submit the online application. We will accept payment by bank transfer (international or domestic) only if you cannot pay by credit card. Applications are considered complete only when the application fee has been paid and the online application has been submitted.

Doctoral applicants applying directly to the doctoral program after completing a master's degree at APU are not required to pay the application fee.

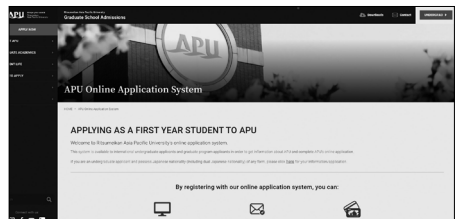
IMPORTANT

1. Applications will not be processed until the application fee is paid. Make sure to complete the fee payment before the application deadline. Note that credit card payments will not be possible **after 23:59 (Japan Time)** on the day of the deadline.
2. The payment must be made in Japanese yen (JPY). If you pay by bank transfer (international or domestic), please submit a copy of the payment receipt with your application.
3. Cash or postal money orders will not be accepted.
4. In principle, the application fee is not refundable. However, a partial refund (after administrative fees are deducted) or a full refund may be possible in the following cases:
 - The application fee has been paid multiple times, or the paid amount clearly exceeds the application fee and administrative fees set by APU.
 - The online application is deemed inadmissible and is not screened.Further information regarding the refund policy for the application fee can be found on our admission website (https://admissions.apu.ac.jp/graduate/how_to_apply/refund_policy).
5. The application fee cannot be waived.

Credit Card

Fee Amount: **5,500 JPY** for overseas applicants (5,000 JPY for evaluation and 500 JPY for administrative purposes)
36,500 JPY for domestic and internal applicants (35,000 JPY for evaluation and 1,500 JPY for administrative purposes)

Payment Method: You will be able to pay the application fee within the online application system. After completing the payment and submitting the online application, the application will be considered complete.



Bank Transfer (only for applicants who cannot pay by credit card)

Note: Bank transfer fees vary from bank to bank. All bank transfer fees must be covered by the payer.

Fee Amount: **7,000 JPY** for overseas applicants (5,000 JPY for evaluation and 2,000 JPY for administrative purposes)
35,000 JPY for domestic and internal applicants

Payment Purpose: Application fee

Contact Details: Applicant's Name, Phone Number

Bank Name: Sumitomo Mitsui Banking Corporation Oita Branch

Branch Address: 1-3-22 Chuo-machi, Oita-city, Oita-prefecture, 870-0035 JAPAN
Tel: +81 97-532-5161

Account Number: 1001673 (ordinary deposit account)

Account Name: RITSUMEIKAN ASIA PACIFIC UNIVERSITY

Swift Code: SMBCJPJT

IBAN CODE (if necessary): JP28 SMBC 0721 XXX2 4029 0868

Bank Transfer Fee: Borne by the remitter

If the application fee is paid in Japan, even if it is paid by a friend or relative in Japan, please write the applicant's name and phone number in the contact details when the payment is made. After completing the payment, please upload a digital copy of the payment receipt within your Application Status Page.

4 ONLINE ASSESSMENT

The online assessment is composed of a recorded video interview, the Core Abilities Assessment test, and the Watson-Glaser Critical Thinking Appraisal III test. The entire online assessment will last approximately 70 – 80 minutes.

Instructions for completing the online video interview and the online assessment will be made available within the online application system **after** you have submitted your application information, uploaded the necessary documents, and paid the application fee. Therefore, please be sure to complete these steps with enough time left to complete the online assessment before the application deadline.

Video Interview (20 – 30 minutes)

For the video interview, you will not be speaking with a person. Instead, through a video interview platform you will see a number of questions on your screen, and you will record your answers to them. Each question will have a set time limit for responding.

Core Abilities Assessment (20 minutes)

The Core Abilities Assessment (CORE) consists of verbal, numerical, and abstract reasoning items and measures an individual's capacity to learn concepts and tasks, apply sound reasoning, and draw conclusions from information.

Core Abilities Assessment Sample Questions:

https://downloads.pearsonassessments.com/images/assets/caa/example_questions_coreabilities.pdf

Watson-Glaser III Critical Thinking Appraisal (30 minutes)

The Watson-Glaser III Critical Thinking Appraisal (WGIII) measures a person's ability to identify and analyze problems, as well as seek and evaluate relevant information to reach an appropriate and logical conclusion. The assessment reports on three aspects of verbal critical reasoning, specifically the ability to 1) recognize assumptions, 2) evaluate arguments, and 3) draw conclusions, as well as providing an overall measure of critical thinking proficiency.

Further Information about Critical Thinking:

https://admissions.apu.ac.jp/resource/load/documents/Tips_on_Critical_Thinking.pdf

Practice Critical Thinking (Watson Glaser) Test:

https://r.apu.jp/WG_Trial

IMPORTANT

In some cases, an additional interview may be required. In this case, the date of interviews will be designated by APU and notified to applicants. Interviews will be held online. It is not necessary for applicants to travel to Japan for the interview.

You must have Safe Exam Browser (SEB) installed on your computer in order to take the CORE test and the WGIII test. This is for fraud prevention purposes.

You can view the system requirements and technical details for SEB on their website (https://safeexambrowser.org/about_overview_en.html). You will be able to access the Online Assessment Guidelines from the following link.

<http://r.apu.jp/SEB2024GR>

5 APPLICATION SUBMISSION

Your application will not be considered complete until you complete the following:

1. Submit the online application and pay the application fee (including uploads of the digital copies of all required application documents)
2. Submit your online assessment (including the online recorded interview and assessment tests)

Applicants who are accepted to APU will be required to send certified copies of uploaded application documents to APU's Office of International Admissions by post as part of the enrollment procedures. Please refer to page 29 for more details.

6 EVALUATION METHOD

All applicants are evaluated based on the information provided in their application documents, the video interview, and online assessment tests. If deemed necessary, the Office of International Admissions may also carry out the following:

- Contact the applicant's place of study or the person who wrote the Letter of Recommendation.
- Ask the applicant for an explanation regarding their original submitted documents.
- Require the applicant to submit additional documents relating to academic background, transcripts, and/or language proficiency.

Please note:

Depending on the future situation of the novel coronavirus (COVID-19), the evaluation method noted in this application handbook may be changed.

7 ADDITIONAL REQUESTS FROM APU

After your application is received, we may need to contact you for further information, so please check your email regularly after you have submitted your application.

Please also make sure that APU emails are not directed to your spam box.

8 ADMISSIONS SUPPORT FOR PROSPECTIVE APPLICANTS WITH MEDICAL CONDITIONS OR DISABILITIES

In accordance with the “Ritsumeikan Asia Pacific University Guidelines on Support Services for Students with Disabilities” (refer to page 33), APU offers special support during the admissions process to prospective applicants with disabilities or other medical conditions when necessary. For those who would like to request this support, read the following information carefully and submit the necessary documents.

For prospective applicants with disabilities or other medical conditions who would like to request support during the admissions process, submit the Admissions Support Request Form provided by APU **before applying for admission**. If possible, also submit a medical certificate or patient referral document issued by a physician.

Step 1

Making the Request

Before applying, you may confirm details via the Inquiry Form URL or QR code listed on the back cover **at least four weeks** prior to the deadline of your intended application period.



Step 2

Receiving the Support Request Arrival Receipt

APU will send an email upon receiving the support request documents from the applicant. Upload a copy of the email to the Other Required Documents page in the Online Application System.



Step 3

Notification of Support Request Results

APU will send the Support Request Results in an email within three weeks after sending out the Support Request Arrival Receipt.

9 INFORMATION ON LOCAL MEDICAL SERVICES

The following describes medical information in Japan, as well as the availability of medical care in and around our university. By providing this information, we hope to ensure a smooth transition for our students to Japan's and APU's medical system. If you have any questions, please contact the Office of International Admissions.

1. APU Health Clinic

The APU Health Clinic is not a full-service medical institution and therefore cannot perform medical procedures such as prescribing medication or giving injections and infusions (IV). Students who will require medical care or treatment will need to use off-campus medical institutions.

2. Applicants Currently Receiving Medical Treatment

For those currently receiving medical treatment, please consult with a physician about whether or not continued treatment will be necessary after enrolling. If you wish to continue treatment at a medical institution in Japan after enrollment, please be sure to submit a treatment plan or a patient referral document*¹.

*¹The patient referral document (which must include the name of the condition, symptoms, test results, and course of treatment/ treatment plan) must be written in English or Japanese.

3. Restrictions on Bringing Medication into Japan

There are heavy restrictions on bringing medication into Japan from abroad. Prospective applicants must check with their local Japanese embassy or the Japanese Ministry of Health, Labour, and Welfare regarding whether or not it will be possible to bring their currently prescribed medicine² into Japan. Before coming to Japan, please make sure to complete the legal procedures to bring medication into Japan.

For further information, please refer to the following page on the Ministry of Health, Labour, and Welfare's website:

English: <https://www.mhlw.go.jp/english/policy/health-medical/pharmaceuticals/01.html>

Japanese: https://www.mhlw.go.jp/stf/seisakunitsuite/bunya/kenkou_iryuu/iyakuhin/kojinyunyu/topics/tp010401-1.html

*² Injectable medicine that cannot be self-administered must be administered at a medical institution under the supervision of a doctor. However, depending on the facilities of the medical institution, there is a possibility that you will be unable to have the medicine administered. Please also be aware that the APU Health Clinic will be unable to administer injections.

4. Psychiatric Disorders/Disabilities (Mental illnesses, developmental disorders, sleeping disorders, etc.)

There are no medical institutions near APU which can treat psychiatric disorders or disabilities **in languages other than Japanese**. As mentioned above, there are many restrictions for bringing medication into Japan. For individuals currently receiving psychiatric treatment and who will require treatment after coming to Japan, please consult with your primary care provider and then with the university **before deciding to enroll**.

5. Accessibility

Wheelchair-accessible public transportation within Beppu City is limited. There are currently only a few wheelchair-accessible buses available on the routes used to commute to APU. Accordingly, it is difficult to commute to APU by bus. Students must also contact the bus company in advance to use a wheelchair-accessible bus. It is advisable for wheelchair users considering APU to inquire with the university about accessibility accommodations before applying.

6. Additional Support

Please contact the Office of International Admissions if you will require further assistance in your daily life at APU. This will be confidential and will have no bearing on your application's evaluation. You may also contact us after being accepted to APU.

Please note:

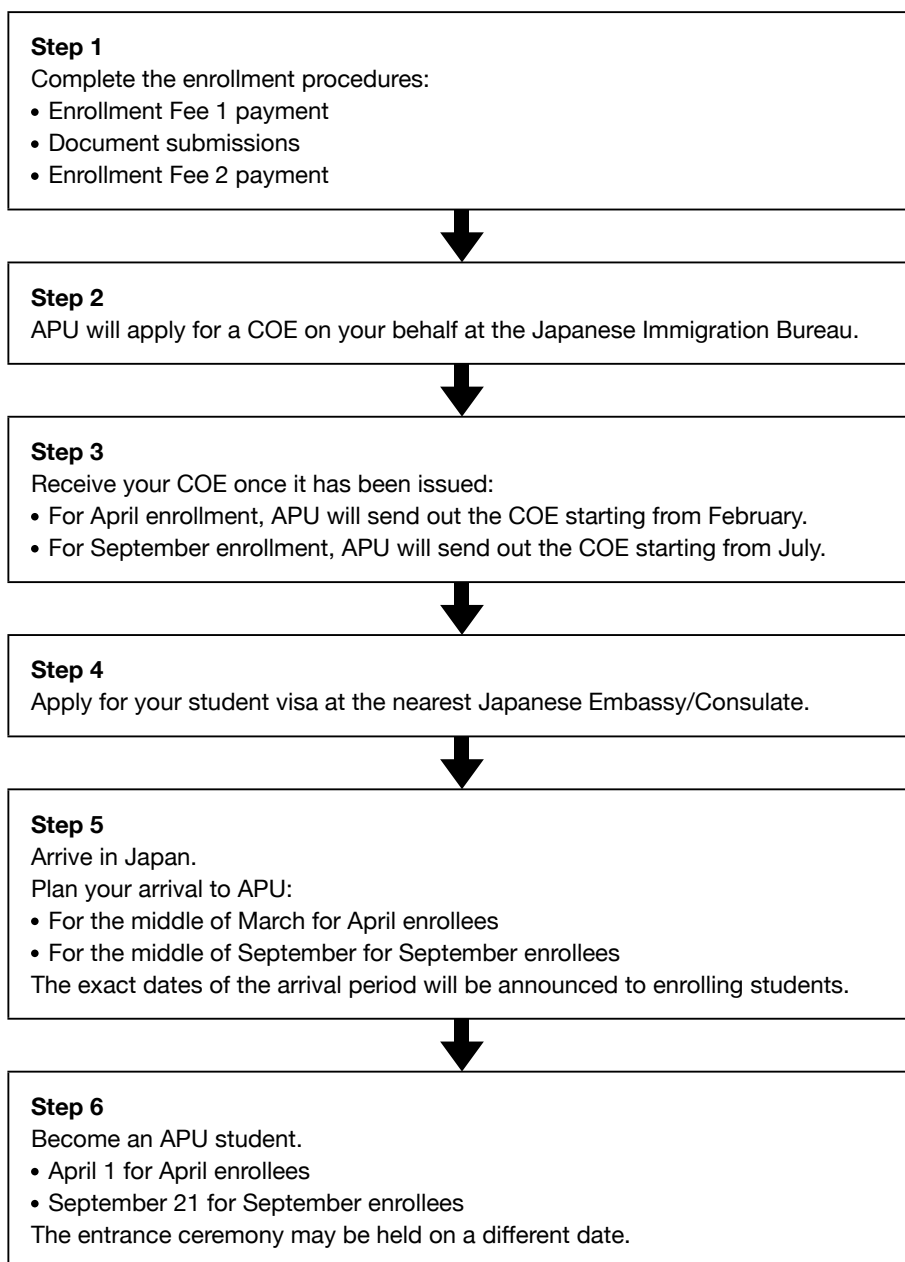
There have been situations in which students were unable to continue receiving prescriptions for the same medicine, or were unable to continue administering self-injections, in Japan. We strongly advise that you make your enrollment decision after consultation with your primary care provider and careful consideration of your medical situation and the circumstances in Japan.

If you have any questions, or if you would like to consult with the university, please visit (<http://r.apu.jp/grad>).

FROM ACCEPTANCE TO ENROLLMENT

1 ENROLLMENT PROCESS OVERVIEW

Admitted applicants who wish to enroll at APU must pay all required enrollment procedure payments and submit all required documents within the specified deadlines. For more details, please refer to the Enrollment Procedure Handbook that can be accessed on the APU Online Enrollment Procedures System. **Please note that the required enrollment payments and documents will not be accepted beyond the specified deadline.**



2 SUBMITTING REQUIRED APPLICATION DOCUMENTS

Enrolling students must submit certified copies of uploaded application documents to APU by post. (All accompanying translations must be the original versions.) Original documents will also be accepted, but all submitted documents will not be returned. Submit certified documents for original documents that cannot be reissued.

Original Documents to be Submitted After Acceptance

- **Academic Transcripts** Certified document*
- **Certificate of Graduation or Certificate of Scheduled Graduation** (if submitted with your application) Certified document*
- **The TOEIC® L&R Test result** (if you submitted during the online application). Certified document*
- **Certificate of Employment** Certified document*. Required only for MBA applicants.
- **Translation Documents** Original only

English translations are required for documents written in languages other than English. Please submit an official translation that includes the translator's name, address, contact details, and signature or official seal. APU will only accept translations created by the original document's issuing institution, a translation company, or a licensed translator. Translations alone will not be accepted. Please make sure to submit the original document with the translation.

Important:

1. There may be cases where APU asks you to submit a certified document or the original version of documents other than those listed above.
2. **APU will not return any of the submitted documents, regardless of the certificate type.** Please submit certified documents* for the original documents that cannot be reissued. Please note that submitted certificates will be discarded under APU's Document Preservation Regulation.
3. **Your acceptance to APU will be revoked if the original or certified documents submitted after acceptance differ from those uploaded with the online application, or if any false information or forgeries are found within the submitted documents even if evidence of such acts is found during or after enrollment.**

*A **certified document** is one that has been marked as being equivalent to the original with a stamp or seal by the issuing institution (preferred) or a notary public. Detailed information regarding how to get a document certified can be found on the admissions website (https://admissions.apu.ac.jp/graduate/material_download/).

3 DEADLINES FOR ENROLLMENT PROCEDURES

Confirm the payment and document submission deadlines below with the deadlines that appear on the Invoice for Required Enrollment Fees and Procedures sent together with your final results. All documents must arrive by the deadline specified below.

April 2024 Enrollment

No.	Result Notification	Enrollment Fee 1 Payment Deadline	Document Submission Deadline	Enrollment Fee 2 Payment Deadline
1	Nov 8, 2023 (Wed)	Dec 7, 2023 (Thu)	Dec 14, 2023 (Thu)	Jan 11, 2024 (Thu)
2	Dec 6, 2023 (Wed)	Jan 11, 2024 (Thu)		Jan 18, 2024 (Thu)
3	Feb 7, 2024 (Wed)	Feb 22, 2024 (Thu)		Mar 7, 2024 (Thu)

September 2024 Enrollment

No.	Result Notification	Enrollment Fee 1 Payment Deadline	Document Submission Deadline	Enrollment Fee 2 Payment Deadline
1	Nov 8, 2023 (Wed)	Dec 7, 2023 (Thu)	May 9, 2024 (Thu)	May 23, 2024 (Thu)
4	Jan 31, 2024 (Wed)	Privately Funded: Feb 29, 2024 (Thu) MEXT, AfDB, ADB candidates: Jul 4, 2024 (Thu)	Privately Funded: May 9, 2024 (Thu) MEXT, AfDB, ADB candidates: Jul 4, 2024 (Thu)	Privately Funded: May 23, 2024 (Thu) MEXT, AfDB, ADB candidates: Jul 11, 2024 (Thu)
5	Mar 6, 2024 (Wed)	Privately Funded: Apr 4, 2024 (Thu) AfDB, ADB candidates: Jul 4, 2024 (Thu)	Privately Funded: June 20, 2024 (Thu) AfDB, ADB candidates: Jul 4, 2024 (Thu)	Privately Funded: July 4, 2024 (Thu) AfDB, ADB candidates: Jul 11, 2024 (Thu)
6	May 29, 2024 (Wed)	Jun 27, 2024 (Thu)	Jun 20, 2024 (Thu)	Jul 4, 2024 (Thu)
7	Jul 10, 2024 (Wed)	Aug 1, 2024 (Thu)		Aug 15, 2024 (Thu)

4 DOCUMENT SUBMISSION

Please send all enrollment documents directly to APU by registered airmail or express mail service (DHL, FedEx, OCS, EMS, etc.). Submitted documents must reach APU no later than deadline for document submission indicated above. APU will not bear responsibility for any loss of documents in the course of delivery.

Address: **Ritsumeikan Asia Pacific University**
Office of International Admissions
1-1 Jumonjibaru, Beppu, Oita, 874-8577 Japan
Tel: +81 977-78-1119

5 ENROLLMENT PROCEDURE FEES

You must pay the fees listed below in order to complete your enrollment procedures. Please ensure that you have sufficient financial means before applying. Admitted applicants can view the invoice for the enrollment procedure fees in the APU Online Enrollment Procedure System. You must pay the fees stated in the invoice by the payment deadline to enroll. Your acceptance will be revoked if any deadlines are missed. The admissions fee and AP House moving-in fee are non-refundable.

We recommend using Convera, an online international payment service, to complete your Enrollment Fee 1 and 2 payments. If you pay by bank transfer instead, an additional handling fee of 10,000 JPY will be incurred. Further details can be found in the Enrollment Procedures Handbook provided after acceptance.

Enrollment procedure fees for admitted applicants with external scholarships may differ from below. Please contact the Office of International Admissions for details. The amounts listed below may be subject to change.

Enrollment Fee 1

Admission Fee

200,000 JPY

The Admission Fee will not be refunded under any circumstances. Internal applicants, APU graduates, and Ritsumeikan University graduates are not required to pay the Admission Fee.

Enrollment Fee 2

1. Tuition Fee

You must pay the entire first semester's tuition before enrolling at APU.

GSA Master's/Doctoral Program **650,000 JPY**

GSM Master's Program **900,000 JPY**

If you applied for the APU Tuition Reduction Scholarship, the tuition fee varies according to the awarded APU Tuition Reduction Scholarship percentage.

APU Tuition Reduction Scholarship Percentage	0%	30%	50%	65%	80%	100%
GSA Master's/Doctoral Program	650,000 JPY	455,000 JPY	325,000 JPY	227,500 JPY	130,000 JPY	0 JPY
GSM Master's Program	900,000 JPY	630,000 JPY	450,000 JPY	315,000 JPY	180,000 JPY	0 JPY

2. AP House Entrance Fee

All graduate students are guaranteed to a room in one of APU's student housing facilities, AP House 3 or AP House 4, which helps them adapt to their new life in Japan and concentrate on their studies. All rooms are equipped with basic facilities, including internet access.

When applying to the university, you will need to select which dormitory you prefer.

Both housings are located off campus. More information is available on the APU Admissions website: admissions.apu.ac.jp/graduate/student_life/housing

AP House 3 Entrance Fee Breakdown

Plan	April	September
Moving In Fee*1	33,000 JPY	33,000 JPY
Security Deposit*2	66,000 JPY	66,000 JPY
Rent*3	66,000 JPY	49,500 JPY
Total	165,000 JPY	148,500 JPY

AP House 4 Entrance Fee Breakdown

Semester of Enrollment	April	September
Moving In Fee*1	33,000 JPY	33,000 JPY
Security Deposit*2	98,000 JPY	98,000 JPY
Rent*3	98,000 JPY	73,500 JPY
Total	229,000 JPY	204,500 JPY

*1 The moving in fee is not refundable under any circumstances.

*2 The security deposit serves as a guarantee. In the event that you fail to pay rent, or if any damage is done to the room during your period of stay, charges will be deducted from the security deposit and the remaining amount will be returned to you upon moving out.

*3 April enrollees are required to pay two months of rent in advance (April and May), while September enrollees are required to pay one and half months of rent in advance (from mid-September and October). The rent for AP House 3 is 33,000 JPY/month and AP House 4 is 49,000 JPY/month.

3. Comprehensive Insurance for Students

Master's Program	9,250 JPY
IMAT Program.....	5,120 JPY
Doctoral Program	13,400 JPY

All international students must join the insurance program designated by APU. Refer to the Guide to Comprehensive Insurance for Students Lives Coupled with “Gakkensai” which can be accessed on the APU Online Enrollment Procedures System for admitted applicants.

4. IMAT Program Fee

In addition to tuition, IMAT students must pay a program fee of **100,000 JPY**.

6 FINAL PRE-ENROLLMENT PROCEDURES

Certificate of Eligibility (COE) and Student Visa

In order to obtain a student visa for studying in Japan, you will need a Certificate of Eligibility (COE) issued by the Japanese Immigration Bureau.

STEP 1: Request APU to apply for your COE

APU will apply for the COE on your behalf as long as you meet all the criteria below.

1. You have requested only APU to apply for the COE on your behalf.
2. You have paid all the necessary enrollment procedure fees by the stipulated deadlines.
3. You are able to prove that you possess sufficient financial means for the entire period of study and have submitted all the required documents.
4. APU considers it appropriate to apply for a COE on your behalf.

Once APU is able to confirm payment of necessary fees and your intent to enroll at our university, and you agree to the conditions above, APU will proceed to apply for the COE on your behalf.

STEP 2: Use your COE to apply for your student visa

After the COE is issued, APU will send the COE to you by post. You must use your COE to apply for a student visa at a Japanese embassy or consulate in your country or region, **before coming to Japan**.

Renewal or Change in Status of Residence (for those who already possess a visa in Japan)

Please consult with the Immigration Bureau regarding changing/renewing your status of residence and also with your local municipal authority (city hall) regarding any necessary renewals/changes to registrations (such as moving-out/moving-in notifications). Once you have confirmed the correct procedures, please complete these procedures on your own.

Ritsumeikan Asia Pacific University Guidelines on Support Services for Students with Disabilities

Ritsumeikan Asia Pacific University (hereinafter referred to as “APU”) will provide support based on the following guidelines to students with physical, developmental, psychological, and other psychosomatic disabilities (hereinafter referred to as “disabled students”).

However, these guidelines serve to establish the university’s support service standards and core foundation. Support provisions will be finalized through thorough discussion between the disabled student and the relevant parties after reviewing reasonable accommodation for the individual student in line with the student’s disability and the university’s support system.

1. Core Support Principles

All APU faculty and staff will support the process of enabling disabled students who request support, to have access to the appropriate support needed in order to use their learning experiences at our university to grow and fully connect with society. APU expects that all enrolled students and relevant parties understand these guidelines and will work together to realize our objectives.

2. Basic Policies

- 1) APU faculty and staff will provide support to disabled students, in a way that will avoid making distinctions between students without disabilities, so that they are able to lead fulfilling student lives with a mutual appreciation and respect for human character and individuality.
- 2) Initiatives implemented as support for disabled students will aim to contribute to the overall growth and learning of all students.
- 3) In principle, support provisions for disabled students will be implemented based on a request for support by the disabled student.
- 4) In the case of difficult decisions concerning support provisions, APU will refer to the principle of reasonable accommodation in the Basic Act for Disabled Persons, as well as the standards and treatment set out in MEXT’s Investigative Report on Learning Support for Students with Disabilities (Preliminary Summary). Both the disabled student’s own individual situation and the university’s environment will be taken into consideration in these decisions.

3. Support Objectives

The primary objective of APU support for disabled students is to ensure that disabled students’ right to an education and learning is not abused because of their disability. At the same time, it is our hope that the provision of appropriate learning support when necessary, in addition to other varieties of support activities, will result in the cultivation of improved personal relationships and will provide opportunities for support persons to better their understanding of disabilities.

4. Support Framework

Individuals involved in support for disabled students will consist of APU faculty and staff in addition to enrolled students. We will cooperate closely with an external specialist on support for disabled persons. A “Consultation Desk for Students with Disabilities” will be set up in the Student Office in order to provide university-wide support to disabled students. Support Coordinators for Students with Disabilities will be placed in the Student Office, Academic Office, Admissions Office, and Career Office. Information concerning the placement of Student Coordinators in these offices will be made public to the student body. Students will not only have the option of the Consultation Desk available to them, but will also be able to directly consult with Support Coordinators. Staff at the Consultation Desk for Students with Disabilities will connect disabled students who come in for consultation with the appropriate Support Coordinator in the above offices according to the nature of the issue. Support Coordinators will be in charge of making the necessary learning support adjustments for disabled students, in addition to monitoring collaborative support efforts between support staff and the relevant departments to ensure that they are appropriately carried out.

5. Protection of Personal Information and Confidentiality

- 1) Support persons who possess knowledge of a disabled student’s personal information (this includes information concerning the disability and consultation records) as a result of their support activities must strictly manage the information in their possession, and obtain consent directly from the student in the case that it is necessary to submit or disclose this information to a third party.
- 2) Support persons may share personal information concerning the disabled student while respecting the boundaries of collective confidentiality in cases where APU determines collaborative support provisions to be necessary.

6. Disclosure of Information

Mediums such as APU website, etc., will be used to spread information on university support policies for disabled students, the support system, consultation process, and support provisions. APU will notify students and prospective applicants via appropriate means as seen fit.

7. The Student Office will be in charge of all administrative matters concerning these guidelines.

8. The President of the university will make the final decision with regards to revision or abolition of these guidelines after deliberation by the Student Affairs Committee and Academic Affairs Committee.

For more information regarding the support services available to students at APU, please visit <https://en.apu.ac.jp/home/life/content39/>

Policy Statement on Sexual and Gender Diversity

APU respects sexual and gender diversity as part of its commitment to human rights. APU aims to create an environment in which people of any sexual orientation and gender identity are able to study and live with the security of knowing that their human rights are fully protected, that they will be treated fairly, and that they need not suffer any discomfort or pain as a consequence of their sexual orientation or gender identity.

For more information regarding Policies and Resources Regarding Sexual and Gender Diversity at APU, please visit (<http://en.apu.ac.jp/home/life/content57/>).



CONTACT US

Ritsumeikan Asia Pacific University
Office of International Admissions
1-1 Jumonjibaru, Beppu, Oita, 874-8577 Japan

Contact us via our Inquiry Form:
admissions.apu.ac.jp/graduate/contact_us

Tel: +81-977-78-1119

-  Ritsumeikan.APU
-  APUAdmissionsOffice
-  ritsumeikanapu
-  Ritsumeikan Asia Pacific University
-  ritsumeikanapu



APU OVERSEAS OFFICES

CHINA

Ritsumeikan Liaison Office –
Shanghai Jiao Tong University D, 18F Shentong Xinxu
Guangchang, No. 55, Huaihai West Rd.
Shanghai City 200030 China
Tel: +86-21-6283-5104
Email: apuchina@apu.ac.jp

INDONESIA

APU Indonesia Information Center
C/O MARQUEE, Mayapada Tower I, 11th Floor, Jl.Jend.
Sudirman Kav. 28 Jakarta 12920 Indonesia
Tel: +62-21-5289-7328/7392
Email: apu-ina@apu.ac.jp

KOREA

APU Korea Office
#608, Halla Classic Officetel 6th Floor, 23 Gangnam Daero
84 Gil, Gangnam-gu, Seoul 06233 Korea
Tel: +82-2-564-3425/3426
Email: hello@ritsapu-kr.com

TAIWAN

APU Taiwan Office
8F., No.560, Sec.4, Zhongxiao E. Rd.,
Xinyi Dist., Taipei City 110, Taiwan
Tel: +886-2-7718-8685
Email: taipei@apu.ac.jp

THAILAND

APU Thailand Office
Room 1015, 10th Floor, Serm-Mit Tower 159/16 Soi Asoke,
Sukhumvit 21 Road Wattana, Bangkok 10110 Thailand
Tel/Fax: +66-2-665-7145
Email: thailand@apu.ac.jp

VIET NAM

APU Viet Nam Office
145A Phao Dai Lang Street,
Dong Da Ward, Hanoi, Viet Nam
Tel: +84-24-3203-2063
Hotline: +84-981-32-6432
Email: vietnam@apu.ac.jp

APU OVERSEAS REPRESENTATIVES

HONG KONG AND MACAU

Mr. Daniel Smiley
Tel: +852-6858-5902
Email: smileyd@apu.ac.jp

INDIA (NORTH AND EAST)

Ms. Deepti Singh Ritsumeikan APU Delhi Office
18A103 WeWork, Berger Delhi One Floor 19, Sector 16B,
Noida Uttar Pradesh 201301, India
Tel: +91-73037-86004
Email: d-india@apu.ac.jp

INDIA (CENTRAL, WEST, AND SOUTH)

Ms. Ishana Malkani & Mr. Deeptanshu
Work Loft, Court Chambers, 35 New Marine Lines,
Mumbai, India 400020
Tel: +91-98-2187-4565, +91-79-0363-4641
Email: m-india@apu.ac.jp

MALAYSIA

Ms. Sookfan Ho
Tel: +6012-219-3312
Email: sookfan@apu.ac.jp

Mr. Alex Long
Tel: +60-111-068-0111
Email: alexlong@apu.ac.jp

SRI LANKA

Dr. Harin Gunawardena
183/1, Nawala Road, Nugegoda, Sri Lanka
Tel: +94-714251314

NOT FOR SALE

Printed in June 2023 GRAD-E01

