

Shape your world



Institute for Applied
Material Flow Management

Ritsumeikan
Asia Pacific University



IMAT

DUAL DEGREE PROGRAM

RITSUMEIKAN
ASIA PACIFIC UNIVERSITY

INTERNATIONAL MATERIAL FLOW MANAGEMENT

ONE YEAR IN JAPAN, ONE YEAR IN GERMANY

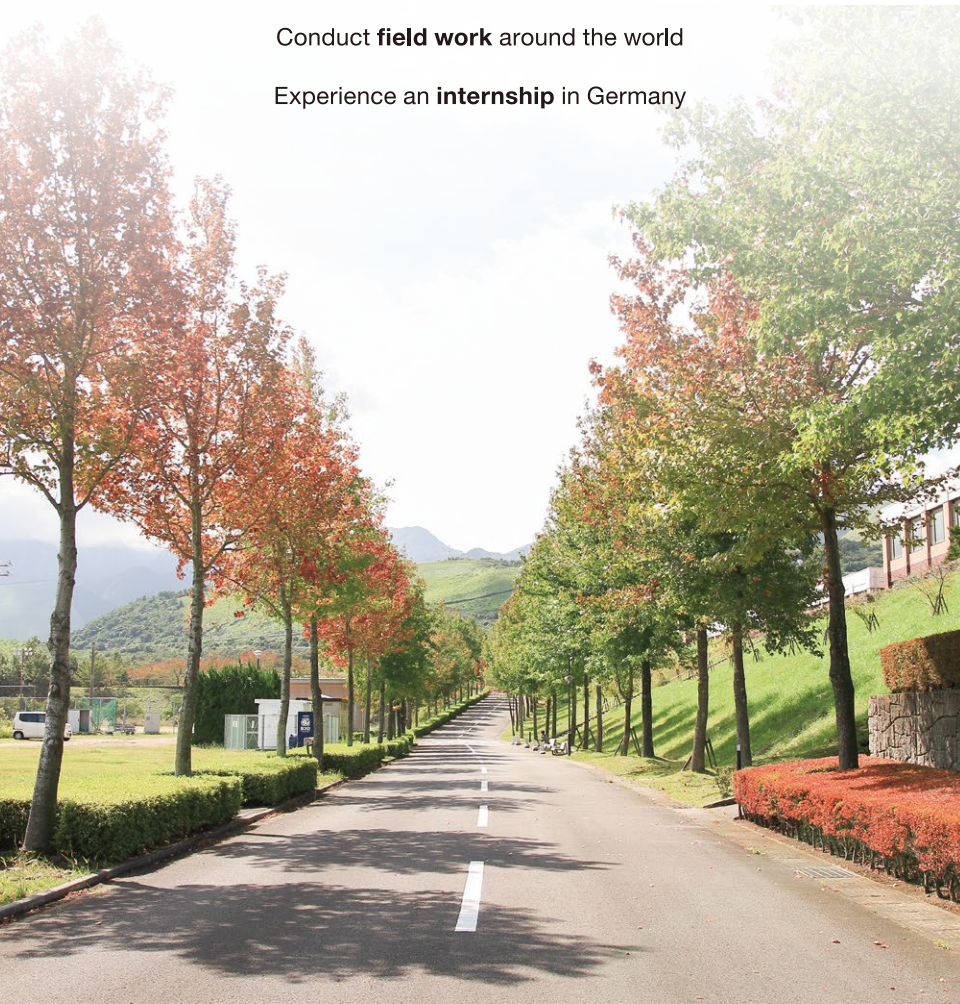
Become a professional in **zero emission systems design**

Experience a **unique, multidisciplinary, and international** education

Gain insight into Japanese and German **business and cultural environments**

Conduct **field work** around the world

Experience an **internship** in Germany



DUAL MASTER'S DEGREE

IMAT is a dual-degree program managed jointly by APU and the Institute of Applied Material Flow Management (IfaS), an innovative research institute of the Trier University of Applied Sciences located in Germany.

The program, conducted entirely in English, offers integrated knowledge in engineering, economics, and law, as well as in the natural and social sciences.

Upon completion of the program, students receive two master's degrees:

- Master of Science in International Cooperation Policy from APU
- Master of Engineering in International Material Flow Management from Trier University of Applied Sciences



HOW MUCH DOES IT COST TO STUDY IN THE IMAT PROGRAM?

Admission fee (one-time deposit)

130,000 JPY (1,130 USD*)

Annual tuition

1,400,000 JPY (12,174 USD*)

Annual IMAT program fee

200,000 JPY (1,739 USD*)

Living costs and other fees

Approx. 1,000,000 JPY (8,696 USD*) per year

This includes 49,000 JPY per month for housing, additional fees, and a typical amount spent on living costs such as food, books, transportation, etc.

*The fees above are based on the 2019 academic year and are subject to change. US dollar equivalents are for reference only, based on the exchange rate of \$1 = 115 Japanese yen. All fees must be paid in Japanese yen. See our website for a detailed breakdown of fees.

APU TUITION REDUCTION SCHOLARSHIP

30%, 50%, 65%, 80%, or 100%

Valid for the full two years of study

All applicants eligible to apply

LOCATION

APU is located in Beppu, **Japan**, a bayside city home to 120,000 people and over 2,000 natural hot springs.

Environmental Campus Birkenfeld (ECB), located on the southern edge of the Hunsrück mountain range, is the first zero-emission campus in **Germany**.

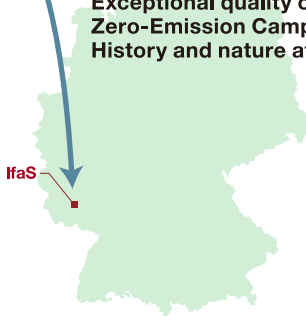
Why Beppu is a great place to study:

- Safe and affordable
- Stunning location
- Welcoming community



One-of-a-kind experience in Germany:

- Exceptional quality of living
- Zero-Emission Campus
- History and nature at your fingertips



IMAT VOICES

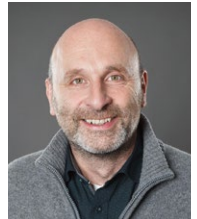
“IMAT provides chances to learn the latest concepts and theories of zero emissions and circular economy. This program also offers access to pioneering practical cases in Japan, Germany, and other parts of the world. Essential training in the program, focusing on flow and systematic analysis, prepares students for the evolving complex challenges in the transition to sustainability, starting them on the path to becoming green business experts.”

Xuepeng Qian, Ph.D. (China)
Associate Professor and IMAT Program Coordinator at APU



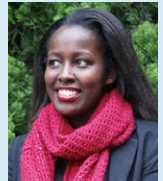
“IMAT is a future-oriented master’s program looking into innovative and international green growth strategies on an organizational and regional level. Our graduates have excellent job opportunities in this ever growing business segment.”

Peter Heck, Dr. (Germany)
Professor and IMAT Director at IfaS



“The IMAT program introduced me to the concepts of circular economy and material flow management through interdisciplinary lectures in business, energy, and policies. My most enlightening moment was the realization that waste, with proper attention and research, is a resource. Using what I gain through this program I plan to empower more people in the African continent through education on sustainable waste management and sustainable development.”

Faith Wachinga Kaibere (Kenya)
International Material Flow Management Student



“Due to the variety of lecturers from academic, governmental, and business backgrounds as well as the cross-cultural experiences that APU in Japan and IfaS in Germany offer, I have gained confidence in international cooperation, broadened my horizons, and nurtured my passion in this innovative and emerging field of study.”

Ulrike Kirschnick (Germany, Graduated in 2018)
Project Manager, IfaS (Trier University of Applied Sciences), Germany



GAIN A COMPETITIVE EDGE

MULTIDISCIPLINARY COURSES

First year: APU (Sustainability Science Division)

- Environment and Natural Resources Conservation
- Advanced Environmental Geosciences
- Environmental Policy, Law, and Administration
- Environmental Economics
- Urban Sustainability
- Industrial Ecology

Second year: Trier University of Applied Sciences

- Eco-System Management
- Zero Emission Strategy
- Engineering Science
- Sustainable Resource and System Change Management
- Business Planning
- Climate Change & GHG Abatement



GLOBAL CAREER OPPORTUNITIES

Alumni Pathways

- AUDI Mexico
- DNV GL, USA
- Deloitte Tohmatsu Consulting LLC, Japan
- Environmental Authority, Hawaii, USA
- 4Europe Consulting, Germany
- General Motors Powertrain, Uzbekistan
- Green Concept Consulting, Nigeria
- Juwi Renewable Energies Private Ltd., Singapore
- KOE Environmental Business, Japan
- Kitakyushu Eco City Foundation, Japan
- New Zealand Transport Agency
- saferay Pte. Ltd., Singapore
- Wujin Green Industry Park, China

HOW TO APPLY

September 2020 Enrollment

Overseas applicants:

August 1, 2019 (Thu) – April 14, 2020 (Tue)

Domestic/Internal applicants:

August 1, 2019 (Thu) – June 2, 2020 (Tue)

ELIGIBILITY REQUIREMENTS

1. Bachelor's degree or equivalent
2. English language proficiency test score

Minimum requirements:

TOEFL iBT [®] Test	80
TOEIC [®] L&R Test *	780
IELTS	6.0
PTE Academic	50
Cambridge English Language Assessment	FCE Grade B

* L&R is an abbreviation for LISTENING AND READING



APPLY ONLINE
<http://r.apu.jp/grad>



APU ADMISSIONS OFFICE

Ritsumeikan Asia Pacific University
1-1Jumonjibaru, Beppu, Oita 874-8577 Japan
Tel: +81-977-78-1119
<http://r.apu.jp/grad>
Email: apugrad@apu.ac.jp

Ritsumeikan.APU
 APUAdmissionsOffice
 ritsumeikanapu



IFAS ADMISSIONS OFFICE

Hochschule Trier - Umwelt –
Campus Birkenfeld Institute for
Applied Material Flow Management –
IfaS Campusallee 9926
55768 Neubrucke, Germany 1380
Tel: +49 6782 / 17-122
Email: ifas@umwelt-campus.de

Stoffstrommanagement
 ucblfa5

APU OVERSEAS OFFICES

CHINA

Ritsumeikan Liaison Office
Tel: +86-21-6283-5104
Email: apuchina@apu.ac.jp

KOREA

APU Korea Office
Tel: +82-2-564-3425/3426
<http://www.ritsapu-kr.com>
Email: hello@ritsapu-kr.com

TAIWAN

APU Taiwan Office
Tel: +886-2-2181-1666
Email: taipei@apu.ac.jp
 APUTW

INDONESIA

APU Indonesia Information Center
Tel: +62-21-5289-7328/7392
Email: apu-ina@apu.ac.jp
 apuindonesiaoffice

THAILAND

APU Thailand Office
Tel: +66-2-665-7145
Email: thailand@apu.ac.jp
 APUThailand

VIET NAM

APU Viet Nam Office
Hanoi Tel: +84-24-32-000-619
Ho Chi Minh City
Tel: +84-28-39-30-6432
<http://vietnam.apu.ac.jp>
Email: vietnam@apu.ac.jp
 apuvietnam

APU OVERSEAS REPRESENTATIVES

INDIA

Mr. Vishnu Vankayala
Tel: +91-44-4352-2078
Email: s-india@apu.ac.jp

SRI LANKA

Dr. Harin-Gunawardena
Tel: +94-714251314