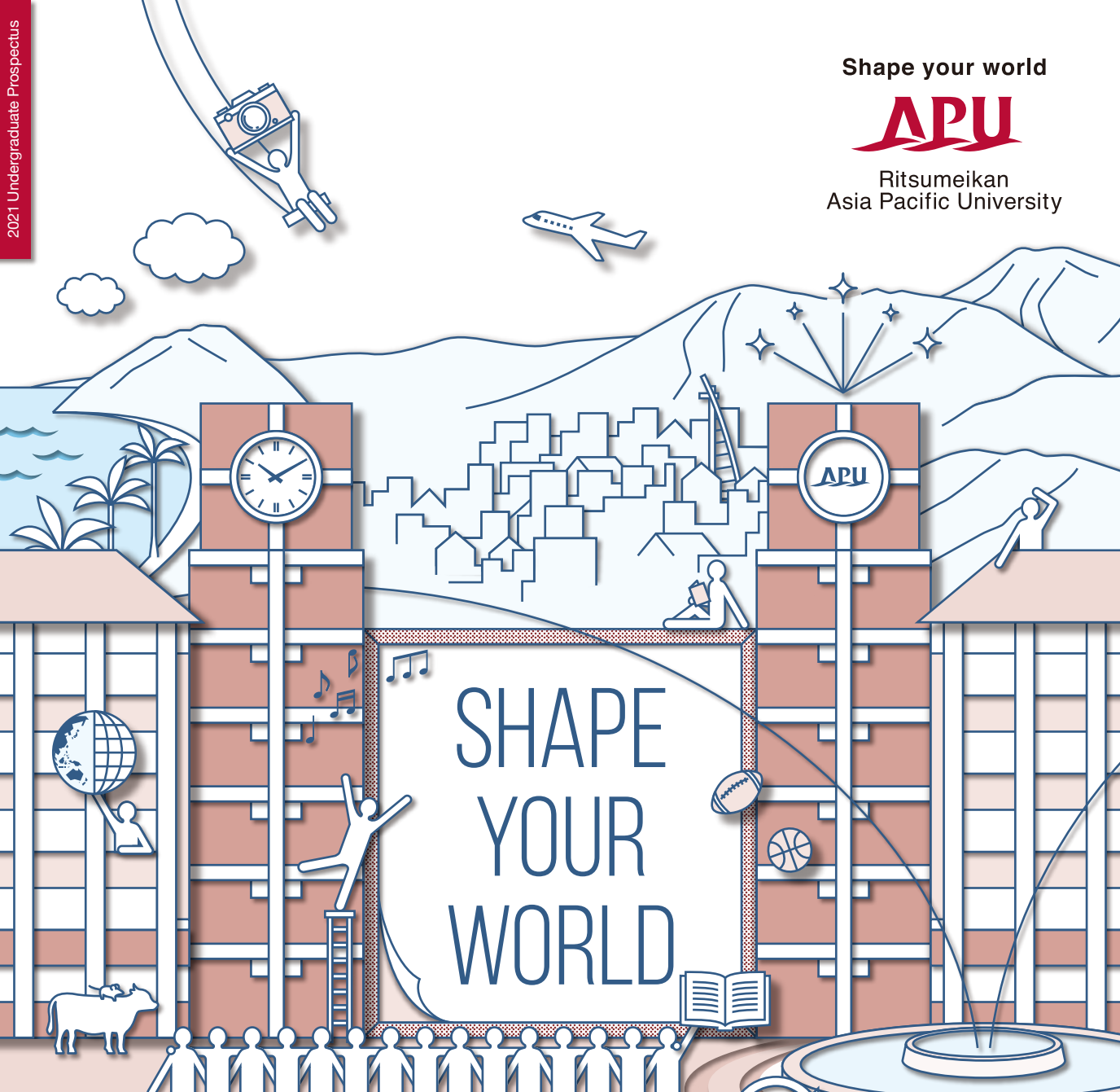


Shape your world

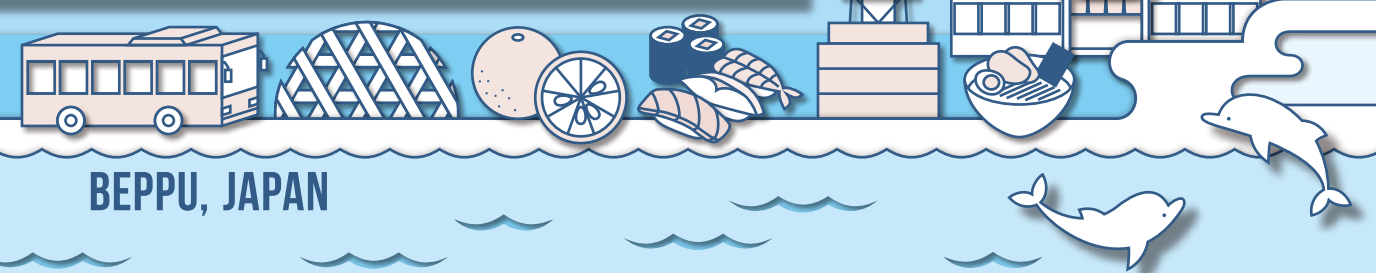


Ritsumeikan Asia Pacific University



SHAPE YOUR WORLD

RITSUMEIKAN ASIA PACIFIC UNIVERSITY 2021



BEPPU, JAPAN



An aerial photograph of the Ritsumeikan Asia Pacific University (APU) campus, showing various buildings, a baseball field, and parking lots, set against a backdrop of a city and a bay.

2	SHAPE YOUR WORLD
3	APU BY THE NUMBERS
5	ACADEMICS
7	COLLEGE OF INTERNATIONAL MANAGEMENT
9	COLLEGE OF ASIA PACIFIC STUDIES
11	SUBJECT LIST
13	EXCHANGE PROGRAMS
15	EXTRACURRICULAR ACTIVITIES
17	STUDENT LIFE
21	CAREERS
23	ALUMNI JOURNEYS
25	ADMISSIONS GUIDE

# SHAPE YOUR WORLD

FREEDOM, PEACE, HUMANITY.  
INTERNATIONAL MUTUAL UNDERSTANDING.  
THE FUTURE SHAPE OF THE ASIA PACIFIC REGION.

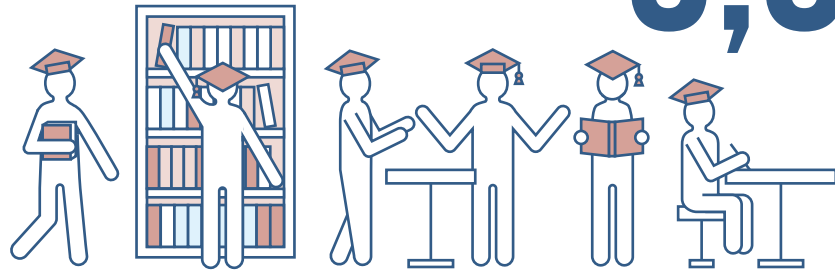
Ritsumeikan Asia Pacific University (APU) first opened its doors in 2000 with these ideals as its foundation. What emerged was an entirely new multicultural learning environment with the aim of creating global leaders across all fields and industries. In these past twenty years, this goal has not only been reached but exceeded as thousands of students from over one hundred fifty countries have come together to learn intercultural coexistence, responsible business leadership, and sustainable development. With this well-rounded base of global knowledge, APU students and graduates are actively finding solutions to the issues our world is facing.

**Your path to shape your own world and  
the world around you starts at APU.**



# APU BY THE NUMBERS

**5,648**  
Total students



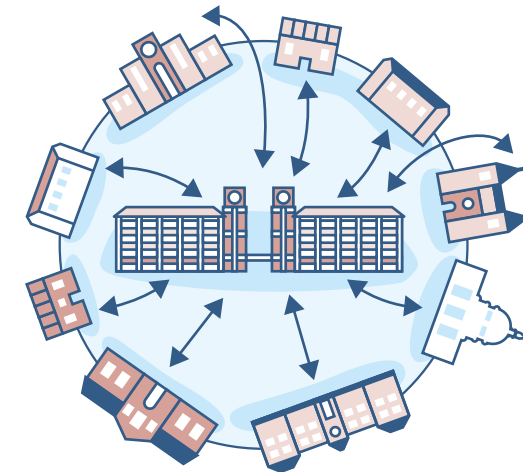
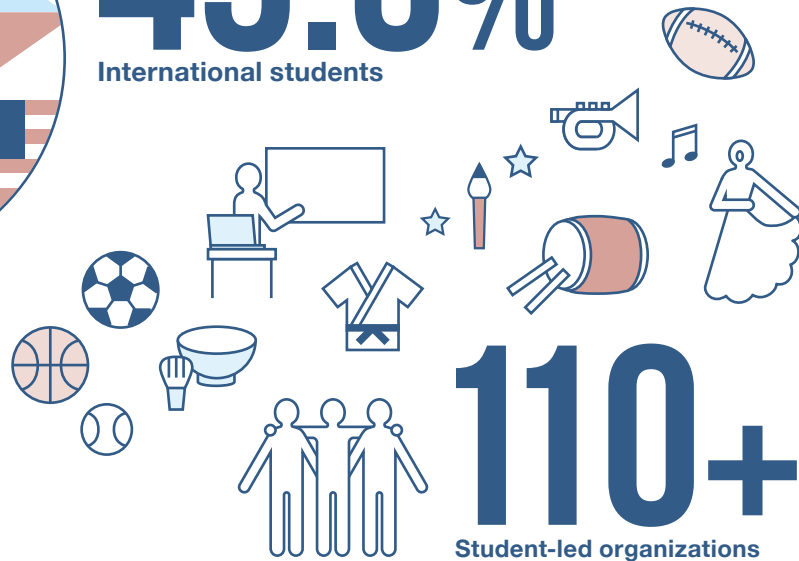
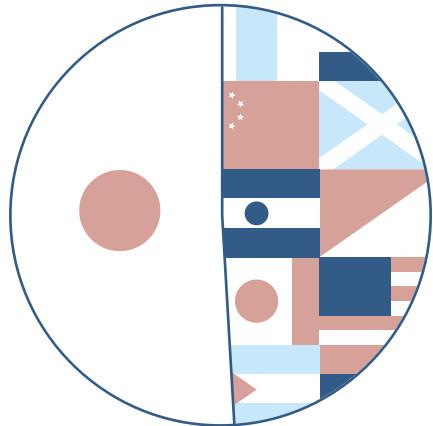
**92**  
Countries and regions represented by students

**22**  
Countries and regions represented by faculty

**152**  
Countries and regions represented by alumni

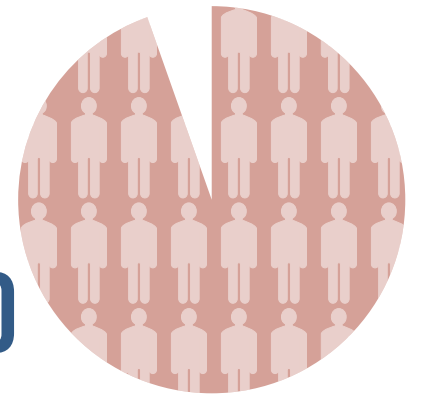


**49.5%**  
International students



**142** Exchange partners  
in **42** countries and regions

**96.2%**  
Employment success rate





# EDUCATION THAT INSPIRES YOU



## Drusila Bento Gomes (Angola)

APS, Third Year Student

I came to Japan with aspirations of self-discovery and growth. Ever since I was younger, I hoped to one day go far beyond the physical and intangible borders that limited my understanding of the world. APU provides me the platform to uncover new cultures, people, and customs among other aspects that make Japan and APU a unique place. I am able to cultivate myself both academically and on a personal level. The many meaningful relationships that I have developed during my time at APU are definitely ones I will carry with me even after I leave and have made my time here in Japan much more fulfilling.



## OUR PROGRAMS

COLLEGE	AREAS OF STUDY
<b>COLLEGE OF INTERNATIONAL MANAGEMENT (APM)</b> <i>Bachelor of Business Administration (BBA)</i>	<ul style="list-style-type: none"> <li>• Innovation and Economics</li> <li>• Marketing</li> <li>• Strategic Management and Organization</li> <li>• Accounting and Finance</li> </ul>
<b>COLLEGE OF ASIA PACIFIC STUDIES (APS)</b> <i>Bachelor of Social Science (BSocSc)</i>	<ul style="list-style-type: none"> <li>• Environment and Development</li> <li>• Hospitality and Tourism</li> <li>• International Relations and Peace Studies</li> <li>• Culture, Society and Media</li> </ul>

You need at least 124 academic credits in order to graduate. Average time until completion is four years. There are also options to graduate in three or three and a half years.

## ARE YOU READY TO MAKE A POSITIVE IMPACT ON A GLOBAL LEVEL?

### BEYOND THE TRADITIONAL CLASSROOM SETTING

Learning at APU is not simply a matter of reading books and attending lectures. APU's interactive style of education creates daily opportunities for lively discussions and group work with students of different cultural and socioeconomic backgrounds in a variety of classroom settings. We invite you to take your knowledge, turn it into action, and make an impact out in the world that exists beyond the classroom. From field studies, exchange programs, conferences, and academic competitions, to community outreach and internships, get involved in the vast range of opportunities that await you at APU.

### BECOME MULTILINGUAL

Knowing more than one language is not a goal for our students—it's a requirement. Studying your degree in English means you will also be required to learn Japanese and vice-versa. Want to add another language to your repertoire? APU offers additional language courses in the Asia Pacific languages of Chinese, Korean, Malay/Indonesian, Spanish, Thai, and Vietnamese. Acquire another language and you will have a significant advantage in your future career whether it is based in your home country, Japan, or another location.

### ENGAGE WITH DEDICATED FACULTY

Highly qualified faculty from twenty-two countries, many of whom have real-world experience, bring a new dimension of practical learning to the classroom. Learn about the latest issues affecting your world from esteemed practitioners who have honed their skills at the cutting edge of innovation over the decades.



# COLLEGE OF INTERNATIONAL MANAGEMENT [APM]

BACHELOR OF BUSINESS ADMINISTRATION (BBA)



Cultivate your own global perspectives, business ethics, and problem-solving skills in APM to join the next generation of international business leaders. As a student in APM, you will begin your studies tackling core management concepts and then branch out into your specialized field of interest.

The College of International Management is accredited by the Association to Advance Collegiate Schools of Business (AACSB International), which is widely regarded as the highest level of accreditation for business schools worldwide.

## AREAS OF STUDY

### INNOVATION AND ECONOMICS

Learn about what generates innovation, how production is managed, and the underlying economic foundations of these concepts. The lectures are geared towards those wishing to contribute to global development through business or policy-making.

### MARKETING

The theories and methods needed to successfully provide goods and services to the global market is the focus of courses in the marketing area of study. You will learn to identify the most effective method to link production to the final consumer and determine how much to provide at what cost.

### STRATEGIC MANAGEMENT AND ORGANIZATION

These classes focus on how to set goals, establish principles, and develop methods for an organization so that it meets the challenges of evolving social needs. If you aim to become an entrepreneur or plan to take over your family business, this area of study is ideal for you.

### ACCOUNTING AND FINANCE

The health of corporations is evaluated by the ebb and flow of money, which is known as accounting, while finance is the field concerned with raising and managing the funds necessary for corporate activities. Classes in this area of study enable you to gain a solid foundation in these demanding fields and exercise your knowledge in an international context.

## Professor Lailani Laynesa Alcantara (The Philippines)

Ph.D. (Management), University of Tsukuba

The APM curriculum is AACSB-accredited and designed for students to become globally competitive. APM students are equipped with the knowledge and skills critical to becoming a well-rounded professional and are nurtured with values that foster leadership and social responsibility.

In APM, you have access to a diverse group of faculty with distinguished professional and academic backgrounds, engaging and innovative classes, and a global network of individuals who are inspired and committed to making a positive impact in their fields of work and in society. You can achieve success in your academic pursuits and chosen business discipline while engaging in dialogues with creative leaders and global visionaries.





---

**Associate Professor Steven B. Rothman (United States)**

Ph.D. (Politics), University of Oregon

---

With a diverse student body and faculty expertise, everyone in the College of Asia Pacific Studies is both a teacher and a learner. Across our cultural differences, diverse languages, and areas of specialization, faculty and students communicate with openness and curiosity to expand one another's knowledge, skills, and life experiences. This depth of interaction creates a space of immeasurable cultural learning unavailable anywhere else.

Our educational programs reach out beyond the classroom into numerous extracurricular activities in Japan and abroad. Such activities include field study programs, study abroad programs, and student-run educational clubs. Graduating with an APS degree means you leave with a solid knowledge of your chosen field, the life skills for success, and a global group of friends and colleagues that last a lifetime.

---



# COLLEGE OF ASIA PACIFIC STUDIES [APS]



## BACHELOR OF SOCIAL SCIENCE (BSocSc)

In APS, we challenge you to tackle a vast array of global issues and develop new ways of thinking to face these obstacles head-on. You will gain a broad understanding of the political systems, economies, societies, and cultures of the Asia Pacific region while gathering relevant skills in language and information technology. APS prepares you for a wide variety of careers in the government, international organizations, media, the travel industry, and multinational corporations.

The Hospitality and Tourism area of study received the United Nations World Tourism Organization Tourism Education Quality Certification. This certification is granted to institutions that have high-quality tourism education, research, and training programs. APU is the second institution in Japan to receive the UNWTO TedQual Certification.

### AREAS OF STUDY



#### ENVIRONMENT AND DEVELOPMENT

Profit-driven development has brought with it a raft of environmental and other issues, and sustainable development is an urgent issue for our times. Lectures in this area of study tackle the question of sustainable development in relation to policies and efforts to balance environmental conservation and economic development.

#### HOSPITALITY AND TOURISM

As cultural exchange and promotion of regional industries through tourism are vital to the development of the Asia Pacific region, this area of study explores multiple facets of tourism through the lenses of culture, society, and community. You will focus on the theory and practice of hospitality management as it relates to the tourism, health, service, and welfare industries.

#### INTERNATIONAL RELATIONS AND PEACE STUDIES

This area of study allows you to delve into the intricacies of conflict resolution and peace-building as well as cultivate the ability to deal with increasingly complex global issues. Your studies will draw from the three disciplines of international law, political science, and economics and help you gain the necessary critical thinking skills and a policy-oriented approach to succeed in the field.

#### CULTURE, SOCIETY AND MEDIA

This area of study enables you to analyze the societies, cultures, and values of the Asia Pacific to deepen your understanding of the issues this region faces. You will gain a global perspective, fundamental media skills, and the ability to view societal issues from several angles.

# SUBJECT LIST



This list consists of subjects for the 2019 academic year. Please note that this subject list may change for the 2021 academic year.

## LIBERAL ARTS SUBJECTS

APM Bridge Program  
 APS Bridge Program  
 Bioethics  
 Career Design I • II • III • IV  
 Computer Literacy  
 Constitution of Japan  
 Culture and Society of the Asia Pacific  
 Data Mining  
 Database Systems  
 Economy of the Asia Pacific  
 Environmental Science  
 Geography of the Asia Pacific  
 Health Science  
 History of the Asia Pacific  
 Intercultural Fieldwork I • II  
 Internet Technology Integration  
 Internship  
 Introduction to Culture and Society  
 Introduction to Development Studies

Introduction to Economics  
 Introduction to Environmental Studies  
 Introduction to GIS  
 Introduction to Intercultural Communication  
 Introduction to International Relations  
 Introduction to Media Studies  
 Introduction to Peer Leader Training  
 Introduction to Political Science  
 Introduction to the Internet  
 Introduction to Tourism and Hospitality  
 Japanese Art of Flower Arrangement  
 Japanese Art of Tea Ceremony  
 Japanese Culture and Society  
 Japanese Economy  
 Japanese Geography  
 Japanese History  
 Languages of the Asia Pacific  
 Legal Studies  
 Logical Thinking and Framework

Media Production Lab  
 Multicultural Collaborative Workshop  
 Negotiation Skills  
 Overseas Learning Design  
 Peace, Humanity and Democracy  
 Peer Leader Training I • IIA • IIB  
 Programming  
 Psychology  
 Religions of the Asia Pacific  
 Special Lecture (ICT)  
 Special Lecture (Japanese Studies)  
 Special Lecture (Liberal Arts Subject)  
 Statistics  
 Studies of Multicultural Comparison  
 Study Skills and Academic Writing  
 Traditional Japanese Arts  
 Volunteer Activities

## LANGUAGE EDUCATION SUBJECTS

### Japanese Language Classes

Business Communication in Japanese A • B  
 Career Japanese  
 Japanese Course  
 (Foundation/Intermediate/Pre-Advanced/  
 Advanced)  
 Japanese for Lectures  
 Japanese Project A • B • C • D • E • F  
 Language and Culture in Japan  
 Language and Social Topics in Japan

English for Business Presentations  
 English for Business Writing  
 English for Discussion and Debate  
 English for Journalism  
 English Project 1 • 2  
 Extensive Reading in English of the Media

### Asia Pacific Language Classes

Chinese I – IV  
 Korean I – IV  
 Malay/Indonesian I – IV  
 Spanish I – IV  
 Thai I – IV  
 Vietnamese I – IV

### English Language Classes

English Course  
 (Elementary/Pre-Intermediate/Intermediate/  
 Upper-Intermediate/Advanced)

### Specific Language Classes

English Proficiency Preparation Course I • II • III  
 Intensive Language Learning Overseas  
 Introduction to Asia Pacific Languages  
 Introduction to Official Languages of the United  
 Nations I – French  
 Introduction to Official Languages of the United  
 Nations II – Russian  
 Introduction to Official Languages of the United  
 Nations III – Arabic  
 Japanese Language Teaching  
 Japanese Linguistics for Japanese Language  
 Education  
 Special Lecture (Language Education Subject)  
 TESOL

## APM SUBJECTS

### Required Subjects

Accounting I  
 Advanced Mathematics  
 Business Ethics  
 Finance  
 Fundamental Mathematics  
 Global Management (Capstone)  
 Introduction to Management  
 Introduction to Marketing  
 Legal Strategy in Business  
 Management of Human Resources and  
 Organizational Behavior  
 Production Management

### Accounting & Finance (AF)

Accounting II  
 Advanced Accounting  
 Auditing  
 Corporate Finance  
 Cost Accounting  
 Financial Accounting I • II  
 Financial Market and Institutions  
 International Accounting  
 International Finance  
 Investment and Securities Analysis  
 Investment Strategy  
 Management Accounting  
 Special Lecture in Accounting  
 Special Lecture in Finance

### Strategic Management & Organization (SMO)

Advanced Human Resource Management  
 Advanced Organizational Behavior  
 Brand Management  
 Entrepreneurship  
 Family Business Management  
 International Logistics  
 International Transactions  
 Service Management  
 Special Lecture in Strategic Management &  
 Organization  
 Strategic Management  
 Supply Chain Management

### Innovation & Economics (IE)

Asian Economy  
 Development Economics  
 Entrepreneurship  
 International Economics  
 International Political Economy  
 Macroeconomics  
 Microeconomics  
 Operations Research  
 Product Development  
 Special Lecture in Economics  
 Special Lecture in Innovation  
 Technology Management

### Marketing (M)

Brand Management  
 Consumer Behavior  
 E-Commerce  
 International Logistics  
 International Marketing  
 Marketing Research  
 Product Development  
 Promotion and Sales Management  
 Service Management  
 Special Lecture in Marketing  
 Supply Chain Management

### APM Common Subjects

APM Field Study  
 Business Case Analysis & Communication  
 Business Data Analysis  
 Business Internship  
 Field Research Project  
 Management Information Systems  
 Social Entrepreneurship  
 Special Lecture (Management)

### Seminar Subjects

Major Seminar I • II  
 Research Seminar  
 Undergraduate Thesis

## APS SUBJECTS

### Core Subjects

Introduction to APS  
 Introduction to Area Studies

### Environment & Development (ED)

Biodiversity  
 Community Based Tourism  
 Community Development  
 Conflict and Development  
 Development Economics  
 Development Policy  
 Development Sociology and Anthropology  
 Ecotourism  
 Environment and Society  
 Environmental Communication  
 Environmental Economics  
 Environmental Modeling and Analysis  
 Environmental Policy  
 Field Study for Environment and Development  
 GIS and Remote Sensing  
 Global Environmental Issues  
 Industrial Ecology  
 International Cooperation  
 International Economics  
 International Organizations  
 NPO/NGO Studies  
 Preliminary Seminar for Environment and  
 Development  
 Politics of Development  
 Project Management in Development  
 Resource Management  
 Special Lecture in Environment and  
 Development  
 Urban Environment and Development

### Culture, Society & Media (CSM)

Cultural Anthropology  
 Cultural Studies  
 Education and Society  
 Ethnicity and the Nation State  
 Field Study for Culture, Society and Media  
 Gender Studies  
 Global History  
 Global Media and Conflict  
 Globalization and Law  
 Globalization and Regionalism  
 History of Japanese Foreign Relations  
 Identity and Politics  
 Language and Society

Media and Culture  
 Media and History  
 Media and Law  
 Media and Politics  
 Multiculturalism and Society  
 New Media and Society  
 NPO/NGO Studies  
 Preliminary Seminar for Culture,  
 Society and Media  
 Religion and Belief  
 Social Psychology  
 Social Stratification  
 Social Theory  
 Sociology of Organizations  
 Special Lecture in Culture, Society  
 and Media  
 The Humanities and Modernity  
 Transnational Sociology

### Hospitality & Tourism (HT)

Advanced Human Resource Management  
 Advanced Organizational Behavior  
 Agri-heritage and Tourism  
 Community Based Tourism  
 Cultural Anthropology  
 Culture and History of Tourism  
 Destination Marketing and Management  
 Ecotourism  
 Event and Festival Management  
 Field Study for Tourism and Hospitality  
 Health and Wellness Tourism  
 Heritage Tourism  
 Hospitality Management  
 Hospitality Marketing  
 MICE Tourism Industry  
 Operations Research  
 Preliminary Seminar for Tourism  
 and Hospitality  
 Project Management in Development  
 Resort Development  
 Sociology of Tourism  
 Special Lecture in Tourism and Hospitality  
 Tourism and Hospitality Law  
 Tourism and Social Media  
 Tourism Development and Planning  
 Tourism Economics  
 Travel Industry

## International Relations & Peace Studies (IRP)

Comparative Political Economy of the  
 Asia Pacific  
 Conflict and Development  
 Development Policy  
 Ethnicity and the Nation State  
 Field Study for International Relations and  
 Peace Studies  
 Foreign Policy of Japan  
 Geo-Politics and Post Cold War Conflicts  
 Global Issues and Policies  
 Global Media and Conflict  
 Globalization and Law  
 Globalization and Regionalism  
 History of International Politics  
 History of Japanese Foreign Relations  
 Human Rights  
 Identity and Politics  
 International Conflict Resolution  
 International Cooperation  
 International Law  
 International Organizations  
 International Political Economy  
 International Relations in the Asia Pacific  
 International Relations Theory  
 Media and Politics  
 Peace Studies  
 Political Theory  
 Politics of Development  
 Preliminary Seminar for International Relations  
 and Peace Studies  
 Regional Systems in the Asia Pacific  
 Special Lecture in International Relations and  
 Peace Studies  
 Strategic Decision Making  
 Violence and Terrorism

## APS Common Subjects A • B

APS Field Study  
 Area Studies  
 Field Research Project  
 Special Lecture (Asia Pacific Studies)

## Seminar Subjects

Field Research Project  
 Graduation Research I • II  
 Introduction to Research Methods  
 Major Seminar I • II

\*Some courses are cross-listed in more than one area of study.

## STARTING OUT

Your four-year path to global citizenship begins with intensive Japanese language study and foundation courses for your area of study. These required classes will allow you to quickly adapt to your new life in Japan and prepare you for an international career after graduation. You will then delve deeper into your studies through specialized courses and seminars, and will also have the option for internships, field studies, international exchanges, on- and off-campus programs, and thesis research.

### Sample weekly schedule for a first semester student enrolling in September\*

MONDAY	TUESDAY	WEDNESDAY	THURSDAY	FRIDAY
<ul style="list-style-type: none"> <li>Japanese Foundation I</li> <li>Japanese Foundation II</li> <li>Japanese Foundation III</li> </ul>	<ul style="list-style-type: none"> <li>Japanese Foundation I</li> <li>Japanese Foundation II</li> <li>Japanese Foundation III</li> <li>Introductory class for your major</li> </ul>	<ul style="list-style-type: none"> <li>Study Skills and Academic Writing Workshop</li> <li>Multicultural Cooperative Workshop</li> </ul>	<ul style="list-style-type: none"> <li>Japanese Foundation I</li> <li>Japanese Foundation II</li> <li>Japanese Foundation III</li> </ul>	<ul style="list-style-type: none"> <li>Japanese Foundation I</li> <li>Japanese Foundation II</li> <li>Japanese Foundation III</li> </ul>

\*Please note that your schedule may be different based on your Japanese language placement exam result and class times for your semester of enrollment. Academic schedules are subject to change.



# BROADEN YOUR HORIZONS

## THE WORLD AT YOUR FINGERTIPS

Build your international portfolio by joining an exchange program for a semester or a year at one of our international or Japanese partner universities. Choose from 142 exchange partners in 42 countries. If you are awarded an APU Tuition Reduction Scholarship, it will still remain valid during your time on an exchange program.

## TWICE THE CHALLENGE, TWICE THE REWARD

The only thing better than getting a degree from one international university is getting two degrees from two international universities at the same time. This option is available for both APS and APM students by signing up for one of APU's double degree programs. Double degree programs are available for APS students with Kyung Hee University in Korea, Salzburg University of Applied Sciences in Austria, or St. Edward's University in the United States. A double degree is available for APM students with the NEOMA Business School in France.



## LIST OF PARTNER UNIVERSITIES

### AFRICA

- Egypt**  
The American University in Cairo
- Kenya**  
United States International University
- Morocco**  
Universite Internationale de Rabat

### ASIA

- Azerbaijan**  
ADA University
- Brunei**  
Universiti Brunei Darussalam
- China**  
Beijing Normal University-Hong Kong Baptist University United International College  
Institute for Tourism Studies, Macao  
University of Macau, Macao SAR,  
The People's Republic of China  
Xi'an Jiaotong-Liverpool University
- China (Hong Kong)**  
City University of Hong Kong  
Hong Kong Shue Yan University  
The Chinese University of Hong Kong  
The Hong Kong Polytechnic University  
The Hong Kong University of Science and Technology  
The University of Hong Kong
- Indonesia**  
BINUS University  
Gadjah Mada University  
President University  
Universitas Katolik Parahyangan
- Korea**  
Kookmin University  
Dongseo University  
Ewha Womans University  
Hanyang University  
Korea University  
Kyung Hee University  
Pusan National University  
Sogang University  
Sookmyung Women's University  
University of Ulsan  
Yonsei University
- Kyrgyzstan**  
American University of Central Asia
- Malaysia**  
Taylor's University  
University of Malaya  
Universiti Sains Malaysia
- Singapore**  
Singapore Management University
- Taiwan**  
Feng Chia University  
National Chengchi University  
National Taiwan Normal University  
Tamkang University  
Tunghai University  
Yuan Ze University
- Thailand**  
Mahidol University International College  
Thammasat University
- The Philippines**  
Ateneo de Manila University  
De La Salle University  
University of the Philippines
- Japan**  
Ritsumeikan University

### EUROPE

- Austria**  
Management Center Innsbruck  
Salzburg University of Applied Sciences  
University of Applied Sciences Upper Austria  
University of Applied Sciences bfi Vienna
- Belgium**  
University of Liege  
Vesalius College Brussels
- Croatia**  
Zagreb School of Economics and Management
- Denmark**  
AARHUS BSS  
The Copenhagen Business School
- Finland**  
Laurea University of Applied Sciences  
Tampere University of Applied Sciences (TAMK)  
University of Helsinki
- France**  
Ecole Supérieure des Sciences Commerciales d'Angers – School of Management  
EM Normandie  
ESC AMIENS  
Excelia Group  
Groupe KEDGE Business School  
IESEG School of Management  
Institut Supérieur du Commerce Paris  
NEOMA Business School  
Rennes School of Business
- Germany**  
European University Viadrina Frankfurt (Oder)  
Heinrich Heine University  
Karlshochschule International University  
Otto-von-Guericke-Universität Magdeburg  
SRH University Heidelberg  
University of Hohenheim  
Zeppelin University
- Greece**  
The American College of Greece
- Iceland**  
University of Iceland
- Italy**  
Ca' Foscari University of Venice  
Università Cattolica del Sacro Cuore  
Università Commerciale Luigi Bocconi
- Lithuania**  
Vilnius University
- Norway**  
BI Norwegian Business School  
Norwegian University for Science and Technology  
University of Agder  
University of Bergen
- Poland**  
Kozminski University  
Warsaw School of Economics
- Portugal**  
ISCTE - Lisbon University Institute  
LISBON School of Economics and Management
- Romania**  
Romanian-American University
- Slovak Republic**  
University of Economics in Bratislava

### Spain

- IE University
- The Universitat Rovira i Virgili
- University of Alicante

### Sweden

- Halmstad University
- Linnaeus University
- Lund University
- Sodertorn University

### Switzerland

- Zurich University of Applied Sciences

### The Netherlands

- The Hague University of Applied Sciences
- Tilburg University
- Universiteit Leiden

### U.K.

- Oxford Brookes University
- The University of Hertfordshire
- University of Kent
- University of Leicester
- Westminster Business School, University of Westminster

### LATIN AMERICA

#### Argentina

- Universidad Argentina de la Empresa

#### Mexico

- Instituto Tecnológico Y De Estudios Superiores de Monterrey
- Universidad de Monterrey

#### Peru

- Universidad del Pacifico
- Universidad San Ignacio de Loyola S.A.

### NORTH AMERICA

#### Canada

- HEC Montreal
- Saint Mary's University
- York University
- The University of British Columbia
- Université du Québec a Montreal
- University of Lethbridge
- University of Ottawa, Telfer School of Management
- University of Waterloo

#### U.S.A.

- American University
- Carroll College
- College of Staten Island, City University of New York
- Florida International University
- Georgia Institute of Technology
- Grand Valley State University
- James Madison University
- Minnesota State University Moorhead
- Nazareth College of Rochester
- Old Dominion University
- San Diego State University
- St. Edward's University
- University at Buffalo, The State University of New York
- The University of New Mexico
- University of North Florida
- University of Oklahoma
- University of Wyoming

### OCEANIA

#### Australia

- Charles Sturt University
- James Cook University
- La Trobe University
- Victoria University



# A CAMPUS LIKE NO OTHER



Take students originating from around ninety countries or regions and put them in a space that encourages experimentation and discovery. What results is a completely unique and vibrant community of students who not only embrace APU's multicultural atmosphere but thrive in it through a colorful array of activities, events, clubs, and societies. No matter what your interests are, APU has a place for you.

Throughout the school year, APU designates several Multicultural Weeks where students can showcase the cultures of one country or region. Take the lead as an organizer or join in these celebrations of world culture as a performer. It is the learning experience of a lifetime.



## A few of the student-led organizations on campus (in alphabetical order)

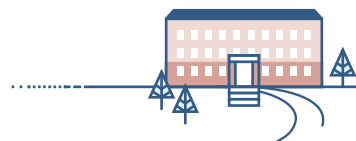
- APU Karate Club
- APU Model United Nations
- APU Soccer Club
- APU Tea Ceremony Club
- Global Business Leaders
- Gospel★Soul
- Habitat APU
- K-Muse K-pop Dance Troupe
- Men's Lacrosse Team
- PRENGO Overseas Volunteering Club
- Rugby Club
- Subculture Research Circle
- Wadaiko Raku Japanese Drumming Club
- Yossha-koi Japanese Dance Troupe

## 2019 Academic Year Multicultural Weeks (in alphabetical order)

- Chinese Week
- Fashion Week
- Indian Week
- Indonesian Week
- Korean Week
- Love Pride
- Malaysian Week
- Mongolian Week
- Oceania Week
- Taiwan Week
- Thai Week
- Vietnamese Week



# YOUR HOME AWAY FROM HOME



Located on top of a small mountain at an altitude of 330 meters with beautiful natural surroundings, APU's campus overlooks the city of Beppu and its coastline. This amazing view is just the beginning of what you will find here on campus.

## ON-CAMPUS FACILITIES/AMENITIES

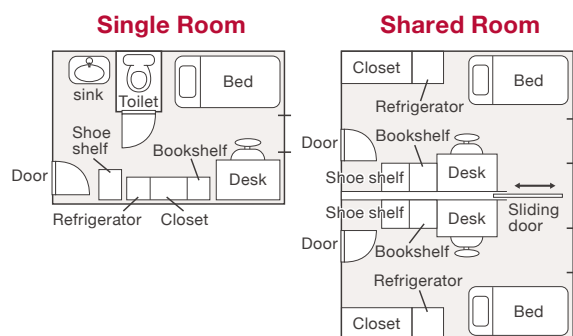
- State-of-the-art library and media center
- Student union building with a cafeteria, café, convenience store, Japanese tea ceremony room, meeting spaces, and music/dance studios
- Multipurpose auditorium
- Outdoor amphitheater
- Gymnasium and fitness center
- Multipurpose fields for soccer, rugby, lacrosse, baseball, etc.
- Basketball courts
- Tennis courts
- Health clinic and counseling room
- ATMs
- Postal services
- Local food trucks

## NOT YOUR TYPICAL RESIDENCE HALL

With students from diverse cultures living under one roof, the time you will spend in our on-campus residence hall, AP House, is an unforgettable experience. This unique setting enables you to adapt to your new life in Japan and learn about the cultures of the world through interaction with peers while having a private space to concentrate on your studies. To assist you with this transition, each floor has experienced students selected as Resident Assistants (RAs) who will answer your questions and concerns and hold activities for you to join.

## ROOM OPTIONS

You will live in either a single or shared room. Shared rooms allow you to have an even greater intercultural experience as you will be living with a Japanese roommate. These rooms are separated by a lockable sliding door for your privacy. All rooms are fully furnished.



## AP HOUSE STATISTICS

<b>378</b> shared rooms	<b>932</b> single rooms	<b>1,105</b> residents	<b>52.9%</b> international students
<b>57</b> countries and regions represented	<b>44</b> communal kitchens	<b>49,000 JPY</b> monthly rent including utilities	

## AP HOUSE FACILITIES

- Private shower rooms
- Japanese-style communal baths
- Computer rooms
- Study rooms
- Small convenience store
- 24-hour security
- Indoor recreation facilities like billiards
- Outdoor basketball courts
- Air conditioning unit in each room
- Wi-Fi available in all rooms



Library



Food trucks



Fitness center



Cafeteria



Student Union



Outdoor amphitheater



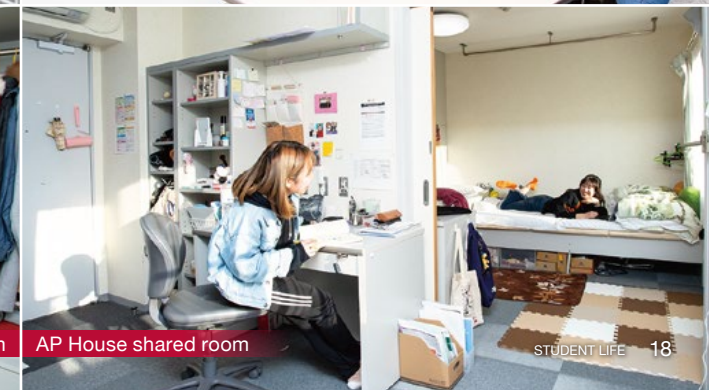
Co-op convenience store



AP House kitchen



AP House single room



AP House shared room

\*Fees are subject to change.



# SETTLING IN



## EXPERIENCE JAPAN

Japan is not only the world's third largest economic center but also one of the most popular travel destinations thanks to its rich traditional and modern culture combined with beautiful landscapes. The country also prides itself on cutting-edge technology and maintaining one of the highest safety records found anywhere in the world. For the ideal location to earn your university degree, look no further.

## YOUR NEW HOMETOWN

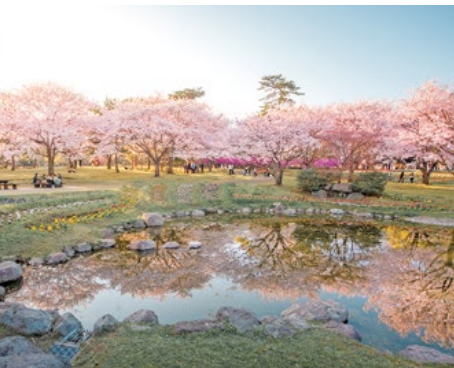
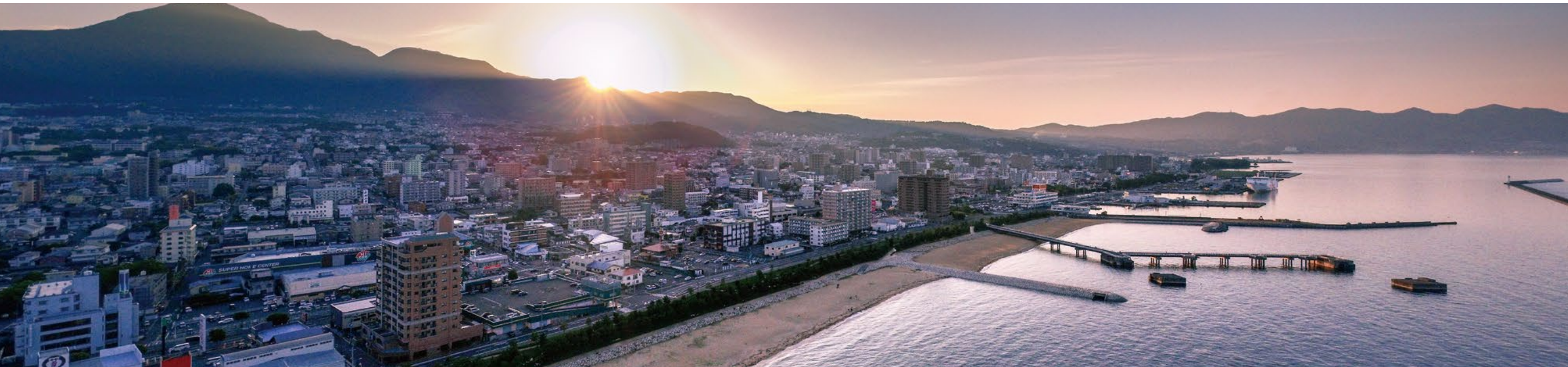
APU is located in Kyushu, the southernmost major island of Japan, in the bayside city of Beppu. The city's historic backstreets and abundance of hot spring baths make it one of Japan's most visited cities by Japanese and international tourists alike. Beppu is a very safe city with a low cost of living compared to other popular study destinations in Japan and abroad. Dive into the local culture by participating in festivals, sporting events, and other activities alongside the welcoming community.


## A COMFORTABLE LIFESTYLE

From your second year, you will move off campus into downtown Beppu and choose among living in an APU-owned residence hall, private apartment, or shared student housing. APU provides support to help you make the transition from on-campus to off-campus accommodation. You will find many entertainment options such as shopping malls, cafés, karaoke, bowling, and restaurants with international food. In addition, Beppu also has an abundance of clean drinking water, fresh air, seaside walking paths, sports facilities as well as medical centers to support your healthy lifestyle. Another advantage is that, as an APU student, you will be covered by Japan's National Health Insurance.

## ALL IN A DAY'S WORK

Part-time jobs are another option for you to gain real world experience. You are allowed to work on or off campus for up to 28 hours a week during the semester and 40 hours a week during vacations. APU offers to help you obtain the correct work permit before you start to work. Please note that availability of part-time work may vary. Additionally, while on-campus jobs may not require Japanese language ability, off-campus jobs often require at least a conversational level of Japanese.



BEPPU AT A GLANCE			AVERAGE TEMPERATURE	
<b>116,974</b> total residents	<b>4,387</b> international residents	 <b>2,217</b> hot springs	<b>JANUARY</b> 5°C / 41°F	<b>APRIL</b> 14°C / 57°F
<b>1,374 METERS</b> Tsurumidake, Beppu's tallest mountain	<b>NO.1</b> in Japan <b>NO.2</b> in the world for the amount of hot spring water	<b>JULY</b> 28°C / 82°F	<b>OCTOBER</b> 20°C / 68°F	



# CREATING A BRIGHTER TOMORROW

## TESTING THE WATERS

Gain insight into the working world by joining one of APU's internship programs, business competitions, or joint projects with external organizations, and directly connect your studies to your career goals. Through this, you will also have the chance to create invaluable networks with professionals at the top of their fields. There are specific programs for which you can earn academic credits as well.

## EXPLORE YOUR OPTIONS

With the knowledge, language ability, and experience you obtain at APU, there are no limits to where your degree will take you. Thanks in part to APU's Career Office, we have an unprecedented job placement rate of 96.2% for our students seeking employment, and in the past year alone, approximately 250 companies and organizations visited APU to specifically recruit our students for a variety of employment positions in Japan and beyond. This means you do not even need to leave campus to get your foot in the door. Many students pursue higher education after graduation, and a number also go on to establish their own businesses in Japan and overseas.

## PATHWAYS AFTER GRADUATION

### Sample of employers (in alphabetical order)

Accenture Japan Ltd  
Amazon Japan G.K.  
Apple Japan, Inc.  
Daio Paper Corporation  
Deloitte Tohmatu Consulting LLC  
FUJITSU LIMITED  
Hilton Tokyo  
Hitachi High-Tech Solutions Corporation  
KOSÉ Corporation  
Kumon Institute of Education Co., Ltd.  
Kuraray Co., Ltd.  
Mizuho Financial Group, Inc.  
NTT DATA Corporation  
Panasonic Corporation  
Resona Bank, Limited.  
Robert Walters Japan KK  
Sheraton Hotels and Resorts  
SoftBank Corp.  
State Street Trust and Banking Co., Ltd.  
Sumitomo Mitsui Auto Service Company, Limited  
Sumitomo Mitsui Banking Corporation  
Unilever Japan K.K.  
UNIQLO CO., LTD.  
Yanmar Co., Ltd.  
YUSEN LOGISTICS CO.,LTD.

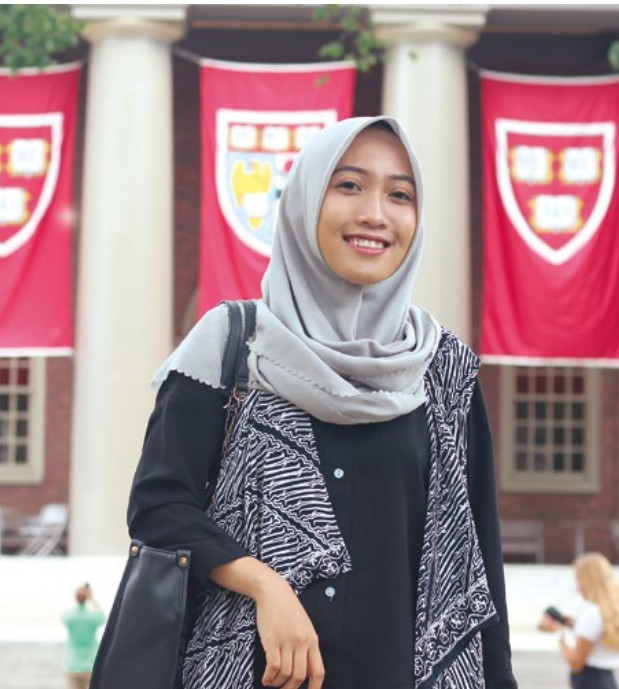


### Sample of graduate schools (in country/region's alphabetical order)

The University of Melbourne, Australia  
University of British Columbia, Canada  
Dalhousie University, Canada  
Copenhagen Business School, Denmark  
Trier University, Germany  
ESSEC Business School, France  
The Chinese University of Hong Kong, Hong Kong  
City University of Hong Kong, Hong Kong  
Aoyama Gakuin University, Japan  
Kyoto University, Japan  
The University of Tokyo, Japan  
Ewha Womans University, Korea  
Yonsei University, Korea  
Utrecht University, Netherlands  
BI Norwegian Business School, Norway  
National University of Singapore, Singapore  
Singapore Management University, Singapore  
Lund University, Sweden  
Chulalongkorn University, Thailand  
London School of Economics and Political Science, UK  
The University of Manchester, UK  
University of Oxford, UK  
Harvard University, USA  
The Ohio State University, USA  
University of Michigan, USA



# ALUMNI JOURNEYS



APU

MASTER'S AT HARVARD  
GRADUATE SCHOOL OF EDUCATION

## Indah Shafira Zata Dini (Indonesia)

APS, Graduated in 2019  
Lives in: United States of America

I joined a number of student organizations, projects, and multicultural weeks, but the activity that brought the most significant personal growth for me was working with the president's office in a program to teach intercultural-mindfulness to Japanese business employees. Due to this and other experiences as both a teacher and a student, I found myself becoming more interested in the field of education. Deciding to pursue my studies further in graduate school, I received strong support from APU professors and fellow students, and I eventually decided on Harvard's Graduate School of Education. APU's unique environment allows you to develop your communication, multitasking, and time-management skills while interacting with people from different backgrounds. Make the most of these opportunities and share your strengths with those around you to grow together and achieve your goals.



APU

DOLOON BOLDOG LLC

## Oyun Samdan (Mongolia)

APM, Graduated in 2008  
Lives in: Mongolia

When I was a student at APU, professors would tell us that we were fortunate to be learning in the international environment APU offers, but at the time I didn't fully realize what they meant. Now, in my current job as the CEO of a kitchen and home furniture company, I recognize the advantages I have gained from studying at APU. I was able to build a network with other APU alumni from around the world which, especially in this era, is an advantage in many careers. Through the interactions with Japanese businesses and organizations I work with, I have also been able to continue using the Japanese language skills I obtained at APU along with other principles such as being open-minded and respectful towards your peers. I believe that life itself is always a challenge, and a life without hurdles would be bland. So whatever path you choose in life, work hard to achieve your goals, and be passionate in what you do.

APU

WORLD FOOD  
PROGRAMME

UN  
VOLUNTEERS



## Dong Uk Shin (Korea)

APS, Graduated in 2016  
Lives in: Germany

Following graduation from APU, I interned at the World Food Programme for a year and then became a UN International Volunteer to gain more experience in international development. My current role is with the UN Volunteers headquarters in Bonn, Germany, with responsibilities in raising awareness of and promoting (especially through social media) the work of UN Volunteers across the world. In a way, I am a storyteller because I share inspiring stories of other volunteers in creative ways using multimedia tools and platforms. Working in the UNV means I am part of an extremely multicultural workplace. But this diversity makes me feel right at home as it reminds me of the daily interactions I had at APU with my inspiring international friends and faculty.

APU

YUSEN LOGISTICS

## Mukhammadaziz Tojiboev (Uzbekistan)

APM, Graduated in 2017  
Lives in: Japan

Enrolling at APU was my first exposure to an international environment. From the first day on campus, I found that adapting to a foreign culture was smooth thanks to APU's supportive, friendly atmosphere. The experience I gained in APU's intercultural communication has been one of my key assets for my career since graduation. I work for a Japanese logistics company, and apart from standard financial tasks, my work demands a constant switch between portfolios of clients from different countries. For people like me who have experienced APU's diverse environment, dealing with people of different cultures is something we are quite used to and do not find it difficult. As a new APU student you can create new connections and try things you have never thought of or experienced before. You will make plenty of interesting friends at APU who will help you become a global citizen.





# FEES AND SCHOLARSHIPS

## FEES FOR INITIAL YEAR OF STUDY\*1



	FIRST YEAR	SECOND YEAR TRANSFER	THIRD YEAR TRANSFER
Program Duration	4 years	3 years	2 years
Admission Fee	200,000 JPY (1,818 USD)	200,000 JPY (1,818 USD)	200,000 JPY (1,818 USD)
Tuition	1,300,000 JPY*2 (11,818 USD)	1,500,000 JPY (13,636 USD)	1,500,000 JPY (13,636 USD)
Comprehensive Renters' Insurance	17,010 JPY (155 USD)	13,010 JPY (118 USD)	8,980 JPY (82 USD)
AP House Entrance Fee	228,000 JPY (April) / 203,500 JPY (September) (2,073 USD (April) / 1,850 USD (September))		
AP House Monthly Rent	49,000 JPY (445 USD)	49,000 JPY (445 USD)	49,000 JPY (445 USD)

\*1 All the fees above are subject to change.

US dollar equivalents are for REFERENCE ONLY, based on the rate of 1:110.

\*2 Tuition for the second to the fourth year of study is 1,500,000 JPY per year.

### Admission Fee

The admission fee is required for all students, regardless of scholarship amount, and is usually due within approximately four weeks after admission result notification. This fee is non-refundable under any circumstance.

### Tuition

A payment of your first semester tuition is due in order to complete your enrollment procedures. The remaining tuition will be due at a later time. For APU Tuition Reduction Scholarship recipients, this amount will decrease based on the percentage awarded.

### Comprehensive Renters' Insurance

This insurance is required for all students for protection in case of liability, and its fee is required from all students, regardless of the scholarship amount.

### AP House Entrance Fee

This fee is required for all students, regardless of the scholarship amount. The fee includes a moving-in fee (32,000 JPY), security deposit (98,000 JPY), and rent (49,000 JPY per month) for two months for April enrollees and for one and half months for September enrollees.

### LIVING EXPENSES

Living expenses for a year (including rent listed above) amount to approximately 1,000,000 JPY (approx. 9,100 USD).

### SCHOLARSHIPS

APU awards Tuition Reduction Scholarships to outstanding international students. These cover 30%, 50%, 65%, 80%, or 100% of your tuition until graduation. You are eligible to apply if you will hold a student visa while studying at APU. Additional scholarships are available after enrollment. Scholarships at APU are primarily merit-based.



# APPLY TO APU



## APPLICATION PERIOD

### April 2021 enrollment:

June 1, 2020 (Mon) – October 14, 2020 (Wed)

### September 2021 enrollment:

September 1, 2020 (Tue) – March 24, 2021 (Wed)

If you reside in Japan, China, India, Indonesia, Korea, Thailand, or Viet Nam, visit the admissions website for additional information.

### Transfer applicants have separate application requirements and deadlines.

Please check the admissions website for more details.

[https://admissions.apu.ac.jp/how\\_to\\_apply/transfer\\_students/](https://admissions.apu.ac.jp/how_to_apply/transfer_students/)

## MINIMUM REQUIREMENTS FOR ADMISSION

### Education:

First year applicants: 12 years or equivalent of standard education

Transfer applicants: 13-14 years or equivalent of standard education

### Minimum language test score for English-basis applicants:

TEST	FIRST YEAR	TRANSFER
IELTS	6.0*1	6.5*2
TOEFL iBT® Test*3	75	85
TOEIC® L&R Test*3	750	800
Cambridge English Language Assessment	169	176
PTE Academic	50	58
EIKEN	Pre-1	1

\*1 You must have a minimum of 5.5 in each section.

\*2 You must have a minimum of 6.0 in each section.

\*3 TOEIC, TOEFL, TOEFL iBT and TOEFL ITP are registered trademarks of Educational Testing Service (ETS). This publication is not endorsed or approved by ETS.

### Minimum language test score for Japanese-basis applicants:

TEST	FIRST YEAR	TRANSFER
JLPT N1	100	110
JLPT N2	120	140
EJU (Japanese)	Listening and Listening-Reading and Reading 250 Writing 30	Listening and Listening-Reading and Reading 280 Writing 35

## HOW TO GET STARTED

Create an account in our online application system, complete your online application, upload your documents, pay your application fee, and complete your online assessment. Use the link below to create your account!

[https://admissions.apu.ac.jp/apply\\_online/](https://admissions.apu.ac.jp/apply_online/)

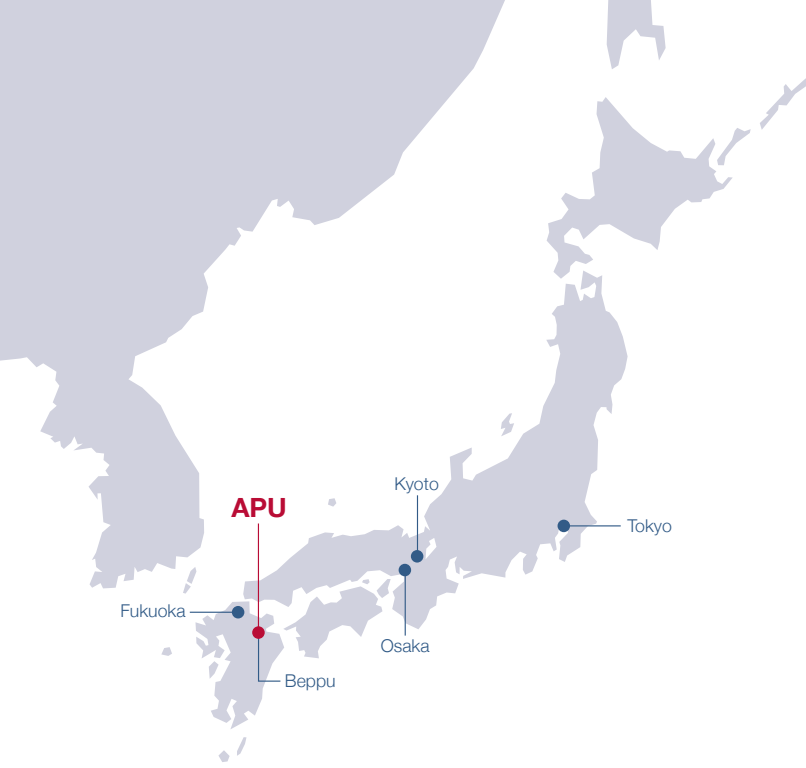


For more information regarding the interview and online assessment process and your estimated final result date, refer to our application handbooks on our download page below.

[https://admissions.apu.ac.jp/material\\_download/](https://admissions.apu.ac.jp/material_download/)







## CONTACT US

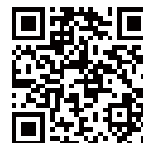
There are APU offices in the following countries and regions. You are encouraged to make inquiries at your local offices where possible. If you live in a country without an APU office or representative, please contact the APU Admissions Office directly.

## APU ADMISSIONS OFFICE

Ritsumeikan Asia Pacific University  
1-1 Jumonjibaru, Beppu, Oita 874-8577 Japan  
Tel: +81-977-78-1119

<https://admissions.apu.ac.jp/>  
Email: [welcome@apu.ac.jp](mailto:welcome@apu.ac.jp)

Ritsumeikan.APU  
 APUAdmissionsOffice  
 ritsumeikanapu



## APU OVERSEAS OFFICES

### CHINA

Ritsumeikan Liaison Office,  
Shanghai Jiao Tong University  
D, 18F Shentong Xinxi Guangchang,  
No. 55, Huaihai West Rd.  
Shanghai City 200030 China  
Tel: +86-21-6283-5104  
Fax: +86-21-6283-5247  
Email: [apuchina@apu.ac.jp](mailto:apuchina@apu.ac.jp)

### INDONESIA

APU Indonesia Information Center  
C/O MARQUEE, Mayapada Tower I,  
11th Floor, Jl.Jend. Sudirman Kav. 28  
Jakarta 12920 Indonesia  
Tel: +62-21-5289-7328/7392  
Email: [apu-ina@apu.ac.jp](mailto:apu-ina@apu.ac.jp)  
 [apuindonesiaoffice](https://www.facebook.com/apuindonesiaoffice)

### KOREA

APU Korea Office  
#608, Halla Classic Officetel 6th Floor,  
23 Gangnam Daero 84 Gil, Gangnam-gu,  
Seoul 06233 Korea  
Tel: +82-2-564-3425/3426  
Fax: +82-2-564-3427  
<http://www.ritsapu-kr.com>  
Email: [hello@ritsapu-kr.com](mailto:hello@ritsapu-kr.com)

### TAIWAN

APU Taiwan Office  
C/O MIBC, F10F., NO.209, Sec. 1,  
Civic Blvd., Datong Dist., Taipei City 103,  
Taiwan  
Tel: +886-2-2181-1666  
Email: [taipei@apu.ac.jp](mailto:taipei@apu.ac.jp)  
 APUTW

### THAILAND

APU Thailand Office  
Room 1015, 10th Floor,  
Serm-Mit Tower 159/16 Soi Asoke,  
Sukhumvit 21 Road Wattana,  
Bangkok 10110 Thailand  
Tel/Fax: +66-2-665-7145  
Email: [thailand@apu.ac.jp](mailto:thailand@apu.ac.jp)  
 APUThailand

### VIET NAM

APU Viet Nam Office  
238/2B Nguyen Thi Minh Khai St.,  
Ward 6, District 3, Ho Chi Minh City,  
Viet Nam  
Tel: +84-28-39-30-6432  
<http://vietnam.apu.ac.jp/>  
Email: [vietnam@apu.ac.jp](mailto:vietnam@apu.ac.jp)  
 apuvietnam

## APU OVERSEAS REPRESENTATIVES

### INDIA

(For applicants residing in Delhi/NCR)  
Ms. Deepti Singh  
Ritsumeikan APU Delhi Office  
18A103 WeWork, Berger Delhi One  
Floor 19, Sector 16B,  
Noida Uttar Pradesh- 201301, INDIA  
Tel: +91-73037-86004  
Email: [d-india@apu.ac.jp](mailto:d-india@apu.ac.jp)

### INDIA

(For applicants residing outside Delhi/NCR)  
Ms. Ishana Malkani  
Think Education Advisory Services  
LLP  
1116B, Dalamal Towers, Free Press  
Journal Marg, Nariman Point,  
Mumbai, India 400021  
Tel: +91-22-4005-1675  
Email: [m-india@apu.ac.jp](mailto:m-india@apu.ac.jp)

### SRI LANKA

Dr. Harin Gunawardena  
183/1, Nawala Road, Nugegoda,  
Sri Lanka  
Tel: +94-714251314



TOP GLOBAL  
UNIVERSITY  
JAPAN



STUDY in JAPAN