

Shape your world



Ritsumeikan
Asia Pacific University



RITSUMEIKAN ASIA PACIFIC UNIVERSITY

2019 GRADUATE PROSPECTUS

APU GRADUATE SCHOOLS FACTS AND FIGURES

Placed in the
Top 25 Universities

for the 2018 Japan
University Ranking
by the Times Higher Education

Third Japanese
university to become



Selected by the
Government of Japan in 2014
as one of the country's

**"TOP GLOBAL
UNIVERSITIES"**

Graduate School of Management
ranked as one of the
**TOP 30 MBA
PROGRAMS IN ASIA**
by Quacquarelli Symonds (QS) in 2017

59



Countries and Regions
Represented by Students

96%



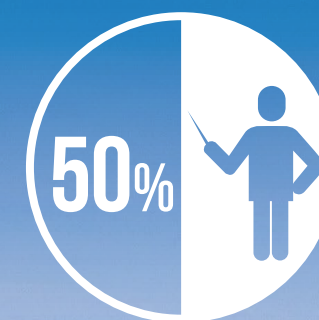
International Students

90%



Students Who
Receive Scholarships

50%



International Faculty

25



Countries and Regions
Represented by Faculty

SHAPE YOUR WORLD

With over 100 years of tradition and history, the Ritsumeikan Academy opened Ritsumeikan Asia Pacific University (APU) in 2000 as Japan's first genuinely international university. APU's graduate schools, fully accredited by the Japanese Ministry of Education, Culture, Sports, Science and Technology (MEXT), welcome students into an entirely English-based curriculum within a unique multicultural environment. Since the opening of our graduate school in 2003, efforts have been made to further its education and research initiatives as well as expand its contributions to the Asia Pacific region. The graduate schools at APU focus on Asia Pacific studies, with study options geared towards tackling the complex issues facing the societies and environments of the Asia Pacific region, as well as management, with a focus on the Japanese business style and the dynamic world of international business.

CONTENTS

4	Programs
5	Graduate School of Management (GSM)
7	GSM Faculty
8	GSM Specializations
12	GSM Curriculum
13	Graduate School of Asia Pacific Studies (GSA)
15	GSA Faculty
17	GSA Divisions
25	GSA Curriculum
26	Ph.D. in Asia Pacific Studies
27	Research
28	Career Pathways
29	Student Life
30	Beppu City
31	How to Apply
32	Scholarships & Academic Calendar

PROGRAMS

SCHOOL	PROGRAM		DEGREE AWARDED	SPECIALIZATION / DIVISION	PAGE
Graduate School of Management (GSM)	Master's Program	Business Administration (MBA)	Master of Business Administration	Japanese Management (JM)	8
				Accounting and Finance (AF)	9
				Marketing and Management (MM)	10
				Innovation and Operations Management (IOM)	11
Graduate School of Asia Pacific Studies (GSA)	Master's Programs	Asia Pacific Studies (APS)	Master of Science (Asia Pacific Studies)	International Relations (IR)	17
				Society and Culture (SC)	18
		International Cooperation Policy (ICP)	Master of Science (International Cooperation Policy)	International Public Administration (IPA)	19
				Public Health Management (PHM)	20
				Sustainability Science (SS)	21
				(Including the Dual Degree International Material Flow Management (IMAT) Program)	22
				Tourism and Hospitality (TH)	23
				Development Economics (DE)	24
	Doctoral Program	Asia Pacific Studies (APS)	Doctor of Philosophy (Asia Pacific Studies)		26

APPLY ONLINE

<http://r.apu.jp/applygrad>

For more information, please refer to page 31.



Toshitsugu Otake, Ph.D. (Japan)
Professor and Dean of the Graduate School of Management

Degree:
 Ph.D. in Industrial Engineering (Iowa State University, USA)
 M.Sc. in Statistics (Iowa State University, USA)
 M.Sc. in Mathematics (University of Central Missouri, USA)
 M.A. in Economics (University of Central Missouri, USA)
Research Fields:
 Financial Risk Management, Statistical Modeling, Logistics Engineering, FinTech

The mission of APU's Graduate School of Management (GSM) is to cultivate creative, well-rounded professionals and leaders who will play a central role in resolving management issues at globalizing enterprises and other organizations by imparting advanced management skills, innovation, a good understanding of business ethics, and a deep insight into globalization.

The Graduate School of Management has enjoyed an excellent reputation since it was established in 2003. It was given a 3 Palmes of Excellence rating (Excellent Business Schools with reinforcing international influence) in 2009 and was recognized as one of the top 20 business schools in the field of international management in East Asia in 2012-2013 by Eduniversal. APU has also served as a council member representing Japan in the Association of Asia Pacific Business Schools since 2012. Beginning in January 2019, APU Vice President Kenji Yokoyama will serve as President of this Association. In addition, APU is continuously recognized in Japan by the Nikkei Shimbun as one of the top three educational institutions for employability of graduates.

The Graduate School of Management prepares you for managerial positions with advanced knowledge in international business and understanding of Japanese management practices. It is the only institution in the world where you can do so in an all-English curriculum within a culturally diverse learning environment.

Let GSM be your first step toward a successful global business career.

MBA PROGRAM OVERVIEW

The MBA program at APU is conducted entirely in English in a culturally diverse learning environment. It offers a strong foundation in established international and Japanese management techniques, interactive classes with faculty, and students from around the world, as well as opportunities for independent research and internships in the university's extensive Japanese business network. Students will benefit from an AACSB-accredited, international standard business management curriculum grounded in a Japanese focus on business sustainability, management quality control, and customer service excellence.

PROGRAM STRUCTURE AND CONTENT

The GSM curriculum consists of four components: required subjects (analytical foundations, core business fundamentals, and capstone courses); elective subjects (specialization courses); core-related subjects (courses related to the core business fundamentals and Japanese language courses); and management seminars.

In addition to fulfilling the credit requirements, students will conduct a research project and complete an extended piece of writing in the form of a master's thesis, independent final report, or internship-based case study. Students will also have the option to take basic Japanese language courses, credits from which will count towards program completion requirements. Japanese language knowledge has aided many of our GSM graduates in seeking employment at Japanese companies.

MASTER'S PROGRAM OVERVIEW

MASTER OF BUSINESS ADMINISTRATION

Degree:	Master of Business Administration (MBA)
Specializations:	Accounting and Finance (AF) Marketing and Management (MM) Innovation and Operations Management (IOM) Japanese Management (JM)
Enrollment Semesters:	April, September
Program Duration:	2 years*
Yearly Intake:	40 students
Total Tuition:	3,600,000 JPY

*Accelerated completion in 1.5 years may be possible upon further examination after enrollment. The total tuition for the programs will not change even if you complete your degree before the standard period of completion.

INTERNATIONAL ACCREDITATION

The Associate to Advance Collegiate Schools of Business (AACSB - <http://www.AACSB.edu/>) is an internationally recognized accreditation organization of business schools. Only the world's leading business schools can receive accreditation, with approximately 790 schools having obtained accreditation so far. Both APU's undergraduate and graduate business schools received this prestigious accreditation in 2016.



STUDENT DEMOGRAPHICS



75 Students



397 Alumni



31 Countries and Regions Represented by GSM Students

29

Average Age

PROFESSOR	RESEARCH FIELDS
Behrooz Asgari, Ph.D.	Technology Management, Economics of Technological Change, Industrial and Systems Engineering, Operations Research
Munim Kumar Barai, Ph.D.	Public Finance, WTO and International Business, Macroeconomics, Financial and Capital Markets, Poverty and Grameen Bank (GB) Model of Microcredit
Rian Beise-Zee, Dr., Associate Dean of the Graduate School of Management	Service Management and Marketing, Innovation Marketing, Business Administration
Shu-Ching Chen, Ph.D.	Marketing and Management
William B. Claster, Ph.D.	Fundamental Informatics, Intelligent Informatics, Statistical Science, Business Administration, General Mathematics, Sentiment Mining, Artificial Intelligence, Data Science
Takeshi Fujimoto, Ph.D.	Business Administration, Marketing
Ali Haidar, Ph.D.	Managerial Commitment, Managerial Values, Employment Relations
Muhammad T. Khan, Ph.D.	Spread Spectrum Communications, Applications of IT, Community Building
Abdullah-Al-Kafi Majumdar, Ph.D.	Optimization Problems (in Operations Research), Tower of Hanoi Problem and its Generalizations, Smarandache Numbers and Functions
Haruo Nakayama, MBA	Corporate Finance
Toshitsugu Otake, Ph.D., Dean of the Graduate School of Management	Financial Risk Management, Statistical Modeling, Logistics Engineering, FinTech
Phillip Dean Pardo, MBA	Business Analytics, Hospitality Management Accounting, Sentiment Mining, CRM, Valuation, Taxation, Auditing, Virtuous Management, Natural Capital Accounting
Kanichiro Suzuki, Ph.D.	Organizational Theory, Knowledge Management, Leadership, Positive Psychology, Design Thinking
Mariner Wang, Ph.D.	Business Administration, Global Logistics, Global Logistics in East Asia, International Trade, Asia Pacific Management, International Business English
Kenji Yokoyama, Ph.D.	International Trade Operations, Institutions and Customs, Family Business, Japanese Management
Wei-Bin Zhang, Ph.D.	Growth Theory, Trade Theory, Urban and Regional Economics, Economic Dynamics, Ethics, East-Asia Philosophy

ASSOCIATE PROFESSOR	RESEARCH FIELDS
Lailani Alcantara, Ph.D.	International Expansion, Innovation Diffusion, Macro Organizational Behavior
Michael Angelo A. Cortez, Ph.D.	Environmental Accounting, Sustainable Manufacturing, Sustainable Tourism, Labor Movement, Financial Performance and Analysis
Damon Drummond, Ph.D.	Strategic Management, Case Analysis, Global Corporate Social Responsibility, Community Business, Human Resources Management, Comparative Management, Enterprise Resource Systems
Seiichi Fujii, Ph.D.	New Product Development, Innovation Management, Technology Management
Rebecca Chunghee Kim, Ph.D.	International Management, Corporate Social Responsibility, Business Ethics
Rintaro Kozuma, Ph.D.	Number Theory
Geunhee Lee, Ph.D.	Consumer Behavior, Tourism Marketing, Viral Marketing, Co-Creation
Hiroto Sato, Ph.D.	Management Accounting



Kanichiro Suzuki, Ph.D., Professor (Japan)

Research Fields: Organizational Theory, Knowledge Management, Leadership, Positive Psychology, Design Thinking

“The MBA program at APU prepares you to engage with Japanese corporations around the world. It opens the door to a managerial career in Japanese companies as well as companies that seek to enter or expand in the Japanese market. APU stands for the global integration of Japan, and it is the place you must be to explore your potential and establish your legacy in the international business world.”

SPECIALIZATION OVERVIEW

Supported by its world-class corporations, Japan is the first Asian country to have successfully industrialized. The Japanese Management (JM) specialization focuses on the philosophy and practices that are key to such enterprises. With their emphases on quality, innovation, and customer service and with their unique style of human resource management and stakeholder model of governance, companies in Japan provide an alternative to that of the shareholder model practiced mostly in the English-speaking countries—including the USA. This specialization focuses on the successes and failures of Japanese corporations and provides a model of corporate management in the Asia Pacific Region.



The Global Competency Enhancement Program (GCEP) is held at APU to support the globalization of corporate talent. Until now this program has had success with a number of Japanese companies. Pictured above are students dispatched from FamilyMart (left) and NEC Corporation (right) giving presentations on their findings through the program.

SPECIALIZATION SUBJECTS

- Management in Asia and Japan
- Japanese Corporations and Asia Pacific
- Management of Japanese Family Business
- Quality and Operations Management
- Financial Institutions and Markets
- Hospitality Management

“The extensive diversity of culture, experience, and business mindsets that come together at APU truly manifests during class discussions, where valuable insights and new perspectives naturally emerge. This is just one aspect of APU’s appeal for those seeking excellence, achievement, and impactful contribution in the future. If you would like to be remembered as a person who makes things happen, disrupts the norms, and changes the landscape and stereotypes, I strongly believe that APU’s MBA is the right program for you.”

Yassin Ennajih (Morocco, Graduated in 2017)
Data Scientist Intern, Transcommunica, Japan
African Business Education Initiative for Youth (ABE Initiative) Scholarship Recipient



ACCOUNTING AND FINANCE (AF)

MASTER OF BUSINESS ADMINISTRATION



Phillip Dean Pardo, MBA, Professor (Canada)

Research Fields: Business Analytics, Hospitality Management Accounting, Sentiment Mining, CRM, Valuation, Taxation, Auditing, Virtuous Management, Natural Capital Accounting

“With ninety-five percent of students originating from outside Japan, our AACSB-accredited MBA program is truly international, with a diverse mixture of languages, cultures, and perspectives. Our business school meets the highest international standards and our students, faculty, and alumni are all actively engaged and contribute to the global community.”

SPECIALIZATION OVERVIEW

The Accounting and Finance (AF) specialization discusses theories and concepts of corporate finance, financial engineering, financial institutions, financial accounting, and managerial accounting, providing students with the skills to understand and interpret financial and accounting information. The aim of the specialization is to provide students with tools in the areas of accounting and finance to formulate strategies, design control systems, and evaluate the impact of corporate strategies on various stakeholders.



GSM professors and students attending the 2017 Beta Gamma Sigma Induction Ceremony. Beta Gamma Sigma is the international honor society serving business programs accredited by AACSB.

SPECIALIZATION SUBJECTS

- Corporate Finance
- Financial Engineering and Risk Management
- Financial Institutions and Markets
- Managerial Accounting
- Financial Accounting

“There are three good reasons to choose APU’s MBA program: the active learning curriculum, the multicultural environment, and the ability to learn Japanese at the same time. Throughout the program, we learned not only from the professors’ lectures, but also through group presentations, class discussions, study cases, and research projects. With enough determination to make the most of the two year program, you can graduate from APU with a very strong profile: a global-minded MBA holder who can speak multiple languages.”

Avila Carlo Irawan (Indonesia, Graduated in 2017)
Management Consultant, Skylight Consulting Inc., Japan



MARKETING AND MANAGEMENT (MM)

MASTER OF BUSINESS ADMINISTRATION



Lailani Alcantara, Ph.D., Professor (Philippines)

Research Fields: International Expansion, Innovation Diffusion, Macro Organization Behavior

“At APU, we bring the world to our classroom. Our MBA students and faculty come from different parts of the world with diverse professional backgrounds. Being part of our program means that you are not just achieving your potential—you are building a network of professionals who will make a difference in the world.”

SPECIALIZATION OVERVIEW

The Management and Marketing (MM) specialization focuses on understanding and managing the human dimensions of organizations. For business organizations, some of the most important stakeholders are managers, employees, and customers. Their decisions and actions are guided by a whole range of factors, from very objective aspects to subjective perceptions, emotions, and moral values. Thus, market conditions are in a constant flux which necessitates adaptation as well as provides opportunities for creating new market and social values. Consequently, this specialization emphasizes the need of organizations to develop multi-dimensional and differentiated strategies, as well as sustainable competences and capabilities, not only to cope with the changing business environment but also to lead innovatively and responsibly.



Professor Alcantara giving feedback during her Capstone course, where students develop and propose solutions to problems affecting regional industries after consulting with local business leaders.

SPECIALIZATION SUBJECTS

- Human Resource Management
- Management of Japanese Family Business
- Management in Asia and Japan
- Marketing Strategy
- Marketing Research
- Product Development Strategy
- Hospitality Management

“The exceptional academic resources and conducive learning environment at APU helped me to strike a balance between theoretical study and practical application in real-life situations. The managerial prowess, analytical thinking, and research skills I developed fully prepared me for a Doctoral Program in Economics, which I now currently pursue at another outstanding university in Japan.”

Joseph Junior Aduba (Nigeria, Graduated in 2017)
Ph.D. Student, Ritsumeikan University, Japan
African Business Education Initiative for Youth (ABE Initiative) Scholarship Recipient



INNOVATION AND OPERATIONS MANAGEMENT (IOM)

MASTER OF BUSINESS ADMINISTRATION



Rian Beise-Zee, Dr., Professor and Associate Dean of the Graduate School of Management (Germany)

Research Fields: Service Management and Marketing, Innovation Marketing, Business Administration

“Today’s industries and industry leaders are always in need of innovative ideas, products, and business models. Equally important are a sustainable means of facilitating the implementation and organization of these elements through an equally innovative operations strategy. The courses in our Innovations and Operations Management division provide students with the intellectual and practical tools to master both of these and to link them to their own future business goals.”

SPECIALIZATION OVERVIEW

The Innovation and Operations Management (IOM) specialization focuses on production planning, flexibility in production management, inventory management, quality management, management of supply chain, and the impact of information technology on the whole process of production. Another focus of this specialization is on the management of product development and the role of entrepreneurship from a technology-based perspective. This specialization also addresses the question as to why some countries are more innovative than others.



2017 MBA Alumni Panel held for MBA students considering employment in Japan.

SPECIALIZATION SUBJECTS

- Quality and Operations Management
- Information Technology Management
- Supply Chain Management
- Entrepreneurship and New Business
- Project Management
- National Innovation Systems

“APU’s multicultural environment provides the perfect opportunity to learn about the business standards of other countries, as well as multiple opportunities for collaboration and discussion with classmates through small class sizes. This has given me new insights and knowledge from different cultural perspectives while also allowing me to share my own point of view. At APU, I am constantly being challenged to be a better version of myself all while preparing to become a leader with global values.”

Stephanie Natania Kezia (Indonesia)
Master of Business Administration Student



CURRICULUM

GRADUATE SCHOOL OF MANAGEMENT (GSM)

A minimum of forty-four credits is required for program completion. All subjects in the chart below are awarded two credits upon successful completion.

COURSE NAMES AND SEMESTER DISTRIBUTION

		First Year		Second Year	
		1st Semester	2nd Semester	3rd Semester	4th Semester
LECTURE SUBJECTS	Required Subjects (22 credits)	<ul style="list-style-type: none">• Quantitative Analysis and Statistics• Managerial Economics• International Management• Leadership and Organization Behavior• Technology Management	<ul style="list-style-type: none">• Marketing• Business Ethics• Finance• Accounting• Theories of Institutions	<ul style="list-style-type: none">• Strategic Management	
	Elective Subjects (8 credits or more)	<ul style="list-style-type: none">• Japanese Corporations and Asia Pacific• Management of Japanese Family Business• Quality and Operations Management• Corporate Finance• Financial Engineering and Risk Management• Financial Institutions and Markets• Managerial Accounting• Financial Accounting• Human Resource Management		<ul style="list-style-type: none">• Management in Asia and Japan• Marketing Strategy• Marketing Research• Product Development Strategy• Hospitality Management• Information Technology Management• Supply Chain Management• Entrepreneurship and New Business• Project Management• National Innovation Systems	
	Core Related Subjects	<ul style="list-style-type: none">• Advanced Research Methods• Japanese for Communication I*1	<ul style="list-style-type: none">• Management Information Systems• Japanese for Communication II	<ul style="list-style-type: none">• Database Management• Japanese for Communication III	<ul style="list-style-type: none">• Decision Making Under Uncertainty• Japanese for Communication IV
	Seminars (6 credits)	<i>Selection of seminar advisor</i>	<ul style="list-style-type: none">• Management Seminar I	<ul style="list-style-type: none">• Management Seminar II<i>Research Progress Presentation</i>	<ul style="list-style-type: none">• Management Seminar III<i>Submission and examination of the final research project</i>

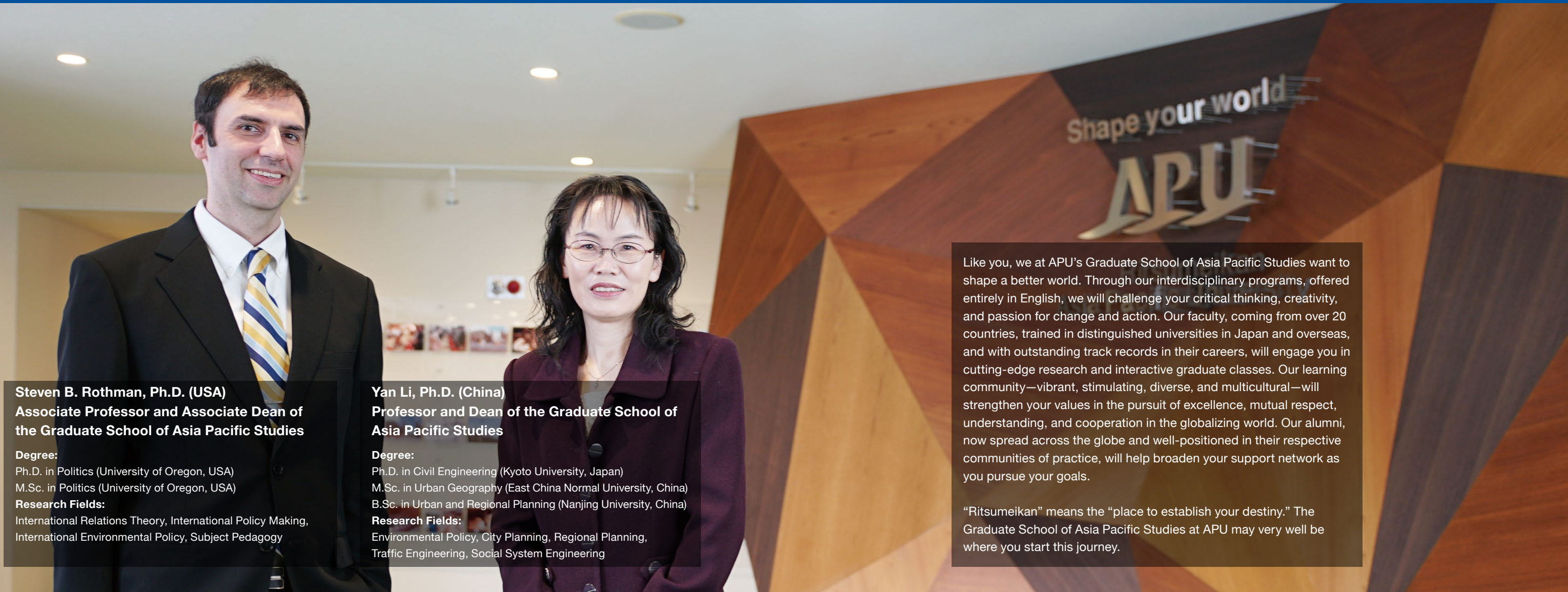
*1 Students must complete or test out of Survival Japanese (1 and 2) in order to enroll in this course.

The following list is composed of companies and organizations where APU's MBA students have interned*2, in some cases for the fulfillment of their graduate thesis requirement (per the **internship-based case study** option).

INTERNSHIPS

- | | | |
|--|--|--|
| <ul style="list-style-type: none">• 3Any Inc.• 7-Eleven Malaysia• Akebono Brake Industry Co., Ltd.• Arcterus Co., Ltd.• Asian Development Bank, Philippines• British American Tobacco Japan, Ltd.• Catalyst K.K. | <ul style="list-style-type: none">• Convention Linkage, Inc.• Fisco Japan Co., Ltd.• Japan Tourism Marketing Co.• Kyosan Electric• Lenovo, China• Mitsubishi Fuso Truck and Bus Corp.• Oita Transportation Co., Ltd. | <ul style="list-style-type: none">• Pricewaterhouse Coopers Co., Ltd.• Sugahara Kisen Inc.• Tech Health Solutions LLC• United Nations ESCAP, Thailand• United Nations University• VINAFCO (Vietnam)• Voith Fuji Hydro K.K. |
|--|--|--|

*2 Please note that APU does not guarantee internships to students. Students must seek them independently.



Steven B. Rothman, Ph.D. (USA)
Associate Professor and Associate Dean of the Graduate School of Asia Pacific Studies

Degree:
Ph.D. in Politics (University of Oregon, USA)
M.Sc. in Politics (University of Oregon, USA)

Research Fields:
International Relations Theory, International Policy Making, International Environmental Policy, Subject Pedagogy

Yan Li, Ph.D. (China)
Professor and Dean of the Graduate School of Asia Pacific Studies

Degree:
Ph.D. in Civil Engineering (Kyoto University, Japan)
M.Sc. in Urban Geography (East China Normal University, China)
B.Sc. in Urban and Regional Planning (Nanjing University, China)

Research Fields:
Environmental Policy, City Planning, Regional Planning, Traffic Engineering, Social System Engineering

Like you, we at APU's Graduate School of Asia Pacific Studies want to shape a better world. Through our interdisciplinary programs, offered entirely in English, we will challenge your critical thinking, creativity, and passion for change and action. Our faculty, coming from over 20 countries, trained in distinguished universities in Japan and overseas, and with outstanding track records in their careers, will engage you in cutting-edge research and interactive graduate classes. Our learning community—vibrant, stimulating, diverse, and multicultural—will strengthen your values in the pursuit of excellence, mutual respect, understanding, and cooperation in the globalizing world. Our alumni, now spread across the globe and well-positioned in their respective communities of practice, will help broaden your support network as you pursue your goals.

“Ritsumeikan” means the “place to establish your destiny.” The Graduate School of Asia Pacific Studies at APU may very well be where you start this journey.

MASTER'S PROGRAMS OVERVIEW

MASTER'S PROGRAM IN ASIA PACIFIC STUDIES

The Master's Program in Asia Pacific Studies aims to educate and transform students into competent leaders ready to handle challenges facing the Asia Pacific region. Individuals embarking on this program should possess a keen interest in research pertaining to one of two specializations: International Relations or Society and Culture. The broad range of issues addressed in these specializations are supported by four pillars: analytical foundation courses, core courses on the Asia Pacific region, division-specific courses and research-oriented intensive seminar courses. Under the supervision of their chosen faculty advisors, students will formulate and conduct research that systematically reflects knowledge gained through coursework as well as ideally through fieldwork in the Asia Pacific region.

MASTER'S PROGRAM IN INTERNATIONAL COOPERATION POLICY

The Master's Program in International Cooperation Policy aims to cultivate human resources who will contribute to a peaceful and mutually beneficial coexistence in the Asia Pacific region. Individuals entering this program should possess the ability to incorporate diverse perspectives in their research and will frame their studies around one of five specializations: International Public Administration, Public Health Management, Sustainability Science, Tourism and Hospitality, and Development Economics. Students can further build upon their current knowledge and cultivate their research skills through a variety of workshops and seminars offered throughout the year where they can exchange ideas with influencers within their respective fields. In the end they will develop the practical problem-solving skills and creativity required for sustainable development within the Asia Pacific region.

MASTER'S PROGRAMS OVERVIEW

ASIA PACIFIC STUDIES (APS)

Degree: Master of Science in Asia Pacific Studies
Divisions: International Relations (IR)
Society and Culture (SC)

Enrollment Semesters: April, September
Program Duration: 2 years*
Yearly Intake: 15 students
Total Tuition: 2,800,000 JPY

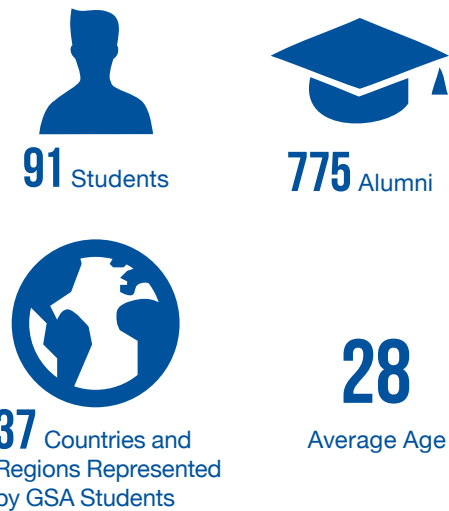
INTERNATIONAL COOPERATION POLICY (ICP)

Degree: Master of Science in International Cooperation Policy
Divisions: International Public Administration (IPA)
Public Health Management (PHM)
Sustainability Science (SS) (including IMAT)
Tourism and Hospitality (TH)
Development Economics (DE)

Enrollment Semesters: April, September
Program Duration: 2 years*
Yearly Intake: 45 students
Total Tuition: 2,800,000 JPY

*Accelerated completion in 1 or 1.5 years may be possible upon further examination after enrollment. The total tuition for the programs will not change even if you complete your degree before the standard period of completion.

STUDENT DEMOGRAPHICS



ASIA PACIFIC STUDIES (APS)

PROFESSOR	RESEARCH FIELDS
Yufu Iguchi, Ph.D.	Gender Studies, Cultural Studies, Southeast Asian Studies (Malaysian Studies), Intellectual History
Yoshinori Kaseda, Ph.D.	International Politics, International Security, Asia and North Korea Relations
Chan Hoe Kim, Ph.D.	Folklore Studies and Japanese Literature
Peter A. Mantello, Division Head (Society and Culture)	Surveillance, Predictive Policing, Videogame Theory, Conflict and Media, Politics and the Cyber Realm
Joseph Proglar, Ph.D.	Cultural History, Education, Media Studies
Robert A.C. Salazar, Ph.D.	Sociology-Anthropology, Social Organizations, Social Institutions and Social Movements, Social Impact Assessment and Evaluation, Southeast Asia
Hideo Sasagawa, Ph.D.	Area Studies in Southeast Asia
Yoichiro Sato, Ph.D.	International Relations and Foreign Policy (Asia-Pacific), Comparative Politics (Southeast Asia), Maritime Security
Kumi Seike	Sociology, Cultural Anthropology (including Ethnology and Folklore), Religion
Shunichi Takekawa, Ph.D.	Politics and the Media
Kaori Yoshida, Ph.D.	Media Studies (Representation Politics: Gender, Ethnicity, Nation), Cultural Studies, Popular Culture, Comparative Culture Studies
Hidetaka Yoshimatsu, Ph.D.	International Relations, International Political Economy, Regional Studies (East Asia)
Chieko Yoshimoto, Ph.D.	History of the Orient, Linguistics

ASSOCIATE PROFESSOR	RESEARCH FIELDS
David J. Askew	Law, Intellectual History, History of Political Thought, Modern Japanese History
Seunghoon Emilia Heo, Ph.D.	International Relations and Global Studies, Peace and Reconciliation, Diplomatic History, International Organization, Intercultural and Interreligious Dialogue
Shinji Kojima, Ph.D.	Social Inequality and Stratification, Globalization, Sociology of Work, Social Movements
Steven B. Rothman, Ph.D., Associate Dean of the Graduate School Asia Pacific Studies	International Relations Theory, International Policy Making, International Environmental Policy, Subject Pedagogy
Hiroki Tahara, Ph.D.	Vietnamese and Language Education
Utpal Vyas, Ph.D., Division Head (International Relations)	Political Economy and International Relations of Japan and China, East Asian Regional Politics, European Politics

INTERNATIONAL COOPERATION POLICY (ICP)

PROFESSOR	RESEARCH FIELDS
Hideki Fuchinoue, Ph.D.	Peacebuilding, Resilience Building
Nader Ghotbi, Ph.D., Division Head (Public Health Management)	Applied Health Sciences, Philosophy/Ethics, Civil Law, Clinical Psychology and Public Hygiene Studies/Health Science
Hary Gunarto, Ph.D.	Digital Media, Tourism, UNESCO Natural and Cultural Heritage
Junichi Hirata, Ph.D.	Monetary Economics, Japanese Economy
Sangho Kim, Ph.D.	Theoretical Economics, Econometrics, Applied Economics, Economic Policy
Rikio Kimura, Ed.D.	Social Welfare Studies (Community Development, NGO, Social Enterprise), Area Studies (Cambodia), Pedagogy (Adult Education)
Timothy Lee, Ph.D.	Health-Oriented Tourism, Cultural Heritage Tourism, Tourism Development which Incorporates East Asian Standards, Festival and Mega Events, Gaming Industry
Yan Li, Ph.D., Dean of the Graduate School of Asia Pacific Studies	Environmental Policy, City Planning, Regional Planning, Traffic Engineering, Social System Engineering
Serik Meirmanov, Ph.D.	General Life Science, Social Psychology, Human Genetics, Human Pathology, Public Hygiene Studies/Health Science
Kaoru Natsuda, Ph.D., Division Head (Development Economics)	International Development Studies, International Political Economy, Economic Policy, Industrial Development, Rural and Community Development, Automotive Industry, Apparel Industry
Giguruwa G. D. Nishantha, Ph.D.	Software, Educational Technology, Media Information/Data Base, Computer System Networks, Crowdsourcing Applications
Davar Pishva, Ph.D.	Environmentally Sound Technologies (ESTs), Simulation and Modeling (SaM), Decision Science (DS)
John Rose, Ph.D.	DNA Nanotechnology, Nanobioscience, Biomolecular Computing, Soft Computing, Bioinformatics
Yasushi Suzuki, Ph.D.	Fiscal Studies/Finance Theory, Theoretical Economics, Institutional Economics, Political Economy
Hiroshi Todoroki, Ph.D.	Geography, Area Studies, Human Geography
Shunso Tsukada, Ph.D.	Project Finance, Public Private Partnership for Infrastructure, Development Economics, International Economics, Environmental Policy, Emission Trading, Circular Economy
Susumu Yamagami	International Politics, Comparative Studies, Area Studies (East Asia), International Relations (Asia Pacific Region)
Yukio Yotsumoto, Ph.D.	Sociology, Tourism

ASSOCIATE PROFESSOR	RESEARCH FIELDS
Thanh Huong Bui, Ph.D.	Human Geography, Tourism Psychology, Tourism Development and Cultural Heritage Conservation, Tourism Management
Tatsuya Hirai, Ph.D.	Cross-cultural Counseling, Career Counseling, Group Approach, Positive Psychology
Thomas Edward Jones, Ph.D.	Environmental Policy, Nature-Based Tourism, Protected Areas, Regional Development
Takuro Kikkawa, Ph.D.	Comparative Politics, Area Studies
Faezeh Mahichi, Ph.D., IMAT Program Coordinator	Environmental Education and Awareness, Industrial Ecology and Sustainable Environment, Environmental Microbiology, Air/Soil/Water Pollution, Global Warming, Coral Reef Ecosystem Health, Organic Agriculture, Chemical Disaster Management
Kozo Otsuka, Ph.D.	Applied Economics, Innovation and Productivity
Xuepeng Qian, Ph.D., Division Head (Sustainability Science)	Environmental Policy and Management, Regional Development, Sustainable Systems Engineering, Behavioral Science
Tomonori Sudo, Ph.D., Division Head (International Public Administration)	Environmental and Climate Policy, Resource/Environment/Climate Economics, Development Economics and Finance, Development Policy
Yukiko Takashiba	International Law, International Dispute Settlement, Human Rights and Humanitarian Law, Transitional Justice, Law of International Organizations
M. Kazem Vafadari, Ph.D., Division Head (Tourism and Hospitality)	Tourism, Hospitality Marketing, Human Geography, Cultural and Environmental Studies, Folklore Studies, Agricultural Heritage Tourism
Hiromi Yamashita, Ph.D.	Environmental Risk Communication, Coastal Wetland Restoration and Decision Making, Education for Sustainable Development

INTERNATIONAL RELATIONS (IR)

M. SC. ASIA PACIFIC STUDIES



Utpal Vyas, Ph.D., Associate Professor and Division Head (United Kingdom)

Degree: Ph.D. in International Relations (University of Sheffield, UK), M.Sc. in Political Economy (University of Sheffield, UK), LL.B. in Law (University of Birmingham, UK)
Research Fields: Political Economy and International Relations of Japan and China, East Asian Regional Politics, European Politics

"The International Relations division at APU provides a range of opportunities for students to deepen their knowledge of current international issues and develop the research skills necessary to have a strong impact on the global stage. Students who take advantage of the opportunities available here will find that careers in international organizations, academia, diplomacy, corporate leadership, government services, media, and many other fields will become open to them."

DIVISION OVERVIEW

The International Relations (IR) division is aimed at expanding students' empirical knowledge base and sharpening their analytical and theoretical thinking skills regarding social, political, economic, and security phenomena in the globalizing world. The courses in this division provide a useful knowledge base for both academic-bound students and practitioner-bound students with intended careers in security, diplomacy, and media. While taking subjects such as international security, international law, and conflict resolution, students will also focus on writing a thesis or research report.

DIVISION SUBJECTS

- Regionalism and Globalization
- International Law
- International Political Economy
- Comparative Politics and Government
- Conflict Resolution
- International Security
- Special Studies (International Relations)

FACULTY AND THEIR RESEARCH FIELDS

Yoshinori Kaseda, Ph.D., Professor

International Politics, International Security, Asia and North Korea Relations

Yoichiro Sato, Ph.D., Professor

International Relations and Foreign Policy (Asia-Pacific), Comparative Politics (Southeast Asia), Maritime Security

Hidetaka Yoshimatsu, Ph.D., Professor

International Relations, International Political Economy, Regional Studies (East Asia)

Seunghoon Emilia Heo, Ph.D., Associate Professor

International Relations and Global Studies, Peace and Reconciliation, Diplomatic History, International Organization, Intercultural and Interreligious Dialogue

Steven B. Rothman, Ph.D., Associate Professor and Associate Dean of the Graduate School of Asia Pacific Studies

International Relations Theory, International Policy Making, International Environmental Policy, Subject Pedagogy

"APU not only has a quality International Relations program but also houses an active research center. By presenting at its annual Asia Pacific Conference (AP Conference), I received valuable feedback from international scholars that helped to improve my research. Through the conferences, seminars, and workshops I attended at APU, I was able to meet many experts and build my professional network."

Tran Thi Bich (Viet Nam, Graduated in 2017)
Ph.D. Student, University of Antwerp, Belgium



SOCIETY AND CULTURE (SC)

M. SC. ASIA PACIFIC STUDIES



Peter A. Mantello, Professor and Division Head (Canada)

Degree: M.F.A. Media Arts (Concordia University), B.F.A. Film Production (Concordia University), B.A. Asian Studies (Carleton University)

Research Fields: Surveillance, Predictive Policing, Videogame Theory, Conflict and Media, Politics and the Cyber Realm

"Situated in the Japanese city of Beppu and surrounded by nature, APU's graduate program is an ideal place for contemplative and reflective graduate study. In the Society and Culture division, students deepen their knowledge of the rapid transformations taking place in the world today through the lens of media, society and culture. By immersing themselves in the unique and diverse environment at APU, our students become open-minded, multifaceted researchers and scholars."

DIVISION OVERVIEW

The Asia Pacific is one of the most rapidly developing regions in recent decades. To capture the patterns of social and cultural changes occurring, the Society and Culture (SC) division is devoted to promoting comparative academic research on the region. Students can acquire practical skills in formulating and conducting research using theories and methods developed in sociology, cultural anthropology, media, and communication studies. With knowledge concerning the social and cultural backgrounds of the countries and regions, students will have greater employment opportunities in government, industry, commerce, and academia.

DIVISION SUBJECTS

- Changing Social Landscapes
- Media and Communication
- Migration and Trans-Nationalism
- Social Organizations and Institutions
- Sociology and Everyday Life
- Cultural Change
- Special Studies (Society and Culture)

FACULTY AND THEIR RESEARCH FIELDS

Yufu Iguchi, Ph.D., Professor

Gender Studies, Cultural Studies, Southeast Asian Studies (Malaysian Studies), Intellectual History

Chan Hoe Kim, Ph.D., Professor

Folklore Studies and Japanese Literature

Joseph Progler, Ph.D., Professor

Cultural History, Education, Media Studies

Robert A.C. Salazar, Ph.D., Professor

Sociology-Anthropology, Social Organizations, Social Institutions and Social Movements, Social Impact Assessment and Evaluation, Southeast Asia

Hideo Sasagawa, Ph.D., Professor

Area Studies in Southeast Asia

Kumi Seike, Professor

Sociology, Cultural Anthropology (including Ethnology and Folklore), Religion

Shunichi Takekawa, Ph.D., Professor

Politics and the Media

Kaori Yoshida, Ph.D., Professor

Media Studies (Representation Politics: Gender, Ethnicity, Nation), Cultural Studies, Popular Culture, Comparative Culture Studies

Shinji Kojima, Ph.D., Associate Professor

Social Inequality and Stratification, Globalization, Sociology of Work, Social Movements

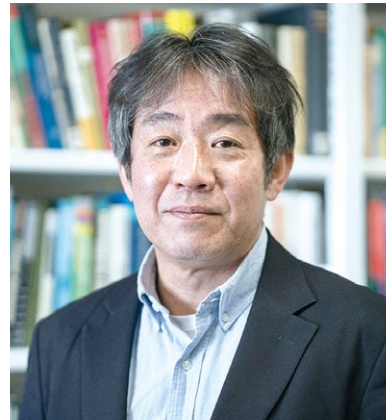
"Due to my desire to pursue a career in academic work related to the field of Japanese popular culture, I was motivated to join the Society and Culture division. The professors in this division specialize in a broad range of topics and encourage their students to analyze their lectures critically. By interacting and discussing directly with these professors and my classmates, I have broadened my perspectives both academically and professionally as a global-minded citizen."

Alisha Rabuepin (Thailand)
Society and Culture Division Student



INTERNATIONAL PUBLIC ADMINISTRATION (IPA)

M. SC. INTERNATIONAL COOPERATION POLICY



Tomonori Sudo, Ph.D., Associate Professor and Division Head (Japan)

Degree: Ph.D. in International Studies (Waseda University, Japan)

Work Experience: Japan International Cooperation Agency (JICA) (Japan), African Development Bank (Tunisia), Japan Bank for International Cooperation (JBIC) (Japan), Institute for Global Environmental Strategies (IGES) (Japan), Overseas Economic Cooperation Fund (OECF) (Japan)

Research Fields: Environmental and Climate Policy, Resource/Environment/Climate Economics, Development Economics and Finance, Development Policy

"Our global society is changing rapidly and drastically. While conflict and friction are bound to occur, we are living in a mutually-dependent society where people, goods, money and information are move freely beyond borders. We must tackle global issues to achieve sustainable development. Under such circumstances, domestic public policy may affect and/or be affected by the public policies of other countries. In this sense, collaborative action among the various societies is a key to solving issues. The International Public Administration Division addresses these topics and explores various solutions and measures to improve our society and future."

DIVISION OVERVIEW

The International Public Administration (IPA) division is aimed at providing knowledge and skills to those who are interested in pursuing an advanced career in national and international governmental organizations. This division enables students to improve professional and practical skills to manage and evaluate administrative operations and policies in national, regional, and global settings. The subjects in this division relate to international organizations, international cooperation policy, and public administration, and form the foundation on which each student can further build a more focused study depending on their intended policy field.

DIVISION SUBJECTS

- Disaster Relief and Rehabilitation
- International Public Administration
- International Organizations
- Project Management
- Planning and Evaluation
- Community Development
- Special Studies (International Public Administration)

FACULTY AND THEIR RESEARCH FIELDS

Rikio Kimura, Ed.D., Professor

Social Welfare Studies (Community Development, NGO, Social Enterprise), Area Studies (Cambodia), Pedagogy (Adult Education)

Yasushi Suzuki, Ph.D., Professor

Fiscal Studies/Finance Theory, Theoretical, Economics, Institutional Economics, Political Economy

Susumu Yamagami, Professor

International Politics, Comparative Studies, Area Studies (East Asia), International Relations (Asia Pacific Region)

Takuro Kikkawa, Ph.D., Associate Professor

Comparative Politics, Area Studies

Yukiko Takashiba, Associate Professor

International Law, International Dispute Settlement, Human Rights and Humanitarian Law, Transitional Justice, Law of International Organizations

PUBLIC HEALTH MANAGEMENT (PHM)

M. SC. INTERNATIONAL COOPERATION POLICY



Nader Ghotbi, Ph.D., Professor and Division Head (Iran)

Degree: M.D.; Ph.D. in Health Economics (Kyoto University, Japan), M.D. in Medicine (Tehran University of Medical Sciences, Iran)

Research Fields: Applied Health Sciences, Philosophy/Ethics, Civil Law, Clinical Psychology and Public Hygiene Studies/Health Science

"The principal aim of the Public Health Management division is to develop graduates who can contribute to innovation and development at local, national, and international levels in the field of public health management. The division combines education, research, and practice, and is likely to be of interest to medical professionals, health administrators, and representatives from civil society organizations engaged in public health, and others allied with the medical field."

DIVISION OVERVIEW

The Public Health Management (PHM) division teaches students three fundamental skills: skills in managing the budget, finance, economics, and accounting of healthcare costs; skills in epidemiology, health statistics, and research methodology as well as information management; and skills in public health, mainly preventive medicine and environmental health. This division puts emphasis on economics and finances as well as administrative management of healthcare services at both the public and private sectors, while preserving the standard foundations of conventional public health education. Moreover, it encourages students at an early stage to focus on healthcare case studies that relate to significant issues in the Asia Pacific region. They start by reviewing current health issues as reflected in papers and by raising research questions with policy implications from the very beginning. This aspect of teaching and research is looked upon as a strategic approach throughout the whole length of the program.

FACULTY AND THEIR RESEARCH FIELDS

Serik Meirmanov, Ph.D., Professor

General Life Science, Social Psychology, Human Genetics, Human Pathology, Public Hygiene Studies/Health Science

John Rose, Ph.D., Professor

DNA Nanotechnology, Nanobioscience, Biomolecular Computing, Soft Computing, Bioinformatics

DIVISION SUBJECTS

- Environmental Health
- Biostatistics
- Healthcare Economics
- Public Health Essentials
- Epidemiology
- Bioinformatics
- Special Studies (Public Health Management)

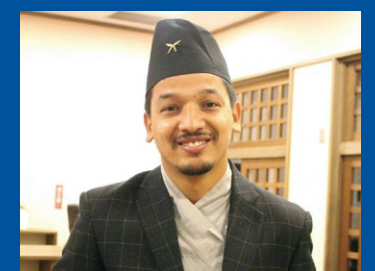
"Studying in APU is like joining an exclusive world journey. Interesting and academically stimulating lectures, in addition to significant hands-on experiences, have given me the chance to familiarize myself with in-depth knowledge of international public administration. Supportive faculty, various campus activities, and ample opportunities for research funding and assistance have also provided the right mixture of knowledge, skills, and attitude necessary for me to take a step higher in my career path."

Jie Lin (China)
International Public Administration Division Student
Japanese Grant Aid for Human Resource Development Scholarship (JDS) Recipient



"Studying PHM in Japan, a forerunner in the Global Health Index, gave me the perfect opportunity to understand how a near faultless healthcare system functions. For a healthcare professional from a developing country like myself, this was a dream come true. The blend of lectures and classroom discussions with the out-of-the-box-thinking faculty members gave me valuable insight into global health and how I could learn from it."

Binay Lamichhane (Nepal, Graduated in 2017)
Senior Quality Assurance Pharmacist, QbD Pharmaceuticals Pvt. Ltd, Nepal
Asia Development Bank - Japan Scholarship Program Recipient



SUSTAINABILITY SCIENCE (SS)

M. SC. INTERNATIONAL COOPERATION POLICY



Xuepeng Qian, Ph.D., Associate Professor and Division Head (China)

Degree: Ph.D. and Master in Urban and Regional Planning (Ritsumeikan University, Japan), Bachelor in Civil Engineering and International Economics (Shanghai Jiao Tong University, China)
Research Fields: Environmental Policy and Management, Regional Development, Sustainable Systems Engineering, Behavioral Science

“Due to climate change and other threats to the planetary boundaries, we must accelerate the transitions to sustainable development, which will bring both challenges and chances to all our environmental, social, and economic systems. Our experienced faculty members in the Sustainability Science division are fully committed to helping students develop outstanding research and problem-solving skills that will contribute to their future careers involving transitions towards sustainability.”

DIVISION OVERVIEW

The Sustainability Science (SS) division focuses on the application of science for achieving the goals of sustainable development. This division analyzes the planning and implementation of policies and actions that deal with the relationship between society and nature with the ultimate goal of creating a sustainable future for all. Study involves the scientific understanding of society-nature interactions; linking research with policy and actions; generating new knowledge, tools and techniques; and enhancing scientific and institutional capability for promoting sustainability and resilience. Students are expected to gain a holistic perspective, integrative skills and interdisciplinary knowledge as they engage in analyzing and managing particular problems and issues of population-resource-technology-institution interactions.

DIVISION SUBJECTS

- Environment and Natural Resources Conservation
- Advanced Environmental Geosciences
- Environmental Policy, Law and Administration
- Environmental Economics
- Urban Sustainability
- Industrial Ecology
- Special Studies (Sustainability Science)

FACULTY AND THEIR RESEARCH FIELDS

Yan Li, Ph.D., Professor and Dean of the Graduate School of Asia Pacific Studies
Environmental Policy, City Planning, Regional Planning, Traffic Engineering, Social System Engineering

Davar Pishva, Ph.D., Professor
Environmentally Sound Technologies (ESTs), Simulation and Modeling (SaM), Decision Science (DS)

Thomas Edward Jones, Ph.D., Associate Professor
Environmental Policy, Nature-Based Tourism, Protected Areas, Regional Development

Faezeh Mahichi, Ph.D., Associate Professor and IMAT Program Coordinator
Environmental Education and Awareness, Industrial Ecology and Sustainable Environment, Environmental Microbiology, Air/Soil/Water Pollution, Global Warming, Coral Reef Ecosystem Health, Organic Agriculture, Chemical Disaster Management

Hiromi Yamashita, Ph.D., Associate Professor
Environmental Risk Communication, Coastal Wetland Restoration and Decision Making, Education for Sustainable Development

“During the master’s program at APU, I met students from dozens of different countries with different religions, cultures, and perspectives. We all dreamed of fulfilling our personal goals and making a difference in our home countries. My professors helped me to comprehensively understand Japan’s urban management policies, and as a result I am optimistic and firmly believe that I can make a great contribution to the improvement of Shanghai’s environment.”

Limin Qiu (China, Graduated in 2014)
Principal Staff Member, Shanghai Environmental Protection Bureau, China
Japanese Grant Aid for Human Resource Development Scholarship (JDS) Recipient



INTERNATIONAL MATERIAL FLOW MANAGEMENT (IMAT)

DUAL DEGREE WITH TRIER UNIVERSITY OF APPLIED SCIENCES, GERMANY



Peter Heck, Dr., Professor and IMAT Program Director (Germany)

Degree: Ph.D. in Geography (Saarland University, Germany)
Research Fields: Regional Material Flow Management, Zero Emission and Circular Economy, Green Technology, Green Finance and Regional Added Value, Bio-Economy, Green Growth, Climate protection and Biodiversity



Faezeh Mahichi, Ph.D., Associate Professor and IMAT Program Coordinator (Iran)

Degree: Ph.D. in Life Science Bioengineering (Tokyo Institute of Technology, Japan), M.A. in Life Science Biodynamics (Tokyo Institute of Technology, Japan)
Research Fields: Environmental Education and Awareness, Industrial Ecology and Sustainable Environment, Environmental Microbiology, Air/Soil/Water Pollution, Global Warming, Coral Reef Ecosystem Health, Organic Agriculture, Chemical Disaster Management

DIVISION OVERVIEW

IMAT is a dual-degree program managed jointly by APU and the Institute of Applied Material Flow Management (IfaS), an innovative research institute of the Trier University of Applied Sciences (Germany). Students will spend their first year studying at APU and the second year at the Zero-Emission Campus Birkenfeld in Germany.

The program offers integrated knowledge in engineering, economics, and law, as well as in the natural and social sciences. In addition to the learning goals of the Sustainability Science division, IMAT offers multidisciplinary courses to prepare students to become young professionals in zero emission systems design with profound knowledge in renewable energy, integrated water resource management and other sustainable community development areas. Students will also have the opportunity to conduct field work in Japan and participate in an internship in Germany. IMAT students will submit a master’s thesis to IfaS in Germany. A concise summary of this thesis is to be submitted to APU in the form of a research report. Upon completion of the program, students receive two master’s degrees, a Master of Science in International Cooperation Policy (from APU) and a Master of Engineering in International Material Flow Management (from Trier University of Applied Sciences).

DIVISION SUBJECTS

- Greenhouse Gas Abatement Strategies and Carbon Trading
- Principles of Industrial Material Flow Management
- Zero Emission, Circular Economy and Regional Material Flow Management
- Regional Material Flow Management

“Studying in IMAT has allowed me to discover, develop, and enhance my own potential. Due to the variety of lecturers from academic, governmental, and business backgrounds as well as the cross-cultural experiences that APU in Japan and IfaS in Germany offer, I have gained confidence in international cooperation, broadened my horizons, and nurtured my passion in this innovative and emerging field of study.”

Ulrike Kirschnick (Germany)
International Material Flow Management Student



TOURISM AND HOSPITALITY (TH)

M. SC. INTERNATIONAL COOPERATION POLICY



M. Kazem Vafadari, Ph.D., Associate Professor and Division Head (Iran)

Degree: Post-Doctoral, Environmental Economics (Kanazawa University), Ph.D. in Asia Pacific Studies (Ritsumeikan Asia Pacific University, Japan), M.A in Theoretical Economics (ISU, Iran)

Research Fields: Cultural Heritage Management, Ecotourism, Agriculture Heritage Tourism, Community Based Tourism and Rural Tourism

“Tourism destinations vary greatly from urban to rural settings and from artificial structures to remote locations in nature. This diversity results in demand for knowledge in various subfields of tourism and related skills. Such subfields include natural environment studies, human resource management, economics, and socio-cultural issues, knowledge of which assists our graduates in contributing to sustainable tourist destinations based on available resources. Today, tourism and hospitality are among the top grossing global industries, and attract individuals from both academia and the business world in order to manage the tourism industry and its socio-cultural, economic, and environmental impacts.”

DIVISION OVERVIEW

Tourism is a fast growing economic sector that transforms societies and communities in the Asia Pacific region. The Tourism and Hospitality (TH) division looks at various aspects of mass and alternative tourism and the economic, social, cultural, and environmental impacts on societies and communities. The division also studies the theory and practice of hospitality management as it relates to the tourism, service, health, and welfare industries. The knowledge and academic/professional skills obtained from our division will be useful for a wide variety of employment opportunities in government service, international organizations, and private corporations, as well as for further study.

DIVISION SUBJECTS

- Tourism Economics
- Cultural and Heritage Tourism
- Environmental Tourism
- Community Based Tourism
- Health and Wellness Tourism
- Tourism Policy and Planning
- Special Studies (Tourism and Hospitality)

FACULTY AND THEIR RESEARCH FIELDS

Timothy Lee, Ph.D., Professor

Health-Oriented Tourism, Cultural Heritage Tourism, Tourism Development which Incorporates East Asian Standards, Festival and Mega Events, Gaming Industry

Hiroshi Todoroki, Ph.D., Professor

Geography, Area Studies, Human Geography

Yukio Yotsumoto, Ph.D., Professor

Sociology, Tourism

Thanh Huong Bui, Ph.D., Associate Professor

Human Geography, Tourism Psychology, Tourism Development and Cultural Heritage Conservation, Tourism Management

“Joining the Tourism and Hospitality division at APU was a significant milestone in my career which created immense opportunities to learn and interact with different cultures and environments, while developing social interaction and international communication skills. The courses, field studies, and internships the program provided have enhanced my knowledge and skills in developing policy, and I now believe I can contribute to developing sustainable tourism in my country.”

Ella Lynthia Simata (Solomon Islands)

Tourism and Hospitality Division Student

Pacific Leaders’ Educational Assistance for Development of State (Pacific LEADS) Scholarship Recipient



DEVELOPMENT ECONOMICS (DE)

M. SC. INTERNATIONAL COOPERATION POLICY



Kaoru Natsuda, Ph.D., Professor and Division Head (Japan)

Degree: Ph.D. in Economics (The University of Sydney, Australia), M.A. in International Development Studies (The University of Bradford, UK)

Research Fields: International Development Studies, International Political Economy, Economic Policy, Industrial Development, Rural and Community Development, Automotive Industry, Apparel Industry

“The Development Economics division provides our students with high quality academic training, focusing on contemporary socio-economic issues of less advanced countries in the perspective of development theories, policies, and practical approaches in order to create a sustainable society. Our faculty members from various professional backgrounds, including the World Bank, JICA, NGOs, the private sector, and academia, support our students to cultivate new knowledge, experiences, and ideas for development in the future.”

DIVISION OVERVIEW

The Development Economics (DE) division is aimed at those who are interested in the socio-economic issues of the developing world. Study in this division enables students to improve their critical and analytical skills in many areas of development economics, including industrial development, social development, political development, rural development, and poverty alleviation. Students are also able to enhance their professional and practical skills related to international development. This division also aims to enhance the development of research skills in this field for those wishing to pursue further study. The knowledge and skills obtained will provide a wide variety of employment opportunities in international organizations, national and local governments, international development agencies, NGOs, and development consultancy firms.

FACULTY AND THEIR RESEARCH FIELDS

Sangho Kim, Ph.D., Professor

Theoretical Economics, Econometrics, Applied Economics, Economic Policy

Kozo Otsuka, Ph.D., Associate Professor

Applied Economics, Innovation and Productivity

DIVISION SUBJECTS

- Development Economics
- Macroeconomics
- Development Finance
- Comparative Economic Development
- Microeconomics
- Community Development
- Special Studies (Development Economics)

“At APU I was given the opportunity to experience the intricacies of enriching cultures with unique people from all parts of the world. The knowledge and skills I gained from interacting with many different people allowed me to expand my own range of thought. As a result, I was able to work more effectively as I organized and implemented social programs, workshops, and awareness campaigns through my local government after graduating.”

Mirna G. De La Portilla F. (Mexico, Graduated in 2013)

Consultant at Servicios, Productos Industriales y Construcción, Mexico



CURRICULUM

GRADUATE SCHOOL OF ASIA PACIFIC STUDIES (GSA)

A minimum of thirty-two credits is required for program completion. All subjects in the chart below are awarded two credits upon successful completion. Basic Japanese language subjects are available for those who are interested in studying Japanese but do not fulfill any credit requirements.

COURSE NAMES AND SEMESTER DISTRIBUTION				
LECTURE SUBJECTS	First Year		Second Year	
	1st Semester	2nd Semester	3rd Semester	4th Semester
	Analytical Foundation Subjects (4 credits)	<ul style="list-style-type: none">Research Methods and Academic WritingInformation Resources and Data Analysis		
	Core Subjects on the Asia Pacific Region (4 credits or more)	<ul style="list-style-type: none">Public Health in the Asia PacificTourism in the Asia PacificPolitics and Economics in the Asia PacificSocial and Cultural Processes in the Asia PacificEnvironment and Sustainable Development in the Asia Pacific		
	Major Subjects (10 credits or more)	IR <ul style="list-style-type: none">Regionalism and GlobalizationInternational LawInternational Political EconomyConflict Resolution	<ul style="list-style-type: none">Comparative Politics and GovernmentInternational SecuritySpecial Studies (International Relations)	
		SC <ul style="list-style-type: none">Changing Social LandscapesMedia and CommunicationMigration and Trans-nationalismCultural Change	<ul style="list-style-type: none">Social Organizations and InstitutionsSociology of Everyday LifeSpecial Studies (Society and Culture)	
		DE <ul style="list-style-type: none">Development EconomicsMacroeconomicsDevelopment FinanceComparative Economic Development	<ul style="list-style-type: none">MicroeconomicsCommunity DevelopmentSpecial Studies (Development Economics)	
		IPA <ul style="list-style-type: none">Disaster Relief and RehabilitationProject ManagementInternational OrganizationsPlanning and Evaluation	<ul style="list-style-type: none">International Public AdministrationCommunity DevelopmentSpecial Studies (International Public Administration)	
		PHM <ul style="list-style-type: none">Environmental HealthBiostatisticsHealthcare EconomicsPublic Health Essentials	<ul style="list-style-type: none">EpidemiologyBioinformaticsSpecial Studies (Public Health Management)	
		SS <ul style="list-style-type: none">Environment and Natural Resources ConservationUrban SustainabilityIndustrial Ecology	<ul style="list-style-type: none">Environmental EconomicsAdvanced Environmental GeosciencesEnvironmental Policy, Law and AdministrationSpecial Studies (Sustainability Science)	
		TH <ul style="list-style-type: none">Tourism EconomicsCultural and Heritage TourismEnvironmental TourismCommunity Based Tourism	<ul style="list-style-type: none">Health and Wellness TourismTourism Policy and PlanningSpecial Studies (Tourism and Hospitality)	
		Core Related Subjects <ul style="list-style-type: none">Decision Making Under UncertaintyHospitality ManagementInformation Technology and Operations ManagementProduct Development Strategy	<ul style="list-style-type: none">Marketing StrategyMarketing ResearchManagement Information SystemsDatabase ManagementAdvanced Data Analysis and Statistics	
	Seminars (4 credits or more)	<ul style="list-style-type: none">Research Project I	<ul style="list-style-type: none">Research Project II	<ul style="list-style-type: none">Research Project IIIFinal Research Project

PH.D. ASIA PACIFIC STUDIES

DOCTORAL PROGRAM

DOCTORAL PROGRAM OVERVIEW

The developing world is in great need of internationally-minded individuals possessing specialized knowledge and skills. Therefore, it is becoming increasingly common for international aid organizations to enlist the professional guidance of doctoral graduates. The doctoral program aims to produce independent individuals capable of conducting high-level research. This involves gaining expertise in theoretical and empirical approaches for investigation, acquiring in-depth knowledge of the Asia Pacific region, collecting and analyzing data, and drawing practical solutions for complicated issues in a comprehensive and integrative manner. Alumni of this program become distinguished leaders and take on prominent roles in advanced institutions for research and higher education around the world.

ASIA PACIFIC STUDIES

Degree: Doctor of Philosophy in Asia Pacific Studies

Enrollment Semesters: April, September

Program Duration: 3 years*

Yearly Intake: 10 students

Total Tuition: 4,200,000 JPY

*Accelerated completion in 2 years may be possible upon further examination after enrollment. The total tuition for the program will not change even if you complete your degree before the standard period of completion.

COURSE STRUCTURE AND CONTENT

Completion of the doctoral program requires fulfillment of doctoral coursework in addition to submission and approval of a final dissertation. The dissertation should integrate the results of in-depth investigation into Asia Pacific issues and incorporate individual findings that outline strategic, policy-oriented, and practical solutions to issues arising from current developments in the region. APU provides support for doctoral students conducting field research for their dissertations. Research supervision can be provided in areas such as diversity and integration, environment and development, international political economy, and tourism development.

PH.D. CURRICULUM STRUCTURE

	Lecture Subjects
1st Year	Seminars, Research Paper (arranged by supervisor)
2nd Year	Seminars, Presentations, Tutorials, Research Paper (arranged by supervisor)
3rd Year	Seminars, Tutorials (arranged by supervisor)

“Getting my doctorate at APU allowed me to conduct field work both within Japan and throughout Southeast Asia. This research that culminated in my dissertation also lead to additional peer-reviewed publications and my own book. I was fortunate to also work with my supervisor on JICA international development projects, which gave me practical skills in training, evaluation, and program design needed for my career. This experience helped me learn about emergent leadership and gain the global perspective necessary to start my own evaluation and organization development consultancy.”

Dr. Cindy Lyn Banyai (USA, Graduated in 2010)

Founder and Principal of Banyai Evaluation & Consulting, LLC

Adjunct Faculty, Department of Political Science and Public Administration at Florida Gulf Coast University, USA



FACULTY AND THEIR RESEARCH FIELDS

Nader Ghotbi, Ph.D., Professor

Applied Health Sciences, Philosophy/Ethics, Civil Law, Clinical Psychology and Public Hygiene Studies/Health Science

Hary Gunarto, Ph.D., Professor

Asia Pacific Studies (eSociety), Education, Digital Media and Tourism

Timothy Lee, Ph.D., Professor

Health-Oriented Tourism, Cultural Heritage Tourism, Tourism Development which Incorporates East Asian Standards, Festival and Mega Events, Gaming Industry

Yan Li, Ph.D., Professor

Environmental Policy, City Planning, Regional Planning, Traffic Engineering, Social System Engineering

Serik Meirmanov, Ph.D., Professor

General Life Science, Social Psychology, Human Genetics, Human Pathology, Public Hygiene Studies/Health Science

Kaoru Natsuda, Ph.D., Professor

International Development Studies, International Political Economy, Economic Policy, Industrial Development, Rural and Community Development, Automotive Industry, Apparel Industry

Davar Pishva, Ph.D., Professor

Environmentally Sound Technologies (ESTs), Simulation and Modeling (SaM), Decision Science (DS)

Joseph Progler, Ph.D., Professor

Cultural History, Education, Media Studies

Robert A.C. Salazar, Ph.D., Professor

Sociology-Anthropology, Social Organizations, Social Institutions and Social Movements, Social Impact Assessment and Evaluation, Southeast Asia

Yoichiro Sato, Ph.D., Professor

International Relations and Foreign Policy (Asia-Pacific), Comparative Politics (Southeast Asia), Maritime Security

Yasushi Suzuki, Ph.D., Professor

Fiscal Studies/Finance Theory, Theoretical Economics, Institutional Economics, Political Economy

Hiroshi Todoroki, Ph.D., Professor

Geography, Area Studies, Human Geography

Hidetaka Yoshimatsu, Ph.D., Professor

International Relations, International Political Economy, Regional Studies (East Asia)

Kaori Yoshida, Ph.D., Professor

Media Studies (Representation Politics: Gender, Ethnicity, Nation), Cultural Studies, Popular Culture, Comparative Culture Studies

Yukio Yotsumoto, Ph.D., Professor

Sociology, Tourism

Thomas Edward Jones, Ph.D., Associate Professor

Environmental Policy, Nature-Based Tourism, Protected Areas, Regional Development

Steven B. Rothman, Ph.D., Associate Professor

International Relations Theory, International Policy Making, International Environmental Policy, Subject Pedagogy

M. Kazem Vafadari, Ph.D., Associate Professor

Tourism, Hospitality Marketing, Human Geography, Cultural and Environmental Studies, Folklore Studies, Agricultural Heritage Tourism

RESEARCH



APU is involved in a range of research projects in accordance with the needs of international society and the Japanese national research policy.

RITSUMEIKAN CENTER FOR ASIA PACIFIC STUDIES (RCAPS)

RCAPS was established in 1996 with a mission to promote and foster research into the multi-faceted developments and challenges that face the Asia Pacific region in the 21st century. It provides valuable opportunities for research activities by sponsoring annual conferences and coordinating seminars throughout the year.

ASIA PACIFIC CONFERENCE (AP CONFERENCE)

The AP Conference is an international academic conference held once a year at APU. Researchers and students from around the world participate to present their research and academic perspectives. In 2017, approximately 330 presenters and 500 participants from 21 countries gathered on APU's campus for the conference.

ACADEMIC JOURNALS

- The RCAPS Journal is a non-refereed academic journal. The editorial board conducts screening of all submissions. It is open to graduate school students.
- RCAPS Working Paper Series/DOJO is an online series in which students/young researchers can publish their papers with comments by senior researchers for free.

SUPPORT FOR GRADUATE SCHOOL STUDENTS

RCAPS provides financial subsidies for graduate school students to support them in their research endeavors.

Master's Field Research Support Subsidy

Master's students may receive up to 75,000 JPY once in either their second or third semester for travel expenses (transportation and accommodation fees) incurred while undertaking field research or presenting a paper at academic conferences.

Ph.D. Research Support Subsidy

Ph.D. students may receive this subsidy for various research activities such as participating in conference presentations, field research, academic programs or publishing papers in an academic journal. They may receive up to 100,000 JPY a year.

SEMINARS

- There are many seminars to support students and researchers at APU.
- RCAPS Onigiri Seminars invite speakers from outside APU to enhance network building and information sharing in Asia Pacific Studies.
 - Current Research Seminars enable APU faculty members to present their latest research.

For more information, please refer to the website below:
<http://www.apu.ac.jp/rcaps>



Ritsumeikan Center for Asia Pacific Studies



CAREER PATHWAYS

GLOBAL OPPORTUNITIES

Students have access to and support from a worldwide network which consists of international heads of state, ambassadors, and industry leaders (APU Advisory Committee), distinguished researchers from around the world (Academic Advisors), and institutions associated with APU's faculty members. This network also includes APU alumni who are spread across the world working in an array of fields and industries. Utilizing this network is indispensable for our students' careers.

Numerous seminars, workshops, and presentations by professionals working in the field today give students a clear picture of the kind of career options available to them, the current skills being sought for by employers, and the type of work that suits them best. Both our faculty and our students also provide various consultation services to local industries and have the opportunity to interact with executives at the front lines of change in their respective industries.

Proficiency in Japanese language is often a prerequisite for those seeking employment in Japan.

SAMPLE CAREERS OF APU GRADUATES

GRADUATE SCHOOL OF MANAGEMENT

Companies

- BANDAI NAMCO Games Inc., Japan
- ESD Technology Co., Ltd., Thailand
- Ecopetrol S. A., Colombia
- ExxonMobil Corporation, Thailand
- GUCCI Group, Japan
- Hikari Kikai Seisakusho Co., Ltd., Japan
- KPMG, Japan
- Kyosan Electric Manufacturing Co. Ltd., Japan
- LEOC Co. Ltd., Japan
- La Casa Del Jade, Guatemala
- Lenovo Group, Ltd., China
- Marsh Japan, Inc., Japan
- NCH Corporation, USA
- NTT Docomo, Inc., Japan

- National Bank of Ethiopia
- Nippon Steel and Sumikin Bussan India Pvt. Ltd., India
- Nissan Motor Co. Ltd., Japan
- Oita Bank, Japan
- POSCO-America, Mexico
- Procter and Gamble Co., Poland
- Siam Cement Group, Thailand
- Skylight Consulting, Inc., Japan
- Tata Consultancy Services Japan
- Unilever, Indonesia
- Viet Dragon Securities Corporation, Viet Nam
- Voyagin, Japan

Government Offices

- Andhra Pradesh State Department, India
- Consulate General of the Socialist Republic of Viet Nam in Fukuoka, Japan
- Ministry of Finance, Indonesia
- Ministry of Industry and Trade, Viet Nam
- Ministry of Mines and Petroleum, Afghanistan
- Ministry of Transport, Kenya
- State Customs Service, Kyrgyz Republic

Organizations

- Fobang Foundation, Cameroon
- World Wide Fund for Nature, Zimbabwe

GRADUATE SCHOOL OF ASIA PACIFIC STUDIES

Companies

- Bosch Corporation, Japan
- Cotopaxi Energy Limited, India
- EATALY Asia Pacific, Japan
- Fraunhofer IGB, Germany
- Fujitsu Marketing Ltd., Japan
- H.I.S. Co., Ltd., Japan
- Hays Specialist Recruitment Japan K.K., Japan
- Industrial Decisions Inc., Japan
- JTB Pte Ltd., Singapore, Japan
- KT Accounting Co., Ltd., Viet Nam
- KTC Holdings, Japan
- NEC Corporation, Japan
- National Park Resorts of Japan, KYUKAMURA, Japan
- TSUBASA Corporation, Japan

Government Offices

- Chinese Academy of Sciences
- Department of Foreign Affairs, The Philippines
- Korea Development Institute, Korea
- Ministry of Economic Development, Tajikistan
- Ministry of Education, Myanmar
- Ministry of Energy and Water, Afghanistan
- Ministry of Finance and Planning, Sri Lanka
- Ministry of Foreign Affairs, China
- Ministry of Industry and Commerce, Laos
- National Tourism Administration, China
- The Embassy of Angola, Japan
- The Embassy of Israel, Japan
- The Embassy of Mexico, Japan

Organizations

- Asia Development Bank, The Philippines
- Medecins Sans Frontieres, Hong Kong
- NHK (Japan Broadcasting Corporation), Japan
- National Medical Research Institute, Mongolia
- The Sino-Japan Friendship Center for Environmental Protection, China
- UNICEF Cambodia Office
- Uganda Network of AIDS Service Organizations

Academic Careers

- Jahangirnagar University, Bangladesh
- National College of Tourism, Tanzania
- Kabul Medical University, Afghanistan
- Mindanao International College, The Philippines
- National Taiwan University
- Health Sciences University of Mongolia

STUDENT LIFE AND FACILITIES



FACILITIES

APU's classrooms are equipped with the latest audiovisual and computer technology, enabling our students to take part in conferences and seminars occurring in other parts of the world in real time. The library, part of the Ritsumeikan Network, allows students to utilize over 2.3 million books and publications. Within the Faculty Office Building, graduate students have their own lounge, lockers, and computer rooms. Furthermore, with access to the Faculty Office Building, students can easily consult with their supervisors during office hours.

STUDENT LIFE

Student life at APU is an international experience like no other. The multicultural diversity of the campus provides a unique environment for students to improve their communication skills and expand their networks. The Student Office at APU provides a range of services for students in terms of club activities, local exchange, homestay programs, accommodations, and visa renewal. A health clinic and counseling rooms are also available should students encounter any problems or need advice. APU caters to the needs of students from all over the world by providing areas such as "The Quiet Space," a room on campus for meditation, contemplation, introspection, prayer, and other forms of calm, quiet reflection, as well as by offering a wide variety of food in the cafeteria.

LIVING COSTS

The average monthly living expenses for students at APU vary depending on lifestyle, but usually range from 70,000 to 100,000 JPY including accommodation. Students can purchase reasonably priced meals at our cafeteria, which offers an array of Japanese and international cuisine.

EVENTS ON CAMPUS

The campus becomes very lively during events such as Multicultural Weeks and the annual cultural festival called Tenkusai. These events are organized to showcase the multitude of languages, cultures, and talents of our student body through food, dance, film, music, and various types of performances.

ACCOMMODATION

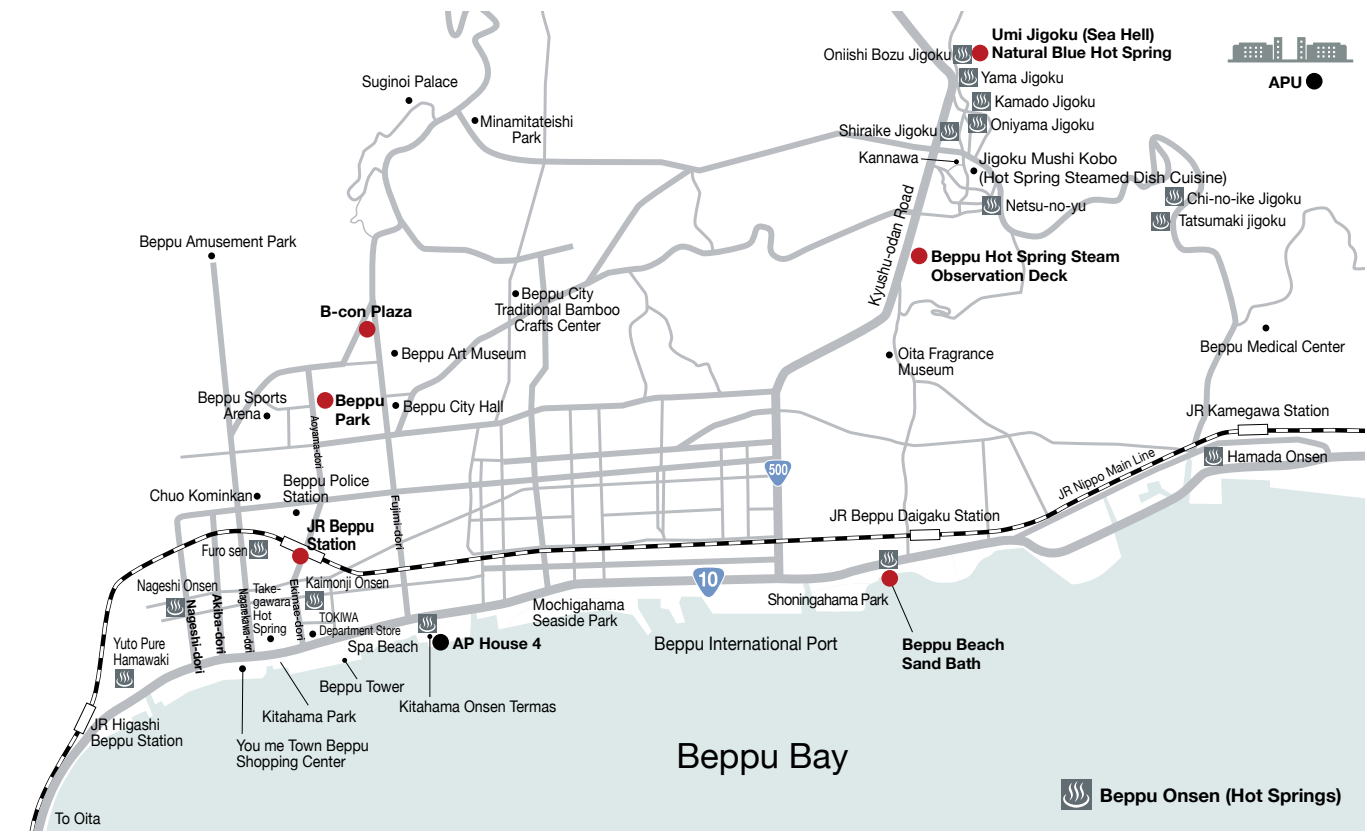
All graduate students are entitled to a room in one of APU's student housing facilities, AP House 4, which will help them adapt to their new life in Japan and to concentrate on their studies. All rooms are equipped with basic facilities, including internet access. AP House 4 is located off-campus in downtown Beppu, from which it takes about thirty minutes to reach campus by bus. If students wish to live in different off-campus housing or if they are coming with their family, they can find other affordable options, as Beppu is considerably less expensive than other Japanese cities for private apartments and shared student housing. Students can also get assistance in locating and renting accommodations from Creotech, a university-affiliated company.



BEPPU CITY

APU is located in Beppu, a small city of 120,000 inhabitants located on the coast of Kyushu, the southernmost major island in the Japanese archipelago. The city is famous for its abundance of onsen (hot spring baths), and 140,000 tons of water gush daily from over 2,000 sources, second only to Yellowstone National Park in the United States. Enclosed by beautiful mountains and the sparkling Beppu Bay, the city's historic backstreets and billowing steam clouds give it a peaceful old-town charm, and it remains a popular tourist destination for Japanese and international tourists alike. Beppu is also a mere ten minute train ride from Oita City, a vibrant city of 480,000, which hosted for four matches of the 2002 FIFA® World Cup Korea/Japan™ and will be a venue for the upcoming Rugby World Cup Japan 2019™.

PLACES OF INTEREST



APPLY TO APU

Students may enroll at APU in either April or September. Multiple application periods are available for enrollment each semester depending on the program you are applying to, scholarship opportunities, and where you live at the time of application. Not all programs begin from each semester, so please be sure to confirm the enrollment periods before applying. Applications can be made by submitting the online APU Graduate School Application and sending hard copies of required documents to APU via post. Please refer to our website for more details: <http://r.apu.jp/applygrad>

ADMISSIONS REQUIREMENTS

1. A bachelor's degree or equivalent
2. An English proficiency test score for non-native English speakers
3. (MBA applicants only) At least three years of full time work experience or GMAT/GRE scores

Minimum English Proficiency Requirement

TOEFL iBT® Test	TOEFL® PBT Test	IELTS	TOEIC® L&R Test *	PTE Academic	Cambridge English Language Assessment
80	550	6.0	780	50	FCE Grade B

TOEIC®, TOEFL® are registered trademarks of Educational Testing Service (ETS). This publication is not endorsed or approved by ETS.

* L&R is an abbreviation for LISTENING AND READING

DOCTORAL PROGRAM APPLICATIONS

Applicants for the doctoral program must receive a signed "Supervisor Confirmation Letter" from their prospective APU faculty advisor before submitting their application. Please visit our website to confirm the procedures for applying to the doctoral program: <https://r.apu.jp/grad>

APPLICATION PERIODS

April 2019 Enrollment

August	September	October	November
Aug 1, 2018 (Wed)	Sep 26, 2018 (Wed)	Sep 27, 2018 (Thu) Oct 24, 2018 (Wed)	Oct 25, 2018 (Thu) Nov 28, 2018 (Wed)
● MEXT Scholarship (Top Global University Project) Overseas Applicants		● General Applications ● Ph.D. Applications Overseas Applicants Domestic/Internal Applicants	● General Applications ● Ph.D. Applications Domestic Applicants

September 2019 Enrollment

October	November	December	January	February	March	April	May
Oct 25, 2018 (Thu)- Nov 28, 2018 (Wed)	Nov 29, 2018 (Thu)	Feb 27, 2019 (Wed)	Feb 28, 2019 (Thu)- Apr 3, 2019 (Wed)	Feb 28, 2019 (Thu)- Apr 17, 2019 (Wed)	Apr 18, 2019 (Thu)- May 22, 2019 (Wed)		
● MEXT Scholarship (Top Global University Project) ● MEXT Scholarship (University Recommendation) Overseas Applicants	● Asia Development Bank-Japan Scholarship Program (ADB-JSP) ● Joint Japan/World Bank Graduate Scholarship Program (JJ/WBGSP) Overseas Applicants		● General Applications ● Ph.D. Applications Overseas Applicants Domestic Applicants ● IMAT Program Applications Domestic Applicants	● General Applications ● Ph.D. Applications Overseas Applicants Domestic Applicants ● IMAT Program Applications Overseas Applicants	● General Applications ● Ph.D. Applications Domestic Applicants		

SCHOLARSHIPS / AY2018 ACADEMIC CALENDAR

At APU, outstanding students have opportunities to fund their study under a range of different scholarships. These scholarships include the APU Tuition Reduction Scholarship and full scholarships sponsored by various organizations such as the World Bank, the Asian Development Bank, and the Japanese Government.

APU TUITION REDUCTION SCHOLARSHIP

The APU Tuition Reduction Scholarship covers 30%, 50%, 65%, 80%, or 100% of your tuition until graduation. It is available to both Japanese nationals and international students. For more information about the Tuition Reduction Scholarship, please visit the following website: <http://r.apu.jp/gradtr>

EXTERNAL SCHOLARSHIPS

The following scholarships are available for 2019 enrollment applicants:

- MEXT Scholarship (Top Global University Project)
- MEXT Scholarship (University Recommendation)
- Joint Japan/World Bank Graduate Scholarship Program (JJ/WBGSP)
- Asian Development Bank-Japan Scholarship Program (ADB-JSP)

Please visit our website for more information concerning all available scholarships, including their eligibility and application requirements: <http://r.apu.jp/external>

AY2018 ACADEMIC CALENDAR

Spring Semester

Entrance Ceremony Apr 1, 2018	Start of Classes, First Quarter Apr 9, 2018
Start of Classes, Second Quarter Jun 4, 2018	Summer Session Classes Jul 29, 2018 – Aug 2, 2018
Start of Summer Break Aug 9, 2018	Graduation Ceremony Sep 14, 2018

Fall Semester

Entrance Ceremony Sep 21, 2018	Start of Classes, First Quarter Oct 3, 2018
Start of Classes, Second Quarter Nov 28, 2018	Winter Break Dec 22, 2018 – Jan 6, 2019
Winter Session Classes Feb 8, 2019 – Feb 12, 2019	Start of Spring Break Feb 17, 2019
Graduation Ceremony Mar 15, 2019	



CONTACT US

Ritsumeikan Asia Pacific University
Admissions Office (International)
1-1 Jumonjibaru, Beppu, Oita, 874-8577 Japan
Tel: +81-977-78-1119
<http://r.apu.jp/grad>
Email: apugrad@apu.ac.jp



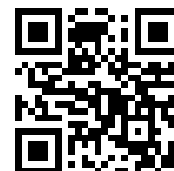
Ritsumeikan.APU



APUAdmissionsOffice



ritsumeikanapu



APU OVERSEAS OFFICES

CHINA

Ritsumeikan Liaison Office, (located in Shanghai Jiao Tong University)
D, 18F Sun Tong Infoport Plaza, No. 55, Huaihai West Rd.,
Shanghai City 200030, China
Tel: +86-21-6283-5104
Fax: +86-21-6283-5247
Email: apuchina@apu.ac.jp


INDONESIA

APU Indonesia Information Center
C/O MARQUEE, Mayapada Tower I,
11th Floor, Jl.Jend. Sudirman Kav. 28
Jakarta 12920, Indonesia
Tel: +62-21-5289 7328/7392
Email: apu-ina@apu.ac.jp
 [apuindonesiaoffice](https://www.facebook.com/apuindonesiaoffice)

KOREA

APU Korea Office
#608, Halla Classic Officetel 6th Floor,
23 Gangnam Daero 84 Gil,
Gangnam-gu, Seoul 135-934, Korea
Tel: +82-2-564-3425/3426
Fax: +82-2-564-3427
<http://www.ritsapu-kr.com>
Email: hello@ritsapu-kr.com

TAIWAN

APU Taiwan Office
C/O MIBC, F10F., NO.209, Sec. 1, Civic Blvd.,
Datong Dist., Taipei City 103, Taiwan
Tel: +886-2-2181-1666
Email: taipei@apu.ac.jp
 APUTW

THAILAND

APU Thailand Office
1015 Room, 10th Floor, Serm-Mit Tower, 159/16 Soi Asoke,
Sukhumvit 21 Road, Wattana, Bangkok 10110, Thailand
Tel: +66-2-665-7145
Email: thailand@apu.ac.jp

VIET NAM

APU Viet Nam Office
Hanoi:
A31D11, Alley 66/1, Lane 84,
Tran Thai Tong Street, Cau Giay District, Viet Nam
Tel: +84-24-32-000-619
<http://vietnam.apu.ac.jp>
Email: vietnam@apu.ac.jp
 [apuvietnam](https://www.facebook.com/apuvietnam)

Ho Chi Minh City:
238/2B Nguyen Thi Minh Khai Street,
Ward 6, District 3,
Ho Chi Minh City, Viet Nam
Tel: +84-28-39-306-432
Email: vietnam@apu.ac.jp

APU OVERSEAS REPRESENTATIVES

INDIA

Mr. Vishnu Vankayala
4th Floor, Vansh Building, AP-801, 1st Street, G-Block,
10th Main Road, Anna Nagar, Chennai-040, Tamil Nadu, India
Tel: +91-44-4352-2078
Email: s-india@apu.ac.jp

SRI LANKA

Mr. Harin Gunawardena
183/1, Nawala Road, Nugegoda, Sri Lanka
Tel: +94-714251314
Email: harin@apu.ac.jp



AACSB
ACCREDITED



TOP GLOBAL
UNIVERSITY
JAPAN