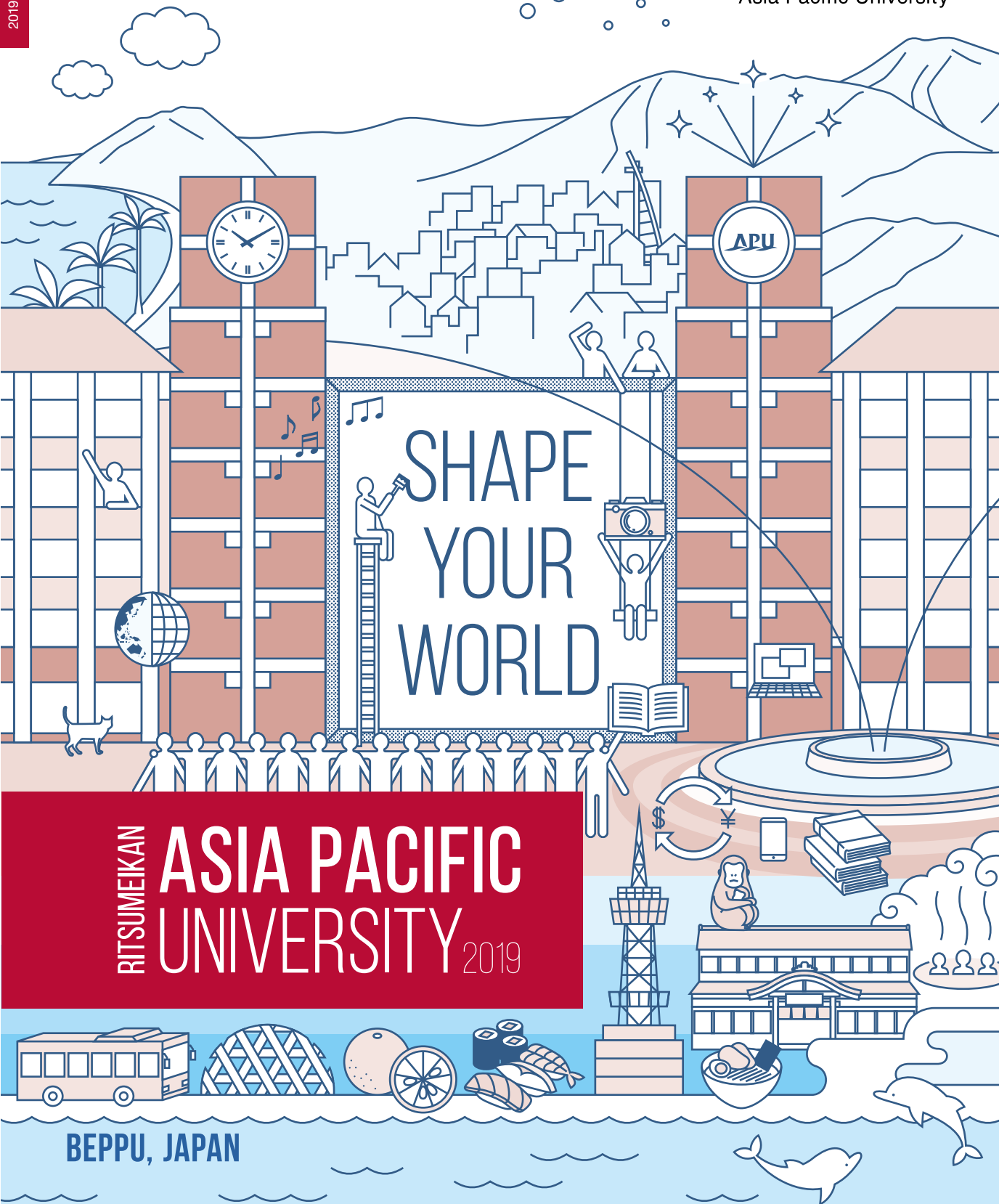


Shape your world



Ritsumeikan
Asia Pacific University



RITSUMEIKAN
ASIA PACIFIC
UNIVERSITY 2019

BEPPU, JAPAN

An aerial photograph showing the Ritsumeikan Asia Pacific University (APU) campus in the foreground, featuring several large red-brick buildings, green lawns, and sports fields. The campus is situated on a hillside overlooking a vast cityscape and a body of water in the distance. The sky is clear and blue.

2	SHAPE YOUR WORLD
3	APU BY THE NUMBERS
5	ACADEMICS
7	COLLEGE OF INTERNATIONAL MANAGEMENT
9	COLLEGE OF ASIA PACIFIC STUDIES
11	SUBJECT LIST
13	EXCHANGE PROGRAMS
15	EXTRACURRICULAR ACTIVITIES
17	STUDENT LIFE
21	CAREERS
23	ALUMNI JOURNEYS
25	ADMISSIONS GUIDE

SHAPE YOUR WORLD

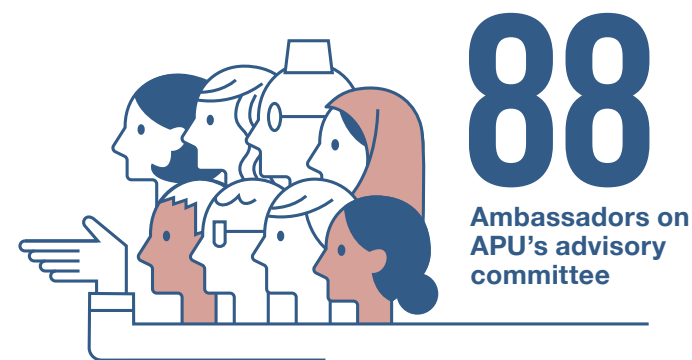
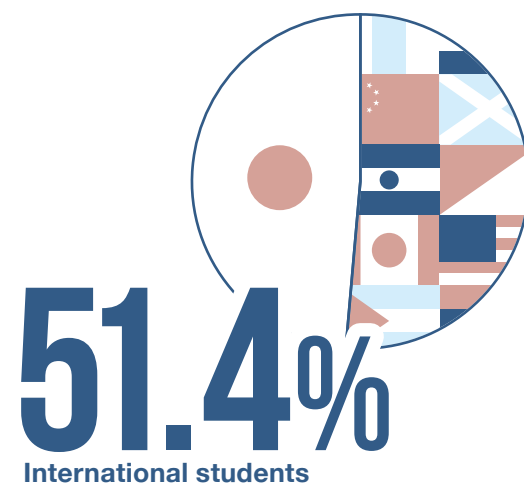
FREEDOM, PEACE, HUMANITY.
INTERNATIONAL MUTUAL UNDERSTANDING.
THE FUTURE SHAPE OF THE ASIA PACIFIC REGION.

Ritsumeikan Asia Pacific University (APU) first opened its doors in 2000 with these ideals as its foundation. What emerged was an entirely new multicultural learning environment with the aim of creating global leaders across all fields and industries. In these past eighteen years, this goal has not only been reached but exceeded as thousands of students from over one hundred forty countries have come together to learn intercultural coexistence, responsible business leadership, and sustainable development.

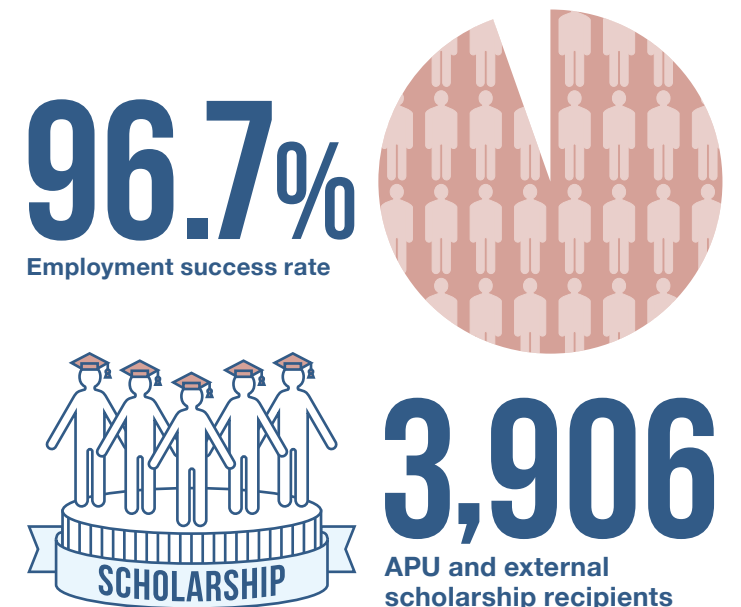
With this well-rounded base of global knowledge, APU students and graduates are actively finding solutions to the issues our world is facing.

**Your path to shape your own world and
the world around you starts at APU.**

APU BY THE NUMBERS



Selected by the Government of Japan in 2014 as one of the country's
"TOP GLOBAL UNIVERSITIES"



EDUCATION THAT INSPIRES YOU

**Maheshwari
Kalyanasundaram (India)**
APS, Third Year Student

I chose APU because I wanted a unique education, and I couldn't find exactly what I wanted in my home country. Here, I have freedom to shape my university life and work towards my goal of serving society. Surrounded by new friends from places I have never heard of before, I am constantly inspired to keep pushing the borders of my comfort zone. I have met writers and dreamers, people with noble visions and intense passions. While communicating in English and Japanese, we inspire each other as we share knowledge, skills, and cultures.



CURIOUS, ADVENTUROUS, ENERGETIC, CREATIVE, DEDICATED...

These are some of the words which describe APU students. You will find they are passionate about being involved, about learning new languages, understanding new cultures, exploring global business, and finding innovative solutions to issues around the world. We invite you to utilize this completely unique environment to get ready to make a positive impact on a global level.

BEYOND THE TRADITIONAL CLASSROOM SETTING

Learning at APU is not simply a matter of reading books and attending lectures. APU's interactive style of education creates daily opportunities for lively discussions and group work with students of different cultural and socioeconomic backgrounds in a variety of classroom settings. We invite you to take your knowledge, turn it into action, and make an impact out in the world that exists beyond the classroom. From field studies, exchange programs, conferences, and academic competitions, to community outreach and internships, get involved in the vast range of opportunities that await you at APU.

BECOME MULTILINGUAL

Knowing more than one language is not a goal for our students—it's a requirement. Studying your degree in English means you will also be required to learn Japanese and vice-versa. Want to add another language to your repertoire? APU offers additional language courses in the Asia Pacific languages of Chinese, Korean, Malay/Indonesian, Spanish, Thai, and Vietnamese. Acquire another language and you will have a significant advantage in your future career whether it is based in your home country, Japan, or another location.

ENGAGE WITH DEDICATED FACULTY

Highly qualified faculty from twenty-four countries, many of whom have real-world experience, bring a new dimension of practical learning to the classroom. Learn about issues affecting your world from esteemed practitioners who have honed their skills at the cutting edge of innovation over decades.

COLLEGE



AREAS OF STUDY

COLLEGE OF INTERNATIONAL MANAGEMENT (APM)
Bachelor of Business Administration (BBA)

- Innovation and Economics
- Marketing
- Strategic Management and Organization
- Accounting and Finance

COLLEGE OF ASIA PACIFIC STUDIES (APS)
Bachelor of Social Science (BSocSc)

- Environment and Development
- Hospitality and Tourism
- International Relations and Peace Studies
- Culture, Society and Media

You need 124 academic credits in order to graduate. Average time until completion is four years. There are also options to graduate in three or three and a half years.

COLLEGE of INTERNATIONAL MANAGEMENT [APM]

BACHELOR OF BUSINESS ADMINISTRATION (BBA)

Cultivate your own global perspectives, business ethics, and problem-solving skills in APM to join the next generation of international business leaders. As a student in APM, you will begin your studies tackling core management concepts and then branch out into your specialized field of interest.

The College of International Management is accredited by the Association to Advance Collegiate Schools of Business (AACSB International), which is widely regarded as the highest level of accreditation for business schools worldwide.

AREAS OF STUDY

INNOVATION AND ECONOMICS

Learn about what generates innovation, how production is managed, and the underlying economic foundations of these concepts. The lectures are geared towards those wishing to contribute to global development through business or policy-making.

MARKETING

The theories and methods needed to successfully provide goods and services to the global market is the focus of courses in the marketing area of study. You will learn to identify the most effective method to link production to the final consumer and determine how much to provide at what cost.

STRATEGIC MANAGEMENT AND ORGANIZATION

These classes focus on how to set goals, establish principles, and develop methods for an organization so that it meets the challenges of evolving social needs. If you aim to become an entrepreneur or plan to take over your family business, this area of study is ideal for you.

ACCOUNTING AND FINANCE

The health of corporations is evaluated by the ebb and flow of money, which is known as accounting, while finance is the field concerned with raising and managing the funds necessary for corporate activities. Classes in this area of study enable you to gain a solid foundation in these demanding fields and exercise your knowledge in an international context.

Assistant Professor Pajaree Ackaradejruangsri (Thailand)

Ph.D. (Asia Pacific Studies), Ritsumeikan Asia Pacific University

Problem-solving, critical thinking, and creativity are now among the top skills you need to pave the way to success in the business workforce. This means you must be able to come up with original ideas, figure out effective solutions to complex issues, and persuade others to support your visions. These skills are essential to navigate through the intricate business environment—an environment that keeps changing thanks to constant implementation of new technologies. There is no better training ground than APU to prepare you for such a work environment.

Studying in APM alongside students from a variety of economies, you will encounter different information, alternative approaches, and new ways of doing things, and you will be challenged to redesign your mindset as well as to develop negotiation and persuasion skills. You will also be inspired to grow to the point that you are completely comfortable with diversity, change, and innovation. In addition to acquiring a global standard of business knowledge that is available through our AACSB-accredited curriculum, you will have the APU community of faculty and friends to support you in applying your knowledge, experimenting with new ideas, and testing your strengths for the next influx of changes in society.



COLLEGE of ASIA PACIFIC STUDIES [APS]



BACHELOR OF SOCIAL SCIENCE (BSocSc)

In APS, we challenge you to tackle a vast array of global issues and develop new ways of thinking to face these obstacles head on. You will gain a broad understanding of the political systems, economies, societies, and cultures of the Asia Pacific while gathering relevant skills in language and information technology. Between your second and sixth semester, you will be able to choose an area of study to specialize in and embark on more in-depth studies and research. APS prepares you for a wide variety of careers in government, international organizations, media, the travel industry, and multinational corporations.

AREAS OF STUDY

ENVIRONMENT AND DEVELOPMENT

Profit-driven development has brought with it a raft of environmental and other issues, and sustainable development is an urgent issue for our times. Lectures in this area of study tackle the question of sustainable development in relation to policies and efforts to balance environmental conservation and economic development.

HOSPITALITY AND TOURISM

As cultural exchange and promotion of regional industries through tourism are vital to the development of the Asia Pacific region, this area of study explores multiple facets of tourism through the lenses of culture, society, and community. You will focus on the theory and practice of hospitality management as it relates to the tourism, health, service, and welfare industries.

INTERNATIONAL RELATIONS AND PEACE STUDIES

This area of study allows you to delve into the intricacies of conflict resolution and peace-building as well as cultivate the ability to deal with increasingly complex global issues. Your studies will draw from the three disciplines of international law, political science, and economics and help you gain the necessary critical thinking skills and a policy-oriented approach to succeed in the field.

CULTURE, SOCIETY AND MEDIA

This area of study enables you to analyze the societies, cultures, and values of the Asia Pacific to deepen your understanding of the issues this region faces. You will gain a global perspective, fundamental media skills, and the ability to view societal issues from several angles.

Associate Professor Steven B. Rothman (United States) Ph.D. (Politics), University of Oregon

With a diverse student body and faculty expertise spanning four areas of study, everyone in the College of Asia Pacific Studies is both a teacher and a learner. Across our cultural differences, diverse languages, and areas of specialization, faculty and students communicate with an openness and curiosity to expand one another's knowledge, skills, and life experiences. This depth of interaction creates a space of immeasurable cultural learning unavailable anywhere else, and is especially relevant for students of international relations, tourism, development, media, and cultural studies.

Our educational programs reach out beyond the classroom into numerous extracurricular activities in Japan and abroad. Such activities include field study programs, study abroad programs, and student-run educational clubs, and will provide you with a broader understanding and the tools for success. Graduating with an APS degree means you leave with a solid knowledge of your chosen field, the life skills for success, and a global group of friends and colleagues that last a lifetime.

SUBJECT LIST

This list consists of subjects for the 2017 academic year. Please note that this subject list may change for the 2019 academic year.

LIBERAL ARTS SUBJECTS

APM Bridge Program
APS Bridge Program
Bioethics
Career Design I • II • III • IV
Computer Literacy
Constitution of Japan
Culture and Society of the Asia Pacific
Data Mining
Database Systems
Economy of the Asia Pacific
Environmental Science
Geography of the Asia Pacific
Health Science
History of the Asia Pacific
Intercultural Fieldwork I • II
Internet Technology Integration
Internship
Introduction to Culture and Society
Introduction to Development Studies

Introduction to Economics
Introduction to Environmental Studies
Introduction to GIS
Introduction to Intercultural Communication
Introduction to International Relations
Introduction to Media Studies
Introduction to Peer Leader Training
Introduction to Political Science
Introduction to the Internet
Introduction to Tourism and Hospitality
Japanese Art of Flower Arrangement
Japanese Art of Tea Ceremony
Japanese Culture and Society
Japanese Economy
Japanese Geography
Japanese History
Languages of the Asia Pacific
Legal Studies
Logical Thinking and Framework

Media Production Lab
Multicultural Collaborative Workshop
Negotiation Skills
Overseas Learning Design
Peace, Humanity and Democracy
Peer Leader Training I • IIA • IIB
Programming
Psychology
Religions of the Asia Pacific
Special Lecture (ICT)
Special Lecture (Japanese Studies)
Special Lecture (Liberal Arts Subject)
Statistics
Studies of Multicultural Comparison
Study Skills and Academic Writing
Traditional Japanese Arts
Volunteer Activities

LANGUAGE EDUCATION SUBJECTS

Japanese Language Classes
Business Communication in Japanese A • B
Career Japanese
Japanese Course
(Foundation/Intermediate/Pre-Advanced/
Advanced)
Japanese for Lectures
Japanese Project A • B • C • D • E • F
Language and Culture in Japan
Language and Social Topics in Japan

English Language Classes
English Course
(Elementary/Pre-Intermediate/Intermediate/
Upper-Intermediate/Advanced)

English for Business Presentations
English for Business Writing
English for Discussion and Debate
English for Journalism
English Project 1 • 2
Extensive Reading in English of the Media

Asia Pacific Language Classes
Chinese I – IV
Korean I – IV
Malay/Indonesian I – IV
Spanish I – IV
Thai I – IV
Vietnamese I – IV

Specific Language Classes
English Proficiency Preparation Course I • II • III
Intensive Language Learning Overseas
Introduction to Asia Pacific Languages
Introduction to Official Languages of the United Nations I – French
Introduction to Official Languages of the United Nations II – Russian
Introduction to Official Languages of the United Nations III – Arabic
Japanese Language Teaching
Japanese Linguistics for Japanese Language Education
Special Lecture (Language Education Subject)
TESOL

CONNECTED BY LANGUAGE



Radoslav T. Tsvetkov (Bulgaria)
APM, Second Year Student

Learning a new language is a challenge for anyone who studies abroad, and Japanese is no exception. Before coming to APU, I studied some Japanese while participating in a short-term language exchange program in Osaka, so I was curious to see how my level would match the classes offered here. After taking the placement test during new student orientation, I was placed in Foundation II, which allowed me to build upon my basic Japanese abilities. During this past year, thanks to the intense Japanese language courses I've taken and always being surrounded by my Japanese friends outside class, I have noticed a rapid improvement in my Japanese skills. In fact, I now find I can easily converse with native Japanese speakers and read and write at an intermediate level, and I plan to continue my Japanese studies over the next two years. If becoming fluent in Japanese is a goal of yours, there is no better place than APU to achieve this.



APM SUBJECTS

Required Subjects
Accounting I
Advanced Mathematics
Business Ethics
Finance
Fundamental Mathematics
Global Management (Capstone)
Introduction to Management
Introduction to Marketing
Legal Strategy in Business
Management of Human Resources and Organizational Behavior
Production Management

Strategic Management & Organization (SMO)
Advanced Human Resource Management
Advanced Organizational Behavior
Brand Management
Entrepreneurship
Family Business Management
International Logistics
International Transactions
Service Management
Special Lecture in Strategic Management & Organization
Strategic Management
Supply Chain Management

Accounting & Finance (AF)
Accounting II
Advanced Accounting
Auditing
Corporate Finance
Cost Accounting
Financial Accounting I • II
Financial Market and Institutions
International Accounting
International Finance
Investment and Securities Analysis
Investment Strategy
Management Accounting
Special Lecture in Accounting
Special Lecture in Finance

Innovation & Economics (IE)
Asian Economy
Development Economics
Entrepreneurship
International Economics
International Political Economy
Macroeconomics
Microeconomics
Operations Research
Product Development
Special Lecture in Economics
Special Lecture in Innovation
Technology Management

Marketing (M)
Brand Management
Consumer Behavior
E-Commerce
International Logistics
International Marketing
Marketing Research
Product Development
Promotion and Sales Management
Service Management
Special Lecture in Marketing
Supply Chain Management

APM Common Subjects
APM Field Study
Business Case Analysis & Communication
Business Data Analysis
Business Internship
Field Research Project
Management Information Systems
Social Entrepreneurship
Special Lecture (Management)

Seminar Subjects
Major Seminar I • II
Research Seminar
Undergraduate Thesis

APS SUBJECTS

Core Subjects
Introduction to APS
Introduction to Area Studies

Environment & Development (ED)
Biodiversity
Community Based Tourism
Community Development
Conflict and Development
Development Economics
Development Policy
Development Sociology and Anthropology
Ecotourism
Environment and Society
Environmental Communication
Environmental Economics
Environmental Modeling and Analysis
Environmental Policy
Field Study for Environment and Development
GIS and Remote Sensing
Global Environmental Issues
Industrial Ecology
International Cooperation
International Economics
International Organizations
NPO/NGO Studies
Preliminary Seminar for Environment and Development
Politics of Development
Project Management in Development
Resource Management
Special Lecture in Environment and Development
Urban Environment and Development

Culture, Society & Media (CSM)
Cultural Anthropology
Cultural Studies
Education and Society
Ethnicity and the Nation State
Field Study for Culture, Society and Media
Gender Studies
Global History
Global Media and Conflict
Globalization and Law
Globalization and Regionalism
History of Japanese Foreign Relations
Identity and Politics
Language and Society

Media and Culture
Media and History
Media and Law
Media and Politics
Multiculturalism and Society
New Media and Society
NPO/NGO Studies
Preliminary Seminar for Culture, Society and Media
Religion and Belief
Social Psychology
Social Stratification
Social Theory
Sociology of Organizations
Special Lecture in Culture, Society and Media
The Humanities and Modernity
Transnational Sociology

Hospitality & Tourism (HT)
Advanced Human Resource Management
Advanced Organizational Behavior
Agri-heritage and Tourism
Community Based Tourism
Cultural Anthropology
Culture and History of Tourism
Destination Marketing and Management
Ecotourism
Event and Festival Management
Field Study for Tourism and Hospitality
Health and Wellness Tourism
Heritage Tourism
Hospitality Management
Hospitality Marketing
MICE Tourism Industry
Operations Research
Preliminary Seminar for Tourism and Hospitality
Project Management in Development
Resort Development
Sociology of Tourism
Special Lecture in Tourism and Hospitality
Tourism and Hospitality Law
Tourism and Social Media
Tourism Development and Planning
Tourism Economics
Travel Industry

International Relations & Peace Studies (IRP)
Comparative Political Economy of the Asia Pacific
Conflict and Development
Development Policy
Ethnicity and the Nation State
Field Study for International Relations and Peace Studies
Foreign Policy of Japan
Geo-Politics and Post Cold War Conflicts
Global Issues and Policies
Global Media and Conflict
Globalization and Law
Globalization and Regionalism
History of International Politics
History of Japanese Foreign Relations
Human Rights
Identity and Politics
International Conflict Resolution
International Cooperation
International Law
International Organizations
International Political Economy
International Relations in the Asia Pacific
International Relations Theory
Media and Politics
Peace Studies
Political Theory
Politics of Development
Preliminary Seminar for International Relations and Peace Studies
Regional Systems in the Asia Pacific
Special Lecture in International Relations and Peace Studies
Strategic Decision Making
Violence and Terrorism

APS Common Subjects A • B
APS Field Study
Area Studies
Field Research Project
Special Lecture (Asia Pacific Studies)

Seminar Subjects
Field Research Project
Graduation Research I • II
Introduction to Research Methods
Major Seminar I • II

BROADEN YOUR HORIZONS

THE WORLD AT YOUR FINGERTIPS

Build your international portfolio by joining an exchange program for a semester or a year at one of our international or Japanese partner universities. Choose from 146 exchange partners in 48 countries. If you are awarded an APU Tuition Reduction Scholarship, it will still remain valid during your time on an exchange program.

TWICE THE CHALLENGE, TWICE THE REWARD

The only thing better than getting a degree from one international university is getting two degrees from two international universities at the same time. This option is available to APS students by signing up for one of APU's dual degree programs with Kyung Hee University in Korea, Salzburg University of Applied Sciences in Austria, or St. Edward's University in the United States.



LIST OF PARTNER UNIVERSITIES

AFRICA

Botswana

University of Botswana

Kenya

United States International University-Africa

Morocco

Université Internationale de Rabat

ASIA

Azerbaijan

ADA University

Brunei

Universiti Brunei Darussalam

China

Beijing Normal University-Hong Kong Baptist
University United International College
Institute for Tourism Studies, Macao
University of Macau, Macao SAR,
The People's Republic of China

China (Hong Kong)

City University of Hong Kong
Hong Kong Shue Yan University
The Chinese University of Hong Kong
The Hong Kong Polytechnic University
The Hong Kong University of Science
and Technology
The University of Hong Kong

Indonesia

BINUS University
Gadjah Mada University
President University
Universitas Indonesia
Universitas Katolik Parahyangan

Korea

College of Business Administration,
Kookmin University
Dongseo University
Ewha Womans University
Hanyang University
Korea University
Kyung Hee University
Pusan National University
Sogang University
Sookmyung Women's University
University of Ulsan
Yonsei University

Kyrgyzstan

American University of Central Asia

Malaysia

Taylor's University
The University of Malaya
Universiti Sains Malaysia

Singapore

Singapore Management University

Taiwan

Feng Chia University
National Chengchi University
National Taiwan Normal University
Tamkang University
Tungshai University
Yuan Ze University

Thailand

Mahidol University International College
Thammasat University

The Philippines

Ateneo de Manila University
De La Salle University
University of the Philippines

Japan

Ritsumeikan University
Akita International University
Oita University

EUROPE

Austria

Management Center Innsbruck
Salzburg University of Applied Sciences
Steyr School of Management
(University of Applied Sciences Upper Austria)
University of Applied Sciences bfi Vienna

Belgium

Management School, University of Liege
Vesalius College Brussels

Croatia

Zagreb School of Economics and Management

Czech

Metropolitan University Prague

Denmark

AARHUS BSS, Department of Business
Development and Technology, Campus Herning
The Copenhagen Business School

Finland

Laurea University of Applied Sciences
Tampere University of Applied Sciences (TAMK)
University of Helsinki

France

Ecole Supérieure des Sciences Commerciales
d'Angers - School of Management
ESC AMIENS
Groupe KEDGE Business School
Institut Supérieur du Commerce Paris
Neoma Business School
Rennes School of Business

Germany

European University Viadrina Frankfurt (Oder)
Faculty of Business Administration and
Economics at Heinrich Heine University
Karlsruhehochschule International University
Otto-von-Guericke-Universität Magdeburg
SRH University Heidelberg
University of Hohenheim
Zeppelin University

Greece

The American College of Greece

Hungary

University of Pécs

Iceland

University of Iceland

Italy

Ca' Foscari University of Venice
Università Cattolica del Sacro Cuore
Università Commerciale Luigi Bocconi

Lithuania

Vilnius University

Norway

BI Norwegian School of Management
Norwegian University for Science and
Technology
University of Agder
University of Bergen

Poland

Kozminski University
Warsaw School of Economics

Portugal

ISCTE - Lisbon University Institute

Republic of Macedonia

International University of Struga

Republic of Turkey

Istanbul Commerce University

Romania

Romanian-American University

Spain

IE University
The Universitat Rovira i Virgili
University of Alicante

Sweden

Halmstad University
Linnaeus University
Lund University
Södertörns högskola

Switzerland

Zurich University of Applied Sciences

The Netherlands

The Hague University of Applied Sciences
Tilburg University
Universiteit Leiden

U.K.

Cardiff University
Oxford Brookes University
The University of Hertfordshire
University of Kent
University of Leicester
Westminster Business School, University of
Westminster

LATIN AMERICA

Argentina

Universidad Argentina de la Empresa
Universidad Nacional del Litoral

Ecuador

Universidad Del Pacifico

Mexico

Instituto Tecnológico Y De Estudios Superiores
de Monterrey
Universidad de Monterrey

Peru

Universidad Del Pacifico
Universidad San Ignacio de Loyola S.A.

NORTH AMERICA

Canada

Beedie School of Business, Simon Fraser University
HEC Montréal
Saint Mary's University
Schulich School of Business, York University
The University of British Columbia
Université du Québec à Montréal
University of Lethbridge
University of Waterloo

U.S.A.

American University
Carroll College
City University of New York, Staten Island
Florida International University
Georgia Institute of Technology
Grand Valley State University
James Madison University
Minnesota State University Moorhead
Old Dominion University
San Diego State University
St. Edward's University
The University of Hawai'i at Mānoa
The University of New Mexico
The University of Oklahoma
University at Buffalo, The State University of
New York
University of Wyoming

OCEANIA

Australia

Charles Sturt University
James Cook University
La Trobe University
The University of Western Australia
Victoria University

Samoa

The National University of Samoa



A CAMPUS LIKE NO OTHER



Take students originating from ninety countries/regions and put them in a space that encourages experimentation and discovery. What results is a completely unique and vibrant community of students who not only embrace APU's multicultural atmosphere but thrive in it through a colorful array of activities, events, clubs, and societies. No matter what your interests are, APU has a place for you.

Throughout the school year, APU designates several Multicultural Weeks where students can showcase the cultures of one country or region. Take the lead as an organizer or join in these celebrations of world culture as a performer. It is the learning experience of a lifetime.



A few of the student-led organizations on campus (in alphabetical order)

APU Karate Club
APU Soccer Club
APU Tea Ceremony Club
Global Business Leaders
Habitat APU
International Relations
Student Association
"K-Muse" K-pop Dance Troupe
"Musy Tone" International
Singing Club
"PRENGO" Overseas
Volunteering Club
Rugby Club
"Symbio" Conservation Club
Wadaiko "Raku" Japanese
Drumming Club
Women's and Men's
Lacrosse Teams
"Yossha-koi" Japanese
Dance Troupe

2017 Academic Year Multicultural Weeks (in alphabetical order)

Beppu Week
Chinese Week
Fashion Week
Indonesian Week
International
Cooperation Week
Korean Week
Kyoto Week
Myanmar Week
Nepali Week
Oceania Week
Sri Lankan Week
Taiwan Cultural Week
Thai Week
Vietnamese Week

YOUR HOME AWAY FROM HOME

Located on top of a small mountain at an altitude of 330 meters with beautiful natural surroundings, APU's campus overlooks the city of Beppu and its coastline. This amazing view is just the beginning of what you will find here on campus.

ON-CAMPUS FACILITIES/AMENITIES

- State-of-the-art library and media center
- Student union building with a cafeteria, café, convenience store, Japanese tea ceremony room, meeting spaces, and music/dance studios
- Multipurpose auditorium
- Outdoor amphitheater
- Gymnasium and fitness center
- Multipurpose fields for soccer, rugby, lacrosse, baseball, etc.
- Basketball courts
- Tennis courts
- Health clinic and counseling room
- ATMs
- Postal services
- Local food trucks

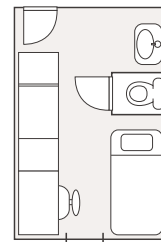
NOT YOUR TYPICAL RESIDENCE HALL

With students from diverse cultures living under one roof, the time you will spend in our on-campus residence hall, AP House, is an unforgettable experience. This unique setting enables you to adapt to your new life in Japan and learn about the cultures of the world through interaction with peers while having a private space to concentrate on your studies. To assist you with this transition, each floor has experienced students selected as resident assistants (RAs) who will answer your questions and concerns and hold activities for you to join.

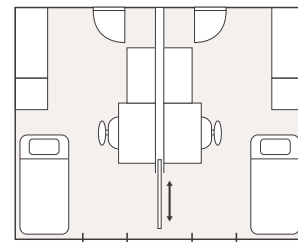
ROOM OPTIONS

You have the option of living in a single or shared room. Shared rooms allow you to have an even greater intercultural experience as you will be living with a Japanese roommate. These rooms are separated by a lockable sliding door for your privacy. All rooms are fully furnished.

Single Room



Shared Room



AP HOUSE STATISTICS

378

shared rooms

932

single rooms

1,138

residents

61.1%

international students

52

countries and regions represented

44

communal kitchens

49,000 JPY

monthly rent including utilities

AP HOUSE FACILITIES

- Private shower rooms
- Japanese-style communal baths
- Computer rooms
- Study rooms
- Small convenience store
- 24 hour security
- Indoor recreation facilities like billiards
- Outdoor basketball courts
- Air conditioning unit in each room
- Internet available in all rooms

*Fees are subject to change.



Library



Cafeteria



Student Union



Library group work space



Co-op convenience store



Inside AP House room



Student Office and Career Office



Fitness center



Food trucks



AP House lobby

STUDENT LIFE

18

SETTLING IN

EXPERIENCE JAPAN

Japan is not only the world’s third largest economic center but also one of the most popular travel destinations thanks to its rich traditional and modern culture combined with beautiful landscapes. The country also prides itself on cutting-edge technology and maintaining one of the highest safety records found anywhere in the world. For the ideal location to earn your university degree, look no further.

YOUR NEW HOMETOWN

APU is located in Kyushu, the southernmost major island of Japan, in the bayside city of Beppu. The city’s historic backstreets and abundance of hot spring baths make it one of Japan’s most visited cities by Japanese and international tourists alike. Beppu is a very safe city with a low cost of living compared to other popular study destinations in Japan and abroad. Dive into the local culture by participating in festivals, sporting events, and other activities alongside the welcoming community.


A COMFORTABLE LIFESTYLE

From your second year, you will move off campus into downtown Beppu and choose among living in an APU-owned residence hall, private apartment, or shared student housing. APU provides support to help you make the transition from on-campus to off-campus accommodation. You will find many entertainment options such as shopping malls, cafes, karaoke, bowling, and restaurants with international food. In addition, Beppu also has an abundance of clean drinking water, fresh air, seaside walking paths, sports facilities as well as medical centers to support your healthy lifestyle. Another advantage is that, as an APU student, you will be covered by Japan’s National Health Insurance.

ALL IN A DAY’S WORK

Part-time jobs are another option for you to gain real world experience. You are allowed to work on or off campus for up to 28 hours a week during the semester and 40 hours a week during vacations. APU offers to help you obtain the correct work permit before you start to work. Please note that availability of part-time work may vary. Additionally, while on-campus jobs may not require Japanese language ability, off-campus jobs often require at least a conversational level of Japanese.



BEPPU AT A GLANCE			 AVERAGE TEMPRATURE	
118,877 total residents	4,275 international residents	2,217 hot springs	JANUARY 5 °C / 41 °F	APRIL 14 °C / 57 °F
1,374 METERS Tsurumidake, Beppu's tallest mountain		No 1 in Japan for amount of hot spring water	No 2 in the world	JULY 28 °C / 82 °F
			OCTOBER 20 °C / 68 °F	

CREATING A BRIGHTER TOMORROW

TESTING THE WATERS

Gain insight on the working world by joining one of APU's internship programs, business competitions, or joint projects with external organizations, and directly connect your studies to your career goals. Through this, you will also have the chance to create invaluable networks with professionals at the top of their fields. There are specific programs for which you can earn academic credits as well.

EXPLORE YOUR OPTIONS

With the knowledge, language ability, and experience you obtain at APU, there are no limits to where your degree will take you. Thanks in part to APU's Career Office, we have an unprecedented job placement rate of 96.7% for our students seeking employment, and in the past year alone, approximately 300 companies and organizations visited APU to specifically recruit our students for a variety of employment positions in Japan and beyond. This means you do not even need to leave campus to get your foot in the door. Many students pursue higher education after graduation, and a number also go on to establish their own businesses in Japan and overseas.

Major employers for 2016 academic year (in alphabetical order)

Adecco Ltd.
All Nippon Airways Co., Ltd.
Bandai Namco Entertainment Inc.
Bloomberg L.P.
Deloitte Tohmatu Consulting LLC
Fujitsu Limited
Honda Motor Co., Ltd.
IBM Japan, Ltd.
Imperial Hotel, Ltd.
Japan Airlines Co., Ltd.
JTB Pte. Ltd.
Kumon Institute of Education Co., Ltd.
LINE Corporation
Mitsui Chemicals, Inc.
Mizuho Financial Group, Inc.
Nippon Steel & Sumitomo Metal Corporation
Nomura Securities Co., Ltd.
NTT Docomo, Inc.
Oracle Corporation Japan
Panasonic Corporation
Resona Bank, Limited
Robert Walters Japan K.K.
State Street Trust and Banking Co., Ltd.
Uniqlo Co., Ltd.
Yanmar Co., Ltd.



Major graduate schools for 2013-2017 academic years (in country/region's alphabetical order)

The Australian National University, Australia
University of New South Wales, Australia
McMaster University, Canada
University of British Columbia, Canada
Copenhagen Business School, Denmark
IESEG School of Management, France
Albert Ludwig University of Freiburg, Germany
Bielefeld University, Germany
City University of Hong Kong, Hong Kong
The Hong Kong Polytechnic University, Hong Kong
Kyoto University, Japan
The University of Tokyo, Japan
Waseda University, Japan
Korea University, Korea
Kyung Hee University, Korea
Erasmus University Rotterdam, Netherlands
Leiden University, Netherlands
BI Norwegian Business School, Norway
National University of Singapore, Singapore
Lund University, Sweden
Chulalongkorn University, Thailand
University of Leeds, UK
University of Oxford, UK
University of Michigan, USA
Yale University, USA

ALUMNI JOURNEYS



APU

MASTER'S AND PH.D. AT
UNIVERSITY OF BATH

Alisha Tuladhar (Nepal)

APM, Graduated in 2015
Lives in: United Kingdom

Under the guidance of my seminar professor during my final year at APU, I was accepted to the University of Bath for a master's program in innovation and technology management. Academically, my time at APU studying key business concepts and theories proved to be a strong foundation for my master's course. In terms of non-academic skills, the training at APU I received in intercultural understanding, tolerance, problem-solving, and multicultural teamwork has given me the confidence and abilities to thrive here in the UK. Since completing my master's degree, I applied to continue my studies at the University of Bath, School of Management in the Ph.D. program. My message to you as a new APU student is focus your time and energy on making the most of APU's international campus; don't be too shy to try new languages, get involved in clubs and volunteering, and most importantly, listen and learn from the diverse group of friends you will have around you.



APU

MINISTRY OF FOREIGN AFFAIRS,
THAILAND

Sukuma Uttarak (Thailand)

APS, Graduated in 2017
Lives in: Thailand

Due to the nature of my work, people assume I have a degree in media but are surprised to hear it is actually in international relations. This study choice has been vital in my job as a visual communication designer at the Ministry of Foreign Affairs of the Kingdom of Thailand, as my work is based on the connection between creativity and policy. In other words, I create visual designs for the ministry which aim to enhance the public's understanding of complicated topics like politics, law, and economics. I am very grateful for my APU experience, which not only provided the academic foundation for my career in foreign affairs, but also the stage to cultivate my artistic abilities in design. During my four years at APU, I collaborated on video and photo projects with friends, worked on countless visual projects for Multicultural Weeks, and even organized a photo exhibition in downtown Beppu featuring works by APU students under the theme, *Finding Home*. This is where I discovered more about myself, my abilities, and my dreams.

APU

WORLD FOOD
PROGRAMME

UN
VOLUNTEERS

Dong Uk Shin (Korea)

APS, Graduated in 2016
Lives in: Germany

Following graduation from APU, I interned at the World Food Programme for a year, and then became a UN International Youth Volunteer to gain more experience in international development. My current role is with the UN Volunteers headquarters in Bonn, Germany, with responsibilities in raising awareness of and promoting (especially through social media) the work of UN Volunteers across Europe in response to the current refugee and migrant crisis. I will be traveling to Greece soon to join other UN Volunteers and refugees to engage in a photography mission. Working in the UNV means I am part of an extremely multicultural workplace. But this diversity makes me feel right at home as it reminds me of the daily interactions I had at APU with my inspiring international friends and faculty.



APU

ABBVIE
PHARMACEUTICAL

BAYER
PHARMACEUTICALS, JAPAN

John Mungai (Kenya)

APM, Graduated in 2009
Lives in: Japan

After several years working in Tokyo in the pharmaceutical sector, I joined Bayer Pharmaceuticals in 2016 as a finance manager and have since been promoted to senior manager. I have so much pride in working for a company whose products have life-changing benefits such as extending the overall survival rate and improving quality of life for cancer patients, giving them precious time with their loved ones. I work with coordination of long-term strategic planning, annual operation budgets, performance monitoring, and distribution of medicines for three divisions—oncology, hematology, and ophthalmology—which have a combined revenue of over 600 million US dollars. In this role, I need extreme stakeholder management skills and work across several time zones and cultures. This has been a perfect fit for me as an APU graduate, because beyond the finance education I received, I am well accustomed to handling ambiguities of different cultures, languages, and geolocations. As an APU student, I advise you to actively improve your interpersonal and intercultural communication skills—be brave enough to embrace change.



FEES AND SCHOLARSHIPS

FEES FOR INITIAL YEAR OF STUDY

	FIRST YEAR	SECOND YEAR TRANSFER	THIRD YEAR TRANSFER
Program Duration	4 years	3 years	2 years
Admission Fee	130,000 JPY (1,130 USD)	130,000 JPY (1,130 USD)	130,000 JPY (1,130 USD)
Tuition	1,328,000 JPY* (11,548 USD)	1,412,000 JPY (12,278 USD)	1,412,000 JPY (12,278 USD)
Comprehensive Renters' Insurance	16,200 JPY (141 USD)	12,380 JPY (108 USD)	8,540 JPY (74 USD)
AP House Entrance Fee	228,000 JPY (April) / 203,500 JPY (September) (1,983 USD (April) / 1,770 USD (September))		
AP House Monthly Rent	49,000 JPY (426 USD)	49,000 JPY (426 USD)	49,000 JPY (426 USD)

*Tuition for the second to the fourth year of study is 1,412,000 JPY per year. US dollar equivalents are for REFERENCE ONLY, based on the rate of 1:115. All fees must be paid in Japanese yen. Fees listed above are subject to change.

Admission Fee

The admission fee is required for all students, regardless of scholarship amount, and is usually due within approximately four weeks after admission result notification. This fee is non-refundable under any circumstance.

Tuition

A partial payment of your first semester tuition is due in order to complete your enrollment procedures. The remaining tuition will be due at a later time. For APU Tuition Reduction Scholarship recipients, this amount will decrease based on the percentage awarded.

Comprehensive Renters' Insurance

This insurance is required for all students for protection in case of liability, and its fee is required from all students, regardless of scholarship amount.

AP House Entrance Fee

This fee is required for all students, regardless of scholarship amount. The fee includes a moving-in fee (32,000 JPY), security deposit (98,000 JPY), and rent (49,000 JPY per month) for two months for April enrollees and for one and half months for September enrollees.

LIVING EXPENSES

Living expenses for a year (including rent listed above) amount to approximately 1,000,000 JPY (approx. 8,696 USD).

SCHOLARSHIPS

APU awards Tuition Reduction Scholarships to outstanding international students. These cover 30%, 50%, 65%, 80%, or 100% of your tuition until graduation. You are eligible to apply if you will hold a student visa while studying at APU. Additional scholarships are available after enrollment. Scholarships at APU are primarily merit based.

APPLY TO APU



<http://r.apu.jp/apply>

APPLICATION PERIOD

April 2019 enrollment:

June 1, 2018 (Fri) - October 17, 2018 (Wed)

September 2019 enrollment:

September 3, 2018 (Mon) - March 27, 2019 (Wed)

If you reside in Japan, China, India, Indonesia, Korea, Thailand, or Viet Nam, visit the admissions website for additional information.

Transfer applicants must pass a prescreening process before submission of their formal application.

The prescreening schedule can be found on the admissions website. https://admissions.apu.ac.jp/how_to_apply/transfer_students/

MINIMUM REQUIREMENTS FOR ADMISSION

Education:

First year applicants: 12 years or equivalent of standard education

Transfer applicants: 13-14 years or equivalent of standard education

Minimum language test score for English-basis applicants:

TEST	FIRST YEAR	TRANSFER
TOEFL® iBT Test	61	79
TOEFL® PBT Test	500	550
TOEIC® L&R Test *1, 2	700	780
IELTS	5.5	6.0
EIKEN	Pre-1	1
PTE Academic	45	50
Cambridge English Language Assessment	FCE	FCE Grade B

*1 TOEIC®, TOEFL® are registered trademarks of the Educational Testing Service (ETS). This publication is not endorsed or approved by ETS.

*2 L&R is an abbreviation for LISTENING AND READING

Minimum language test score for Japanese-basis applicants:

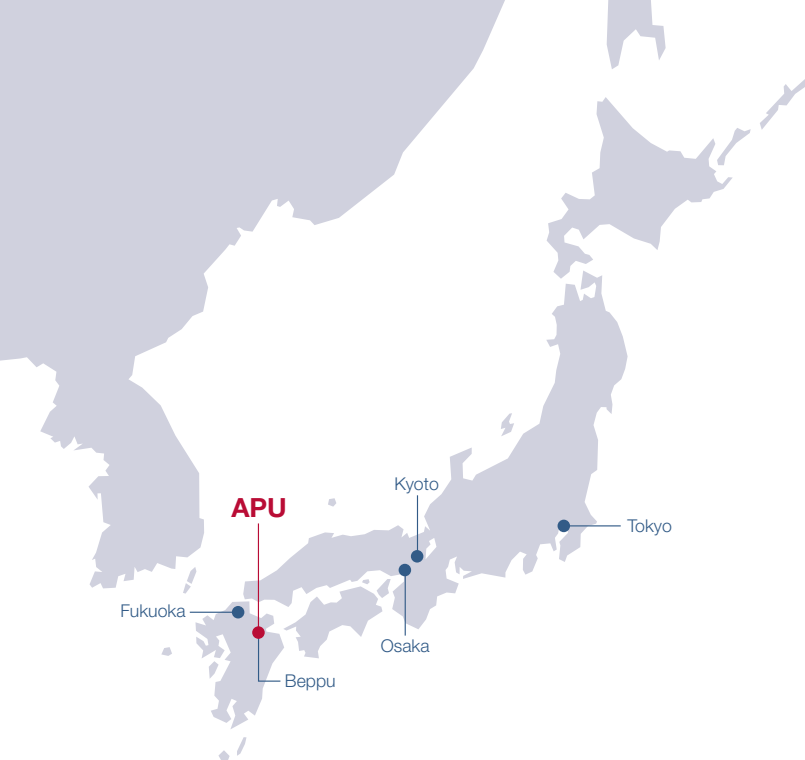
TEST	FIRST YEAR	TRANSFER
JLPT N1	90	100
JLPT N2	100	135
EJU (Japanese) *	220	250

*not including the writing section

APPLICATION PROCESS

- Complete the online application at <http://r.apu.jp/apply>
- Submit all required supporting documents (originals and certified copies) by post
- Pay the application fee by credit card or bank transfer
 - If you reside outside Japan: 3,500 JPY (credit card) or 5,000 JPY (bank transfer)
 - If you reside in Japan: 36,800 JPY (credit card) or 35,000 JPY (bank transfer)
- Wait for APU to screen your documents and contact you to arrange an interview
- Have an interview online, by telephone, or in person
 - (If you live outside Japan, it is not necessary for you to travel to Japan for your interview.)
- Receive screening results from APU.

Your result notification will include both admission and scholarship screening results. If you are accepted to APU, you will be expected to submit additional documents by post and pay enrollment procedure fees. APU will apply for a Certificate of Eligibility (COE) on your behalf via the Immigration Bureau using the documents you provide. With this certificate, you can apply for a student visa at your local Japanese embassy or consulate.



CONTACT US

There are APU offices in the following countries and regions. You are encouraged to make inquiries at your local offices where possible. If you live in a country without an APU office or representative, please contact the APU Admissions Office directly.

APU ADMISSIONS OFFICE

Ritsumeikan Asia Pacific University
1-1 Jumonjibaru, Beppu, Oita 874-8577 Japan
Tel: +81-977-78-1119

Fax: +81-977-78-1121

<http://r.apu.jp/apply>

Email: welcome@apu.ac.jp

Ritsumeikan.APU

APUAdmissionsOffice

ritsumeikanapu



APU OVERSEAS OFFICES

CHINA

Ritsumeikan Liaison Office
Shanghai Jiaotong University
D, 18F Sun Tong Infoport Plaza,
No. 55, Huaihai West Rd.
Shanghai City 200030 China
Tel: +86-21-6283-5104
Fax: +86-21-6283-5247
Email: apuchina@apu.ac.jp

TAIWAN

APU Taiwan Office
C/O MIBC, F10F., NO.209, Sec. 1,
Civic Blvd., Datong Dist., Taipei City 103,
Taiwan
Tel: +886-2-2181-1666
Email: taipei@apu.ac.jp
 APUTW

APU OVERSEAS REPRESENTATIVES

INDIA

Mr. Vishnu Vankayala
4th Floor, Vansh Building, AP-801,
1st Street, G-Block, 10th Main Road,
Anna Nagar, Chennai-040,
Tamil Nadu, India
Tel: +91-44-4352-2078
Email: s-india@apu.ac.jp

INDONESIA

APU Indonesia Information Center
C/O MARQUEE, Mayapada Tower I,
11th Floor, Jl.Jend. Sudirman Kav. 28
Jakarta 12920 Indonesia
Tel: +62-21-5289-7328/7392
Email: apu-ina@apu.ac.jp
 apuindonesiaoffice

THAILAND

APU Thailand Office
1015 Room, 10th Floor, Serm-mit
Tower 159/16 Soi Asoke,
Sukhumvit 21 Road, Wattana,
Bangkok 10110 Thailand
Tel/Fax: +66-2-665-7145
Email: thailand@apu.ac.jp

SRI LANKA

Mr. Harin Gunawardena
183/1, Nawala Road, Nugegoda,
Sri Lanka
Tel: +94-714251314
Email: harin@apu.ac.jp

KOREA

APU Korea Office
#608, Halla Classic Officetel 6th Floor,
23 Gangnam Daero 84 Gil,
Gangnam-gu, Seoul 135-934 Korea
Tel: +82-2-564-3425/3426
Fax: +82-2-564-3427
<http://www.ritsapu-kr.com>
Email: hello@ritsapu-kr.com

VIET NAM

APU Viet Nam Office
Hanoi:
No A31D11, Alley 66/1, Lane 84
Tran Thai Tong St., Cau Giay District,
Hanoi, Viet Nam
Tel: +84-24-32-000-619

Ho Chi Minh City:
238/2B Nguyen Thi Minh Khai St.,
Ward 6, District 3,
Ho Chi Minh City, Viet Nam
Tel: +84-28-39-30-6432

<http://vietnam.apu.ac.jp>
Email: vietnam@apu.ac.jp
 apuvietnam

