

Shape your world



Ritsumeikan
Asia Pacific University

APU

**RITSUMEIKAN
ASIA PACIFIC UNIVERSITY**
BEPPU, JAPAN



2022



2 SHAPE YOUR WORLD

3 APU BY THE NUMBERS

5 ACADEMICS

7 COLLEGE OF INTERNATIONAL MANAGEMENT

9 COLLEGE OF ASIA PACIFIC STUDIES

11 SUBJECT LIST

13 EXCHANGE PROGRAMS

15 EXTRACURRICULAR ACTIVITIES

17 STUDENT LIFE

21 CAREERS

23 ALUMNI JOURNEYS

25 ADMISSIONS GUIDE



All information is as of the 2020 academic year.
For up-to-date information related to the university's
response to COVID-19, see the main APU website:
<https://en.apu.ac.jp/home/notice/content3/>

SHAPE YOUR WORLD

FREEDOM, PEACE, HUMANITY.
INTERNATIONAL MUTUAL UNDERSTANDING.
THE FUTURE SHAPE OF THE ASIA PACIFIC REGION.

Ritsumeikan Asia Pacific University (APU) first opened its doors in 2000 with these ideals as its foundation. What emerged was an entirely new **multicultural learning environment** with the aim of creating global leaders across all fields and industries. Since then, this goal has not only been reached but exceeded as thousands of students from over one hundred fifty countries have come together to learn **intercultural coexistence, responsible business leadership, and sustainable development**. With this well-rounded base of global knowledge, APU students and graduates are actively finding solutions to the issues our world is facing.

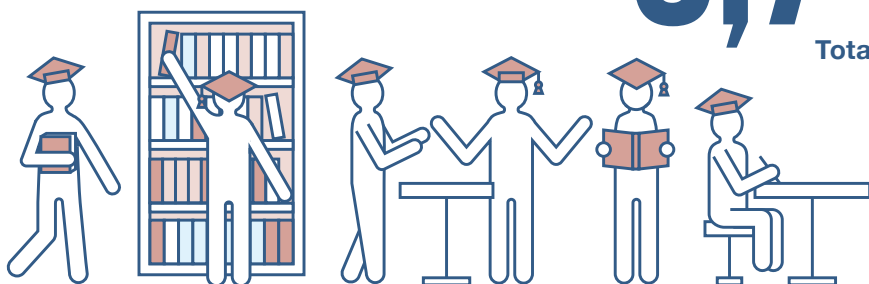
**Your path to shape your own world and
the world around you starts at APU.**



APU BY THE NUMBERS

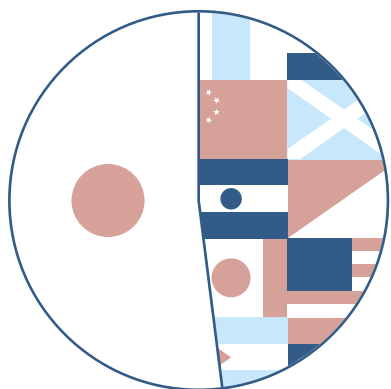
5,745

Total students



18,857

Total alumni



47%

International students

48%

International faculty



98%

Classes offered in
both English and
Japanese





90



Countries and regions
represented by students

22



Countries and regions
represented by faculty

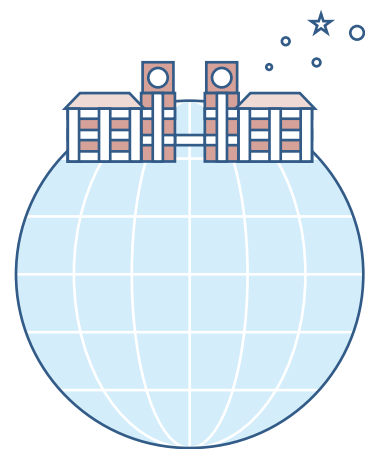
159



Countries and regions
represented by alumni



NO.1 PRIVATE
UNIVERSITY
OVERALL IN WESTERN JAPAN
(Times Higher Education University Rankings 2020)



Selected by the Japanese
government as a

**TOP GLOBAL
UNIVERSITY**



EDUCATION THAT INSPIRES YOU



Drusila Bento Gomes (Angola)

APS, Fourth Year Student

I came to Japan with aspirations of self-discovery and growth. Ever since I was younger, I hoped to one day go far beyond the physical and intangible borders that limited my understanding of the world. APU provides me the platform to uncover new cultures, people, and customs among other aspects that make Japan and APU a unique place. I am able to cultivate myself both academically and on a personal level. The many meaningful relationships that I have developed during my time at APU are definitely ones I will carry with me even after I leave and have made my time here in Japan much more fulfilling.

OUR PROGRAMS



COLLEGE	AREAS OF STUDY
COLLEGE OF INTERNATIONAL MANAGEMENT (APM) <i>Bachelor of Business Administration (BBA)</i>	<ul style="list-style-type: none"> • Innovation and Economics • Marketing • Strategic Management and Organization • Accounting and Finance
COLLEGE OF ASIA PACIFIC STUDIES (APS) <i>Bachelor of Social Science (BSocSc)</i>	<ul style="list-style-type: none"> • Environment and Development • Hospitality and Tourism • International Relations and Peace Studies • Culture, Society and Media

You need at least 124 academic credits in order to graduate. Average time until completion is four years. There are also options to graduate in three or three and a half years.

ARE YOU READY TO MAKE A POSITIVE IMPACT ON A GLOBAL LEVEL?

BEYOND THE TRADITIONAL CLASSROOM SETTING

Learning at APU is not simply a matter of reading books and attending lectures. APU's interactive style of education creates **daily opportunities for lively discussions and group work with students of different cultural and socioeconomic backgrounds** in a variety of classroom settings. We invite you to take your knowledge, turn it into action, and make an impact out in the world that exists beyond the classroom. From field studies, exchange programs, conferences, and academic competitions, to community outreach and internships, **get involved in the vast range of opportunities that await you at APU.**

BECOME MULTILINGUAL

Knowing more than one language is not a goal for our students—it's a requirement. Studying your degree in English means you will also be required to learn Japanese and vice-versa. **Want to add another language to your repertoire?** APU offers additional language courses in the Asia Pacific languages of Chinese, Korean, Malay/Indonesian, Spanish, Thai, and Vietnamese. **Acquire another language and you will have a significant advantage in your future career** whether it is based in your home country, Japan, or another location.

ENGAGE WITH DEDICATED FACULTY

Highly qualified faculty from twenty-two countries and regions, who bring a new dimension of practical learning to the classroom. **Learn about the latest issues affecting your world from esteemed practitioners** have honed their skills at the cutting edge of innovation over the decades.

COLLEGE of INTERNATIONAL MANAGEMENT [APM]

BACHELOR OF BUSINESS ADMINISTRATION (BBA)



Cultivate your own global perspectives, business ethics, and problem-solving skills in APM to join the next generation of international business leaders. As a student in APM, you will begin your studies tackling core management concepts and then branch out into your specialized field of interest.

The College of International Management is accredited by the Association to Advance Collegiate Schools of Business (AACSB International), which is widely regarded as the highest level of accreditation for business schools worldwide.

AREAS OF STUDY

INNOVATION AND ECONOMICS

Learn about what generates innovation, how production is managed, and the underlying economic foundations of these concepts. The lectures are geared towards those wishing to **contribute to global development through business or policy-making**.

MARKETING

The theories and methods needed to **successfully provide goods and services to the global market** is the focus of courses in the marketing area of study. You will learn to identify the most effective method to link production to the final consumer and determine how much to provide at what cost.

STRATEGIC MANAGEMENT AND ORGANIZATION

These classes **focus on how to set goals, establish principles, and develop methods for an organization** so that it meets the challenges of evolving social needs. If you aim to become an entrepreneur or plan to take over your family business, this area of study is ideal for you.

ACCOUNTING AND FINANCE

The health of corporations is evaluated by the ebb and flow of money, which is known as accounting, while finance is the field concerned with raising and managing the funds necessary for corporate activities. Classes in this area of study enable you to **gain a solid foundation in these demanding fields and exercise your knowledge in an international context**.



Dean of APM Lailani Laynesa Alcantara (The Philippines)

Ph.D. (Management), University of Tsukuba

The APM curriculum is AACSB-accredited and designed for students to become globally competitive. APM students are equipped with the knowledge and skills critical to becoming a well-rounded professional and are nurtured with values that foster leadership and social responsibility.

In APM, you have access to a diverse group of faculty with distinguished professional and academic backgrounds, engaging and innovative classes, and a global network of individuals who are inspired and committed to making a positive impact in their fields of work and in society. You can achieve success in your academic pursuits and chosen business discipline while engaging in dialogues with creative leaders and global visionaries.



COLLEGE OF ASIA PACIFIC STUDIES [APS]



BACHELOR OF SOCIAL SCIENCE (BSocSc)

In APS, we challenge you to tackle a vast array of global issues and develop new ways of thinking to face these obstacles head-on. You will gain a broad understanding of the political systems, economies, societies, and cultures of the Asia Pacific region while gathering relevant skills in language and information technology. APS prepares you for a wide variety of careers in the government, international organizations, media, the travel industry, and multinational corporations.

The Hospitality and Tourism area of study received the United Nations World Tourism Organization Tourism Education Quality Certification. This certification is granted to institutions that have high-quality tourism education, research, and training programs. APU is the second institution in Japan to receive the UNWTO TedQual Certification.

AREAS OF STUDY



ENVIRONMENT AND DEVELOPMENT

Profit-driven development has brought with it a raft of environmental and other issues, and sustainable development is an urgent issue for our times. Lectures in this area of study **tackle the question of sustainable development** in relation to policies and efforts to **balance environmental conservation and economic development**.

HOSPITALITY AND TOURISM

As cultural exchange and promotion of regional industries through tourism are vital to the development of the Asia Pacific region, this area of study explores multiple facets of tourism through the lenses of culture, society, and community. You will **focus on the theory and practice of hospitality management as it relates to the tourism, health, service, and welfare industries**.

INTERNATIONAL RELATIONS AND PEACE STUDIES

This area of study allows you to **delve into the intricacies of conflict resolution and peace-building** as well as **cultivate the ability to deal with increasingly complex global issues**. Your studies will draw from the three disciplines of international law, political science, and economics and help you gain the necessary critical thinking skills and a policy-oriented approach to succeed in the field.

CULTURE, SOCIETY AND MEDIA

This area of study enables you to analyze the societies, cultures, and values of the Asia Pacific to deepen your understanding of the issues this region faces. You will **gain a global perspective, fundamental media skills, and the ability to view societal issues from several angles**.

Dean of APS Yoichiro Sato (Japan)

PhD. (Politics), University of Hawaii

The College of Asia Pacific Studies (APS) is a learning community that encourages students to gain valuable knowledge and critical thinking skills to challenge the status quo in order to find innovative solutions to our world's issues. APS pushes students to go beyond conventional thinking and communicate with openness and curiosity in order to expand one another's knowledge, skills, and life experiences. This approach connects academic learning with practical problem solving to meet the emerging challenges of the Asia Pacific region.

On APU's multicultural campus, students improve their observational and analytical skills as well as their level of sensitivity to diverse perspectives. Alongside this, the APS curriculum offers students a balanced combination of knowledge in chosen fields of study, life skills necessary for success, along with a global network of friends and colleagues that last a lifetime.



SUBJECT LIST



The following courses are offered at APU.
Some classes may be unavailable depending on the year.

LIBERAL ARTS SUBJECTS

APM Bridge Program
APS Bridge Program
Bioethics
Career Design I • II • III • IV
Computer Literacy
Constitution of Japan
Culture and Society of the Asia Pacific
Data Mining
Database Systems
Economy of the Asia Pacific
Environmental Science
Geography of the Asia Pacific
Health Science
History of the Asia Pacific
Intercultural Fieldwork I • II
Internet Technology Integration
Internship
Introduction to Culture and Society
Introduction to Development Studies

Introduction to Economics
Introduction to Environmental Studies
Introduction to GIS
Introduction to Intercultural Communication
Introduction to International Relations
Introduction to Media Studies
Introduction to Peer Leader Training
Introduction to Political Science
Introduction to the Internet
Introduction to Tourism and Hospitality
Japanese Art of Flower Arrangement
Japanese Art of Tea Ceremony
Japanese Culture and Society
Japanese Economy
Japanese Geography
Japanese History
Languages of the Asia Pacific
Legal Studies
Logical Thinking and Framework

Media Production Lab
Multicultural Collaborative Workshop
Negotiation Skills
Overseas Learning Design
Peace, Humanity and Democracy
Peer Leader Training I • IIA • IIB
Programming
Psychology
Religions of the Asia Pacific
Special Lecture (ICT)
Special Lecture (Japanese Studies)
Special Lecture (Liberal Arts Subject)
Statistics
Studies of Multicultural Comparison
Study Skills and Academic Writing
Traditional Japanese Arts
Volunteer Activities

LANGUAGE EDUCATION SUBJECTS

Japanese Language Classes

Business Communication in Japanese A • B
Career Japanese
Japanese Course
(Foundation/Intermediate/Pre-Advanced/
Advanced)
Japanese for Lectures
Japanese Project A • B • C • D • E • F
Language and Culture in Japan
Language and Social Topics in Japan

English Language Classes

English Course
(Elementary/Pre-Intermediate/Intermediate/
Upper-Intermediate/Advanced)

English for Business Presentations
English for Business Writing
English for Discussion and Debate
English for Journalism
English Project 1 • 2
Extensive Reading in English of the Media

Asia Pacific Language Classes

Chinese I – IV
Korean I – IV
Malay/Indonesian I – IV
Spanish I – IV
Thai I – IV
Vietnamese I – IV

Specific Language Classes

English Proficiency Preparation Course I • II • III
Intensive Language Learning Overseas
Introduction to Asia Pacific Languages
Introduction to Official Languages of the United
Nations I – French
Introduction to Official Languages of the United
Nations II – Russian
Introduction to Official Languages of the United
Nations III – Arabic
Japanese Language Teaching
Japanese Linguistics for Japanese Language
Education
Special Lecture (Language Education Subject)
TESOL

APM SUBJECTS

Required Subjects

Accounting I
Advanced Mathematics
Business Ethics
Finance
Fundamental Mathematics
Global Management (Capstone)
Introduction to Management
Introduction to Marketing
Legal Strategy in Business
Management of Human Resources and
Organizational Behavior
Production Management

Strategic Management & Organization (SMO)

Advanced Human Resource Management
Advanced Organizational Behavior
Brand Management
Entrepreneurship
Family Business Management
International Logistics
International Transactions
Service Management
Special Lecture in Strategic Management &
Organization
Strategic Management
Supply Chain Management

Accounting & Finance (AF)

Accounting II
Advanced Accounting
Auditing
Corporate Finance
Cost Accounting
Financial Accounting I • II
Financial Market and Institutions
International Accounting
International Finance
Investment and Securities Analysis
Investment Strategy
Management Accounting
Special Lecture in Accounting
Special Lecture in Finance

Innovation & Economics (IE)

Asian Economy
Development Economics
Entrepreneurship
International Economics
International Political Economy
Macroeconomics
Microeconomics
Operations Research
Product Development
Special Lecture in Economics
Special Lecture in Innovation
Technology Management

Marketing (M)

Brand Management
Consumer Behavior
E-Commerce
International Logistics
International Marketing
Marketing Research
Product Development
Promotion and Sales Management
Service Management
Special Lecture in Marketing
Supply Chain Management

APM Common Subjects

APM Field Study
Business Case Analysis & Communication
Business Data Analysis
Business Internship
Field Research Project
Management Information Systems
Social Entrepreneurship
Special Lecture (Management)

Seminar Subjects

Major Seminar I • II
Research Seminar
Undergraduate Thesis



■ APS SUBJECTS

Core Subjects

Introduction to APS
Introduction to Area Studies

Environment & Development (ED)

Biodiversity
Community Based Tourism
Community Development
Conflict and Development
Development Economics
Development Policy
Development Sociology and Anthropology
Ecotourism
Environment and Society
Environmental Communication
Environmental Economics
Environmental Modeling and Analysis
Environmental Policy
Field Study for Environment and Development
GIS and Remote Sensing
Global Environmental Issues
Industrial Ecology
International Cooperation
International Economics
International Organizations
NPO/NGO Studies
Preliminary Seminar for Environment and Development
Politics of Development
Project Management in Development
Resource Management
Special Lecture in Environment and Development
Urban Environment and Development

Culture, Society & Media (CSM)

Cultural Anthropology
Cultural Studies
Education and Society
Ethnicity and the Nation State
Field Study for Culture, Society and Media
Gender Studies
Global History
Global Media and Conflict
Globalization and Law
Globalization and Regionalism
History of Japanese Foreign Relations
Identity and Politics
Language and Society

Media and Culture
Media and History
Media and Law
Media and Politics
Multiculturalism and Society
New Media and Society
NPO/NGO Studies
Preliminary Seminar for Culture, Society and Media
Religion and Belief
Social Psychology
Social Stratification
Social Theory
Sociology of Organizations
Special Lecture in Culture, Society and Media
The Humanities and Modernity
Transnational Sociology

Hospitality & Tourism (HT)

Advanced Human Resource Management
Advanced Organizational Behavior
Agri-heritage and Tourism
Community Based Tourism
Cultural Anthropology
Culture and History of Tourism
Destination Marketing and Management
Ecotourism
Event and Festival Management
Field Study for Tourism and Hospitality
Health and Wellness Tourism
Heritage Tourism
Hospitality Management
Hospitality Marketing
MICE Tourism Industry
Operations Research
Preliminary Seminar for Tourism and Hospitality
Project Management in Development
Resort Development
Sociology of Tourism
Special Lecture in Tourism and Hospitality
Tourism and Hospitality Law
Tourism and Social Media
Tourism Development and Planning
Tourism Economics
Travel Industry

International Relations & Peace Studies (IRP)

Comparative Political Economy of the Asia Pacific
Conflict and Development
Development Policy
Ethnicity and the Nation State
Field Study for International Relations and Peace Studies
Foreign Policy of Japan
Geo-Politics and Post Cold War Conflicts
Global Issues and Policies
Global Media and Conflict
Globalization and Law
Globalization and Regionalism
History of International Politics
History of Japanese Foreign Relations
Human Rights
Identity and Politics
International Conflict Resolution
International Cooperation
International Law
International Organizations
International Political Economy
International Relations in the Asia Pacific
International Relations Theory
Media and Politics
Peace Studies
Political Theory
Politics of Development
Preliminary Seminar for International Relations and Peace Studies
Regional Systems in the Asia Pacific
Special Lecture in International Relations and Peace Studies
Strategic Decision Making
Violence and Terrorism

APS Common Subjects A・B

APS Field Study
Area Studies
Field Research Project
Special Lecture (Asia Pacific Studies)

Seminar Subjects

Field Research Project
Graduation Research I・II
Introduction to Research Methods
Major Seminar I・II

*Some courses are cross-listed in more than one area of study.

STARTING OUT

Your four-year path to global citizenship begins with intensive Japanese language study, foundation courses for your area of study, and the Multicultural Cooperative Workshop, also known as MCW classes. In these workshops, international and domestic students have the opportunity to interact, discuss, and talk one-on-one. These required classes will allow you to quickly **adapt to your new life in Japan** and prepare you for an international career after graduation. You will then delve deeper into your studies through specialized courses and seminars and have the option for internships, field studies, international exchanges, on- and off-campus programs, and thesis research.

Sample weekly schedule for a first semester student enrolling in September*

MONDAY	TUESDAY	WEDNESDAY	THURSDAY	FRIDAY
<ul style="list-style-type: none"> Japanese Foundation I Japanese Foundation II Japanese Foundation III 	<ul style="list-style-type: none"> Japanese Foundation I Japanese Foundation II Japanese Foundation III Introductory class for your area of study 	<ul style="list-style-type: none"> Study Skills and Academic Writing Workshop Multicultural Cooperative Workshop 	<ul style="list-style-type: none"> Japanese Foundation I Japanese Foundation II Japanese Foundation III 	<ul style="list-style-type: none"> Japanese Foundation I Japanese Foundation II Japanese Foundation III

*Please note that your schedule may be different based on your Japanese language placement exam result and class times for your semester of enrollment. Academic schedules are subject to change.

BROADEN YOUR HORIZONS



Haruno Okagawa (Japan)

APS, Fourth Year Student

Université Internationale de Rabat
(Kingdom of Morocco)

September 2019 – May 2020,
Study Exchange

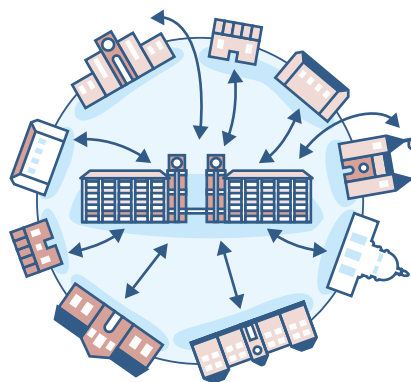
During my time abroad, I was able to do a variety of things, from studying about the region that I lived in to planning and carrying out exchange activities with Japanese language learners in the local area. To be honest, there were many things I wasn't used to, such as the food, climate, and language, and my time studying abroad was full of challenges. Even so, I pushed forward steadily, never losing sight of my goals. Once I began to take full advantage of my new environment, every day I spent became both fun and meaningful. At APU, you are sure to find a study abroad destination where you will shine brightest. Take a step toward personal growth and challenge yourself by studying abroad!

THE WORLD AT YOUR FINGERTIPS

Build your international portfolio by joining an exchange program for a semester or a year at one of our international or Japanese partner universities. If you are awarded an APU Tuition Reduction Scholarship, it will still remain valid during your time on an exchange program.

TWICE THE CHALLENGE, TWICE THE REWARD

The only thing better than getting a degree from one international university is getting two degrees from two international universities at the same time. This option is available for both APS and APM students by signing up for one of **APU's double degree programs**. Double degree programs are available for APS students with Salzburg University of Applied Sciences in Austria or St. Edward's University in the United States. A double degree is available for APM students with the NEOMA Business School in France.



150 Exchange partners
in 43 countries and regions

LIST OF PARTNER UNIVERSITIES



Africa

Egypt

The American University in Cairo

Kenya

United States International University-Africa

Morocco

Universite Internationale de Rabat

Asia

Azerbaijan

ADA University

Brunei

Universiti Brunei Darussalam

China

Beijing Normal University-Hong Kong

Baptist University

Institute for Tourism Studies, Macao

University of Macau, Macao SAR,

The People's Republic of China

Xi'an Jiaotong-Liverpool University

China (Hong Kong)

City University of Hong Kong

Hong Kong Shue Yan University

Lingnan University

School of Business of Hong Kong

Baptist University

The Chinese University of Hong Kong

The Hong Kong Polytechnic University

The Hong Kong University

of Science and Technology

The University of Hong Kong

Indonesia

BINUS University

Gadjah Mada University

President University

Universitas Katolik Parahyangan

Korea

Dongseo University

Ewha Womans University

Hanyang University

Kookmin University

Korea University

Kyung Hee University

Pusan National University

Sogang University

Sookmyung Women's University

University of Ulsan

Yonsei University

Kyrgyzstan

American University of Central Asia

Malaysia

Taylor's University

The University of Malaya

Universiti Sains Malaysia

Singapore

Singapore Management University

Taiwan

Feng Chia University

National Chengchi University

National Taiwan Normal University

Tamkang University

Tungshai University

Yuan Ze University

Thailand

Mahidol University International College

Thammasat University

The Philippines

Ateneo de Manila University

De La Salle University

University of the Philippines

Japan

Akita International University

Ritsumeikan University

Europe

Austria

Management Center Innsbruck

Salzburg University of Applied Sciences

University of Applied Sciences bfi Vienna

University of Applied Sciences Upper Austria

Belgium

University of Liege

Vesalius College

Croatia

Zagreb School of Economics and Management

Denmark

AARHUS BSS

The Copenhagen Business School

Finland

Laurea University of Applied Sciences

Tampere University of Applied Sciences(TAMK)

University of Helsinki

France

Ecole Supérieure des Sciences Commerciales d'

Angers - School of Management

EM Normandie

EM Strasbourg Business School,

University of Strasbourg

ESC AMIENS

Excelsia Group

Groupe KEDGE Business School

IESEG School of Management

Institut Supérieur du Commerce Paris

Neoma Business School

Rennes School of Business

Germany

European University Viadrina Frankfurt (Oder)

Heinrich Heine University

Karlsruhe International University

Otto-von-Guericke-University Magdeburg

SRH University Heidelberg

University of Hohenheim

Zeppelin University

Greece

The American College of Greece

Hungary

Budapest Business School University

of Applied Sciences

Iceland

University of Iceland

Italy

Ca' Foscari University of Venice

Università Cattolica del Sacro Cuore

Università Commerciale Luigi Bocconi

Lithuania

Vilnius University

Norway

BI Norwegian School of Management

Norwegian University for Science

and Technology

University of Agder

University of Bergen

Poland

Kozminski University

Warsaw School of Economics

Portugal

ISEG - Lisbon School of Economics &

Management, University of Lisbon

ISCTE - Lisbon University Institute

Romania

Romanian-American University

Slovak Republic

University of Economics in Bratislava

Spain

IE University

The Universitat Rovira i Virgili

University of Alicante

Sweden

Halmstad University

Linnaeus University

Lund University

Södertörn University

Switzerland

Zürich University of Applied Sciences

The Netherlands

The Hague University of Applied Sciences

Tilburg University

Universiteit Leiden

UK

Northumbria University

Nottingham Trent University

Oxford Brookes University

The University of Hertfordshire

University of Kent

University of Leicester

Westminster Business School,

University of Westminster

Latin America

Argentina

Universidad Argentina de la Empresa

Mexico

Instituto Tecnológico Y De Estudios

Superiores de Monterrey

Universidad de Monterrey

Peru

Universidad del Pacífico

Universidad San Ignacio de Loyola S.A.

North America

Canada

HEC Montreal

Saint Mary's University

Simon Fraser University

The University of British Columbia

Université du Québec à Montréal

University of Lethbridge

University of Ottawa, Telfer School of Management

University of Waterloo

York University

USA

American University

Carroll College

College of Staten Island, City University of New York

Florida International University

Georgia Institute of Technology

Grand Valley State University

James Madison University

Minnesota State University Moorhead

Nazareth College of Rochester

Old Dominion University

San Diego State University

Southern Illinois University Edwardsville

St. Edward's University

The University of New Mexico

The University of Oklahoma

University at Buffalo,

The State University of New York

University of Huston Downtown

University of North Florida

University of the Incarnate Word

University of Wyoming

Oceania

Australia

Charles Sturt University

James Cook University

La Trobe University

Victoria University

A CAMPUS LIKE NO OTHER



Take students originating from around ninety countries or regions and put them in a space that encourages experimentation and discovery. What results is a **completely unique and vibrant community** of students who not only embrace APU's multicultural atmosphere but thrive in it through a colorful array of activities, events, clubs, and societies. No matter what your interests are, **APU has a place for you.**

Throughout the school year, APU designates several Multicultural Weeks where students can showcase the cultures of one country or region. Take the lead as an organizer or join in these celebrations of world culture as a performer. **It is the learning experience of a lifetime.**



Janani Sampath(India)
APS, Fourth Year Student

After three years in Global Business Leaders (GBL), I am the current Chief Executive Officer (CEO). We operate like a company with a board of directors and complete administration. We aim to provide members and APU students with opportunities to learn and practice essential skills. These include a business-oriented mind, leadership, teamwork, communication, and more.

APU has a lot of options for clubs and circles. My advice is to join each circle's open guidance session to see what the circle does and if it's right for you. Take your first semester as an opportunity to go out of your comfort zone and find new interests, like GBL!





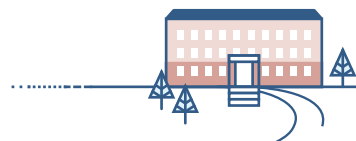
Over 100 student-led organizations on campus

- APU Karate Club
- APU Model United Nations
- APU Soccer Club
- APU Tea Ceremony Club
- Global Business Leaders
- Gospel★Soul
- Habitat APU
- K-Muse K-pop Dance Troupe
- Men's Lacrosse Team
- PRENGO Overseas Volunteering Club
- Rugby Club
- Subculture Research Circle
- Wadaiko Raku Japanese Drumming Club
- Yosha-koi Japanese Dance Troupe

Previous Multicultural Weeks

- Chinese Week
- Fashion Week
- Indian Week
- Indonesian Week
- Korean Week
- Love Pride
- Malaysian Week
- Mongolian Week
- Oceania Week
- Sri Lankan Week
- Taiwan Week
- Thai Week
- Vietnamese Week

YOUR HOME AWAY FROM HOME



Located on top of a small mountain at an altitude of 330 meters with beautiful natural surroundings, APU's campus overlooks the city of Beppu and its coastline. This amazing view is **just the beginning** of what you will find here on campus.

ON-CAMPUS FACILITIES/AMENITIES

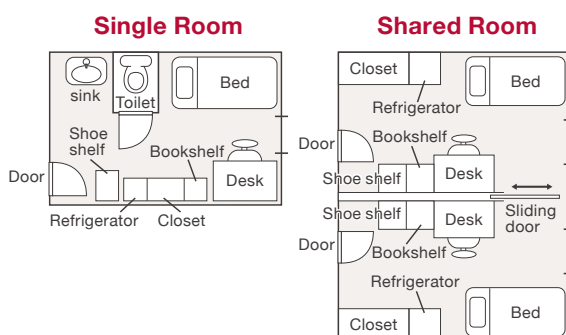
- State-of-the-art library and media center
- Student union building with a cafeteria, café, convenience store, Japanese tea ceremony room, meeting spaces, and music/dance studios
- Multipurpose auditorium
- Outdoor amphitheater
- Gymnasium and fitness center
- Multipurpose fields for soccer, rugby, lacrosse, baseball, etc.
- Basketball courts
- Tennis courts
- Health clinic and counseling room
- ATMs
- Postal services
- Local food trucks
- Indoor bus shelter with convenience store

NOT YOUR TYPICAL RESIDENCE HALL

With students from diverse cultures living under one roof, the time you will spend in our on-campus residence hall, AP House, is an **unforgettable experience**. This unique setting enables you to adapt to your new life in Japan and learn about the cultures of the world through interaction with peers while having a private space to concentrate on your studies. To assist you with this transition, each floor has experienced students selected as **Resident Assistants (RAs)** who will answer your questions and concerns and hold activities for you to join.

ROOM OPTIONS

You will live in either a single or shared room. Shared rooms allow you to have an even greater intercultural experience as you will be living with a Japanese roommate. These rooms are separated by a lockable sliding door for your privacy. **All rooms are fully furnished.**



AP HOUSE STATISTICS

378 shared rooms	932 single rooms	1,105 residents	52.9% international students
57 countries and regions represented	44 communal kitchens	49,000 JPY monthly rent including utilities	

These numbers are as of May 2019.

AP HOUSE FACILITIES

- Private shower rooms
- Japanese-style communal baths
- Computer rooms
- Study rooms
- Small convenience store
- 24-hour security
- Indoor recreation facilities like billiards
- Outdoor basketball courts
- Air conditioning unit in each room
- Wi-Fi available in all rooms



Library



Bus terminal lounge



Fitness facilities



Cafeteria



Student Union



Outdoor amphitheater



Co-op convenience store



Self-Access Learning Center (SALC)



AP House room



AP House kitchen

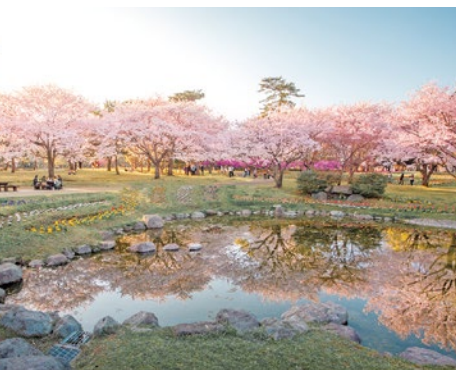
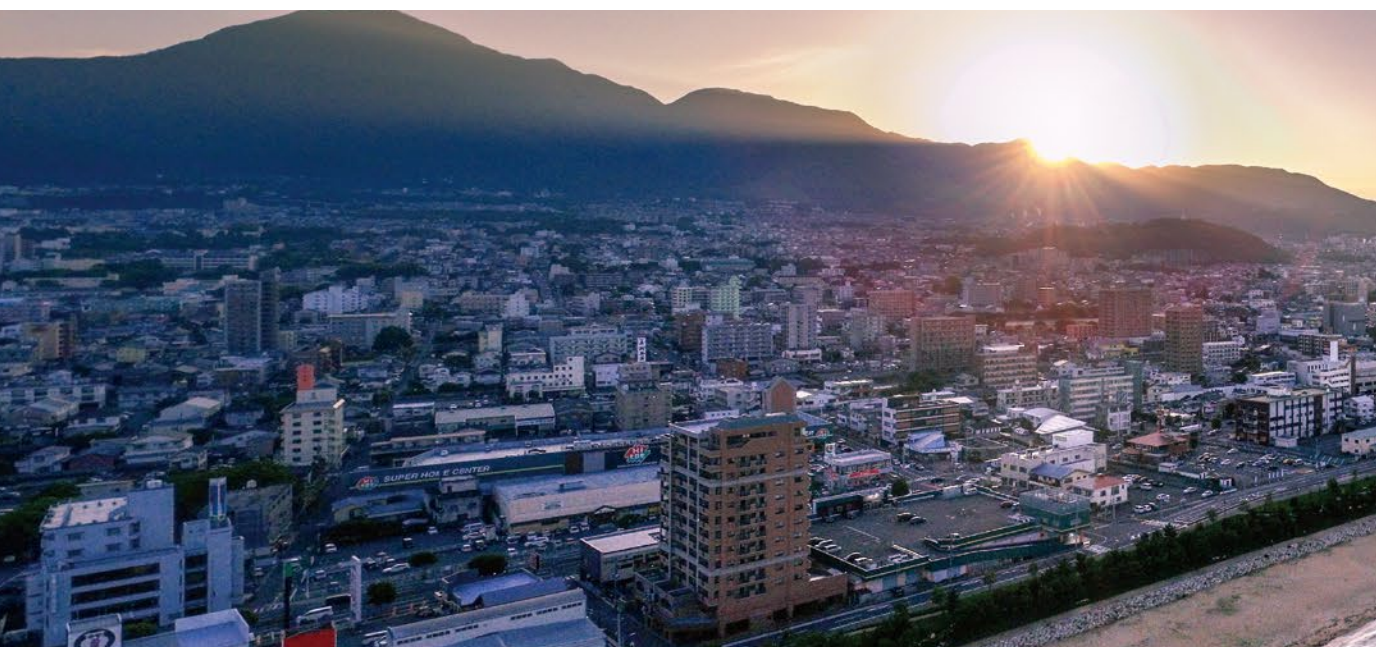
SETTLING IN

EXPERIENCE JAPAN

Japan is one of the most popular travel destinations thanks to its **rich traditions and modern culture combined with beautiful landscapes**. The country also maintains one of the highest safety records found anywhere in the world and is **the second most popular destination for people looking to move overseas**. For the ideal location to earn your university degree, look no further.

YOUR NEW HOMETOWN

APU is located in Kyushu, the southernmost major island of Japan, in the bayside city of Beppu. The city's **historic backstreets and abundance of hot spring baths** make it one of Japan's most visited cities by Japanese and international tourists alike. Beppu is a very safe city with a low cost of living compared to other popular study destinations in Japan and abroad. **Dive into the local culture** by participating in festivals, sporting events, and other activities alongside the welcoming community.



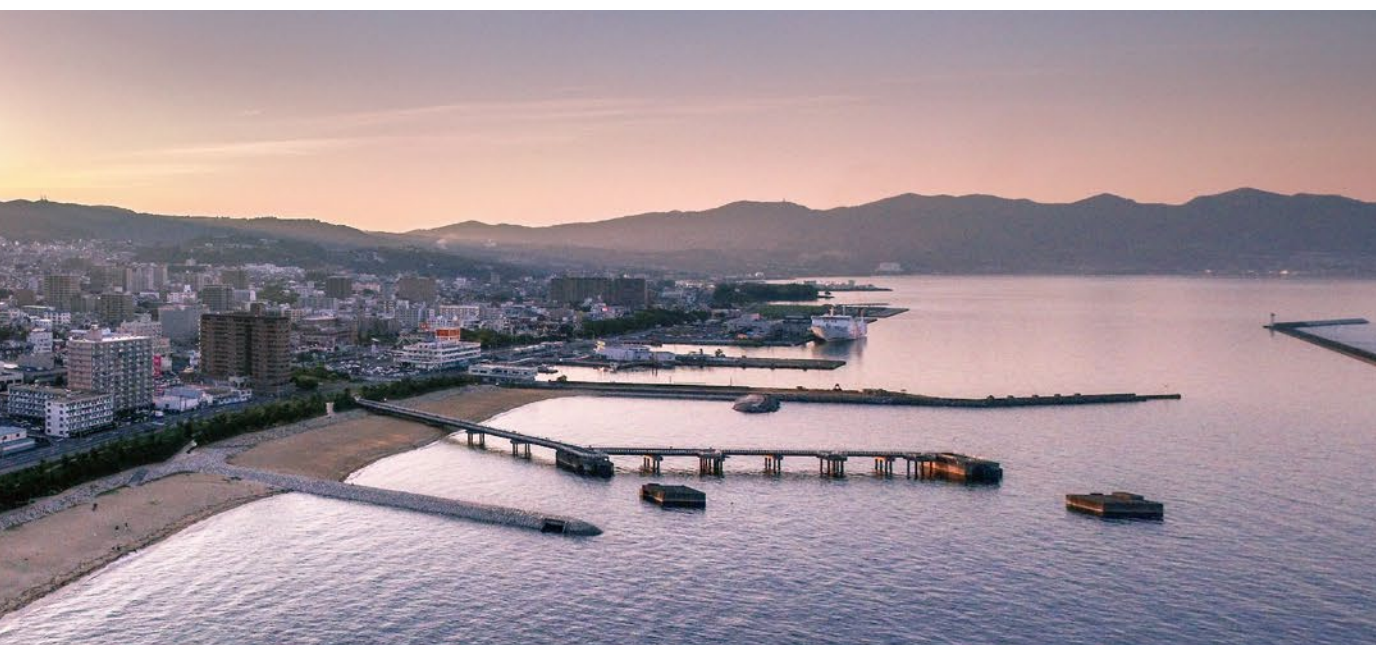


A COMFORTABLE LIFESTYLE

From your second year, you will move off campus into downtown Beppu and choose among living in an APU-owned residence hall, private apartment, or shared student housing. **APU provides support to help you make the transition from on-campus to off-campus accommodation.** You will find many entertainment options such as shopping malls, cafés, karaoke, bowling, and restaurants with international food. In addition, Beppu also has an abundance of clean drinking water, fresh air, seaside walking paths, sports facilities as well as medical centers to support your healthy lifestyle. Another advantage is that, as an APU student, you will be covered by Japan's National Health Insurance.

ALL IN A DAY'S WORK

Part-time jobs are another option for you to **gain real world experience.** You are allowed to work on or off campus for up to 28 hours a week during the semester and 40 hours a week during vacations. APU offers to help you obtain the correct work permit before you start to work. Please note that availability of part-time work may vary. Additionally, while on-campus jobs may not require Japanese language ability, off-campus jobs often require at least a conversational level of Japanese.



BEPPU AT A GLANCE

114,992

total residents

3,606

international
residents

2,217

hot springs

1,374 METERS

Tsurumidake,
Beppu's tallest mountain

NO1 NO2

in Japan in the world
for the amount of hot spring water



AVERAGE TEMPERATURE

JANUARY

5°C / 41°F

APRIL

14°C / 57°F

JULY

28°C / 82°F

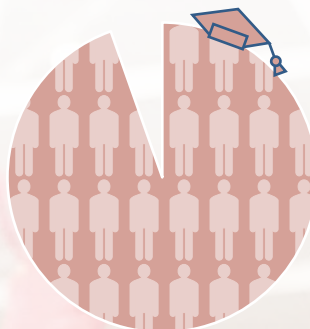
OCTOBER

20°C / 68°F

CREATING A BRIGHTER TOMORROW

TESTING THE WATERS

Gain insight into the working world by joining one of APU's internship programs, business competitions, or joint projects with external organizations, and directly **connect your studies to your career goals**. Through this, you will also have the chance to **create invaluable networks with professionals at the top of their fields**. There are specific programs for which you can earn academic credits as well.



96%

Employment
success rate
at the time of
graduation

EXPLORE YOUR OPTIONS

With the knowledge, language ability, and experience you obtain at APU, **there are no limits to where your degree will take you**. APU's Career Office worked with approximately 200 companies and organizations to specifically recruit APU students for a variety of **employment positions in Japan and beyond**. Many students pursue higher education after graduation, and a number also go on to establish their own businesses in Japan and overseas.

Sample of employers

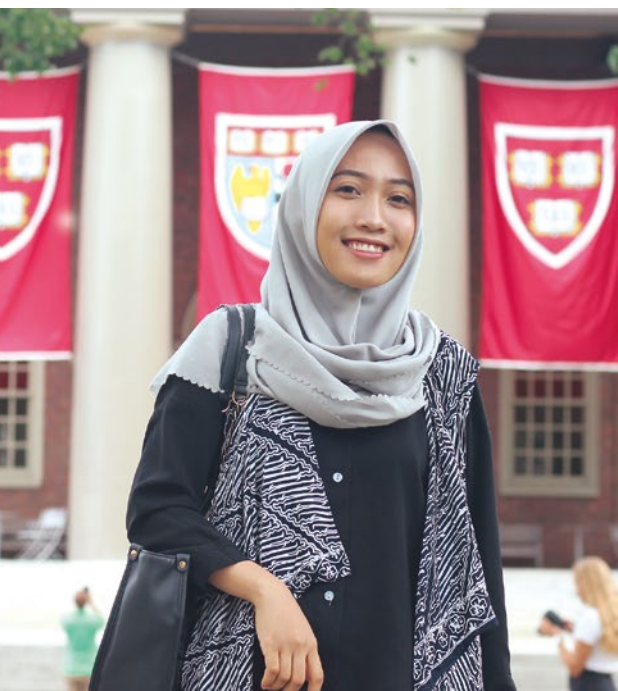
Accenture Japan Ltd.
Amazon Japan G.K.
Apple Japan, Inc.
BANDAI NAMCO Entertainment Inc.
Bloomberg L.P.
Daio Paper Corporation
Deloitte Tohmatsu Consulting LLC
Fujitsu Limited
Hilton Tokyo
Hitachi Chemical Co., Ltd.
Honda Trading Corporation
KOSÉ Corporation
KPMG Tax Corporation
Kumon Institute of Education Co., Ltd.
Mizuho Financial Group, Inc.
NTT Data Corporation
Panasonic Corporation
Resona Bank, Limited.
Robert Walters Japan KK
Sheraton Hotels and Resorts
SMBC Trust Bank Ltd.
SoftBank Corp.
Sumitomo Mitsui Auto Service Company, Limited
Unilever Japan K.K.
Yanmar Co., Ltd.

Sample of graduate schools

The University of Melbourne, Australia
University of British Columbia, Canada
Copenhagen Business School, Denmark
ESSEC Business School, France
Trier University, Germany
The Chinese University of Hong Kong, Hong Kong
Trinity College Dublin, Ireland
Kyoto University, Japan
University of Tsukuba, Japan
The University of Tokyo, Japan
Ewha Womans University, Korea
Yonsei University, Korea
Leiden University, Netherlands
BI Norwegian Business School, Norway
Nanyang Technological University, Singapore
Singapore Management University, Singapore
Lund University, Sweden
International University in Geneva, Switzerland
Chulalongkorn University, Thailand
London School of Economics and Political Science, UK
University College London (UCL), UK
University of Oxford, UK
Harvard University, USA
The Ohio State University, USA
University of Washington, USA



ALUMNI JOURNEYS



APU

**MASTER'S AT HARVARD
GRADUATE SCHOOL OF EDUCATION**

Indah Shafira Zata Dini (Indonesia)

APS, Graduated in 2019

Lives in: United States of America

I joined a number of student organizations, projects, and multicultural weeks, but the activity that brought the most significant personal growth for me was working with the president's office in a program to teach intercultural-mindfulness to Japanese business employees. Due to this and other experiences as both a teacher and a student, I found myself becoming more interested in the field of education. Deciding to pursue my studies further in graduate school, I received strong support from APU professors and fellow students, and I eventually decided on Harvard's Graduate School of Education. APU's unique environment allows you to develop your communication, multitasking, and time-management skills while interacting with people from different backgrounds. Make the most of these opportunities and share your strengths with those around you to grow together and achieve your goals.

APU

**UNITED NATIONS DEVELOPMENT
PROGRAMME (UNDP) THAILAND**

Pongpanott Deekong (Thailand)

APS, Graduated in 2017

Lives in: Thailand

In early 2020, I started working as a Social and Policy Innovation Specialist at the UNDP Thailand Country Office. I lead a program that works towards accelerating the impact of innovation and knowledge exchange between countries in the Asia Pacific. Additionally, in 2019, I founded Leeway, an organization that raises awareness on the importance of play in childhood development. The cultural knowledge and skills I gained from not only being an APU student but also from being a resident assistant (RA) have helped me succeed in my professional career, as I am quite used to working with people from various cultural backgrounds. My time at APU also shaped me to become who I am today and helped me realize what it is I want to do in my life: to shape the world into a better place and lead a life with empathy for others as we are all human.





APU

DOLOON BOLDOG LLC

Oyun Samdan (Mongolia)

APM, Graduated in 2008

Lives in: Mongolia

When I was a student at APU, professors would tell us that we were fortunate to be learning in the international environment APU offers, but at the time I didn't fully realize what they meant. Now, in my current job as the CEO of a kitchen and home furniture company, I recognize the advantages I have gained from studying at APU. I was able to build a network with other APU alumni from around the world which, especially in this era, is an advantage in many careers. Through the interactions with Japanese businesses and organizations I work with, I have also been able to continue using the Japanese language skills I obtained at APU along with other principles such as being open-minded and respectful towards your peers. I believe that life itself is always a challenge, and a life without hurdles would be bland. So whatever path you choose in life, work hard to achieve your goals, and be passionate in what you do.

APU

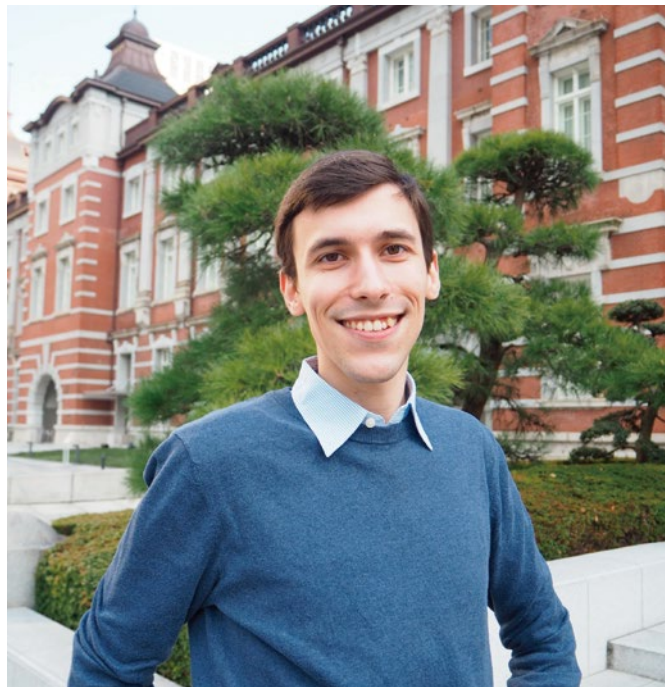
BLOOMBERG L.P.

Radoslav Tsvetanov Tsvetkov (Bulgaria)

APM, Graduated in: 2020

Lives in: Japan

After enrolling at APU, despite being the only Bulgarian student on campus, I didn't experience homesickness thanks to the open and friendly environment. In AP House, there was always someone you could cook with, study with, or just have a movie night with. And in my current work at Bloomberg L.P. as a market data analyst, I actively utilize my multicultural and interpersonal skills developed in APU's environment. These allow me to collaborate effectively with colleagues and team members from offices in other countries. Even though I work for an international company, I am also constantly using my Japanese language skills to communicate with our local Japanese clients and provide customer service as a multilingual speaker. As an APU student, if you are not sure what you want to do or who you want to become, there will definitely be times when you will be inspired, as long as you are brave enough to expand your comfort zone.



FEES AND SCHOLARSHIPS

FEES FOR INITIAL YEAR OF STUDY*1



	FIRST YEAR	SECOND YEAR TRANSFER	THIRD YEAR TRANSFER
Program Duration	4 years	3 years	2 years
Admission Fee	200,000 JPY (1,890 USD)	200,000 JPY (1,890 USD)	200,000 JPY (1,890 USD)
Tuition	1,300,000 JPY*2 (12,287 USD)	1,500,000 JPY (14,177 USD)	1,500,000 JPY (14,177 USD)
Comprehensive Renters' Insurance	17,010 JPY (161 USD)	13,010 JPY (123 USD)	8,980 JPY (85 USD)
AP House Entrance Fee	228,000 JPY (April) / 203,500 JPY (September) (2,155 USD (April)/ 1,924 USD (September))		
AP House Monthly Rent	49,000 JPY (463 USD)	49,000 JPY (463 USD)	49,000 JPY (463 USD)

*1 All the fees above are subject to change.

US dollar equivalents are for REFERENCE ONLY, based on the rate of 1:106

*2 Tuition for the second to the fourth year of study is 1,500,000 JPY per year.

Admission Fee

The admission fee is **required for all students**, regardless of scholarship amount, and is usually due within approximately four weeks after admission result notification. This fee is **non-refundable** under any circumstance.

Tuition

A payment of your first semester tuition is due in order to complete your enrollment procedures. The remaining tuition will be due at a later time. For APU Tuition Reduction Scholarship recipients, this amount will decrease based on the percentage awarded.

Comprehensive Renters' Insurance

This insurance is required for all students for protection in case of liability and is required for all students, regardless of scholarship amount.

AP House Entrance Fee

This fee is required for all students, regardless of the scholarship amount. The fee includes a moving-in fee (32,000 JPY), security deposit (98,000 JPY), and rent (49,000 JPY per month) for two months for April enrollees and for one and half months for September enrollees.

LIVING EXPENSES

Living expenses for a year (including rent listed above) is **estimated by APU** to be 1,000,000 JPY (approx. 9,433 USD). This amount is what is required for financial statements, but may differ depending on each student's personal spending decisions.

SCHOLARSHIPS

APU awards Tuition Reduction Scholarships to outstanding international students. These cover 30%, 50%, 65%, 80%, or 100% of your **tuition for the standard period of time until graduation**. You are eligible to apply if you will hold a student visa while studying at APU. Additional scholarships are available after enrollment. Scholarships at APU are primarily merit-based.



APPLY TO APU



APPLICATION PERIOD

April 2022 enrollment:

June 1, 2021 (Tue) — October 13, 2021 (Wed)

September 2022 enrollment:

September 1, 2021 (Wed)—March 23, 2022 (Wed)

If you reside in Japan, China, India, Indonesia, Korea, Thailand, or Viet Nam, visit the admissions website for additional information.

Transfer applicants have separate application requirements and deadlines.

Please check the admissions website for more details.

https://admissions.apu.ac.jp/how_to_apply/transfer_students/

MINIMUM REQUIREMENTS FOR ADMISSION

Education:

First year applicants: 12 years or equivalent of standard education

Transfer applicants: 13-14 years or equivalent of standard education

Minimum language test score for English-basis applicants:

TEST	FIRST YEAR	TRANSFER
IELTS	6.0* ¹	6.5* ²
TOEFL iBT® Test* ³	75	85
TOEIC® L&R Test* ³	750	800
Cambridge English Language Assessment	169	176
PTE Academic	50	58
EIKEN	Pre-1	1

*¹ You must have a minimum of 5.5 in each section.

*² You must have a minimum of 6.0 in each section.

*³ TOEIC, TOEFL, TOEFL iBT and TOEFL ITP are registered trademarks of Educational Testing Service (ETS). This publication is not endorsed or approved by ETS.

Minimum language test score for Japanese-basis applicants:

TEST	FIRST YEAR	TRANSFER
JLPT N1	100	110
JLPT N2	120	140
EJU (Japanese)	Listening and Listening-Reading and Reading 250 Writing 30	Listening and Listening-Reading and Reading 280 Writing 35

HOW TO GET STARTED

Create an account in our **online application system**, complete your online application, upload your documents, pay your application fee, and complete your online assessment. **Use the link below** to create your account!

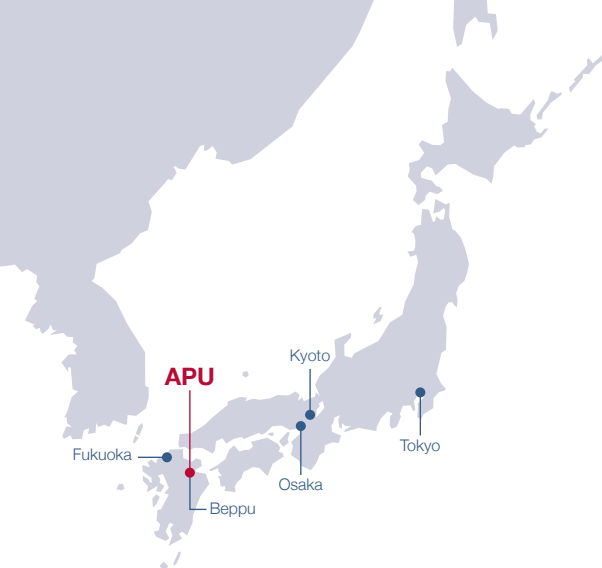
https://admissions.apu.ac.jp/apply_online/



For more information regarding the interview, online assessment, and your estimated deadlines, **refer to the how to apply page** on our admissions website below.

https://admissions.apu.ac.jp/how_to_apply/





CONTACT US

Ritsumeikan Asia Pacific University
Office of International Admissions
1-1 Jumonjibaru, Beppu, Oita, 874-8577 Japan
Tel: +81-977-78-1119 (English)
+81-977-78-1200 (Japanese)
<https://admissions.apu.ac.jp/>

Email: welcome@apu.ac.jp

Ritsumeikan.APU

APUAdmissionsOffice

ritsumeikanapu



APU OVERSEAS OFFICES

CHINA

Ritsumeikan Liaison Office –
Shanghai Jiao Tong University D, 18F Shentong Xinxin
Guangchang, No. 55, Huaihai West Rd.
Shanghai City 200030 China
Tel: +86-21-6283-5104
Email: apuchina@apu.ac.jp

INDONESIA

APU Indonesia Information Center
C/O MARQUEE, Mayapada Tower I, 11th Floor, Jl.Jend.
Sudirman Kav. 28 Jakarta 12920 Indonesia
Tel: +62-21-5289-7328/7392
Email: apu-ina@apu.ac.jp

KOREA

APU Korea Office
#608, Halla Classic Officetel 6th Floor, 23 Gangnam Daero
84 Gil, Gangnam-gu, Seoul 06233 Korea
Tel: +82-2-564-3425/3426
Email: hello@ritsapu-kr.com

TAIWAN

APU Taiwan Office
8F., No.560, Sec.4, Zhongxiao E. Rd.,
Xinyi Dist., Taipei City 110, Taiwan
Tel: +886-2-7718-8685
Email: taipei@apu.ac.jp

THAILAND

APU Thailand Office
Room 1015, 10th Floor, Serm-Mit Tower 159/16 Soi Asoke,
Sukhumvit 21 Road Wattana, Bangkok 10110 Thailand
Tel/Fax: +66-2-665-7145
Email: thailand@apu.ac.jp

VIET NAM

APU Viet Nam Office
238/2B Nguyen Thi Minh Khai St.,
Ward 6, District 3, Ho Chi Minh City, Viet Nam
Tel: +84-28-39-30-6432
Email: vietnam@apu.ac.jp

APU OVERSEAS REPRESENTATIVES

HONG KONG AND MACAU

Mr. Daniel Smiley
Tel: +852-6858-5902
Email: smileyd@apu.ac.jp

INDIA

(For applicants residing in Delhi/NCR)
Ms. Deepti Singh Ritsumeikan APU Delhi Office
18A103 WeWork, Berger Delhi One Floor 19, Sector 16B,
Noida Uttar Pradesh- 201301, INDIA
Tel: +91-73037-86004
Email: d-india@apu.ac.jp

INDIA

(For applicants residing outside Delhi/NCR)
Ms. Ishana Malkani 5/A Court Chambers,
35 New Marine Lines, Mumbai, India 400020
Tel: +91-98-2187-4565
Email: m-india@apu.ac.jp

SRI LANKA

Dr. Harin Gunawardena
183/1, Nawala Road, Nugegoda, Sri Lanka
Tel: +94-714251314

UNITED STATES AND CANADA

Ms. Bethany Kanda
Tel: +1 (808) 476-0131
Email: apu-usa@apu.ac.jp



TOP GLOBAL
UNIVERSITY
JAPAN



STUDY in JAPAN