

Shape your world



Ritsumeikan
Asia Pacific University



RITSUMEIKAN
**ASIA PACIFIC
UNIVERSITY** 2021

BEPPU, JAPAN

An aerial photograph of the Ritsumeikan Asia Pacific University (APU) campus. The campus is situated on a green hillside, featuring several large, modern academic buildings with red brick facades. A large baseball field and a soccer field are visible. The campus is surrounded by lush greenery and a winding road. In the background, a dense urban area of a city is visible, extending to the coast where a harbor and ships can be seen under a clear blue sky.

2	SHAPE YOUR WORLD
3	APU BY THE NUMBERS
5	ACADEMICS
7	COLLEGE OF INTERNATIONAL MANAGEMENT
9	COLLEGE OF ASIA PACIFIC STUDIES
11	SUBJECT LIST
13	EXCHANGE PROGRAMS
15	EXTRACURRICULAR ACTIVITIES
17	STUDENT LIFE
21	CAREERS
23	ALUMNI JOURNEYS
25	ADMISSIONS GUIDE

SHAPE YOUR WORLD

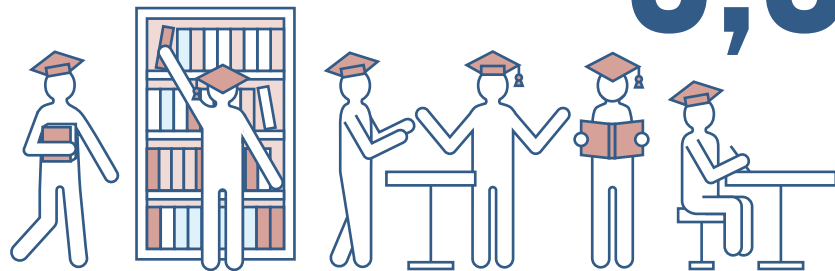
FREEDOM, PEACE, HUMANITY.
INTERNATIONAL MUTUAL UNDERSTANDING.
THE FUTURE SHAPE OF THE ASIA PACIFIC REGION.

Ritsumeikan Asia Pacific University (APU) first opened its doors in 2000 with these ideals as its foundation. What emerged was an entirely new multicultural learning environment with the aim of creating global leaders across all fields and industries. In these past twenty years, this goal has not only been reached but exceeded as thousands of students from over one hundred fifty countries have come together to learn intercultural coexistence, responsible business leadership, and sustainable development. With this well-rounded base of global knowledge, APU students and graduates are actively finding solutions to the issues our world is facing.

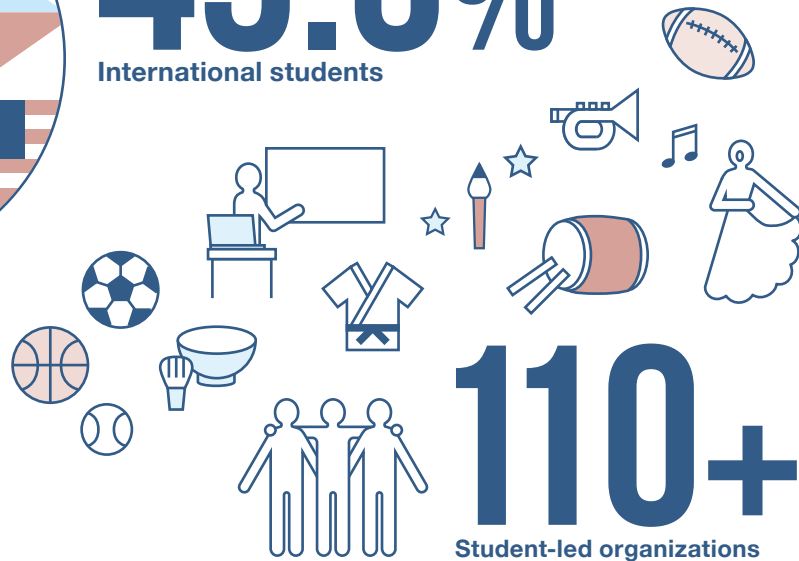
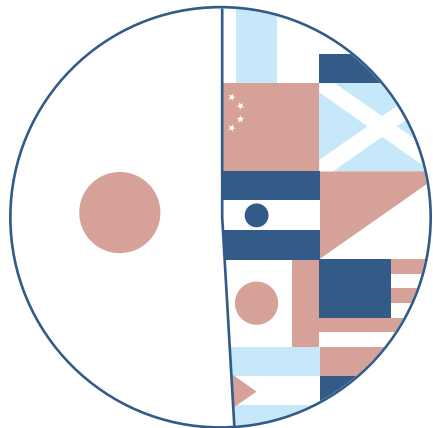
**Your path to shape your own world and
the world around you starts at APU.**

APU BY THE NUMBERS

5,648
Total students



49.5%
International students



110+
Student-led organizations

92

Countries and regions
represented by students



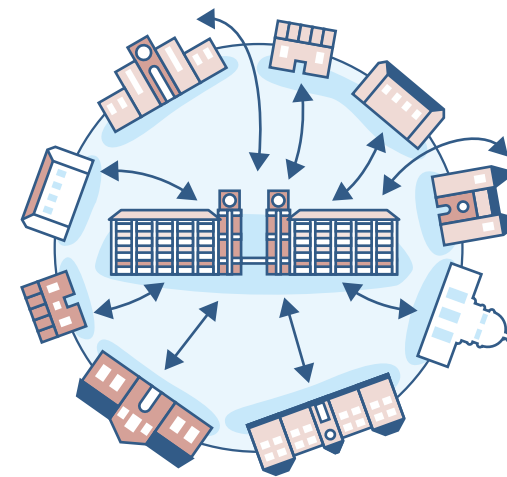
22

Countries and regions
represented by faculty



152

Countries and regions
represented by alumni

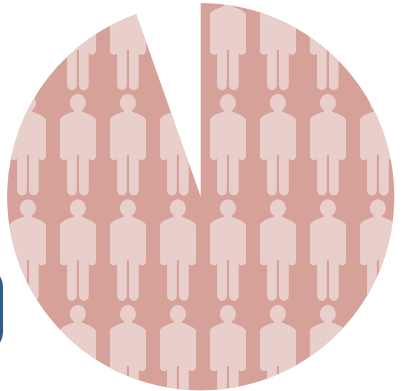


142

Exchange
partners
in 42 countries and
regions

96.2%

Employment success rate



EDUCATION THAT INSPIRES YOU



Drusila Bento Gomes (Angola)

APS, Third Year Student

I came to Japan with aspirations of self-discovery and growth. Ever since I was younger, I hoped to one day go far beyond the physical and intangible borders that limited my understanding of the world. APU provides me the platform to uncover new cultures, people, and customs among other aspects that make Japan and APU a unique place. I am able to cultivate myself both academically and on a personal level. The many meaningful relationships that I have developed during my time at APU are definitely ones I will carry with me even after I leave and have made my time here in Japan much more fulfilling.

OUR PROGRAMS



COLLEGE	AREAS OF STUDY
COLLEGE OF INTERNATIONAL MANAGEMENT (APM) <i>Bachelor of Business Administration (BBA)</i>	<ul style="list-style-type: none">• Innovation and Economics• Marketing• Strategic Management and Organization• Accounting and Finance
COLLEGE OF ASIA PACIFIC STUDIES (APS) <i>Bachelor of Social Science (BSocSc)</i>	<ul style="list-style-type: none">• Environment and Development• Hospitality and Tourism• International Relations and Peace Studies• Culture, Society and Media

You need at least 124 academic credits in order to graduate. Average time until completion is four years. There are also options to graduate in three or three and a half years.

ARE YOU READY TO MAKE A POSITIVE IMPACT ON A GLOBAL LEVEL?

BEYOND THE TRADITIONAL CLASSROOM SETTING

Learning at APU is not simply a matter of reading books and attending lectures. APU's interactive style of education creates daily opportunities for lively discussions and group work with students of different cultural and socioeconomic backgrounds in a variety of classroom settings. We invite you to take your knowledge, turn it into action, and make an impact out in the world that exists beyond the classroom. From field studies, exchange programs, conferences, and academic competitions, to community outreach and internships, get involved in the vast range of opportunities that await you at APU.

BECOME MULTILINGUAL

Knowing more than one language is not a goal for our students—it's a requirement. Studying your degree in English means you will also be required to learn Japanese and vice-versa. Want to add another language to your repertoire? APU offers additional language courses in the Asia Pacific languages of Chinese, Korean, Malay/Indonesian, Spanish, Thai, and Vietnamese. Acquire another language and you will have a significant advantage in your future career whether it is based in your home country, Japan, or another location.

ENGAGE WITH DEDICATED FACULTY

Highly qualified faculty from twenty-two countries, many of whom have real-world experience, bring a new dimension of practical learning to the classroom. Learn about the latest issues affecting your world from esteemed practitioners who have honed their skills at the cutting edge of innovation over the decades.

COLLEGE of INTERNATIONAL MANAGEMENT [APM]

BACHELOR OF BUSINESS ADMINISTRATION (BBA)



Cultivate your own global perspectives, business ethics, and problem-solving skills in APM to join the next generation of international business leaders. As a student in APM, you will begin your studies tackling core management concepts and then branch out into your specialized field of interest.

The College of International Management is accredited by the Association to Advance Collegiate Schools of Business (AACSB International), which is widely regarded as the highest level of accreditation for business schools worldwide.

AREAS OF STUDY

INNOVATION AND ECONOMICS

Learn about what generates innovation, how production is managed, and the underlying economic foundations of these concepts. The lectures are geared towards those wishing to contribute to global development through business or policy-making.

MARKETING

The theories and methods needed to successfully provide goods and services to the global market is the focus of courses in the marketing area of study. You will learn to identify the most effective method to link production to the final consumer and determine how much to provide at what cost.

STRATEGIC MANAGEMENT AND ORGANIZATION

These classes focus on how to set goals, establish principles, and develop methods for an organization so that it meets the challenges of evolving social needs. If you aim to become an entrepreneur or plan to take over your family business, this area of study is ideal for you.

ACCOUNTING AND FINANCE

The health of corporations is evaluated by the ebb and flow of money, which is known as accounting, while finance is the field concerned with raising and managing the funds necessary for corporate activities. Classes in this area of study enable you to gain a solid foundation in these demanding fields and exercise your knowledge in an international context.

Professor Lailani Laynesa Alcantara (The Philippines)

Ph.D. (Management), University of Tsukuba

The APM curriculum is AACSB-accredited and designed for students to become globally competitive. APM students are equipped with the knowledge and skills critical to becoming a well-rounded professional and are nurtured with values that foster leadership and social responsibility.

In APM, you have access to a diverse group of faculty with distinguished professional and academic backgrounds, engaging and innovative classes, and a global network of individuals who are inspired and committed to making a positive impact in their fields of work and in society. You can achieve success in your academic pursuits and chosen business discipline while engaging in dialogues with creative leaders and global visionaries.



Associate Professor Steven B. Rothman (United States)

Ph.D. (Politics), University of Oregon

With a diverse student body and faculty expertise, everyone in the College of Asia Pacific Studies is both a teacher and a learner. Across our cultural differences, diverse languages, and areas of specialization, faculty and students communicate with openness and curiosity to expand one another's knowledge, skills, and life experiences. This depth of interaction creates a space of immeasurable cultural learning unavailable anywhere else.

Our educational programs reach out beyond the classroom into numerous extracurricular activities in Japan and abroad. Such activities include field study programs, study abroad programs, and student-run educational clubs. Graduating with an APS degree means you leave with a solid knowledge of your chosen field, the life skills for success, and a global group of friends and colleagues that last a lifetime.



COLLEGE of ASIA PACIFIC STUDIES [APS]



BACHELOR OF SOCIAL SCIENCE (BSocSc)

In APS, we challenge you to tackle a vast array of global issues and develop new ways of thinking to face these obstacles head-on. You will gain a broad understanding of the political systems, economies, societies, and cultures of the Asia Pacific region while gathering relevant skills in language and information technology. APS prepares you for a wide variety of careers in the government, international organizations, media, the travel industry, and multinational corporations.

The Hospitality and Tourism area of study received the United Nations World Tourism Organization Tourism Education Quality Certification. This certification is granted to institutions that have high-quality tourism education, research, and training programs. APU is the second institution in Japan to receive the UNWTO TedQual Certification.

AREAS OF STUDY



ENVIRONMENT AND DEVELOPMENT

Profit-driven development has brought with it a raft of environmental and other issues, and sustainable development is an urgent issue for our times. Lectures in this area of study tackle the question of sustainable development in relation to policies and efforts to balance environmental conservation and economic development.

HOSPITALITY AND TOURISM

As cultural exchange and promotion of regional industries through tourism are vital to the development of the Asia Pacific region, this area of study explores multiple facets of tourism through the lenses of culture, society, and community. You will focus on the theory and practice of hospitality management as it relates to the tourism, health, service, and welfare industries.

INTERNATIONAL RELATIONS AND PEACE STUDIES

This area of study allows you to delve into the intricacies of conflict resolution and peace-building as well as cultivate the ability to deal with increasingly complex global issues. Your studies will draw from the three disciplines of international law, political science, and economics and help you gain the necessary critical thinking skills and a policy-oriented approach to succeed in the field.

CULTURE, SOCIETY AND MEDIA

This area of study enables you to analyze the societies, cultures, and values of the Asia Pacific to deepen your understanding of the issues this region faces. You will gain a global perspective, fundamental media skills, and the ability to view societal issues from several angles.

SUBJECT LIST



This list consists of subjects for the 2019 academic year. Please note that this subject list may change for the 2021 academic year.

LIBERAL ARTS SUBJECTS

APM Bridge Program
APS Bridge Program
Bioethics
Career Design I • II • III • IV
Computer Literacy
Constitution of Japan
Culture and Society of the Asia Pacific
Data Mining
Database Systems
Economy of the Asia Pacific
Environmental Science
Geography of the Asia Pacific
Health Science
History of the Asia Pacific
Intercultural Fieldwork I • II
Internet Technology Integration
Internship
Introduction to Culture and Society
Introduction to Development Studies

Introduction to Economics
Introduction to Environmental Studies
Introduction to GIS
Introduction to Intercultural Communication
Introduction to International Relations
Introduction to Media Studies
Introduction to Peer Leader Training
Introduction to Political Science
Introduction to the Internet
Introduction to Tourism and Hospitality
Japanese Art of Flower Arrangement
Japanese Art of Tea Ceremony
Japanese Culture and Society
Japanese Economy
Japanese Geography
Japanese History
Languages of the Asia Pacific
Legal Studies
Logical Thinking and Framework

Media Production Lab
Multicultural Collaborative Workshop
Negotiation Skills
Overseas Learning Design
Peace, Humanity and Democracy
Peer Leader Training I • IIA • IIB
Programming
Psychology
Religions of the Asia Pacific
Special Lecture (ICT)
Special Lecture (Japanese Studies)
Special Lecture (Liberal Arts Subject)
Statistics
Studies of Multicultural Comparison
Study Skills and Academic Writing
Traditional Japanese Arts
Volunteer Activities

LANGUAGE EDUCATION SUBJECTS

Japanese Language Classes

Business Communication in Japanese A • B
Career Japanese
Japanese Course
(Foundation/Intermediate/Pre-Advanced/
Advanced)
Japanese for Lectures
Japanese Project A • B • C • D • E • F
Language and Culture in Japan
Language and Social Topics in Japan

English Language Classes

English Course
(Elementary/Pre-Intermediate/Intermediate/
Upper-Intermediate/Advanced)

English for Business Presentations
English for Business Writing
English for Discussion and Debate
English for Journalism
English Project 1 • 2
Extensive Reading in English of the Media

Asia Pacific Language Classes

Chinese I – IV
Korean I – IV
Malay/Indonesian I – IV
Spanish I – IV
Thai I – IV
Vietnamese I – IV

Specific Language Classes

English Proficiency Preparation Course I • II • III
Intensive Language Learning Overseas
Introduction to Asia Pacific Languages
Introduction to Official Languages of the United Nations I – French
Introduction to Official Languages of the United Nations II – Russian
Introduction to Official Languages of the United Nations III – Arabic
Japanese Language Teaching
Japanese Linguistics for Japanese Language Education
Special Lecture (Language Education Subject)
TESOL

APM SUBJECTS

Required Subjects

Accounting I
Advanced Mathematics
Business Ethics
Finance
Fundamental Mathematics
Global Management (Capstone)
Introduction to Management
Introduction to Marketing
Legal Strategy in Business
Management of Human Resources and Organizational Behavior
Production Management

Strategic Management & Organization (SMO)

Advanced Human Resource Management
Advanced Organizational Behavior
Brand Management
Entrepreneurship
Family Business Management
International Logistics
International Transactions
Service Management
Special Lecture in Strategic Management & Organization
Strategic Management
Supply Chain Management

Accounting & Finance (AF)

Accounting II
Advanced Accounting
Auditing
Corporate Finance
Cost Accounting
Financial Accounting I • II
Financial Market and Institutions
International Accounting
International Finance
Investment and Securities Analysis
Investment Strategy
Management Accounting
Special Lecture in Accounting
Special Lecture in Finance

Innovation & Economics (IE)

Asian Economy
Development Economics
Entrepreneurship
International Economics
International Political Economy
Macroeconomics
Microeconomics
Operations Research
Product Development
Special Lecture in Economics
Special Lecture in Innovation
Technology Management

Marketing (M)

Brand Management
Consumer Behavior
E-Commerce
International Logistics
International Marketing
Marketing Research
Product Development
Promotion and Sales Management
Service Management
Special Lecture in Marketing
Supply Chain Management

APM Common Subjects

APM Field Study
Business Case Analysis & Communication
Business Data Analysis
Business Internship
Field Research Project
Management Information Systems
Social Entrepreneurship
Special Lecture (Management)

Seminar Subjects

Major Seminar I • II
Research Seminar
Undergraduate Thesis

APS SUBJECTS

Core Subjects

Introduction to APS
Introduction to Area Studies

Environment & Development (ED)

Biodiversity
Community Based Tourism
Community Development
Conflict and Development
Development Economics
Development Policy
Development Sociology and Anthropology
Ecotourism
Environment and Society
Environmental Communication
Environmental Economics
Environmental Modeling and Analysis
Environmental Policy
Field Study for Environment and Development
GIS and Remote Sensing
Global Environmental Issues
Industrial Ecology
International Cooperation
International Economics
International Organizations
NPO/NGO Studies
Preliminary Seminar for Environment and Development
Politics of Development
Project Management in Development
Resource Management
Special Lecture in Environment and Development
Urban Environment and Development

Culture, Society & Media (CSM)

Cultural Anthropology
Cultural Studies
Education and Society
Ethnicity and the Nation State
Field Study for Culture, Society and Media
Gender Studies
Global History
Global Media and Conflict
Globalization and Law
Globalization and Regionalism
History of Japanese Foreign Relations
Identity and Politics
Language and Society

Media and Culture
Media and History
Media and Law
Media and Politics
Multiculturalism and Society
New Media and Society
NPO/NGO Studies
Preliminary Seminar for Culture, Society and Media
Religion and Belief
Social Psychology
Social Stratification
Social Theory
Sociology of Organizations
Special Lecture in Culture, Society and Media
The Humanities and Modernity
Transnational Sociology

Hospitality & Tourism (HT)

Advanced Human Resource Management
Advanced Organizational Behavior
Agri-heritage and Tourism
Community Based Tourism
Cultural Anthropology
Culture and History of Tourism
Destination Marketing and Management
Ecotourism
Event and Festival Management
Field Study for Tourism and Hospitality
Health and Wellness Tourism
Heritage Tourism
Hospitality Management
Hospitality Marketing
MICE Tourism Industry
Operations Research
Preliminary Seminar for Tourism and Hospitality
Project Management in Development
Resort Development
Sociology of Tourism
Special Lecture in Tourism and Hospitality
Tourism and Hospitality Law
Tourism and Social Media
Tourism Development and Planning
Tourism Economics
Travel Industry

International Relations & Peace Studies (IRP)

Comparative Political Economy of the Asia Pacific
Conflict and Development
Development Policy
Ethnicity and the Nation State
Field Study for International Relations and Peace Studies
Foreign Policy of Japan
Geo-Politics and Post Cold War Conflicts
Global Issues and Policies
Global Media and Conflict
Globalization and Law
Globalization and Regionalism
History of International Politics
History of Japanese Foreign Relations
Human Rights
Identity and Politics
International Conflict Resolution
International Cooperation
International Law
International Organizations
International Political Economy
International Relations in the Asia Pacific
International Relations Theory
Media and Politics
Peace Studies
Political Theory
Politics of Development
Preliminary Seminar for International Relations and Peace Studies
Regional Systems in the Asia Pacific
Special Lecture in International Relations and Peace Studies
Strategic Decision Making
Violence and Terrorism

APS Common Subjects A • B

APS Field Study
Area Studies
Field Research Project
Special Lecture (Asia Pacific Studies)

Seminar Subjects

Field Research Project
Graduation Research I • II
Introduction to Research Methods
Major Seminar I • II



*Some courses are cross-listed in more than one area of study.

STARTING OUT

Your four-year path to global citizenship begins with intensive Japanese language study and foundation courses for your area of study. These required classes will allow you to quickly adapt to your new life in Japan and prepare you for an international career after graduation. You will then delve deeper into your studies through specialized courses and seminars, and will also have the option for internships, field studies, international exchanges, on- and off-campus programs, and thesis research.

Sample weekly schedule for a first semester student enrolling in September*

MONDAY	TUESDAY	WEDNESDAY	THURSDAY	FRIDAY
• Japanese Foundation I • Japanese Foundation II • Japanese Foundation III	• Japanese Foundation I • Japanese Foundation II • Japanese Foundation III • Introductory class for your major	• Study Skills and Academic Writing Workshop • Multicultural Cooperative Workshop	• Japanese Foundation I • Japanese Foundation II • Japanese Foundation III	• Japanese Foundation I • Japanese Foundation II • Japanese Foundation III

*Please note that your schedule may be different based on your Japanese language placement exam result and class times for your semester of enrollment. Academic schedules are subject to change.

BROADEN YOUR HORIZONS

THE WORLD AT YOUR FINGERTIPS

Build your international portfolio by joining an exchange program for a semester or a year at one of our international or Japanese partner universities. Choose from 142 exchange partners in 42 countries. If you are awarded an APU Tuition Reduction Scholarship, it will still remain valid during your time on an exchange program.

TWICE THE CHALLENGE, TWICE THE REWARD

The only thing better than getting a degree from one international university is getting two degrees from two international universities at the same time. This option is available for both APS and APM students by signing up for one of APU's double degree programs. Double degree programs are available for APS students with Kyung Hee University in Korea, Salzburg University of Applied Sciences in Austria, or St. Edward's University in the United States. A double degree is available for APM students with the NEOMA Business School in France.



LIST OF PARTNER UNIVERSITIES

AFRICA

Egypt

The American University in Cairo

Kenya

United States International University

Morocco

Universite Internationale de Rabat

ASIA

Azerbaijan

ADA University

Brunei

Universiti Brunei Darussalam

China

Beijing Normal University-Hong Kong Baptist University United International College
Institute for Tourism Studies, Macao
University of Macau, Macao SAR,
The People's Republic of China
Xi'an Jiaotong-Liverpool University

China (Hong Kong)

City University of Hong Kong
Hong Kong Shue Yan University
The Chinese University of Hong Kong
The Hong Kong Polytechnic University
The Hong Kong University of Science and Technology
The University of Hong Kong

Indonesia

BINUS University
Gadjah Mada University
President University
Universitas Katolik Parahyangan

Korea

Kookmin University
Dongseo University
Ewha Womans University
Hanyang University
Korea University
Kyung Hee University
Pusan National University
Sogang University
Sookmyung Women's University
University of Ulsan
Yonsei University

Kyrgyzstan

American University of Central Asia

Malaysia

Taylor's University
University of Malaya
Universiti Sains Malaysia

Singapore

Singapore Management University

Taiwan

Feng Chia University
National Chengchi University
National Taiwan Normal University
Tamkang University
Tunghai University
Yuan Ze University

Thailand

Mahidol University International College
Thammasat University

The Philippines

Ateneo de Manila University
De La Salle University
University of the Philippines

Japan

Ritsumeikan University

EUROPE

Austria

Management Center Innsbruck
Salzburg University of Applied Sciences
University of Applied Sciences Upper Austria
University of Applied Sciences bfi Vienna

Belgium

University of Liege
Vesalius College Brussels

Croatia

Zagreb School of Economics and Management

Denmark

AARHUS BSS
The Copenhagen Business School

Finland

Laurea University of Applied Sciences
Tampere University of Applied Sciences (TAMK)
University of Helsinki

France

Ecole Supérieure des Sciences Commerciales d'Angers – School of Management
EM Normandie
ESC AMIENS
Excelia Group
Groupe KEDGE Business School
IESEG School of Management
Institut Supérieur du Commerce Paris
NEOMA Business School
Rennes School of Business

Germany

European University Viadrina Frankfurt (Oder)
Heinrich Heine University
Karlshochschule International University
Otto-von-Guericke-Universität Magdeburg
SRH University Heidelberg
University of Hohenheim
Zeppelin University

Greece

The American College of Greece

Iceland

University of Iceland

Italy

Ca' Foscari University of Venice
Universita Cattolica del Sacro Cuore
Università Commerciale Luigi Bocconi

Lithuania

Vilnius University

Norway

BI Norwegian Business School
Norwegian University for Science and Technology
University of Agder
University of Bergen

Poland

Kozminski University
Warsaw School of Economics

Portugal

ISCTE - Lisbon University Institute
LISBON School of Economics and Management

Romania

Romanian-American University

Slovak Republic

University of Economics in Bratislava

Spain

IE University
The Universitat Rovira i Virgili
University of Alicante

Sweden

Halmstad University
Linnaeus University
Lund University
Södertörn University

Switzerland

Zurich University of Applied Sciences

The Netherlands

The Hague University of Applied Sciences
Tilburg University
Universiteit Leiden

U.K.

Oxford Brookes University
The University of Hertfordshire
University of Kent
University of Leicester
Westminster Business School, University of Westminster

LATIN AMERICA

Argentina

Universidad Argentina de la Empresa

Mexico

Instituto Tecnológico Y De Estudios Superiores de Monterrey
Universidad de Monterrey

Peru

Universidad del Pacífico
Universidad San Ignacio de Loyola S.A.

NORTH AMERICA

Canada

HEC Montreal
Saint Mary's University
York University
The University of British Columbia
Université du Québec a Montreal
University of Lethbridge
University of Ottawa, Telfer School of Management
University of Waterloo

U.S.A.

American University
Carroll College
College of Staten Island, City University of New York
Florida International University
Georgia Institute of Technology
Grand Valley State University
James Madison University
Minnesota State University Moorhead
Nazareth College of Rochester
Old Dominion University
San Diego State University
St. Edward's University
University at Buffalo, The State University of New York
The University of New Mexico
University of North Florida
University of Oklahoma
University of Wyoming

OCEANIA

Australia

Charles Sturt University
James Cook University
La Trobe University
Victoria University

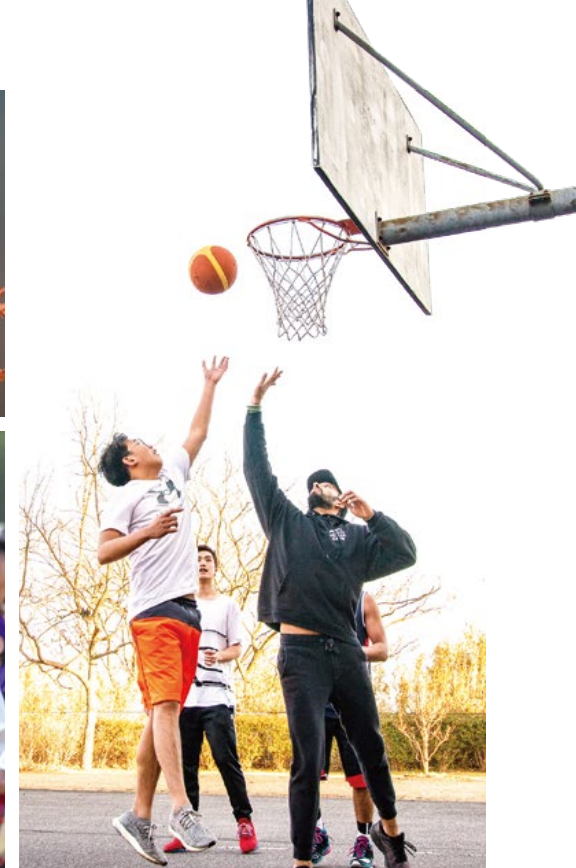


A CAMPUS LIKE NO OTHER



Take students originating from around ninety countries or regions and put them in a space that encourages experimentation and discovery. What results is a completely unique and vibrant community of students who not only embrace APU's multicultural atmosphere but thrive in it through a colorful array of activities, events, clubs, and societies. No matter what your interests are, APU has a place for you.

Throughout the school year, APU designates several Multicultural Weeks where students can showcase the cultures of one country or region. Take the lead as an organizer or join in these celebrations of world culture as a performer. It is the learning experience of a lifetime.



A few of the student-led organizations on campus (in alphabetical order)

APU Karate Club
APU Model United Nations
APU Soccer Club
APU Tea Ceremony Club
Global Business Leaders
Gospel★Soul
Habitat APU
K-Muse K-pop Dance Troupe
Men's Lacrosse Team
PRENGO Overseas
Volunteering Club
Rugby Club
Subculture Research Circle
Wadaiko Raku Japanese
Drumming Club
Yossha-koi Japanese
Dance Troupe

2019 Academic Year Multicultural Weeks (in alphabetical order)

Chinese Week
Fashion Week
Indian Week
Indonesian Week
Korean Week
Love Pride
Malaysian Week
Mongolian Week
Oceania Week
Taiwan Week
Thai Week
Vietnamese Week

YOUR HOME AWAY FROM HOME

Located on top of a small mountain at an altitude of 330 meters with beautiful natural surroundings, APU's campus overlooks the city of Beppu and its coastline. This amazing view is just the beginning of what you will find here on campus.

ON-CAMPUS FACILITIES/AMENITIES

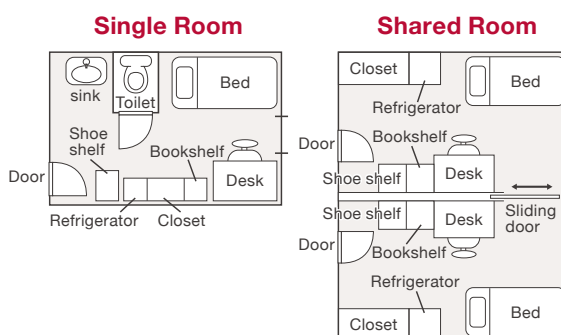
- State-of-the-art library and media center
- Student union building with a cafeteria, café, convenience store, Japanese tea ceremony room, meeting spaces, and music/dance studios
- Multipurpose auditorium
- Outdoor amphitheater
- Gymnasium and fitness center
- Multipurpose fields for soccer, rugby, lacrosse, baseball, etc.
- Basketball courts
- Tennis courts
- Health clinic and counseling room
- ATMs
- Postal services
- Local food trucks

NOT YOUR TYPICAL RESIDENCE HALL

With students from diverse cultures living under one roof, the time you will spend in our on-campus residence hall, AP House, is an unforgettable experience. This unique setting enables you to adapt to your new life in Japan and learn about the cultures of the world through interaction with peers while having a private space to concentrate on your studies. To assist you with this transition, each floor has experienced students selected as Resident Assistants (RAs) who will answer your questions and concerns and hold activities for you to join.

ROOM OPTIONS

You will live in either a single or shared room. Shared rooms allow you to have an even greater intercultural experience as you will be living with a Japanese roommate. These rooms are separated by a lockable sliding door for your privacy. All rooms are fully furnished.



AP HOUSE STATISTICS

378 shared rooms	932 single rooms	1,105 residents	52.9% international students
57 countries and regions represented	44 communal kitchens	49,000 JPY monthly rent including utilities	

AP HOUSE FACILITIES

- Private shower rooms
- Japanese-style communal baths
- Computer rooms
- Study rooms
- Small convenience store
- 24-hour security
- Indoor recreation facilities like billiards
- Outdoor basketball courts
- Air conditioning unit in each room
- Wi-Fi available in all rooms



Library



Food trucks



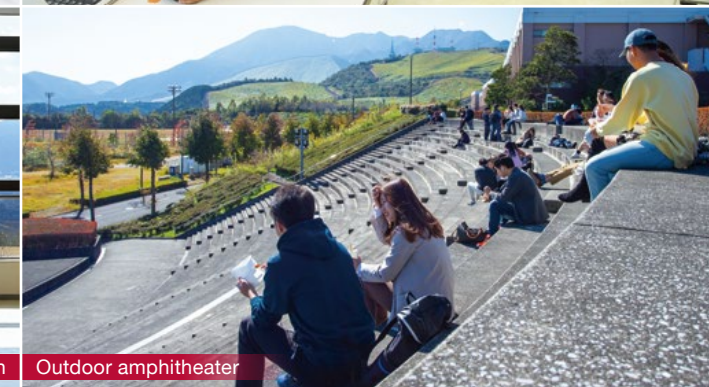
Fitness center



Cafeteria



Student Union



Outdoor amphitheater



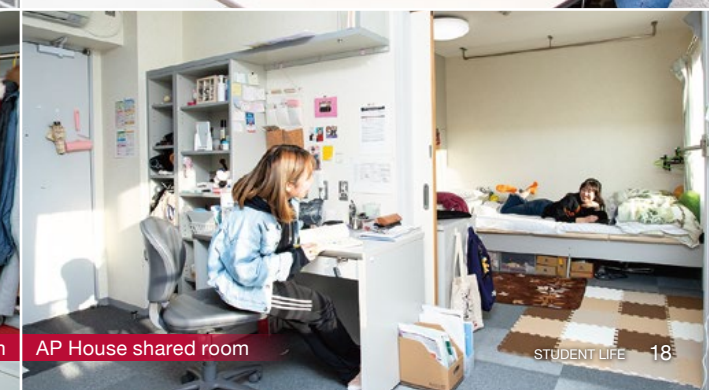
Co-op convenience store



AP House kitchen



AP House single room



AP House shared room

*Fees are subject to change.

SETTLING IN

EXPERIENCE JAPAN

Japan is not only the world's third largest economic center but also one of the most popular travel destinations thanks to its rich traditional and modern culture combined with beautiful landscapes. The country also prides itself on cutting-edge technology and maintaining one of the highest safety records found anywhere in the world. For the ideal location to earn your university degree, look no further.

YOUR NEW HOMETOWN

APU is located in Kyushu, the southernmost major island of Japan, in the bayside city of Beppu. The city's historic backstreets and abundance of hot spring baths make it one of Japan's most visited cities by Japanese and international tourists alike. Beppu is a very safe city with a low cost of living compared to other popular study destinations in Japan and abroad. Dive into the local culture by participating in festivals, sporting events, and other activities alongside the welcoming community.

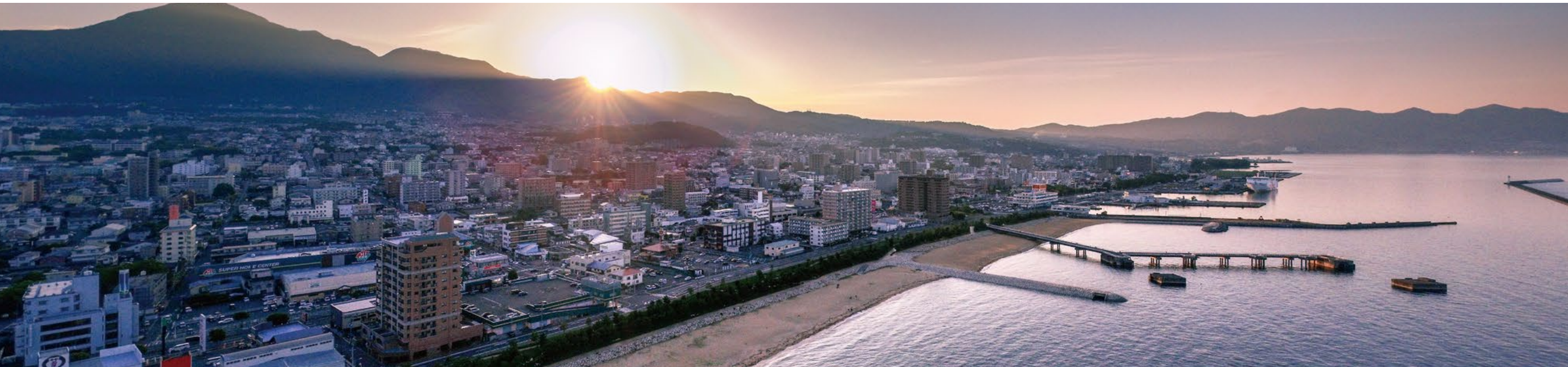


A COMFORTABLE LIFESTYLE

From your second year, you will move off campus into downtown Beppu and choose among living in an APU-owned residence hall, private apartment, or shared student housing. APU provides support to help you make the transition from on-campus to off-campus accommodation. You will find many entertainment options such as shopping malls, cafés, karaoke, bowling, and restaurants with international food. In addition, Beppu also has an abundance of clean drinking water, fresh air, seaside walking paths, sports facilities as well as medical centers to support your healthy lifestyle. Another advantage is that, as an APU student, you will be covered by Japan's National Health Insurance.

ALL IN A DAY'S WORK

Part-time jobs are another option for you to gain real world experience. You are allowed to work on or off campus for up to 28 hours a week during the semester and 40 hours a week during vacations. APU offers to help you obtain the correct work permit before you start to work. Please note that availability of part-time work may vary. Additionally, while on-campus jobs may not require Japanese language ability, off-campus jobs often require at least a conversational level of Japanese.



BEPPU AT A GLANCE			AVERAGE TEMPERATURE	
<div></div> <div>116,974</div> <div>total residents</div>	<div>4,387</div> <div>international residents</div>	<div>2,217</div> <div>hot springs</div>	<div>JANUARY</div> <div>5 °C / 41 °F</div>	<div>APRIL</div> <div>14 °C / 57 °F</div>
<div>1,374 METERS</div> <div>Tsurumidake, Beppu's tallest mountain</div>	<div>No 1</div> <div>in Japan</div>	<div>No 2</div> <div>in the world for the amount of hot spring water</div>	<div>JULY</div> <div>28 °C / 82 °F</div>	<div>OCTOBER</div> <div>20 °C / 68 °F</div>

CREATING A BRIGHTER TOMORROW

TESTING THE WATERS

Gain insight into the working world by joining one of APU's internship programs, business competitions, or joint projects with external organizations, and directly connect your studies to your career goals. Through this, you will also have the chance to create invaluable networks with professionals at the top of their fields. There are specific programs for which you can earn academic credits as well.

EXPLORE YOUR OPTIONS

With the knowledge, language ability, and experience you obtain at APU, there are no limits to where your degree will take you. Thanks in part to APU's Career Office, we have an unprecedented job placement rate of 96.2% for our students seeking employment, and in the past year alone, approximately 250 companies and organizations visited APU to specifically recruit our students for a variety of employment positions in Japan and beyond. This means you do not even need to leave campus to get your foot in the door. Many students pursue higher education after graduation, and a number also go on to establish their own businesses in Japan and overseas.

PATHWAYS AFTER GRADUATION

Sample of employers (in alphabetical order)

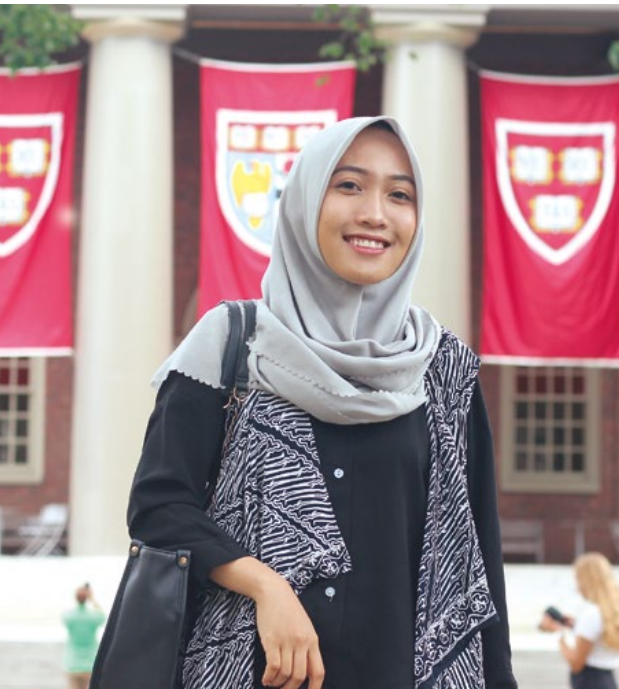
Accenture Japan Ltd
Amazon Japan G.K.
Apple Japan, Inc.
Daio Paper Corporation
Deloitte Tohmatsu Consulting LLC
FUJITSU LIMITED
Hilton Tokyo
Hitachi High-Tech Solutions Corporation
KOSÉ Corporation
Kumon Institute of Education Co., Ltd.
Kuraray Co., Ltd.
Mizuho Financial Group, Inc.
NTT DATA Corporation
Panasonic Corporation
Resona Bank, Limited.
Robert Walters Japan KK
Sheraton Hotels and Resorts
SoftBank Corp.
State Street Trust and Banking Co., Ltd.
Sumitomo Mitsui Auto Service Company, Limited
Sumitomo Mitsui Banking Corporation
Unilever Japan K.K.
UNIQLO CO., LTD.
Yanmar Co., Ltd.
YUSEN LOGISTICS CO.,LTD.



Sample of graduate schools (in country/region's alphabetical order)

The University of Melbourne, Australia
University of British Columbia, Canada
Dalhousie University, Canada
Copenhagen Business School, Denmark
Trier University, Germany
ESSEC Business School, France
The Chinese University of Hong Kong, Hong Kong
City University of Hong Kong, Hong Kong
Aoyama Gakuin University, Japan
Kyoto University, Japan
The University of Tokyo, Japan
Ewha Womans University, Korea
Yonsei University, Korea
Utrecht University, Netherlands
BI Norwegian Business School, Norway
National University of Singapore, Singapore
Singapore Management University, Singapore
Lund University, Sweden
Chulalongkorn University, Thailand
London School of Economics and Political Science, UK
The University of Manchester, UK
University of Oxford, UK
Harvard University, USA
The Ohio State University, USA
University of Michigan, USA

ALUMNI JOURNEYS



APU

MASTER'S AT HARVARD
GRADUATE SCHOOL OF EDUCATION

Indah Shafira Zata Dini (Indonesia)

APS, Graduated in 2019

Lives in: United States of America

I joined a number of student organizations, projects, and multicultural weeks, but the activity that brought the most significant personal growth for me was working with the president's office in a program to teach intercultural-mindfulness to Japanese business employees. Due to this and other experiences as both a teacher and a student, I found myself becoming more interested in the field of education. Deciding to pursue my studies further in graduate school, I received strong support from APU professors and fellow students, and I eventually decided on Harvard's Graduate School of Education. APU's unique environment allows you to develop your communication, multitasking, and time-management skills while interacting with people from different backgrounds. Make the most of these opportunities and share your strengths with those around you to grow together and achieve your goals.



APU

DOLOON BOLDOG LLC

Oyun Samdan (Mongolia)

APM, Graduated in 2008

Lives in: Mongolia

When I was a student at APU, professors would tell us that we were fortunate to be learning in the international environment APU offers, but at the time I didn't fully realize what they meant. Now, in my current job as the CEO of a kitchen and home furniture company, I recognize the advantages I have gained from studying at APU. I was able to build a network with other APU alumni from around the world which, especially in this era, is an advantage in many careers. Through the interactions with Japanese businesses and organizations I work with, I have also been able to continue using the Japanese language skills I obtained at APU along with other principles such as being open-minded and respectful towards your peers. I believe that life itself is always a challenge, and a life without hurdles would be bland. So whatever path you choose in life, work hard to achieve your goals, and be passionate in what you do.

APU

WORLD FOOD
PROGRAMME

UN
VOLUNTEERS

Dong Uk Shin (Korea)

APS, Graduated in 2016

Lives in: Germany

Following graduation from APU, I interned at the World Food Programme for a year and then became a UN International Volunteer to gain more experience in international development. My current role is with the UN Volunteers headquarters in Bonn, Germany, with responsibilities in raising awareness of and promoting (especially through social media) the work of UN Volunteers across the world. In a way, I am a storyteller because I share inspiring stories of other volunteers in creative ways using multimedia tools and platforms. Working in the UNV means I am part of an extremely multicultural workplace. But this diversity makes me feel right at home as it reminds me of the daily interactions I had at APU with my inspiring international friends and faculty.



APU

YUSEN LOGISTICS

Mukhammadaziz Tojiboev (Uzbekistan)

APM, Graduated in 2017

Lives in: Japan

Enrolling at APU was my first exposure to an international environment. From the first day on campus, I found that adapting to a foreign culture was smooth thanks to APU's supportive, friendly atmosphere. The experience I gained in APU's intercultural communication has been one of my key assets for my career since graduation. I work for a Japanese logistics company, and apart from standard financial tasks, my work demands a constant switch between portfolios of clients from different countries. For people like me who have experienced APU's diverse environment, dealing with people of different cultures is something we are quite used to and do not find it difficult. As a new APU student you can create new connections and try things you have never thought of or experienced before. You will make plenty of interesting friends at APU who will help you become a global citizen.



FEES AND SCHOLARSHIPS

FEES FOR INITIAL YEAR OF STUDY*1

	FIRST YEAR	SECOND YEAR TRANSFER	THIRD YEAR TRANSFER
Program Duration	4 years	3 years	2 years
Admission Fee	200,000 JPY (1,818 USD)	200,000 JPY (1,818 USD)	200,000 JPY (1,818 USD)
Tuition	1,300,000 JPY*2 (11,818 USD)	1,500,000 JPY (13,636 USD)	1,500,000 JPY (13,636 USD)
Comprehensive Renters' Insurance	17,010 JPY (155 USD)	13,010 JPY (118 USD)	8,980 JPY (82 USD)
AP House Entrance Fee	228,000 JPY (April) / 203,500 JPY (September) (2,073 USD (April) / 1,850 USD (September))		
AP House Monthly Rent	49,000 JPY (445 USD)	49,000 JPY (445 USD)	49,000 JPY (445 USD)

*1 All the fees above are subject to change.

US dollar equivalents are for REFERENCE ONLY, based on the rate of 1:110.

*2 Tuition for the second to the fourth year of study is 1,500,000 JPY per year.

Admission Fee

The admission fee is required for all students, regardless of scholarship amount, and is usually due within approximately four weeks after admission result notification. This fee is non-refundable under any circumstance.

Tuition

A payment of your first semester tuition is due in order to complete your enrollment procedures. The remaining tuition will be due at a later time. For APU Tuition Reduction Scholarship recipients, this amount will decrease based on the percentage awarded.

Comprehensive Renters' Insurance

This insurance is required for all students for protection in case of liability, and its fee is required from all students, regardless of the scholarship amount.

AP House Entrance Fee

This fee is required for all students, regardless of the scholarship amount. The fee includes a moving-in fee (32,000 JPY), security deposit (98,000 JPY), and rent (49,000 JPY per month) for two months for April enrollees and for one and half months for September enrollees.

LIVING EXPENSES

Living expenses for a year (including rent listed above) amount to approximately 1,000,000 JPY (approx. 9,100 USD).

SCHOLARSHIPS

APU awards Tuition Reduction Scholarships to outstanding international students. These cover 30%, 50%, 65%, 80%, or 100% of your tuition until graduation. You are eligible to apply if you will hold a student visa while studying at APU. Additional scholarships are available after enrollment. Scholarships at APU are primarily merit-based.



APPLY TO APU



APPLICATION PERIOD

April 2021 enrollment:

June 1, 2020 (Mon) – October 14, 2020 (Wed)

September 2021 enrollment:

September 1, 2020 (Tue) – March 24, 2021 (Wed)

If you reside in Japan, China, India, Indonesia, Korea, Thailand, or Viet Nam, visit the admissions website for additional information.

Transfer applicants have separate application requirements and deadlines.

Please check the admissions website for more details.

https://admissions.apu.ac.jp/how_to_apply/transfer_students/

MINIMUM REQUIREMENTS FOR ADMISSION

Education:

First year applicants: 12 years or equivalent of standard education

Transfer applicants: 13-14 years or equivalent of standard education

Minimum language test score for English-basis applicants:

TEST	FIRST YEAR	TRANSFER
IELTS	6.0*1	6.5*2
TOEFL iBT® Test*3	75	85
TOEIC® L&R Test*3	750	800
Cambridge English Language Assessment	169	176
PTE Academic	50	58
EIKEN	Pre-1	1

*1 You must have a minimum of 5.5 in each section.

*2 You must have a minimum of 6.0 in each section.

*3 TOEIC, TOEFL, TOEFL iBT and TOEFL ITP are registered trademarks of Educational Testing Service (ETS). This publication is not endorsed or approved by ETS.

Minimum language test score for Japanese-basis applicants:

TEST	FIRST YEAR	TRANSFER
JLPT N1	100	110
JLPT N2	120	140
EJU (Japanese)	Listening and Listening-Reading and Reading 250 Writing 30	Listening and Listening-Reading and Reading 280 Writing 35

HOW TO GET STARTED

Create an account in our online application system, complete your online application, upload your documents, pay your application fee, and complete your online assessment. Use the link below to create your account!

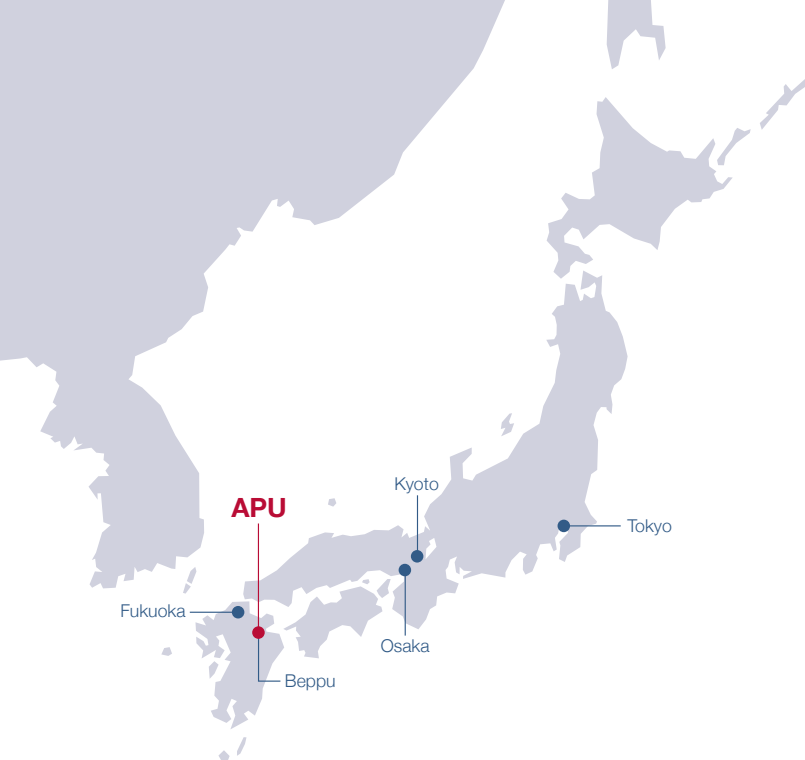
https://admissions.apu.ac.jp/apply_online/



For more information regarding the interview and online assessment process and your estimated final result date, refer to our application handbooks on our download page below.

https://admissions.apu.ac.jp/material_download/





CONTACT US

There are APU offices in the following countries and regions. You are encouraged to make inquiries at your local offices where possible. If you live in a country without an APU office or representative, please contact the APU Admissions Office directly.

APU ADMISSIONS OFFICE

Ritsumeikan Asia Pacific University
1-1 Jumonjibaru, Beppu, Oita 874-8577 Japan
Tel: +81-977-78-1119
<https://admissions.apu.ac.jp/>
Email: welcome@apu.ac.jp
f Ritsumeikan.APU
You Tube APUAdmissionsOffice
s ritsumeikanapu



APU OVERSEAS OFFICES

CHINA

Ritsumeikan Liaison Office,
Shanghai Jiao Tong University
D, 18F Shentong Xinxu Guangchang,
No. 55, Huaihai West Rd.
Shanghai City 200030 China
Tel: +86-21-6283-5104
Fax: +86-21-6283-5247
Email: apuchina@apu.ac.jp

TAIWAN

APU Taiwan Office
C/O MIBC, F10F., NO.209, Sec. 1,
Civic Blvd., Datong Dist., Taipei City 103,
Taiwan
Tel: +886-2-2181-1666
Email: taipei@apu.ac.jp
f APUTW

INDONESIA

APU Indonesia Information Center
C/O MARQUEE, Mayapada Tower I,
11th Floor, Jl.Jend. Sudirman Kav. 28
Jakarta 12920 Indonesia
Tel: +62-21-5289-7328/7392
Email: apu-ina@apu.ac.jp
f apuindonesiaoffice

KOREA

APU Korea Office
#608, Halla Classic Officetel 6th Floor,
23 Gangnam Daero 84 Gil, Gangnam-gu,
Seoul 06233 Korea
Tel: +82-2-564-3425/3426
Fax: +82-2-564-3427
<http://www.ritsapu-kr.com>
Email: hello@ritsapu-kr.com

THAILAND

APU Thailand Office
Room 1015, 10th Floor,
Serm-Mit Tower 159/16 Soi Asoke,
Sukhumvit 21 Road Wattana,
Bangkok 10110 Thailand
Tel/Fax: +66-2-665-7145
Email: thailand@apu.ac.jp
f APUTHailand

VIET NAM

APU Viet Nam Office
238/2B Nguyen Thi Minh Khai St.,
Ward 6, District 3, Ho Chi Minh City,
Viet Nam
Tel: +84-28-39-30-6432
<http://vietnam.apu.ac.jp/>
Email: vietnam@apu.ac.jp
f apuvietnam

APU OVERSEAS REPRESENTATIVES

INDIA

(For applicants residing in Delhi/NCR)
Ms. Deepti Singh
Ritsumeikan APU Delhi Office
18A103 WeWork, Berger Delhi One
Floor 19, Sector 16B,
Noida Uttar Pradesh- 201301, INDIA
Tel: +91-73037-86004
Email: d-india@apu.ac.jp

INDIA

(For applicants residing outside Delhi/NCR)
Ms. Ishana Malkani
Think Education Advisory Services
LLP
1116B, Dalamal Towers, Free Press
Journal Marg, Nariman Point,
Mumbai, India 400021
Tel: +91-22-4005-1675
Email: m-india@apu.ac.jp

SRI LANKA

Dr. Harin Gunawardena
183/1, Nawala Road, Nugegoda,
Sri Lanka
Tel: +94-714251314



TOP GLOBAL
UNIVERSITY
JAPAN



STUDY in JAPAN