

Shape your world



Ritsumeikan  
Asia Pacific University



# MBA

RITSUMEIKAN  
ASIA PACIFIC UNIVERSITY

GRADUATE SCHOOL OF MANAGEMENT 2020



# RANKED IN THE TOP 30 MBA PROGRAMS IN ASIA

by Quacquarelli Symonds (QS)

SELECTED BY THE GOVERNMENT OF JAPAN IN 2014  
AS ONE OF THE COUNTRY'S  
“TOP GLOBAL UNIVERSITIES”

50%

International Faculty



36

Countries and Regions  
Represented by Students



30

Average Age



(Data from the 2018 academic year.)

# TWO-YEAR MASTER'S PROGRAM

The MBA Program at APU prepares you for managerial positions with advanced knowledge in international business and Japanese management techniques.

Conducted entirely in English and in a culturally diverse learning environment, the program opens up various career options globally for our students.

## SPECIALIZATIONS

- Accounting and Finance
- Marketing and Management
- Innovation and Operations Management
- Japanese Management



## HOW MUCH DOES IT COST TO STUDY AT APU?

### Admission fee (one-time deposit)

200,000 JPY (1,739 USD\*)

### Annual tuition

2,000,000 JPY (17,391 USD\*)

### Living costs and other fees

Approx. 1,000,000 JPY (8,696 USD\*) per year  
This includes 49,000 JPY per month for housing, additional fees, and a typical amount spent on living costs such as food, books, transportation, etc.

\*US dollar equivalents are for reference only, based on the exchange rate of \$1 = 115 Japanese yen.  
All fees must be paid in Japanese yen. See our website for a detailed breakdown of fees.

## APU TUITION REDUCTION SCHOLARSHIP

**30%, 50%, 65%, 80%, or 100%**  
Valid for the full two years of study  
All applicants eligible to apply

## EXTERNAL SCHOLARSHIPS

Visit <http://r.apu.jp/external> for details

# LOCATION

APU is located in **Beppu, Japan**, a bayside city home to 120,000 people and over 2,000 natural hot springs.

## Why Beppu is a great place to study:

**Safe and affordable**

**Stunning location**

**Welcoming community**



1



2

1. Beppu Park
2. Natural hot spring steam
3. Ocean view from student housing



3

# APU VOICES

*"The mission of APU's Graduate School of Management (GSM) is to cultivate creative, well-rounded professionals and leaders who will play a central role in resolving management issues at globalizing enterprises and other organizations by imparting advanced management skills, innovation, a good understanding of business ethics, and a deep insight into globalization."*

**Toshitsugu Otake, Ph.D. (Japan)**

**Professor and Dean of the Graduate School of Management**



*"My top three reasons to choose APU's MBA program are the active learning curriculum, the multicultural environment, and the ability to learn foundation Japanese at the same time. With enough determination to make the most of the two-year program, you can graduate from APU with a very strong profile: a global-minded MBA holder who can speak multiple languages."*

**Avila Carlo Irawan (Indonesia, Graduated in 2017)**

**Management Consultant, Skylight Consulting Inc., Japan**



*"Doing my master's in APU has been about more than just attaining an MBA, it has given me a broader platform to grow professionally. By learning in such a multicultural environment, I am open to new ideas, and I am constantly building new frames of reference to solve day to day business problems due to the different perspectives we are exposed to in the classroom."*

**Maduo Latlhang (Botswana)**

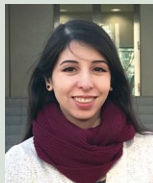
**Master of Business Administration Student**



*"APU is a university that can open new windows of opportunity in your career. I acquired important academic and professional skills that allowed me to understand and conduct business from a global point of view, and thanks to the unique education I received, I was able to continue my studies as a Ph.D. student in Tokyo, Japan after graduation."*

**Vargas Victoria Andrea Garay (Chile, Graduated in 2017)**

**Ph.D. Student, National Graduate Institute for Policy Studies, Japan**



# LEARN FIRST-HAND FROM BUSINESS PROFESSIONALS

APU students gain real-world experience by consulting with business professionals from companies all over Japan. This is through opportunities to visit Japanese companies directly and various events and programs held on campus, such as GCEP, an exchange program which brings corporate talent to APU.

Speakers are also regularly invited from outside APU to facilitate discussions with students on current business trends, enhance network building, and provide information on practical business methods.



# MULTIFACETED SUPPORT FOR STUDENTS

## Beta Gamma Sigma (BGS)

BGS is an international honor society serving business programs accredited by AACSB.

## Field Research Support Subsidy

Students can receive up to 75,000 JPY for travel expenses to conduct field research or present papers at academic conferences.



## GLOBAL CAREER OPPORTUNITIES

### Alumni Pathways

- BANDAI NAMCO Games Inc., Japan
- Bloomberg, Japan
- Ecopetrol S. A., Colombia
- ExxonMobil Corporation, Thailand
- KPMG, Japan
- Michael Page, Japan
- Ministry of Finance, Indonesia
- National Bank of Ethiopia
- Nippon Steel and Sumikin Bussan India Pvt. Ltd., India
- Nissan Motor Co. Ltd., Japan
- NTT Docomo, Inc., Japan
- Procter and Gamble Co., Poland
- Unilever, Indonesia

# HOW TO APPLY

## April 2020 Enrollment

### **MEXT Scholarship applications:**

August 1, 2019 (Thu) - September 24, 2019 (Tue)

### **General applications:**

August 1, 2019 (Thu) - October 23, 2019 (Wed)

## September 2020 Enrollment

### **MEXT Scholarship applications:**

August 1, 2019 (Thu) - November 19, 2019 (Tue)

### **General applications:**

August 1, 2019 (Thu) - March 31, 2020 (Tue)



## ELIGIBILITY REQUIREMENTS

1. Bachelor's degree or equivalent
2. Three years of full-time work experience
3. English language proficiency test score

### **Minimum requirements:**

TOEFL iBT <sup>®</sup> Test	80
TOEIC <sup>®</sup> L&R Test *	780
IELTS	6.0
PTE Academic	50
Cambridge English Language Assessment	FCE Grade B

\* L&R is an abbreviation for LISTENING AND READING

**APPLY ONLINE**  
**<http://r.apu.jp/grad>**

# APU ADMISSIONS OFFICE

Ritsumeikan Asia Pacific University  
1-1 Jumonjibaru, Beppu, Oita 874-8577 Japan

Tel: +81-977-78-1119

<http://r.apu.jp/grad>

Email: [apugrad@apu.ac.jp](mailto:apugrad@apu.ac.jp)

 Ritsumeikan.APU  
 APUAdmissionsOffice  
 ritsumeikanapu



## APU OVERSEAS OFFICES

### CHINA

Ritsumeikan Liaison Office

Tel: +86-21-6283-5104

Email: [apuchina@apu.ac.jp](mailto:apuchina@apu.ac.jp)

### KOREA

APU Korea Office

Tel: +82-2-564-3425/3426

<http://www.ritsapu-kr.com>

Email: [hello@ritsapu-kr.com](mailto:hello@ritsapu-kr.com)

### TAIWAN

APU Taiwan Office

Tel: +886-2-2181-1666

Email: [taipei@apu.ac.jp](mailto:taipei@apu.ac.jp)

 APUTW

### INDONESIA

APU Indonesia Information Center

Tel: +62-21-5289-7328/7392

Email: [apu-ina@apu.ac.jp](mailto:apu-ina@apu.ac.jp)

 [apuindonesiaoffice](https://www.facebook.com/apuindonesiaoffice)

### THAILAND

APU Thailand Office

Tel: +66-2-665-7145

Email: [thailand@apu.ac.jp](mailto:thailand@apu.ac.jp)

 APUThailand

### VIET NAM

APU Viet Nam Office

Hanoi Tel: +84-24-32-000-619

Ho Chi Minh City

Tel: +84-28-39-30-6432

<http://vietnam.apu.ac.jp>

Email: [vietnam@apu.ac.jp](mailto:vietnam@apu.ac.jp)

 [apuvietnam](https://www.facebook.com/apuvietnam)

## APU OVERSEAS REPRESENTATIVES

### INDIA

Mr. Vishnu Vankayala

Tel: +91-44-4352-2078

Email: [s-india@apu.ac.jp](mailto:s-india@apu.ac.jp)

### SRI LANKA

Dr. Harin Gunawardena

Tel: +94-714251314

